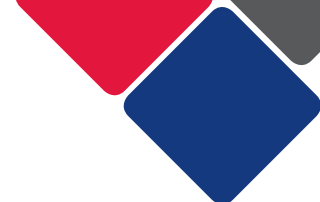


Far West District Data Profile

Murrumbidgee, Far West and
Western NSW

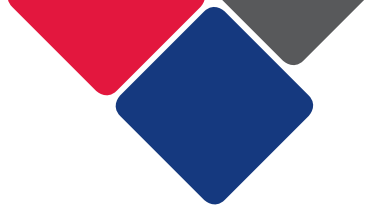




Contents

Introduction	4
Demographic Data	7
Population - Far West	7
Aboriginal and Torres Strait Islander population	9
Country of birth	11
Languages spoken at home	12
Migration streams	13
Children and Young People	14
Government schools	14
Early childhood development	18
Vulnerable children and young people	22
Contact with child protection services	25
Economic Environment	26
Education	26
Employment	28
Income	29
Socio-economic advantage and disadvantage	31
Social Environment	32
Community safety and crime	32





Maternal Health	35
Teenage pregnancy	35
Smoking during pregnancy	36
Australian Mothers Index	37
Disability	38
Need for assistance with core activities	38
Housing	39
Households	39
Tenure types	40
Housing affordability	41
Social housing	42





Introduction

This document presents a brief data profile for the Far West district. It contains a series of tables and graphs that show the characteristics of persons, families, and communities. It includes demographic, housing, child development, community safety and child protection information.

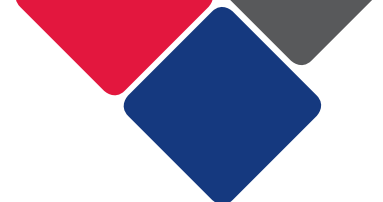
Where possible, we present this information at the local government area (LGA) level.

In the Far West district there are four LGAs:

- Balranald
- Broken Hill
- Central Darling
- Wentworth

The data presented in this document is from a number of different sources, including:

- Australian Bureau of Statistics (ABS)
- Bureau of Crime Statistics and Research (BOCSAR)
- NSW Health Stats
- Australian Early Developmental Census (AEDC)
- NSW Government administrative data.



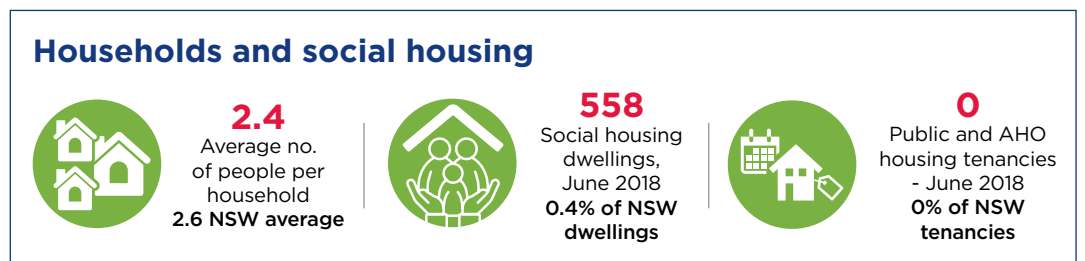
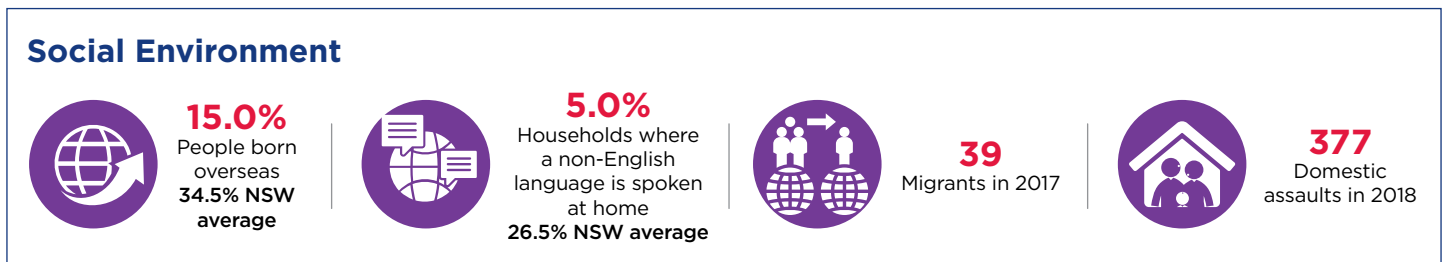
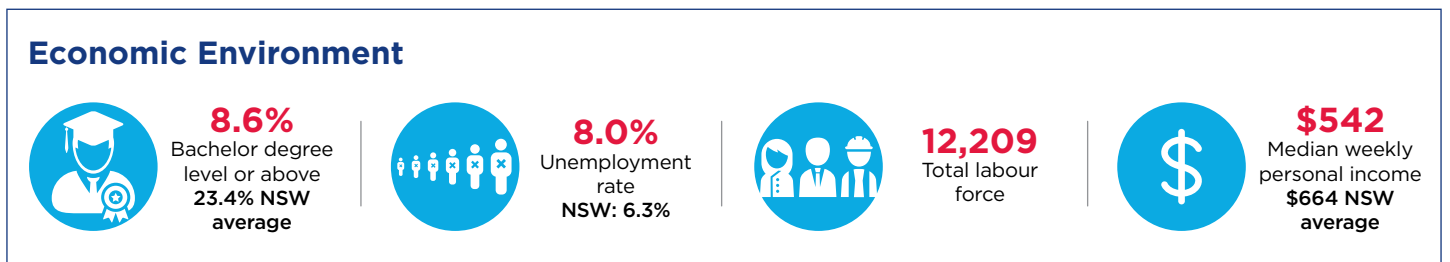
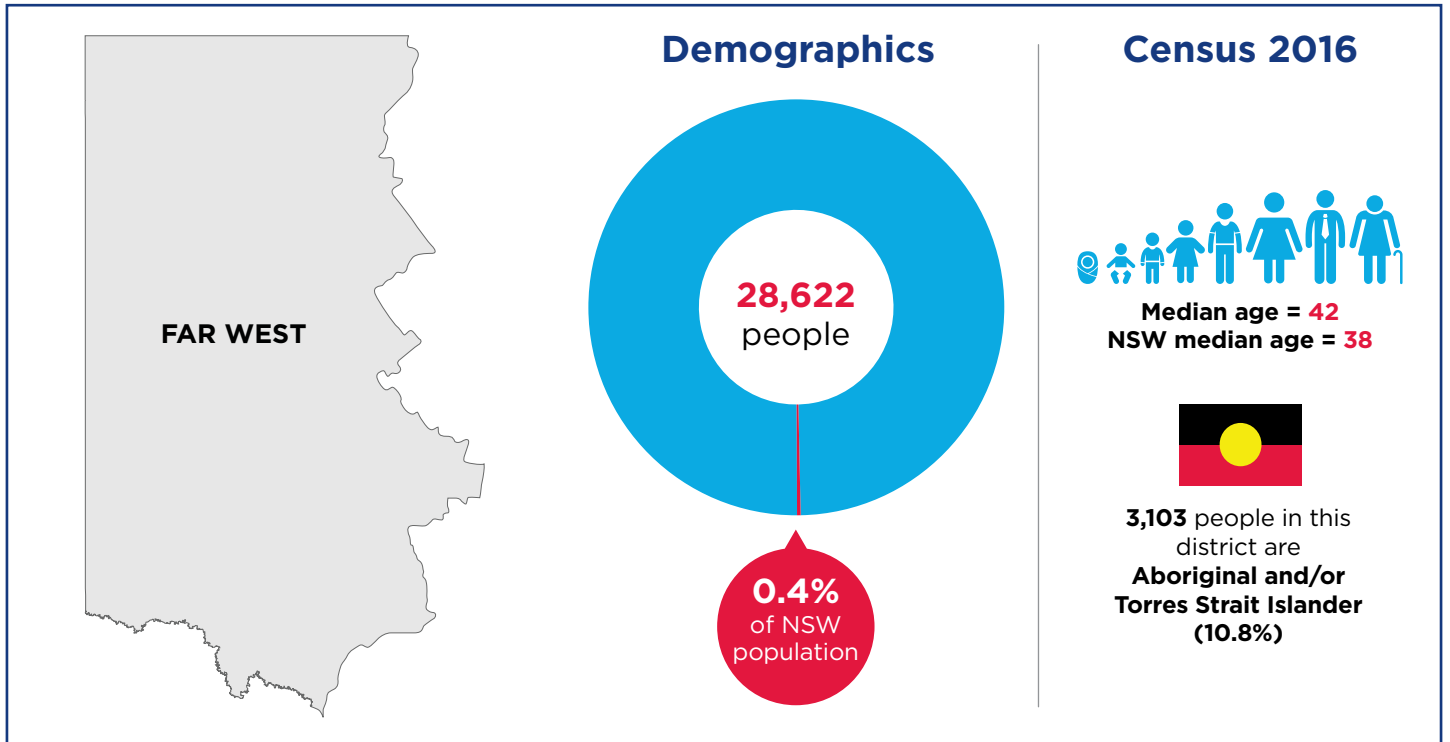
The majority of these sources are publicly available. We have provided source statements for each table and graph. This tells you where the data comes from and where you can find more information.

Please note, the information in the original sources may change as authors (e.g. ABS, NSW Healthstats) update the data. As such, we have also recorded the date we accessed the information.

If you would like additional suburb-level and Aboriginal and Torres Strait Islander specific data, the following sources are available to you:

- The ABS provides demographic, cultural and linguistic diversity, employment and housing data at a suburb level through Quick Stats: <https://www.abs.gov.au/websitedbs/D3310114.nsf/Home/2016%20QuickStats>. For example, for the Broken Hill suburb, select 'Broken Hill, NSW: State Suburb (SSC)' from the drop down menu.
- The ABS also ranks suburbs on the Socio-Economic Indexes for Areas (SEIFA): http://stat.data.abs.gov.au/Index.aspx?DataSetCode=SEIFA_SSC. For more information on the SEIFA, see page 24.
- BOSCAR records criminal offences at a suburb level: https://www.bocsar.nsw.gov.au/Pages/bocsar_datasets/Datasets.aspx. Follow the 'Suburb' link in the Geographic breakdown category for a spreadsheet containing all suburb-level crime data.
- Information about Aboriginal and Torres Strait Islander persons, families and dwellings, including comparisons with non-Indigenous people, is also available at LGA level through the ABS 2016 Census Community Profiles: <https://www.abs.gov.au/websitedbs/D3310114.nsf/Home/2016%20Census%20Community%20Profiles>. For example, for information about the Aboriginal and Torres Strait Islander population of Broken Hill, select 'Broken Hill (C) NSW: Local Government Area (LGA)' from the drop down menu, and follow the link for the 'Aboriginal and Torres Strait Islander Peoples Profile'.

Far West District

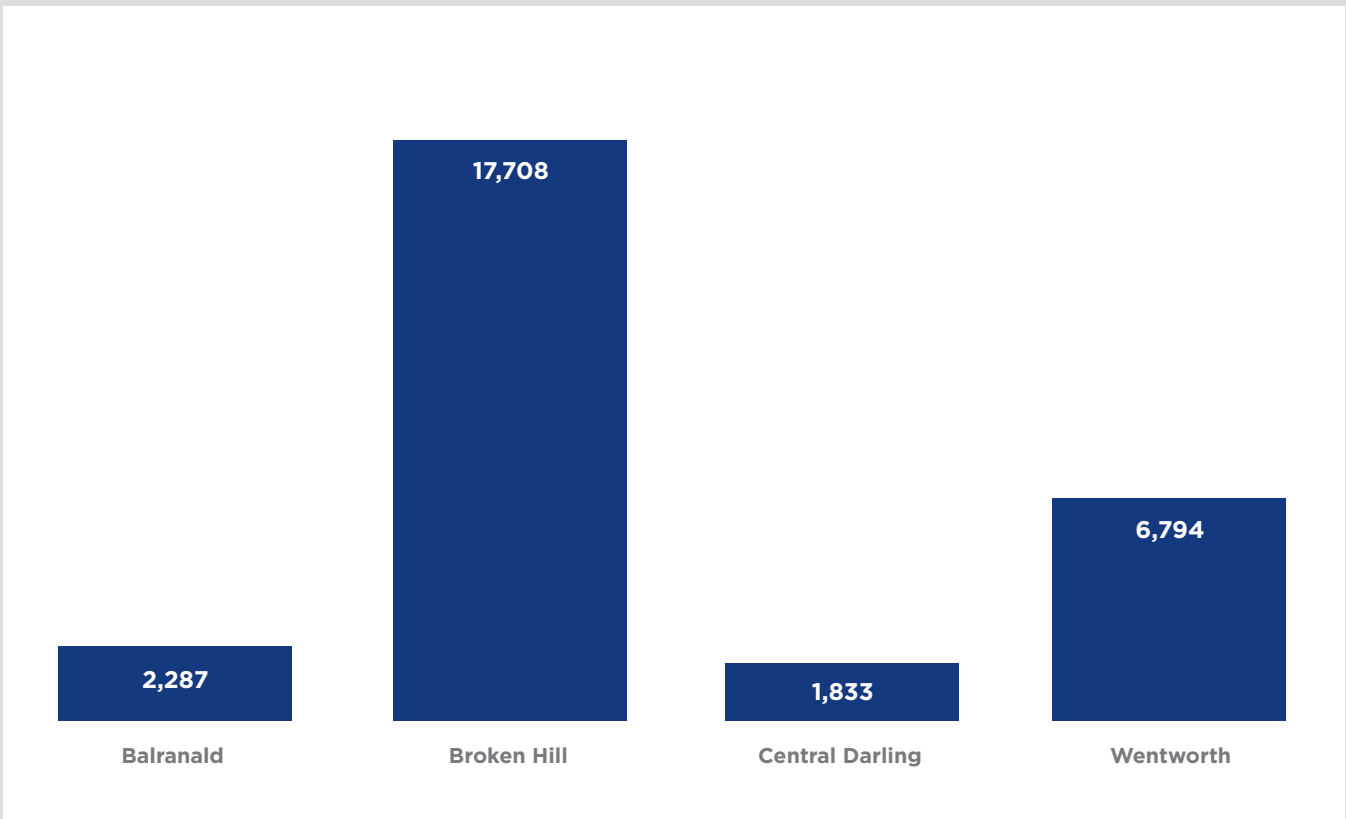


Demographic Data

Population – Far West

The population in the Far West district was estimated at 28,622 in the 2016 Census (see Figure 1). This district is made up of four local government areas (LGAs). The largest LGA is Broken Hill with an estimated population of 17,708. The smallest LGA is Central Darling with an estimated population of 1,833.

Figure 1. Population of the Far West district, by LGA



Source: ABS Quickstats, 2016 Census: <https://www.abs.gov.au/websitedbs/D3310114.nsf/Home/2016%20QuickStats> (accessed 14 October 2019)

The median age in New South Wales is 38 years of age. In the Far West district, the LGA of Central Darling is close to the state average, with a median age of 39. The other three LGAs all have older median ages, the highest being Broken Hill with a median age of 45.

Table 1 shows a breakdown of age for each LGA in the Far West district.

Table 1. Age breakdown of the population by LGA in Far West

Age Group (years)	Balranald		Broken Hill		Central Darling		Wentworth		Far West	
	No.	%	No.	%	No.	%	No.	%	No.	%
0-4	143	6.2	974	5.5	136	7.4	423	6.2	1,676	5.8
5-9	186	8.1	1,014	5.7	121	6.5	449	6.6	1,770	6.2
10-14	153	6.7	950	5.4	94	5.1	408	6.0	1,605	5.6
15-19	135	5.9	949	5.4	123	6.7	397	5.8	1,604	5.6
20-24	132	5.8	962	5.4	108	5.8	324	4.8	1,526	5.3
25-29	121	5.3	1,116	6.3	119	6.4	316	4.6	1,672	5.8
30-34	112	4.9	1,002	5.7	135	7.3	365	5.4	1,614	5.6
35-39	129	5.6	872	4.9	101	5.5	321	4.7	1,423	5.0
40-44	143	6.2	989	5.6	104	5.6	425	6.3	1,661	5.8
45-49	128	5.6	1,115	6.3	121	6.5	457	6.7	1,821	6.4
50-54	157	6.9	1,241	7.0	126	6.8	496	7.3	2,020	7.0
55-59	190	8.3	1,404	7.9	135	7.3	539	7.9	2,268	7.9
59-64	194	8.5	1,261	7.1	134	7.2	502	7.4	2,091	7.3
65+	368	16.1	3,865	21.8	292	15.8	1,378	20.3	5,903	20.6
Total	2,291	100	17,714	100	1,849	100	6,800	100	28,654	100
Total in NSW									7,480,228	0.4

Source: ABS Quickstats, 2016 Census: <https://www.abs.gov.au/websitedbs/D3310114.nsf/Home/2016%20QuickStats> (accessed 14 October 2019)



Aboriginal and Torres Strait Islander population

In the Far West district, 10.8% (n=3,103) of the population identify as Aboriginal and/or Torres Strait Islander (see Table 2). The majority of these people are children and young people; 49.6% of the Aboriginal and Torres Strait Islander population in the Far West district are under 25 years. This is higher than the NSW state average, where only 28.6% of the Aboriginal and/or Torres Strait Islander population are under 25 years old.

Table 2. Population of Aboriginal and Torres Strait Islander in Far West, by Age

Age Group (years)	Balranald		Broken Hill		Central Darling		Wentworth		Far West	
	No.	%	No.	%	No.	%	No.	%	No.	%
0-4	16	7.8	182	12.1	66	8.9	76	11.6	340	11.0
5-9	36	17.5	193	12.8	61	8.3	58	8.9	348	11.2
10-14	28	13.6	161	10.7	50	6.8	58	8.9	297	9.6
15-19	20	9.7	145	9.6	80	10.8	50	7.6	295	9.5
20-24	11	5.3	133	8.8	63	8.5	49	7.5	256	8.3
25-29	9	4.4	128	8.5	60	8.1	61	9.3	258	8.3
30-34	10	4.9	99	6.6	63	8.5	49	7.5	221	7.1
35-39	13	6.3	73	4.9	42	5.7	27	4.1	155	5.0
40-44	15	7.3	87	5.8	55	7.4	42	6.4	199	6.4
45-49	10	4.9	84	5.6	47	6.4	47	7.2	188	6.1
50-54	12	5.8	62	4.1	52	7.0	50	7.6	176	5.7
55-59	6	2.9	54	3.6	29	3.9	28	4.3	117	3.8
60-64	10	4.9	36	2.4	26	3.5	14	2.1	86	2.8
65 and above	10	4.9	67	4.5	45	6.1	45	6.9	167	5.4
Total	206	100	1,504	100	739	100	654	100	3,103	100
% of LGA population	9.0		8.5		40.3		9.6		% of district pop.	10.8

Source: ABS Community Profiles, Aboriginal and Torres Strait Islander Peoples Profile, 2016 Census: <https://www.abs.gov.au/websitedbs/D3310114.nsf/Home/2016%20Census%20Community%20Profiles> (accessed 14 October 2019)

Country of birth

In the Far West district, 85.1% of residents were born in Australia (see Table 3). This is much higher than the New South Wales state average of 65.5%. The most common birthplaces, other than Australia, were England, New Zealand, and Philippines.

Table 3. Country of Birth in Far West, by LGA

Balranald			Broken Hill		
Country	No.	%	Country	No.	%
Australia	1,869	81.7	Australia	15,364	87.0
Other top responses					
Italy	22	1.0	England	154	0.9
England	18	0.8	Philippines	124	0.7
Fiji	14	0.6	New Zealand	72	0.4
New Zealand	13	0.6	India	50	0.3
Malaysia	12	0.5	Germany	33	0.2
Central Darling			Wentworth		
Country	No.	%	Country	No.	%
Australia	1,457	80.2	Australia	5,650	83.2
Other top responses					
England	14	0.8	England	95	1.4
New Zealand	9	0.5	New Zealand	65	1.0
Germany	5	0.3	Italy	46	0.7
Fiji	3	0.2	Scotland	15	0.2
Samoa	3	0.2	Germany	14	0.2

Source: ABS Quickstats, 2016 Census: <https://www.abs.gov.au/websitedbs/D3310114.nsf/Home/2016%20QuickStats> (accessed 25 September 2019)

Languages spoken at home

In the Far West district, 87.1% of residents spoke only English at home (see Table 4). This is much higher than the New South Wales state average of 68.5%.

The proportion of households where a non-English language was spoken at home was highest in Balranald, at 8.9%. It was lowest in Broken Hill, at 3.8%.

Table 4. Languages spoken at home in Far West, by LGA

Balranald			Broken Hill		
	No.	%	Country	No.	%
English only spoken at home	1,902	83.2	English only spoken at home	15,703	88.7
Households where a non-English language is spoken	85	8.9	Households where a non-English language is spoken	291	3.8
Top responses other than English					
Italian	69	3.0	Italian	45	0.3
Fijian	13	0.6	Filipino	37	0.2
Mandarin	11	0.5	Tagalog	34	0.2
Arabic	8	0.4	Maltese	19	0.1
Tongan	8	0.4	Malayalam	19	0.1
Central Darling			Wentworth		
	No.	%	Country	No.	%
English only spoken at home	1,479	81.1	English only spoken at home	5,843	86.3
Households where a non-English language is spoken	35	4.7	Households where a non-English language is spoken	139	5.0
Top responses other than English					
Tongan	11	0.6	Italian	79	1.2
German	7	0.4	Aboriginal English, so described	10	0.1
Arabic	5	0.3	Dutch	7	0.1
Kuuku-Ya'u	5	0.3	Turkish	6	0.1
Malayalam	4	0.2	Croatian	5	0.1

Source: ABS Quickstats, 2016 Census: <https://www.abs.gov.au/websitedbs/D3310114.nsf/Home/2016%20QuickStats> (accessed 25 September 2019)

Migration streams

Only 0.1% of migrants arriving in NSW between 1 January and 31 December 2017 settled in the Far West district (see Table 5). The largest number of migrants to the Far West district settled in Broken Hill. Most of these were skilled migrants (n=20) followed by family migrants (n=8).

No humanitarian migrants were settled in the Far West district in 2017.

Table 5. Migration Stream in Far West, by LGA, between 1 January and 31 December 2017

LGA	Migration Stream			Total
	Family	Humanitarian	Skilled	
Balranald	5	0	0	5
Broken Hill	8	0	20	28
Central Darling	0	0	0	0
Wentworth	6	0	0	6
Far West	19	0	20	39
Total NSW	27,200	6,514	47,002	80,794

Source: Department of Social Services, Settlement Data Reports January 2017 to 31 December 2017: <https://www.data.gov.au/dataset/ds-dga-8d1b90a9-a4d7-4b10-ad6a-8273722c8628/details> (accessed 14 October 2019).

Children and Young People

Government schools

The following tables provide information about the government schools in the four LGAs that make up the Far West district. These tables provide information on the following factors:

No. of FTE enrolments	The number of full-time equivalent (FTE) enrolments indicates the number of students who attended the school over the course of the academic year. For example, 39.2 means 39 students were enrolled full time for one academic year and one student was enrolled for a fifth of the year.
% of ATSI	The percentage of FTE students enrolled who identify as Aboriginal and/or Torres Strait Islander.
% of LBOTE	The percentage of students (headcount) who have a language background other than English (LBOTE). A student has a LBOTE if they, or their parents or guardians, speak a language other than English at home.
ISCEA value	<p>The Index of Community Socio-Education Advantage (ICSEA) provides information about the socio-educational backgrounds of a school's students. This is worked out by looking at the parents' occupation and education, a school's geographical location, and the proportion of Indigenous students.</p> <p>The ICSEA is set at an average of 1000. The lower the ICSEA level, the lower the educational advantage of students who go to this school. The highest score of a public school in New South Wales is 1245, and the lowest score is 543.</p>
% School attendance	The attendance rate is the number of actual FTE student days attended by full-time students in Years 1-10 in Semester One as a percentage of the total number of possible student-days attended in semester one.

There are 22 government schools in the Far Western NSW district (see Table 6a-6d):

- 2 in the Balranald LGA
- 8 in the Broken Hill LGA
- 4 in the Central Darling LGA
- 8 in the Wentworth LGA

The largest is Willyama High School in Broken Hill (475.8 FTE enrolments), and the smallest is the White Cliffs Public School in Central Darling LGA (10 FTE enrolments).

The government school with the highest proportion of Aboriginal and Torres Strait Islander students is Dareton Public School in Wentworth (98%), followed by Wilcannia Central School (94%). These schools also have the lowest ISCEA values, with Dareton Public School at 580 and the Wilcannia Central School at 660. The school with the highest ISCEA value is Gol Gol public school in Wentworth (1003).

Table 6a. Profile of government schools in the Balranald LGA

Government school	No. of FTE enrolments	% of ATSI	% of LBOTE	ISCEA value	% School attendance
Balranald Central School	146.8	27	5	875	89.8
Euston Public School	79	9	29	939	93.6

Table 6b. Profile of government schools in the Broken Hill LGA

Government school	No. of FTE enrolments	% of ATSI	% of LBOTE	ISCEA value	% School attendance
Alma Public School	266	33	3	841	91.7
Broken Hill High School	614	17	7	924	84.8
Broken Hill North Public School	252	35	3	852	89.8
Broken Hill Public School	164	23	6	909	91.8
Burke Ward Public School	287	21	3	919	90.8
Morgan Street Public School	329	13	4	960	91.9
Railway Town Public School	126	25	8	873	89.9
Willyama High School	475.8	18	2	923	88

Table 6c. Profile of government schools in the Central Darling LGA

Government school	No. of FTE enrolments	% of ATSI	% of LBOTE	ISCEA value	% School attendance
Ivanhoe Central School	37	51	np	844	87.4
Menindee Central School	79.2	76	np	715	91.5
White Cliffs Public School	10	0	0	989	97.4
Wilcannia Central School	65.6	94	92	660	62.7

Table 6d. Profile of government schools in the Wentworth LGA

Government school	No. of FTE enrolments	% of ATSI	% of LBOTE	ISCEA value	% School attendance
Buronga Public School	118	37	0	848	91.7
Coomealla High School	244.6	34	5	867	83.1
Dareton Public School	53	98	np	580	81.4
Gol Gol Public School	202	np	np	1005	94.1
Palinyewah Public School	12	0	0	1003	94
Pomona Public School	26	np	0	900	97
Wentworth Public School	117	44	9	838	90.5
Willyama High School	475.8	18	2	923	88

Source: NSW Centre for Education Statistics and Evaluation, Master dataset: NSW government school locations and student enrolment numbers (2017) <https://data.cese.nsw.gov.au/data/dataset/nsw-public-schools-master-dataset> (accessed 7 October 2019), Student attendance rate by individual government schools (2011-2017): <https://data.cese.nsw.gov.au/data/dataset/student-attendance-rate-by-school> (accessed 7 October 2019).

The Department of Education also provides information about suspensions and expulsions from government schools at the district level¹.

Table 7 shows the Far West NSW district has a higher proportion of students who received short suspensions (four days or less) in 2018 compared to the NSW state average. In 2018, 7.2% of students received short suspensions in Far West, compared to 4.0% in NSW.

The proportion of students who received long suspensions (4-20 school days) was also highest than the NSW state average; 2.8% in the district compared to 1.5% in the state.

In the Far West NSW district, less than five students were expelled for misbehaviour in 2018 and less than five students were expelled for unsatisfactory participation.

Table 7. Suspensions and expulsions from government schools in Far West NSW district, 2018

	Far West	New South Wales
Total short suspensions ¹	472	52,755
Total number of students short suspended	280	32,343
Students short suspended as % of enrolment	7.2%	4.0%
Total long suspensions	150	17,235
Total number students long suspended ²	107	12,355
Students long suspended as % of enrolment	2.8%	1.5%
Students expelled for misbehaviour	<5 ³	175
Expulsion for unsatisfactory participation	<5 ³	122

Source: NSW Centre for Education Statistics and Evaluation, Suspensions and Expulsions in NSW government schools (2015-2018): <https://data.cese.nsw.gov.au/data/dataset/suspensions-and-expulsions-in-nsw-government-schools> (accessed 9 October 2019)

- ¹ includes students on short suspension (four days or less) on more than one occasion
² includes students on long suspension (four to 20 school days) on more than one occasion
³ In order to protect individual students' identities, values 5 and under are represented as <5

¹ To our knowledge, LGA data is unavailable.

Early childhood development

The Australian Early Development Census (AEDC) measures the early childhood development of children in Australia in their first year of full-time school. It measures this across five domains that predict later health, education and social outcomes:

- physical health and wellbeing
- social competence
- emotional maturity
- language and cognitive skills (school-based)
- communication skills and general knowledge

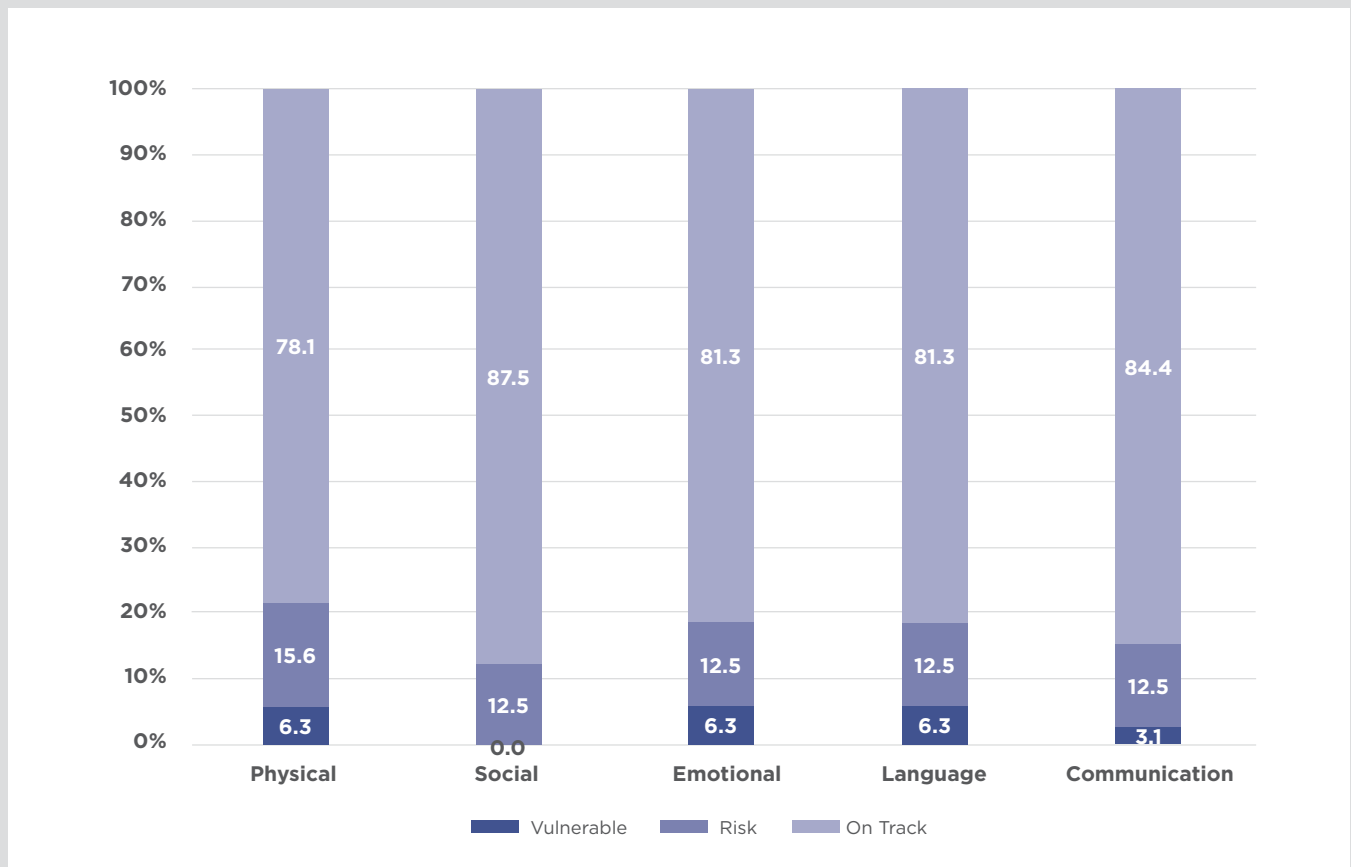
MORE INFORMATION

More information about the AEDC domains can be found in the [About the AEDC Domains](#) fact sheet.

The AEDC results can tell us if children are developmentally on track or if they need more support through their school years.

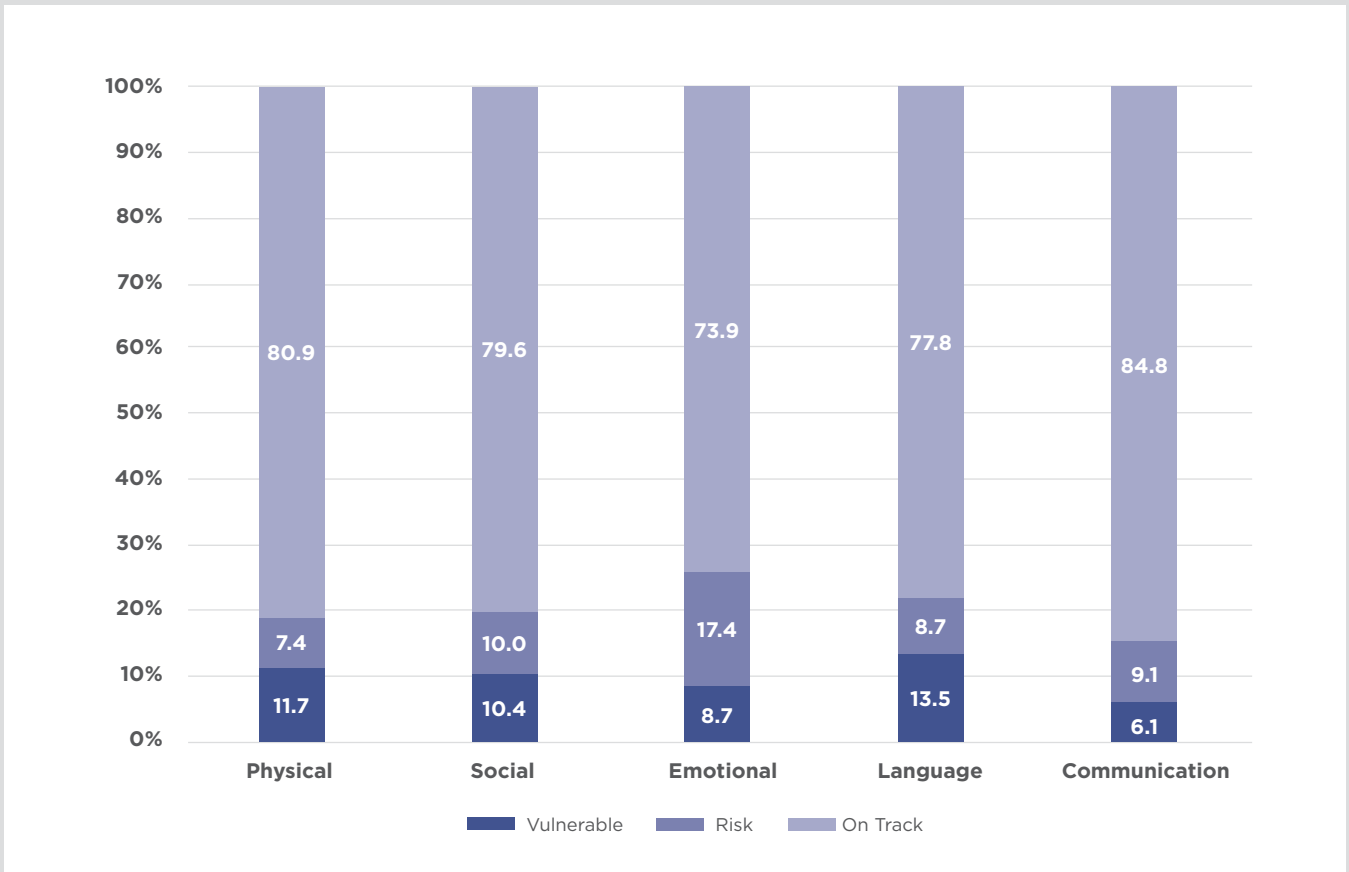
In the 2018 AEDC, the majority of children in the Far West district were developmentally on track (see Figures 2-5). In all four LGAs, over 59% of children were developmentally on track for each of the five AEDC domains. The proportion of children developmentally 'at risk' and 'vulnerable' was greater in Central Darling and Wentworth than in Broken Hill and Balranald.

Figure 2. 2018 AEDC results for Balranald LGA



Source: AEDC Data Explorer: <https://www.aedc.gov.au/data/data-explorer?id=135106> (accessed 14 October 2019)

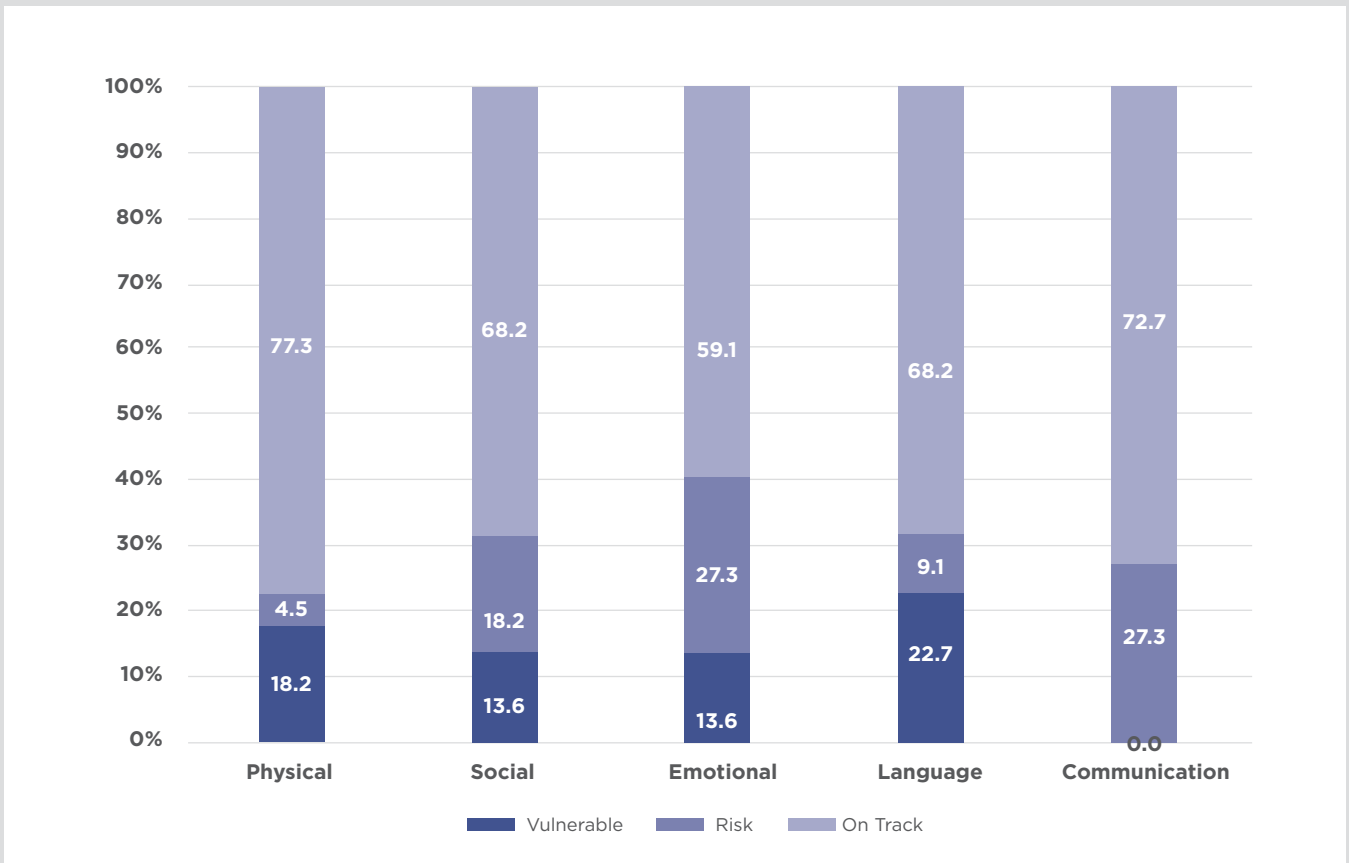
Figure 3. 2018 AEDC results for Broken Hill LGA¹



Source: AEDC Data Explorer: <https://www.aedc.gov.au/data/data-explorer?id=136128> (accessed 14 October 2019)

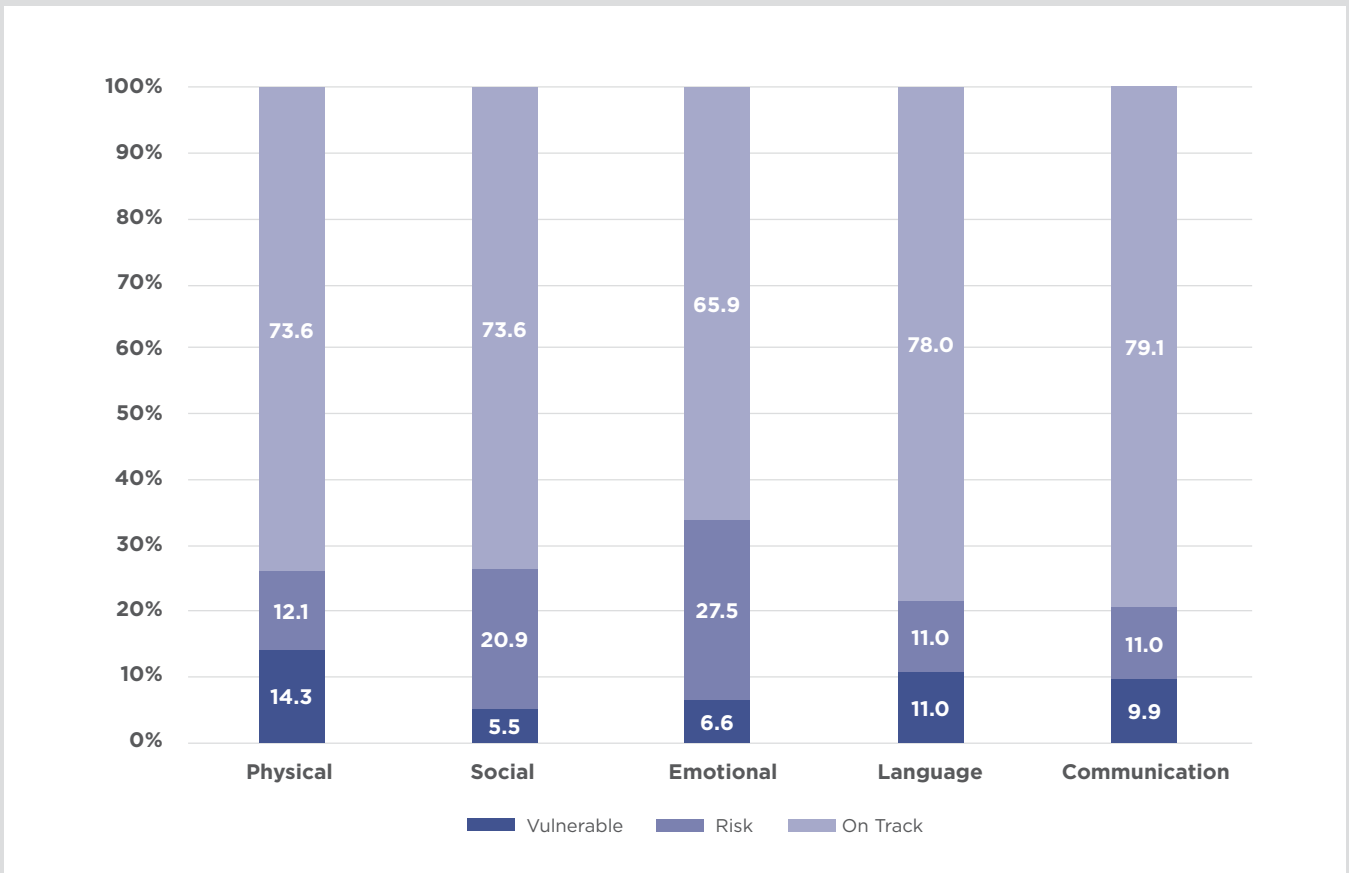
¹ In the AEDC data explorer, Broken Hill is named 'Far West NSW'

Figure 4. 2018 AEDC results for Central Darling LGA



Source: AEDC Data Explorer: <https://www.aedc.gov.au/data/data-explorer?id=135131> (accessed 14 October 2019)

Figure 5. 2018 AEDC results for Wentworth LGA



Source: AEDC Data Explorer: <https://www.aedc.gov.au/data/data-explorer?id=135245> (accessed 14 October 2019)

The AEDC also has two summary indicators that measure developmental vulnerability across all five domains.

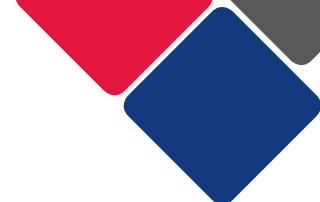
In 2018, 11.9% of children were developmentally vulnerable on two or more domains in the Far West district (see Table 8). Wentworth had the highest proportion of children developmentally vulnerable on two or more domains, at 14.3% and Balranald had the lowest proportion at 3.1%.

Table 8. Percentage of children developmentally vulnerable in Far West District, by LGA, 2018

	Developmentally vulnerable on 1 or more domain		Developmentally vulnerable on two or more domains		Total no. of children measured
	No.	%	No.	%	
Balranald	6	18.8	1	3.1	34
Broken Hill ¹	53	23.0	30	13.0	238
Central Darling	10	45.5	3	13.6	28
Wentworth	25	27.5	13	14.3	96
Far West	94	23.7	47	11.9	396
NSW	18,583	19.9	9,001	9.6	97,731

Source: AEDC Data Explorer: <https://www.aedc.gov.au/data/data-explorer?id=135245> (accessed 14 October 2019)

¹ In the AEDC data explorer, Broken Hill is named 'Far West NSW'



Vulnerable children and young people

Using the Their Futures Matter (TFM) Human Services Dataset, TFM identified three vulnerable groups of children and young people in NSW:

<p>Young children aged 0-5</p>	<p>Children aged 5 or younger at 30 June 2017 with one or more of the following:</p> <ul style="list-style-type: none"> • 1 or more parental risk factors • 2 or more perinatal risk factors • Assessment as at ROSH
<p>Children aged under 15 and affected by mental illness</p>	<p>Children under 15 years at 30 June 2017 with one or more the following:</p> <ul style="list-style-type: none"> • Use of NSW mental health services (hospital or ambulatory) • Parental use of NSW mental health services (hospital or ambulatory)
<p>Children and young people aged 15-18 and affected by mental illness</p>	<p>Children and young people between 15-18 years at 30 June 2017 with one or more of the following:</p> <ul style="list-style-type: none"> • Use of NSW mental health services (hospital or ambulatory) • Parental use of NSW mental health services (hospital or ambulatory)

For each vulnerable group, TFM identified five indicators associated with poor outcomes later in life. They also identified the proportion of this group with this indicator. TFM identified these indicators by undertaking predictive modelling and analysis, using the TFM Human Services Data set. This dataset brings together data collected by ten different government agencies. It includes data on child protection, housing, justice, health, education and commonwealth service use.

Table 9 shows the top five indicators for each vulnerable group in the Far West district.

Table 9. Indicators of vulnerable children and young people in the Far West district

Vulnerable group	Indicator	% of group with indicator
Young children aged 0-5	Parents have interacted with justice system	44
	Mother smoked during pregnancy	54
	Child had concern report	39
	Mother aged 21 and under at childbirth	24
	Parents have been in social housing	3
Children aged under 15 and affected by mental illness	Child had a concern report	50
	Mother smoked during pregnancy	53
	Parents have interacted with justice system	42
	Mother aged 21 and under at childbirth	30
	Parents have been in social housing	6
Children and young people aged 15-18 and affected by mental illness	NAPLAN Year 7 band less than 6	73
	Had concern report in the last three years	39
	Hospital admission in the last three years	21
	Family have been in social housing	15
	Has appeared in court	7

Source: Their Futures Matter, FACS District Data pack, Far West district

Table 10 shows the number and proportion of children in each of the vulnerable groups by LGA. It also shows us what proportion of this group identifies as Aboriginal.

For example, in Broken Hill, 1,106 children were under the age of 5. Of these children, 50% (n=554) were identified as vulnerable and 33% of these vulnerable children identified as Aboriginal. By comparison, in Central Darling, 70% of children under the age of 5 were vulnerable and 81% of these vulnerable children identified as Aboriginal.

When looking at children under the age of 15, 39% were affected by mental illness in Broken Hill, compared to 46% in Central Darling.

When looking at children and young people between the ages of 15 and 18, 54% were affected by mental illness in Wentworth, compared to 43% in Broken Hill.

Table 10. Vulnerable groups of children and young people in the Far West district, by LGA

		Balranald	Broken Hill	Central Darling	Went-worth
Young children aged 0-5	No. of C/YP aged under 5	8	1,106	83	12
	No. of vulnerable C/YP aged under 5	NA ¹	554	58	NA
	% of vulnerable C/YP aged under 5	NA	50%	70%	NA
	% who identify as Aboriginal	NA	33%	81%	NA
Children aged under 15 and affected by mental illness	No. of C/YP aged under 15	31	2,335	219	124
	No. of C/YP aged under 15 affected by mental illness	NA	909	101	NA
	% of C/YP aged under 15 affected by mental illness	NA	39%	46%	NA
	% of identify as Aboriginal	NA	40%	82%	NA
Children and young people aged 15-18 and affected by mental illness	No. of C/YP aged 15-18	15	714	53	56
	No. of C/YP aged 15-18 affected by mental illness	NA	306	NA	30
	% of C/YP aged 15-18 affected by mental illness	NA	43%	NA	54%
	% of identify as Aboriginal	NA	42%	NA	80%

Source: Their Futures Matter, FACS District Data pack, Far West district

¹ Some cells have been set to NA to minimize the risk of re-identification. These cells either have a count of less than 5 people or have the lowest number of people in the District in the remaining LGAs.

Contact with child protection services

In 2016-17, 1.7% (n=111) of children and young people aged 18 and under were in out-of-home care (OOHC) in the Far West district. The majority of these children and young people were in Broken Hill (n=53) and Wentworth (n=40).

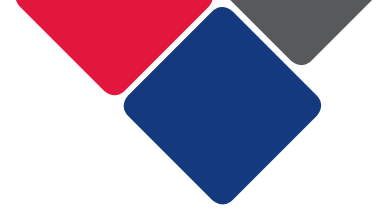
In 2016-17, 12.5% (n=798) of children and young people aged 18 and under were found to be at risk of significant harm (ROSH). The majority of these children were in Broken Hill (n=516).

Balranald had the smallest amount of children reported at ROSH or in OOHC.

Table 11. Child Protection Overview in the Far West District, by LGA, 2016-17

	Total number of children and young people reported		Total number of children and young people at risk of significant harm		Total number of children and young people in out-of-home care as of 30 June 2017		Total number of CYP 18 and under
	No.	%	No.	%	No.	%	No.
Balranald	38	6.4	32	5.4	9	1.5	598
Broken Hill	656	17.4	516	13.7	53	1.4	3,761
Central Darling	104	24.1	85	19.7	9	2.1	431
Wentworth	231	14.4	165	10.3	40	2.5	1,603
Far West	1,029	16.1	798	12.5	111	1.7	6,393
NSW	230,343	13.2	168,819	9.7	36,304	2.1	1,742,488

Source: FACS Datacube, accessed 14 October 2019



Economic Environment

Education

In the Far West district, 17.6% of people aged 15 and over reported completing Year 10 as their highest level of educational attainment (See Table 12). This was followed by 16.5% of people aged 15 and over who only had Year 9 or below as their highest level of educational attainment and 18.9% of people had a Certificate III or IV as their highest level of educational attainment.

Table 12. Level of highest educational attainment in Far West, by LGA (people aged 15 years and over)

Highest level of educational attainment	Balranald		Broken Hill		Central Darling		Wentworth		Far West		NSW
	No.	%	No.	%	No.	%	No.	%	No.	%	No.
Bachelor Degree level and above	127	7.1	1,263	8.6	77	5.1	507	9.2	1,974	8.6	23.4
Advanced Diploma and Diploma level	80	4.4	804	5.5	71	4.7	366	6.6	1,321	5.7	8.9
Certificate level IV	33	1.8	516	3.5	30	2.0	152	2.7	731	3.2	2.8
Certificate level III	223	12.4	2,359	16.0	134	8.9	889	16.1	3,605	15.7	12.0
Year 12	243	13.5	1,238	8.4	133	8.9	538	9.7	2,152	9.3	15.3
Year 11	134	7.4	653	4.4	72	4.8	433	7.8	1,292	5.6	3.3
Year 10	286	15.9	2,770	18.8	260	17.3	744	13.4	4,060	17.6	11.5
Certificate level II	3	0.2	30	0.2	3	0.2	4	0.1	40	0.2	0.1
Certificate level I	0	0.0	3	0.0	0	0.0	0	0.0	3	0.0	0.0
Year 9 or below	312	17.3	2,449	16.6	255	17.0	791	14.3	3,807	16.5	8.4
No education attainment	15	0.8	32	0.2	8	0.5	23	0.4	78	0.3	0.9
Not stated	316	17.6	2,279	15.5	420	28.0	959	17.3	3,974	17.3	10.3

Source: ABS Quickstats, 2016 Census: <https://www.abs.gov.au/websitedbs/D3310114.nsf/Home/2016%20QuickStats> (accessed 14 October 2019)

Employment

There were 12,209 of people who reported being in the labour force in the week before Census night in the Far West district (see Table 13). Of these, 57.0% were employed full time, 28.4% were employed part-time and 8.0% were unemployed (see Table 13).

The proportion of people who were unemployed was highest in the Central Darling LGA (11.2%) and lowest in Balranald (5.3%).

Table 13. Employment in Far West district, by LGA

	Worked full-time		Worked part-time		Away from work		Unemployed		Total	
	No.	%	No.	%	No.	%	No.	%	No.	%
Balranald	614	59.4	302	29.2	63	6.1	55	5.3	1,034	100
Broken Hill	4,229	55.8	2,178	28.8	496	6.6	668	8.8	7,571	100
Central Darling	423	66.9	100	15.8	38	6.0	71	11.2	632	99.9
Wentworth	1,692	56.9	886	29.8	214	7.2	180	6.1	2,972	100
Far West	6,958	57.0	3,466	28.4	811	6.6	974	8.0	12,209	100
NSW		59.2		29.7		4.8		6.3		100

Source: ABS Quickstats, 2016 Census: <https://quickstats.censusdata.abs.gov.au> (accessed 25 September 2019)

Income

The median weekly personal income for people aged 15 years and over in the Far West district was \$542 (see Table 14).

Table 14. Median weekly income in Far West district, by LGA (people aged 15 years and over)

	Personal	Family	Household
Balranald	\$624	\$1,438	\$1,174
Broken Hill	\$527	\$1,279	\$965
Central Darling	\$460	\$1,075	\$901
Wentworth	\$555	\$1,308	\$1,052
Far West	\$542	\$1,275	\$1,023
NSW	\$664	\$1,780	\$1,486

Source: ABS Quickstats, 2016 Census: <https://www.abs.gov.au/websitedbs/D3310114.nsf/Home/2016%20QuickStats> (accessed 14 October 2019)

All LGAs in the Far West district have higher proportions of low-income households, compared to the state average (see Table 15). In Central Darling, 34.5% of households earned less than \$650 a week, compared to the NSW state average of 19.7%.

Table 15. Household income in Far West district, by LGA

	% of households with less than \$650 gross weekly income	% of households with more than \$3000 gross weekly income
Balranald	24.9	6.1
Broken Hill	32.0	8.2
Central Darling	34.5	5.4
Wentworth	26.9	8.6
NSW	19.7	18.7

Source: ABS Quickstats, 2016 Census: <https://www.abs.gov.au/websitedbs/D3310114.nsf/Home/2016%20QuickStats> (accessed 14 October 2019)

Socio-economic advantage and disadvantage

The Socio-Economic Indexes for Areas (SEIFA) is a measure used to rank areas in Australia according to socio-economic advantage and disadvantage. It is based on information from the five-yearly Census of Population and Housing.

The information presented below is based on the Index of Relative Socio-economic Advantage and Disadvantage (IRSAD). The IRSAD summarises information about the economic and social conditions of people and households within an area.

In the Far West district, out of the four LGAs, Wentworth has the highest SEIFA score (943) and is ranked the highest (see Table 16). This means Wentworth is relatively advantaged compared to the other LGAs in the Far West district.

Conversely, out of the four LGAs, Central Darling has the lowest SEIFA score (855) and is ranked the lowest. This means Central Darling is relatively disadvantaged compared to the other LGAs in the Far West district.

Table 16. LGA Index of Relative Socio-economic Advantage and Disadvantage

	Score ¹	NSW Rank ²	NSW Decile ³
Balranald	927	30	3
Broken Hill	887	7	1
Central Darling	855	2	1
Wentworth	943	49	4

Source: ABS, Socio-Economic Indexes for Areas (SEIFA), 2016, 2033.0.55.001: <https://www.abs.gov.au/AUSSTATS/abs@nsf/DetailsPage/2033.0.55.0012016?OpenDocument> (accessed 14 October 2019)

¹ **Score:** A low IRSAD score indicates that an area is relatively disadvantaged compared to an area with a higher score.

² **Rank:** All areas are ranked from the lowest to the highest score. The area with the lowest score is ranked number one, the area with the highest score is ranked 129. The State Rank can only be used to compare areas with a single state/territory.

³ **Decile:** All areas are ordered from the lowest to highest score, the lowest 10% of areas are given a decile number of 1 and so on, up to the highest 10% of areas which are given a number of 10. This means that areas are divided into 10 groups, depending on their score. Decile 1 is the most disadvantaged relative to other deciles.

Social Environment

Community safety and crime

In the Far West district, 377 domestic violence-related assaults and 240 non-domestic violence-related assaults occurred between January and December 2018 (see Table 17).

Domestic violence-related assault was most likely to occur in the Broken Hill LGA, with a rate of 1,147.0 per 100,000 people.

Table 17. Incidents of crime recorded by the NSW Police Force, by LGA, January-December 2018

	Domestic violence-related assault			Non-domestic violence-related assault		
	No.	Rate per 100,000 population	Rank in NSW ¹	No.	Rate per 100,000 population	Rank in NSW
Balranald	11	NC ²	NA ³	12	NC	NA
Broken Hill	205	1,147.0	5	147	822.5	5
Central Darling	89	NC	NA	32	NC	NA
Wentworth	72	1,032.7	7	49	702.8	10

Source: Bureau of Crime Statistics and Research, NSW Local Government Area Excel crime table: https://www.bocsar.nsw.gov.au/Pages/bocsar_crime_stats/bocsar_lgaexceltables.aspx (accessed 14 October 2019)

¹ Ranked by rate of domestic and non-domestic violence per 100,000 population, from 1-129 (where number 129 equals the lowest rate, and number one equals the highest).

² Trend information is not calculated if at least one 12-month period in the selected timeframe has less than 20 incidents

³ Ranks are only calculated for LGAs populations with populations greater than 3,000 people

In the Far West district, Broken Hill has the highest proportion of cannabis-related offences, at a rate of 430.8 per 100,000 of the population (see Table 18). Broken Hill also has the highest rate of amphetamine-related offences at a rate of 374.9 per 100,000 of the population.

Table 18. Recorded drug offences (possession and/or use) in Far West district, Jan-Dec 2018, by LGA

	Blacktown		Cumberland		Parramatta		The Hills Shire	
	No.	Rate per 100,000	No.	Rate per 100,000	No.	Rate per 100,000	No.	Rate per 100,000
Cocaine	1	NC ¹	3	16.8	0	NC	0	0.0
Narcotics	0	NC	0	0.0	0	NC	0	0.0
Cannabis	13	NC	77	430.8	6	NC	27	387.3
Amphetamine	4	NC	67	374.9	0	NC	8	114.7
Ecstasy	0	NC	1	5.6	0	NC	0	0.0
Other drugs	0	NC	26	145.5	0	NC	7	100.4

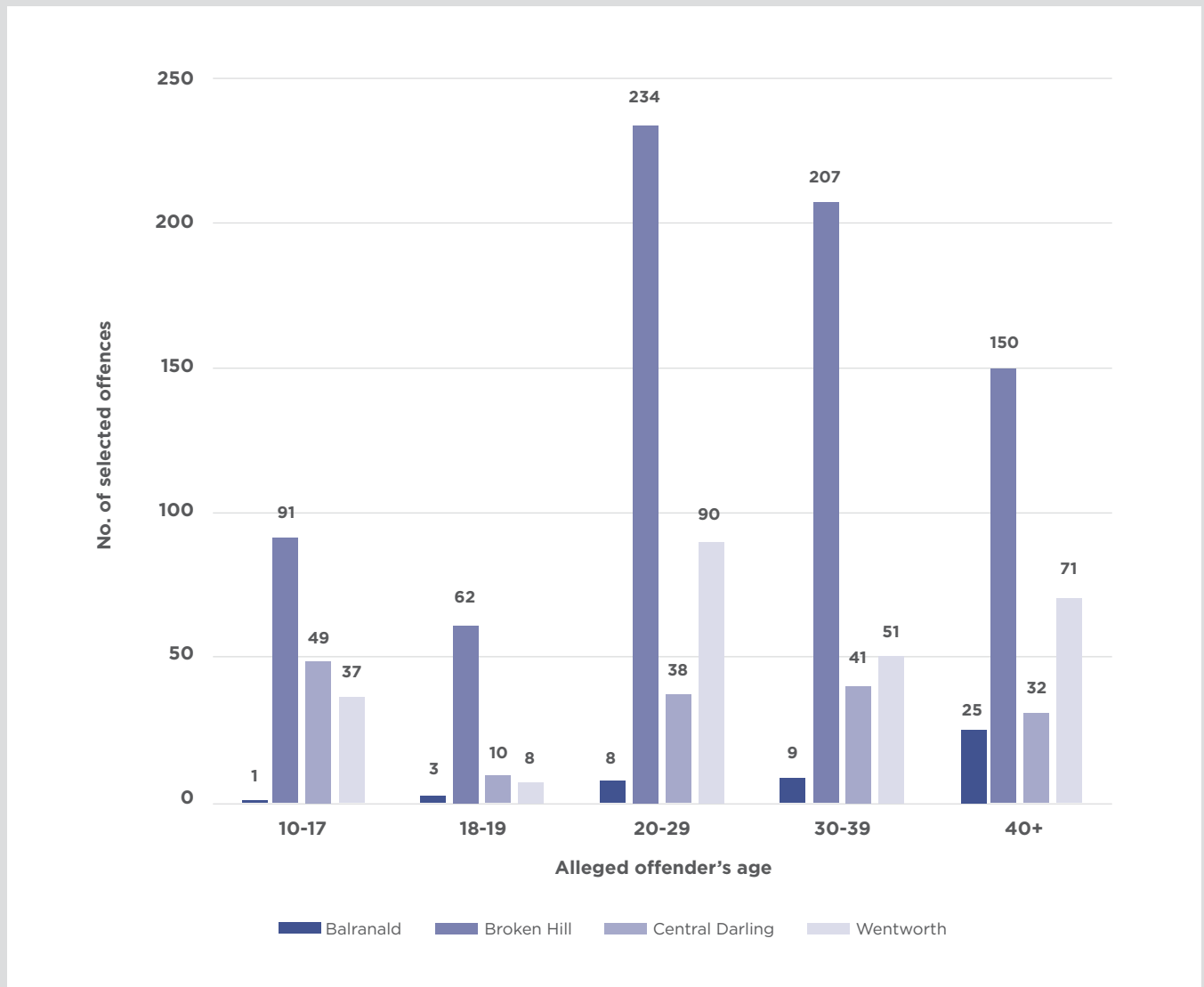
Source: Bureau of Crime Statistics and Research, NSW Local Government Area Excel crime table: https://www.bocsar.nsw.gov.au/Pages/bocsar_crime_stats/bocsar_lgaexceltables.aspx (accessed 26 September 2019)

¹ Trend information is not calculated if at least one 12-month period in the selected timeframe has less than 20 incidents

When looking at the age of alleged offenders in the Far West district, 20-29-year-olds committed the largest number of offences. This was followed by 30-39-year-olds and 40-year-olds and above (see Figure 6). This was common across Broken Hill and Wentworth.

In Balranald, 40-year-olds and above committed the largest number of offences. In Central Darling, 10-19-year-olds committed the largest number of offences.

Figure 6. Age of alleged offenders proceeded against by NSW Police for incidents of selected offences¹, 2018²



Source: Bureau of Crime Statistics and Research, NSW Local Government Area Excel crime table: https://www.bocsar.nsw.gov.au/Pages/bocsar_crime_stats/bocsar_lgaexceltables.aspx (accessed 14 October 2019)

¹ For the full list of selected offences please see the original source

² The year the alleged offenders were proceeded against, rather than the year the incident was recorded.

Maternal Health

Teenage pregnancy

Teenage parenthood is associated with a number of adversities, including low socioeconomic status, educational under-achievement and drug abuse. In turn, young parenthood can act to further entrench some of these problems and perpetuate a cycle of disadvantage.

In 2018, seven mothers aged 19 and under gave birth in the Far West district (see Table 19). This accounts for 3.7% of all births in this district. This proportion is higher than the NSW state average of 1.9%. Broken Hill had the highest proportion of young mothers aged 19 and under in 2018.

Table 19. Young mothers who gave birth¹ in Far West district, by LGA, 2018

LGA	No. of mothers 19 and under	% of mothers giving birth aged 19 and under	Total no. of births
Balranald	0	0.0	1
Broken Hill	7	4.0	176
Central Darling	0	0.0	11
Wentworth	0	0.0	3
Far West	7	3.7	191
NSW	1,792	1.9	94,145

Source: Healthstats NSW: http://www.healthstats.nsw.gov.au/Indicator/mab_mbth_age/mab_mbth_age_lgamap (accessed 1 October 2019)

¹ Number of mothers who gave birth (stillbirth or live birth) in NSW, regardless of place of permanent residence

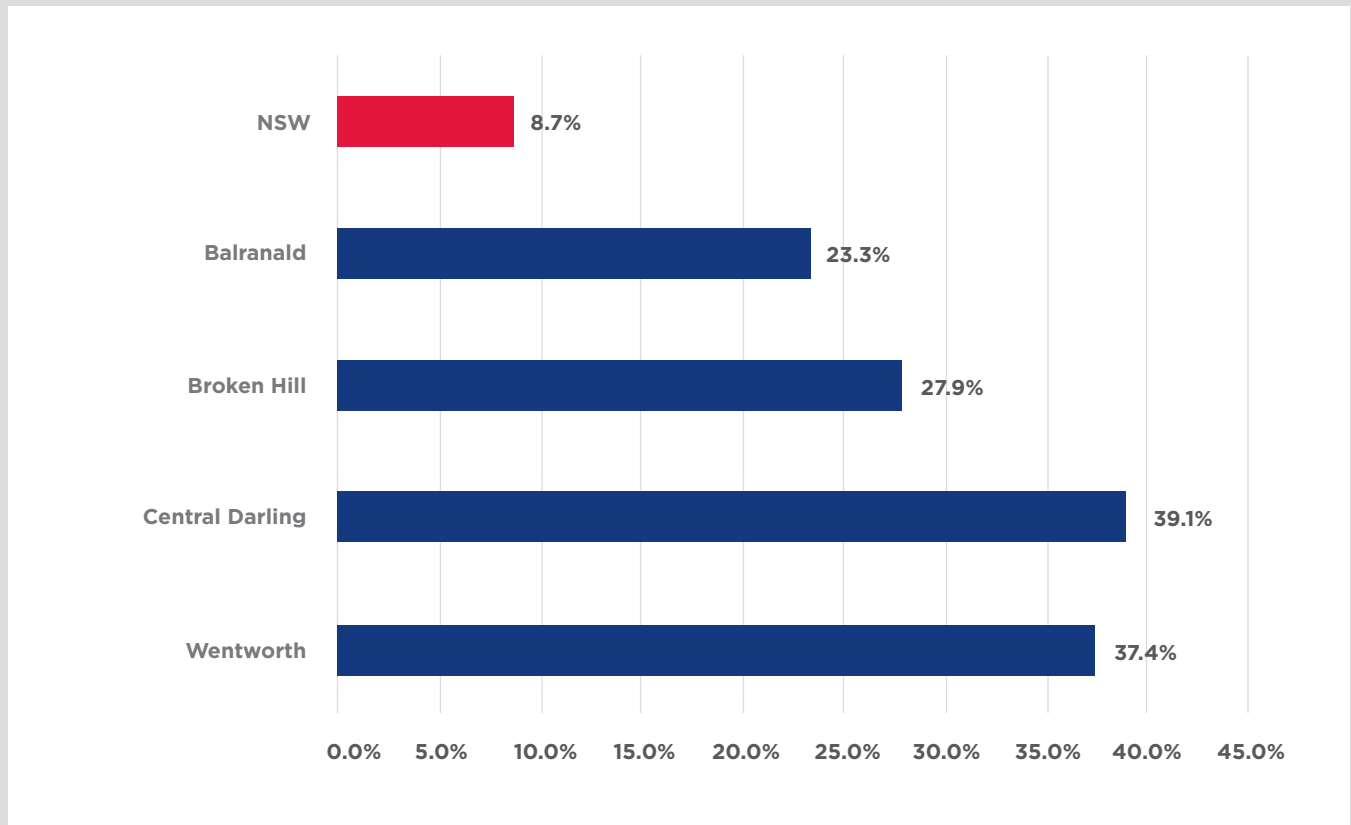
Smoking during pregnancy

Smoking during pregnancy is an important modifiable risk factor for low birth weight, pre-term birth, placental complications and perinatal mortality.

Between 2015-2017, mothers in the Far West were more likely to smoke during their pregnancy, compared to the NSW state as a whole (see Figure 7).

In the Far West district, Central Darling had the highest proportion of mothers who smoked during their pregnancy, at 39.1%. Balranald had the lowest proportion, at 23.3%, however, this is still much higher than the NSW average of 8.7%.

Figure 7. Proportion of mothers in the Far West district who smoked during pregnancy, 2015-2017



Source: Healthstats NSW: http://www.healthstats.nsw.gov.au/Indicator/mab_smo_cat/mab_smo_cat_lga_trend (accessed 14 October 2019)

Australian Mothers Index

Since 2000, Save the Children has produced a Mother's Index showing where mothers do best and where they face the greatest hardships. This index compares countries worldwide, as well as Australian states and territories and LGAs.

The information in Table 20 is derived from the Local-level Mothers Index. Five indicators make up this index:

- maternal health - the proportion of pregnant women with at least one antenatal visit in the first trimester
- children's wellbeing - the proportion of children under 5 developmentally on track (measured by the AEDC)
- educational status - the proportion of women completing Year 12 or above
- economic status - average household income
- relative socioeconomic disadvantage - a measure of a mother's access to material and social resources and her ability to participate in society.

These indicators were used to rank every LGA in NSW, where 1 is the best rank and 152 is the worst.

Wentworth performed the best out of the four LGAs in the Far West district, receiving a rank of 108 out of 152 (see Table 20). Central Darling received the lowest rank of the four LGAs, and the lowest rank in the state, at 152 out of 152. This means that mothers in Central Darling are facing much greater hardships than mothers in Wentworth.

Table 20. Mothers Index Ranking in the Far West district, by LGA

LGA	NSW Ranking
Balranald	138
Broken Hill	140
Central Darling	152
Wentworth	108

Source: Harris, J and Wells, M, 2016, *State of Australia's Mothers*, Save the Children, Sydney: <https://apo.org.au/sites/default/files/resource-files/2016/05/apo-nid63692-1201431.pdf> (accessed 14 October 2019)

Disability

Need for assistance with core activities

In the Far West district, 6.8% of the population need help or assistance with core activities (see Table 21). This amounts to 1,954 people. In the Broken Hill LGA, 8.0% of people need help or assistance with core activities. This was the highest proportion of all four LGAs. In the Central Darling LGA, 3.4% of people need help or assistance with core activities. This was the smallest proportion of all four LGAs.

Table 21. Need for assistance with core activities¹ in the Far West district, by LGA

	Has need for assistance		Does not have need for assistance		Need for assistance not stated		Total
	No.	%	No.	%	No.	%	
Balranald	99	4.3	1,944	85.0	249	10.8	2,287
Broken Hill	1,424	8.0	14,745	83.3	1,539	8.7	17,708
Central Darling	63	3.4	1,397	76.2	371	20.3	1,833
Wentworth	368	5.4	5,654	83.2	779	11.4	6,794
Far West	1,954	6.8	23,740	82.9	2,938	10.3	28,622
NSW	402,048	5.4	6,558,727	87.7	519,452	6.9	7,480,228

Source: ABS, 2016 Census Community Profiles: <https://www.abs.gov.au/websitedbs/D3310114.nsf/Home/2016%20Census%20Community%20Profiles> (accessed 14 October 2019)

¹ A person's need for help or assistance in one or more of the three core activity areas of self-care, mobility, and communication, because of a disability, long-term health condition (lasting six months or more) or old age.

Housing

Households

In the Far West district, the average number of people per household was 2.4 (see Table 22).

The majority of households in the Far West district are family households (64.4%). Single-person households make up 33.2% of all households. Only 2.4% of households in the district are group households.

Table 22. Household Composition in Far West, by LGA

LGA	Single-person households		Group house-hold		Family households		Total	Average people per household
	No.	%	No.	%	No.	%		No.
Balranald	224	27.9	16	2.0	563	70.1	803	2.5
Broken Hill	2,532	53.3	182	2.5	4,461	62.2	7,175	2.2
Central Darling	228	38.1	13	2.2	358	59.8	599	2.4
Wentworth	662	27.4	51	2.1	1,707	70.5	2,420	2.4
Far West	3,646	33.2	262	2.4	7,089	64.4	10,997	2.4
NSW		23.8		4.2		72.0		2.6

Source: ABS Quickstats, 2016 Census: <https://www.abs.gov.au/websitedbs/D3310114.nsf/Home/2016%20QuickStats> (accessed 14 October 2019)

Tenure types

In the Far West district, 41.0% of occupied private dwellings were owned outright, 28.5% were owned with a mortgage, and 25.4% were rented (see Table 23).

Broken Hill had the highest proportion of homes owned outright, at 42.1%. This was followed closely by Balranald, at 41.3%.

Central Darling had the highest proportion of rented private dwellings, at 42.1%.

Table 23. Tenure of occupied private dwelling in the Far West district, by LGA

LGA	Owned outright		Owned with mortgage		Rented		Other tenure		Not stated	
	No.	%	No.	%	No.	%	No.	%	No.	%
Balranald	333	41.3	198	24.6	239	29.7	8	1.0	28	3.5
Broken Hill	3,026	42.1	2,130	29.6	1,695	23.6	40	0.6	293	4.1
Central Darling	235	38.9	53	8.8	254	42.1	24	4.0	38	6.3
Wentworth	927	38.3	760	31.4	606	25.0	28	1.2	101	4.2
Far West	4,521	41.0	3,141	28.5	2,794	25.4	100	0.9	460	4.1
NSW		32.2		32.3		31.8		0.9		2.8

Source: ABS Quickstats, 2016 Census: <https://www.abs.gov.au/websitedbs/D3310114.nsf/Home/2016%20QuickStats> (accessed 14 October 2019)

Housing affordability

One way to measure housing stress is to calculate the percentage of households who spend more than 30% of their household income on rent or mortgage payments.

In the Far West district, Wentworth has the highest proportion of households in rental stress (7.4%) (see Table 24). This was followed by Broken Hill at 6.9% and Balranald at 6.6%. Central Darling had the smallest proportion of households in rental stress, at 4.5%. Rental stress in all four LGAs was below the NSW average.

Wentworth also had the highest proportion of households in mortgage stress, at 5.1%. This was followed by Broken Hill at 3.1% and Balranald at 2.3%. Central Darling had the smallest proportion of household in mortgage stress, at 1.6%. Mortgage stress in all four LGAs was below the NSW average.

Table 24. Mortgage and rent payments in the Far West district, by LGA¹

	Balranald	Broken Hill	Central Darling	Wentworth	New South Wales
Average weekly rent	\$150	\$190	\$100	\$160	\$380
Renting households where rent payments are less than 30% of household income	93.4%	93.1%	95.5%	92.6%	87.1%
Renting households where rent payments are less than 30% of household income	6.6%	6.9%	4.5%	7.4%	12.9%
Average monthly mortgage repayments	\$950	\$953	\$575	\$1,200	\$1,986
Home-owning households where mortgage repayments are less than 30% of household income	97.7%	96.9%	98.4%	94.9%	92.6%
Home-owning households with mortgage repayments greater than or equal to 30% of household income	2.3%	3.1%	1.6%	5.1%	7.4%

Source: ABS Quickstats, 2016 Census: <https://www.abs.gov.au/websitedbs/D3310114.nsf/Home/2016%20QuickStats> (accessed 14 October 2019)

¹ The number of households where rent and mortgage payments were 30% or more of an imputed income measure are expressed in this table as a proportion of the total number of households in an area. The nature of the income imputation means that the reported proportion may significantly overstate the true proportion.

Social housing

As of 30 June 2018, there were 558 social housing residential dwellings in the Far West district (see Table 25). Indigenous Community Housing made up 66.7% of all properties and Community Housing made up 33.3%.

Table 25. Social Housing Residential Dwellings in Far West district, as at 30 June 2018

	Public Housing		Aboriginal Housing Office		Community Housing		Indigenous Community Housing		Total
	No.	%	No.	%	No.	%	No.	%	
Balranald	0	0.0	0	0.0	16	33.3	32	66.7	48
Broken Hill	0	0.0	0	0.0	153	69.2	68	30.8	221
Central Darling	0	0.0	0	0.0	0	0.0	152	100	152
Wentworth	0	0.0	0	0.0	17	12.4	120	87.6	137
Far West	0	0.0	0	0.0	186	33.3	372	66.7	558
NSW	111,341	73.4	4,603	3.0	30,757	20.3	4,971	5.3	151,672

Source: FACS Administrative Data, unpublished.

As of 30 June 2018, there were no public housing and Aboriginal housing tenancies in the Far West district (see Table 26).

Table 26. Public Housing and Aboriginal Housing Office Tenancies in Far West district, as at 30 June 2018

	Public Housing		Aboriginal Housing Office		Total
	No.	%	No.	%	
Balranald	0	0.0	0	0.0	0
Broken Hill	0	0.0	0	0.0	0
Central Darling	0	0.0	0	0.0	0
Wentworth	0	0.0	0	0.0	0
Far West	0	0	0	0	0
NSW	106,895	96.0	4,414	4.0	111,309

Source: FACS Administrative Data, unpublished.