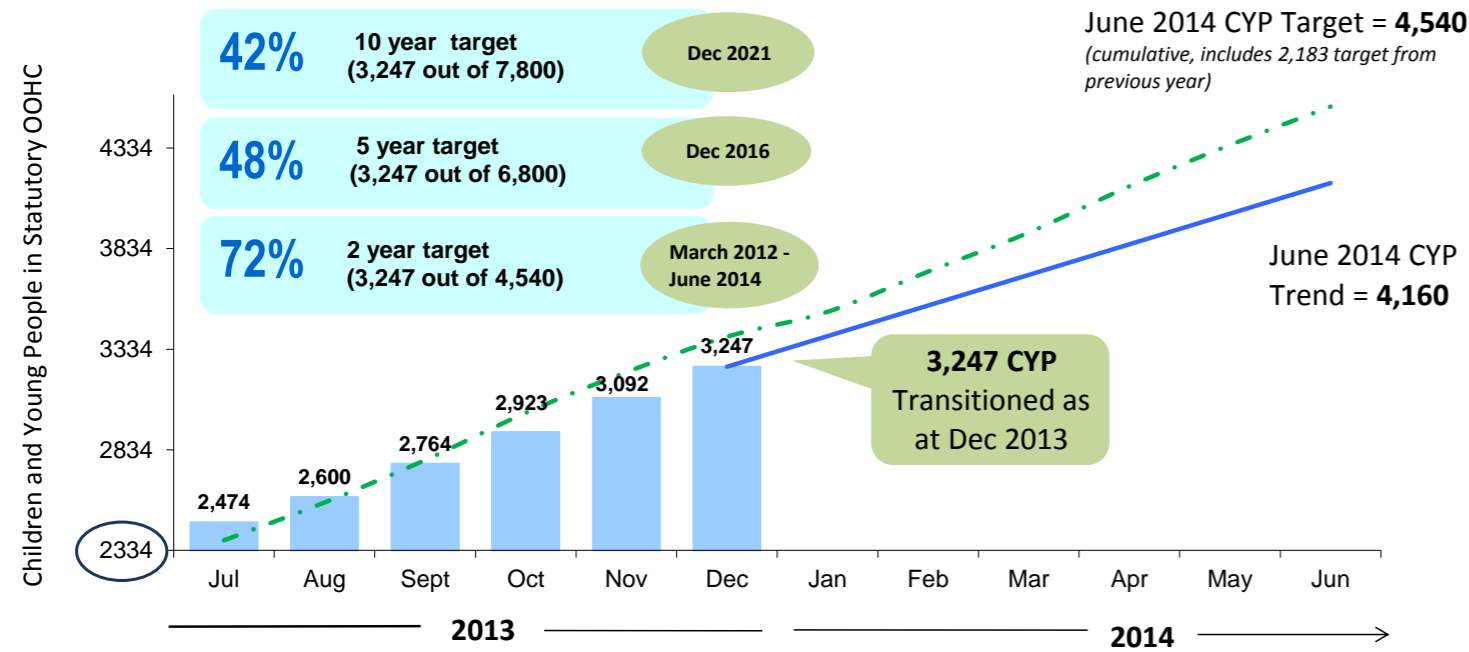
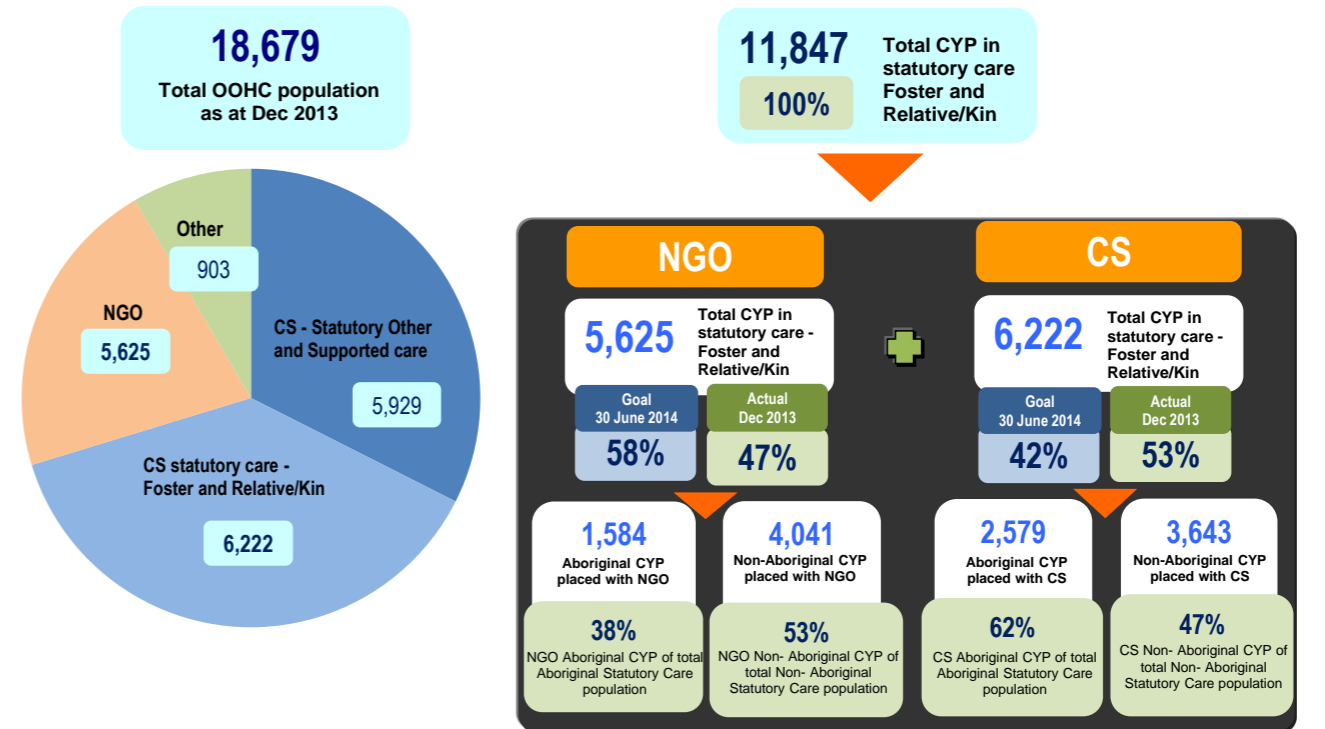


Transition Progress - December 2013

Number of existing and new statutory CYP OOHC entries transitioned by month (Cumulative)

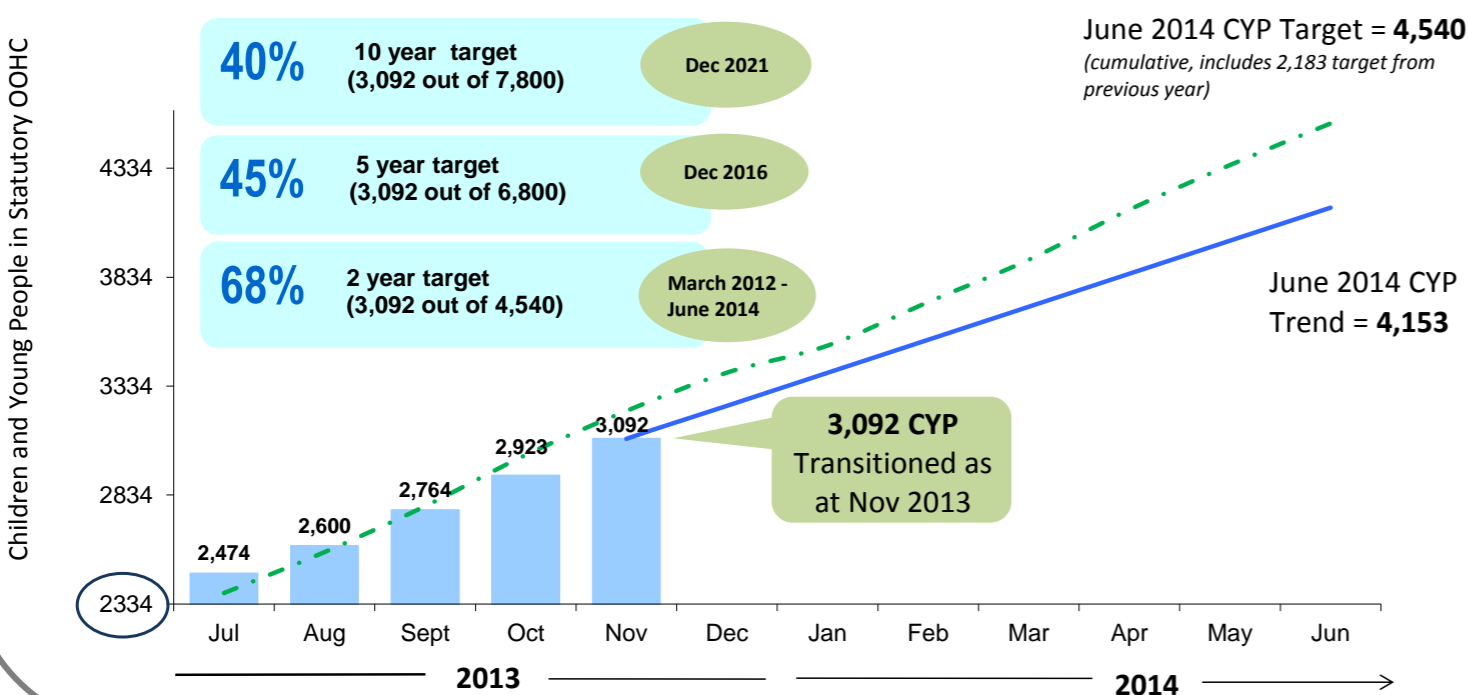


December 2013 overall OOHC population

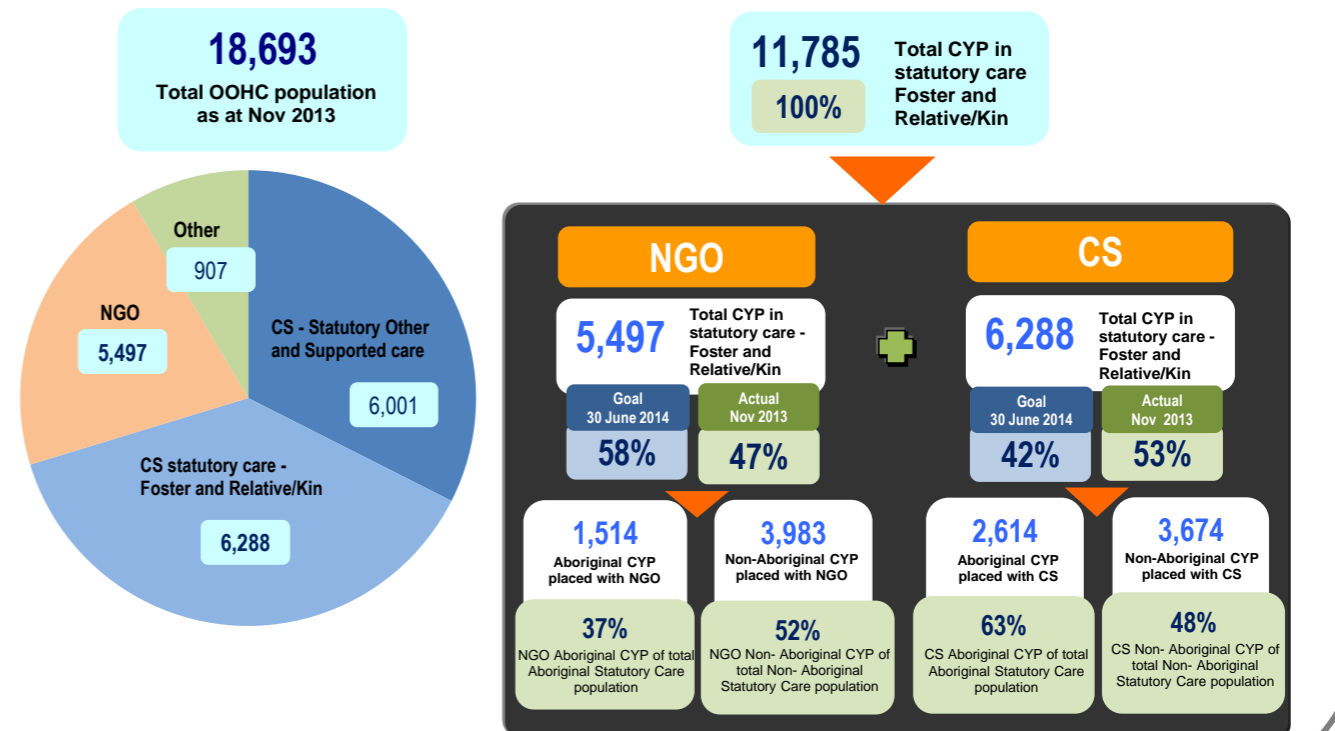


Transition Progress - November 2013

Number of existing and new statutory CYP OOHC entries transitioned by month (Cumulative)

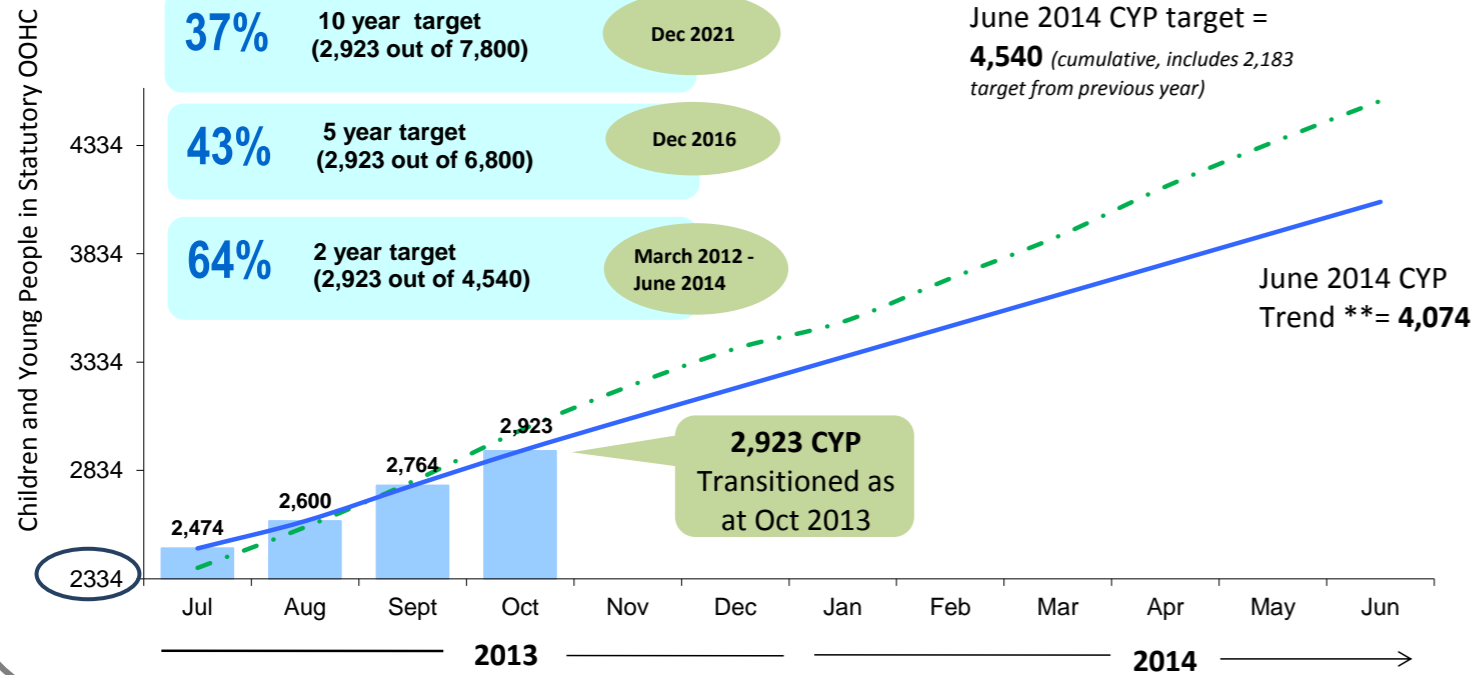


November 2013 overall OOHC population

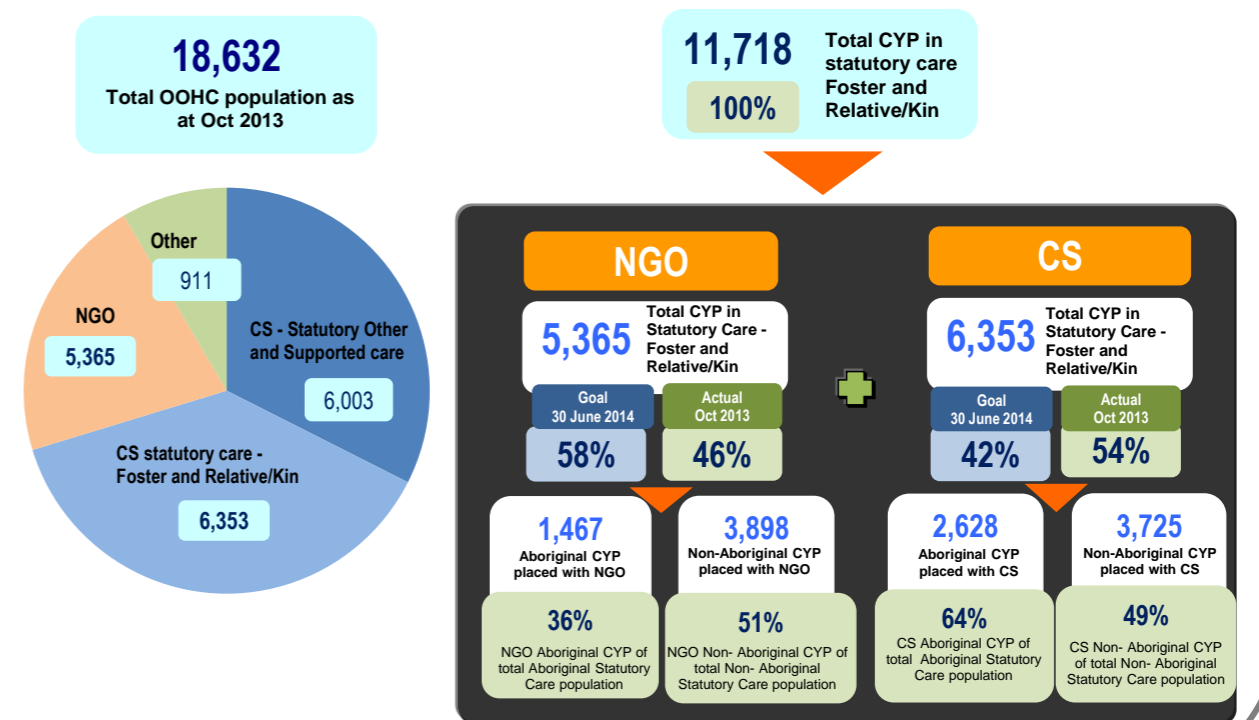


### Transition Progress - October 2013

Number of existing and new statutory Children and Young People entries transitioned by month (Cumulative)

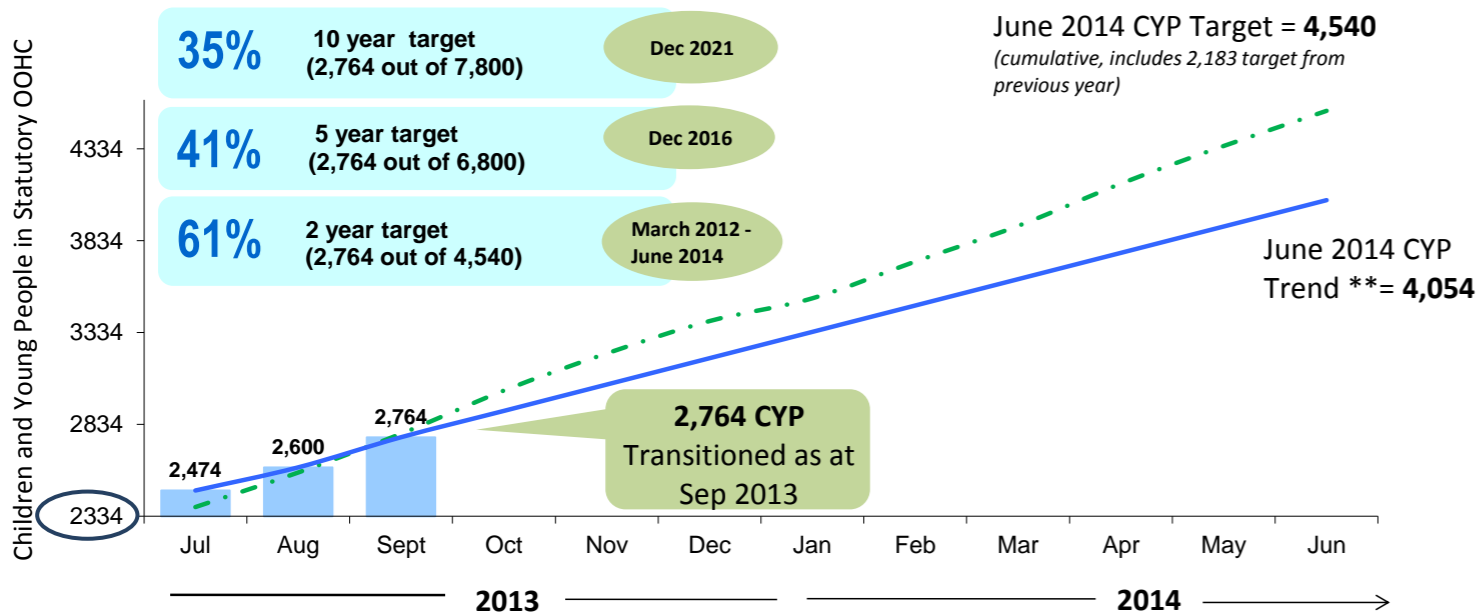


### October 2013 overall OOH population

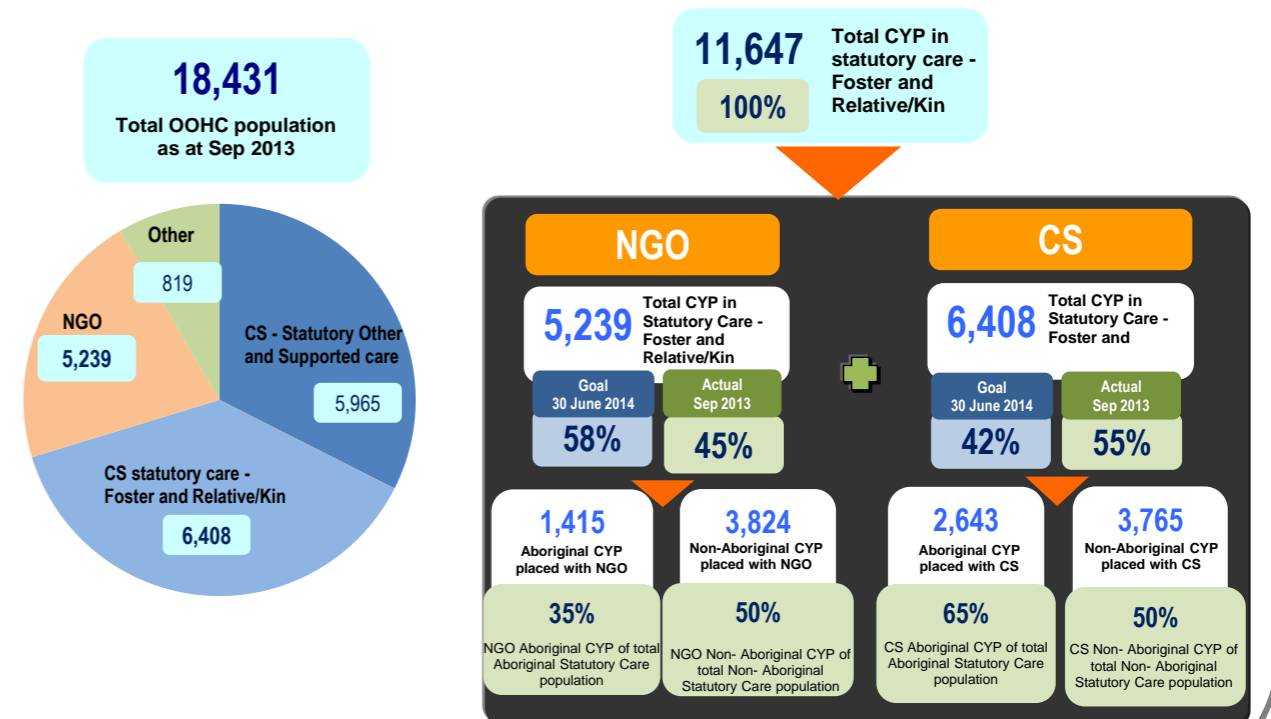


### Transition Progress - Sept 2013

Number of existing and new statutory Children and Young People entries transitioned by month (Cumulative)



### Sept 2013 overall OOH population



## Transition summary - graph

The graph on the left above illustrates the cumulative number of children and young people (CYP) in statutory out-of-home care (OOHC) who have transitioned to the non-government sector.

It shows a month-to-month account of transition achievements against targets from the start of transition in March 2012.

The cumulative number in each month represents both existing CYP in statutory OOHC placements (that have transitioned from Community Services to a non-government organisation – NGO) and new statutory OOHC entries placed directly with NGOs.

The cumulative numbers per month provide a clear picture as to how transition is tracking against Year 2\*, Year 5 and Year 10 targets.

The percentages highlighted in the boxes shows transition progress against our transition targets.

### Key:

CYP refers to Children and Young People

OOHC refers to Out-of-Home Care

NGO refers to Non- Government Organisation

\*Year 2 represents the period from March 2012 - 30 June 2014

\*\*Trend is used as an indicator of future performance, based on actual past results for the state or particular region. For example, the results for June, July and Aug are averaged and used as a guide to extrapolate monthly transition CYP numbers. The trend will change from month-to-month to account for the changing average as the year progresses.

## Transition summary - pie chart and diagram

The pie chart represents the total number of CYP in OOHC up to and including the month stated. In this chart, the OOHC sector has been broken down into the following categories:

- CYP in 'Community Services Statutory Care – Foster and Relative/Kinship'
- CYP in 'NGO Statutory Care – Foster and Relative/Kinship'
- CYP in 'Community Services – Statutory Other and Supported Care', which includes high needs CYP, intensive foster care
- CYP in 'Other' includes CYP in the OOHC population that have hospital placements, placed with other government agencies etc.

Children and young people in the 'Statutory Other and Supported Care' and 'Other' categories are not eligible to be transferred. From this, the total number of CYP eligible to transfer is 11,718. This number represents the total number of CYP in Statutory Care – Foster and Relative/Kinship.

The diagram shows the comparative number of CYP in NGO placements with Community Services placements. It also shows a breakdown of Aboriginal and non-Aboriginal CYP that are currently placed with an NGO or Community Services.