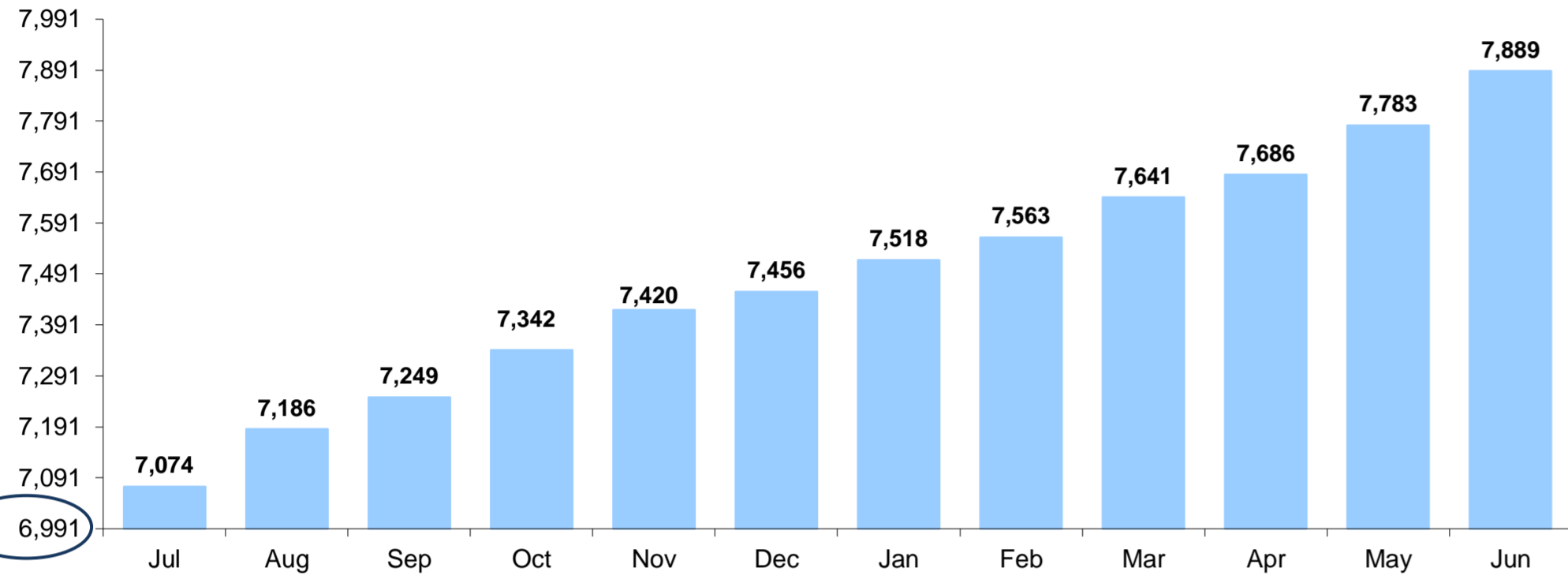


OOHC and Transition Dashboard 2016/17 - New South Wales June 2017

CYP transitioned by month - Cumulative from March 2012



18,813

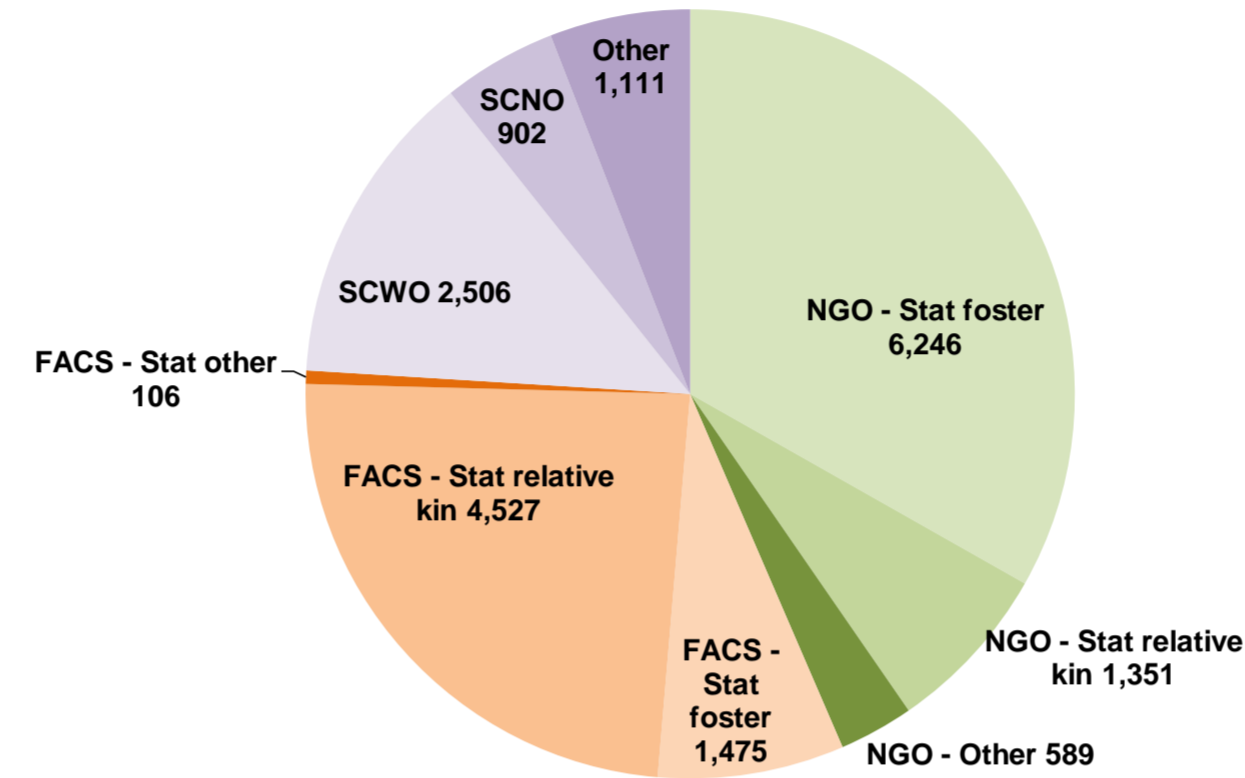
Total OOHC population as at June 2017

2,664

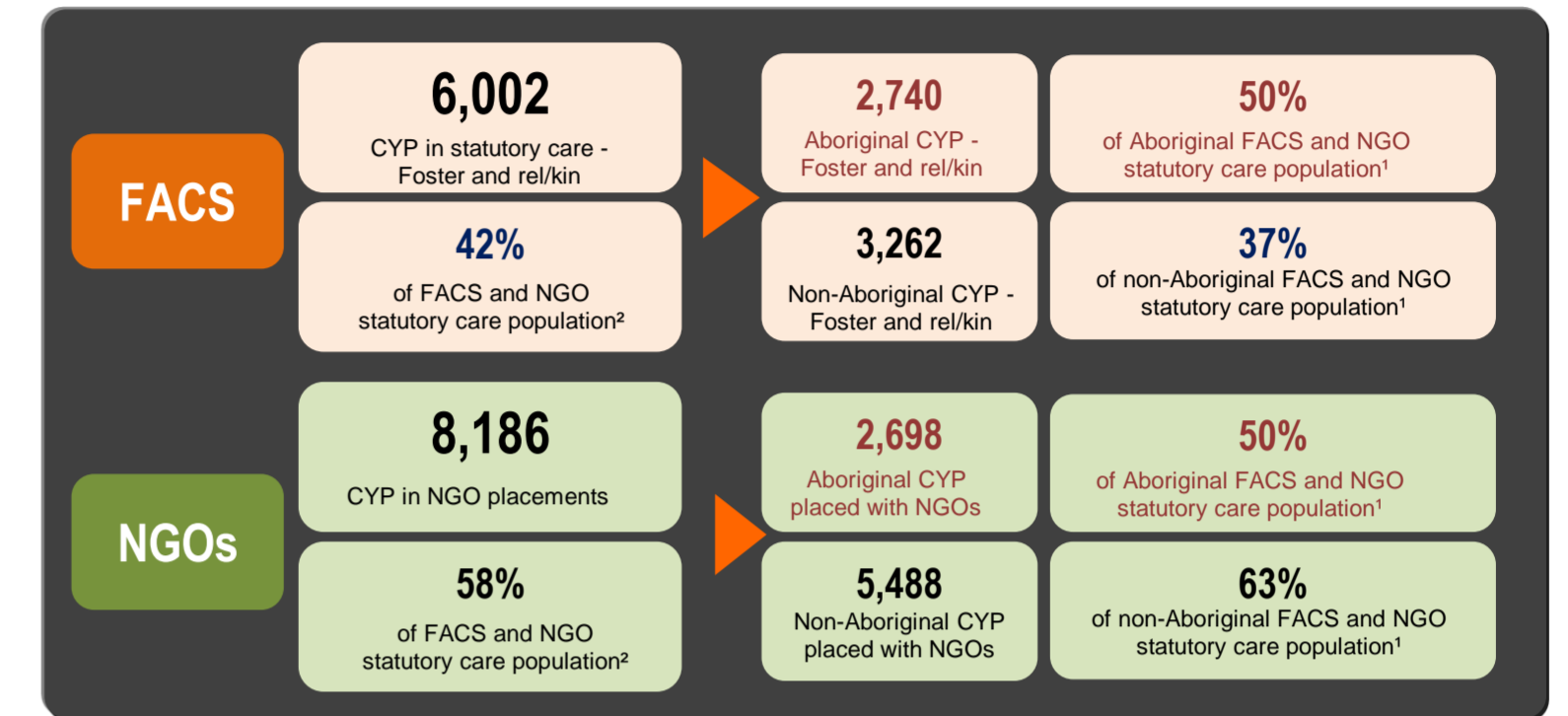
Guardianship orders as at June 2017

FACS and NGO statutory care population¹
as of June 2017

= 14,188



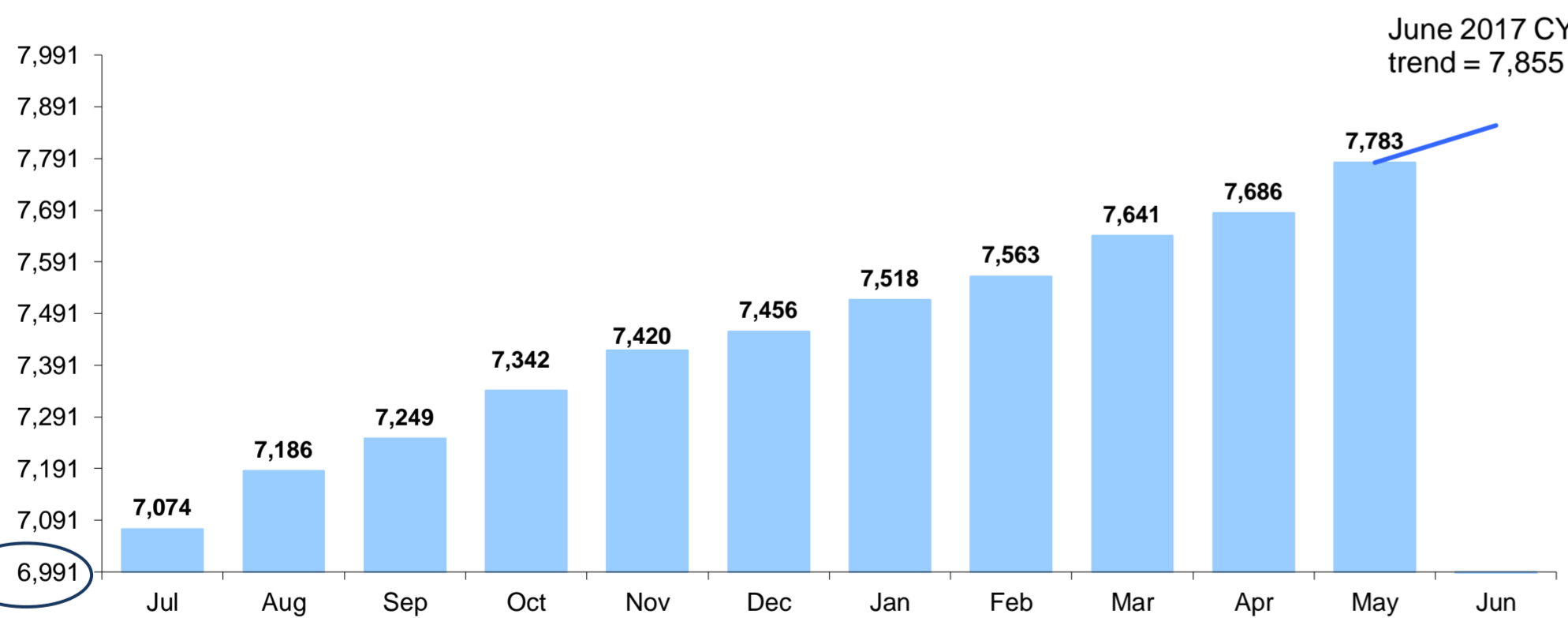
Total CYP in OOHC as at June 2017



¹ and ². Includes CYP in FACS - Stat foster, FACS - Stat relative kin, NGO - Stat foster, NGO relative kin and NGO - Other.

OOHC and Transition Dashboard 2016/17 - New South Wales May 2017

CYP transitioned by month - Cumulative from March 2012



18,847

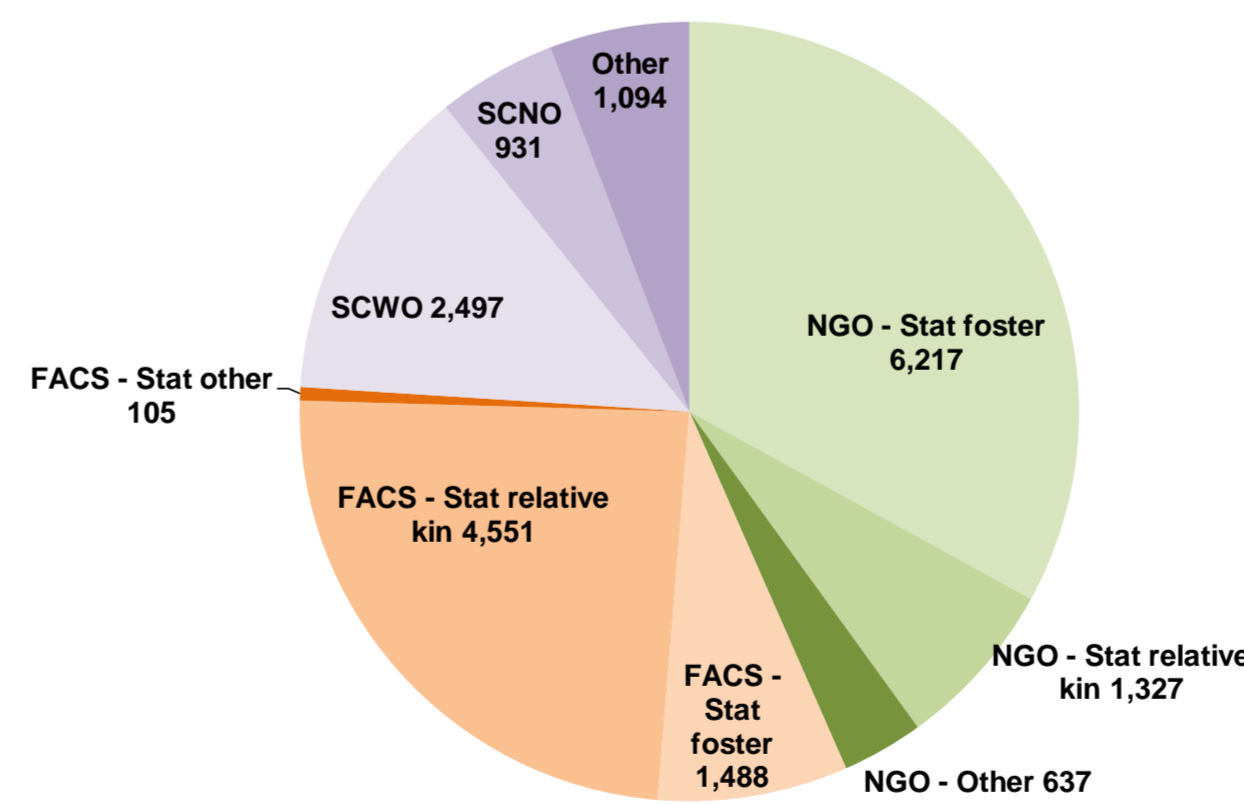
Total OOHC population as at May 2017

2,632

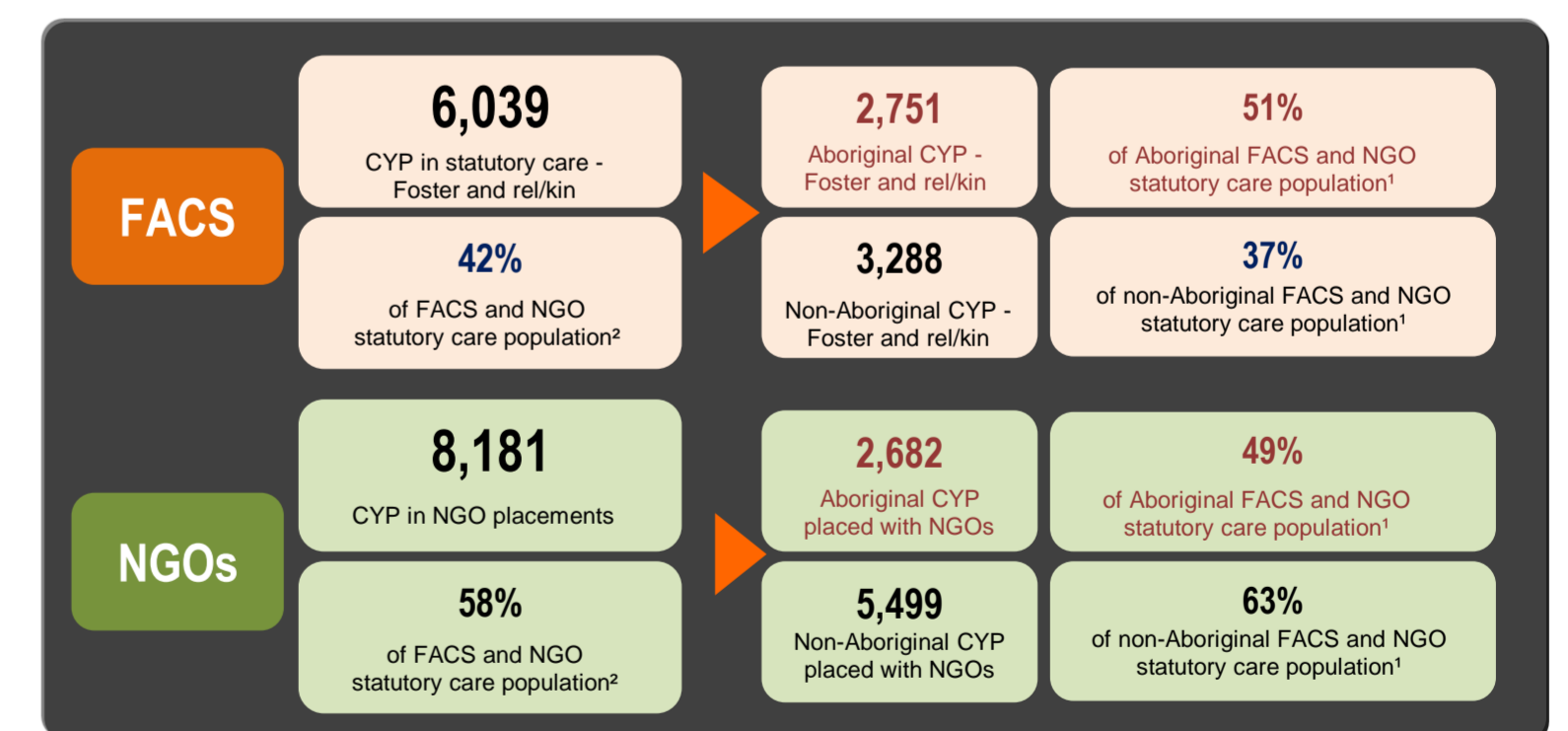
Guardianship orders as at May 2017

FACS and NGO statutory care population¹
as of May 2017

= 14,220



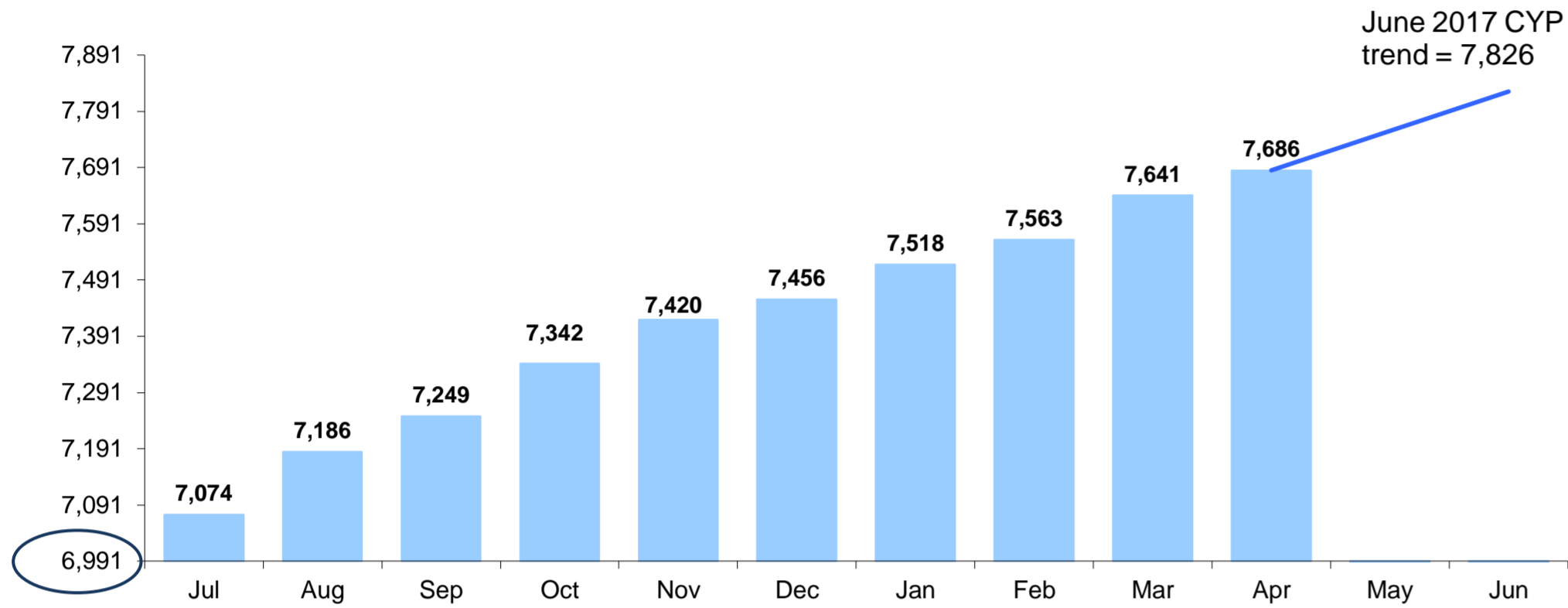
Total CYP in OOHC as at May 2017



¹ and ². Includes CYP in FACS - Stat foster, FACS - Stat relative kin, NGO - Stat foster, NGO relative kin and NGO - Other.

OOHC and Transition Dashboard 2016/17 - New South Wales April 2017

CYP transitioned by month - Cumulative from March 2012

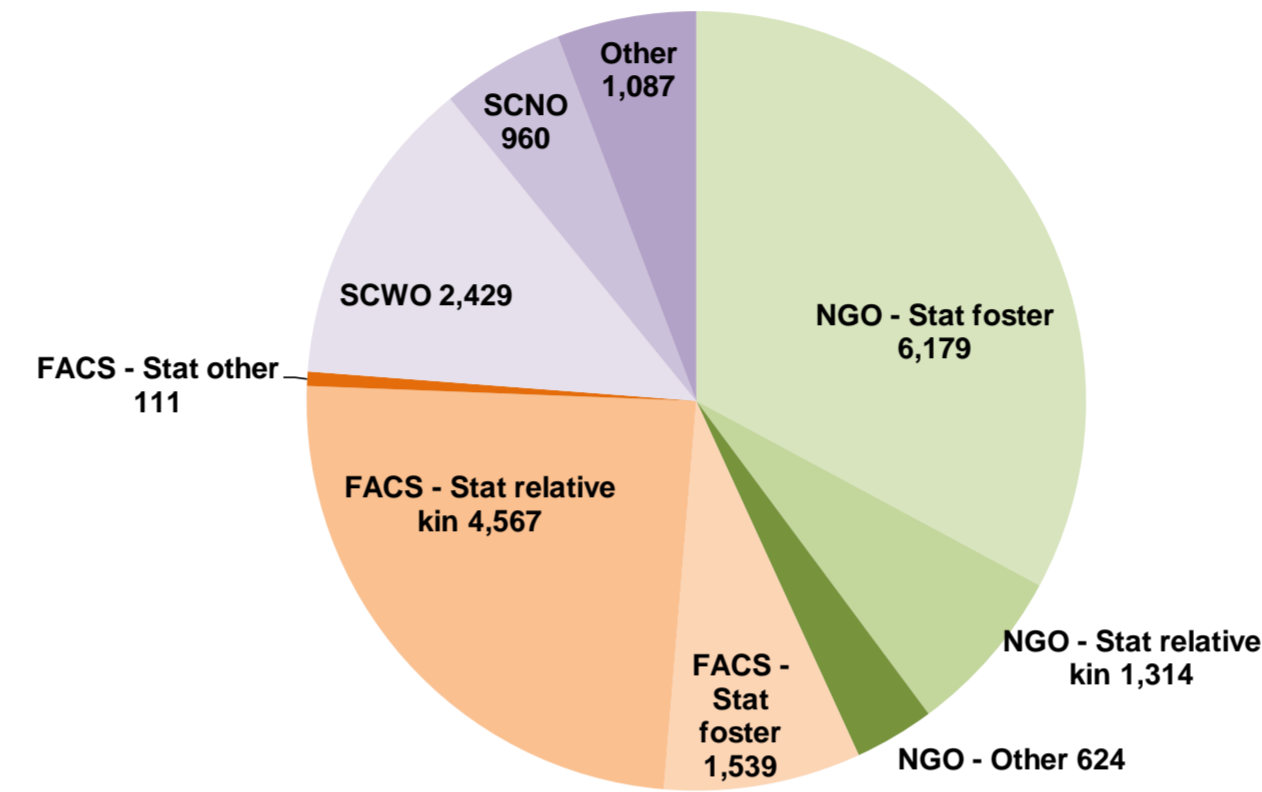


18,810

Total OOHC population as at April 2017

2,594

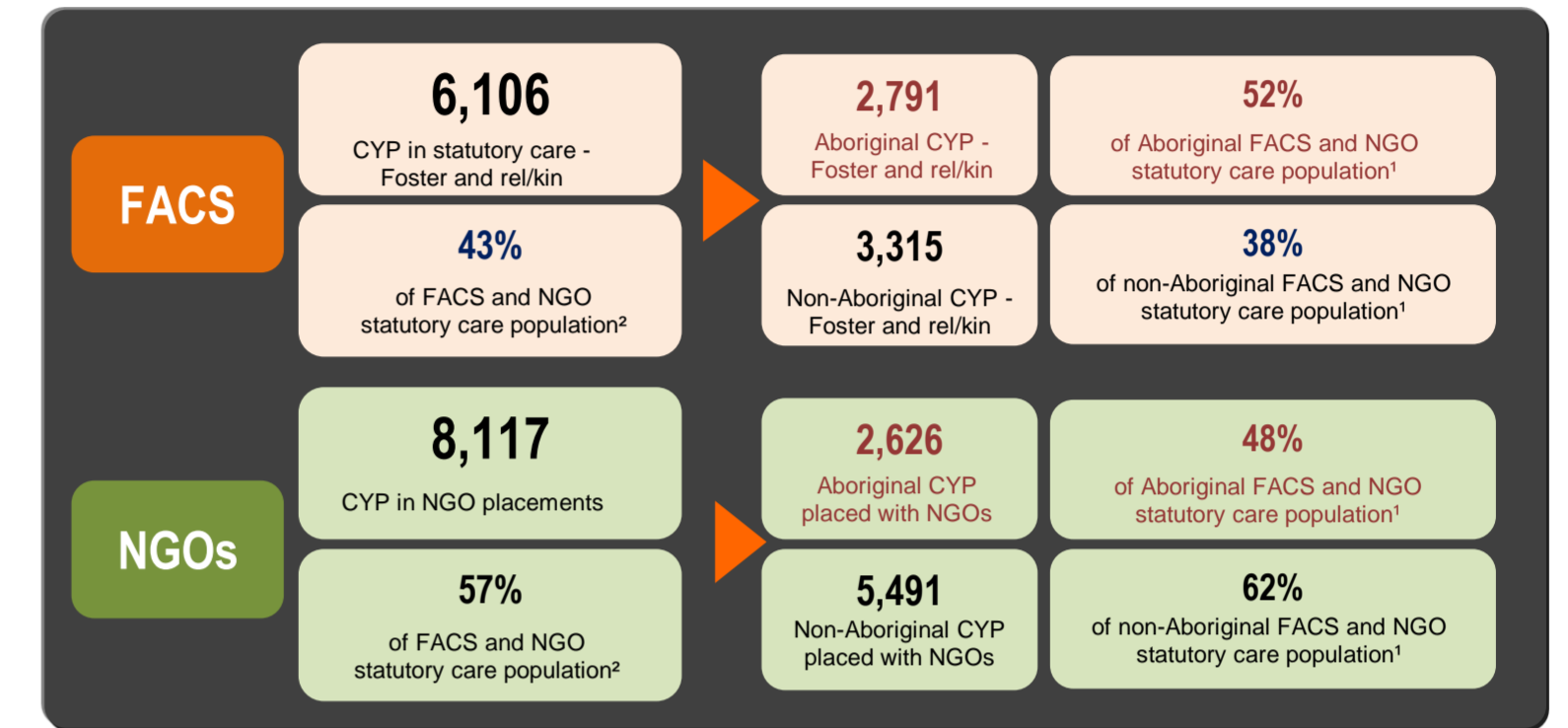
Guardianship orders as at April 2017



Total CYP in OOHC as at April 2017

FACS and NGO statutory care population¹
as at April 2017

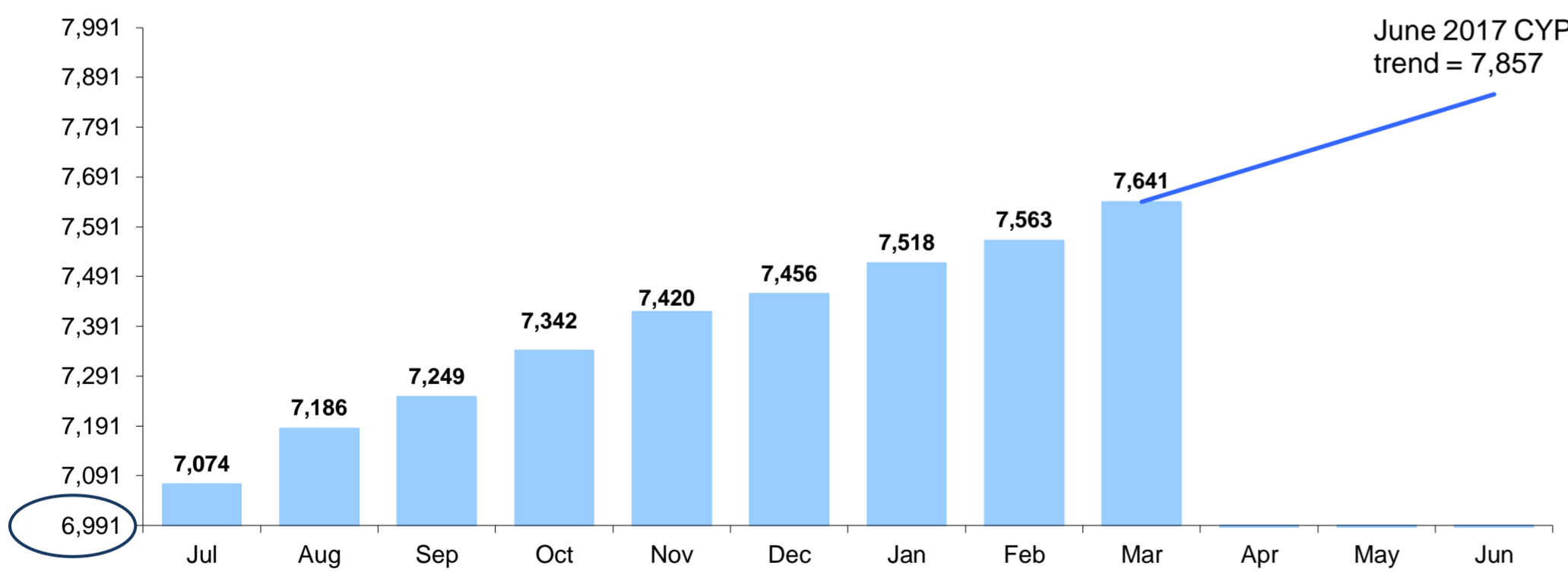
= 14,223



¹ and ². Includes CYP in FACS - Stat foster, FACS - Stat relative kin, NGO - Stat foster, NGO relative kin and NGO - Other.

OOHC and Transition Dashboard 2016/17 - New South Wales March 2017

CYP transitioned by month - Cumulative from March 2012

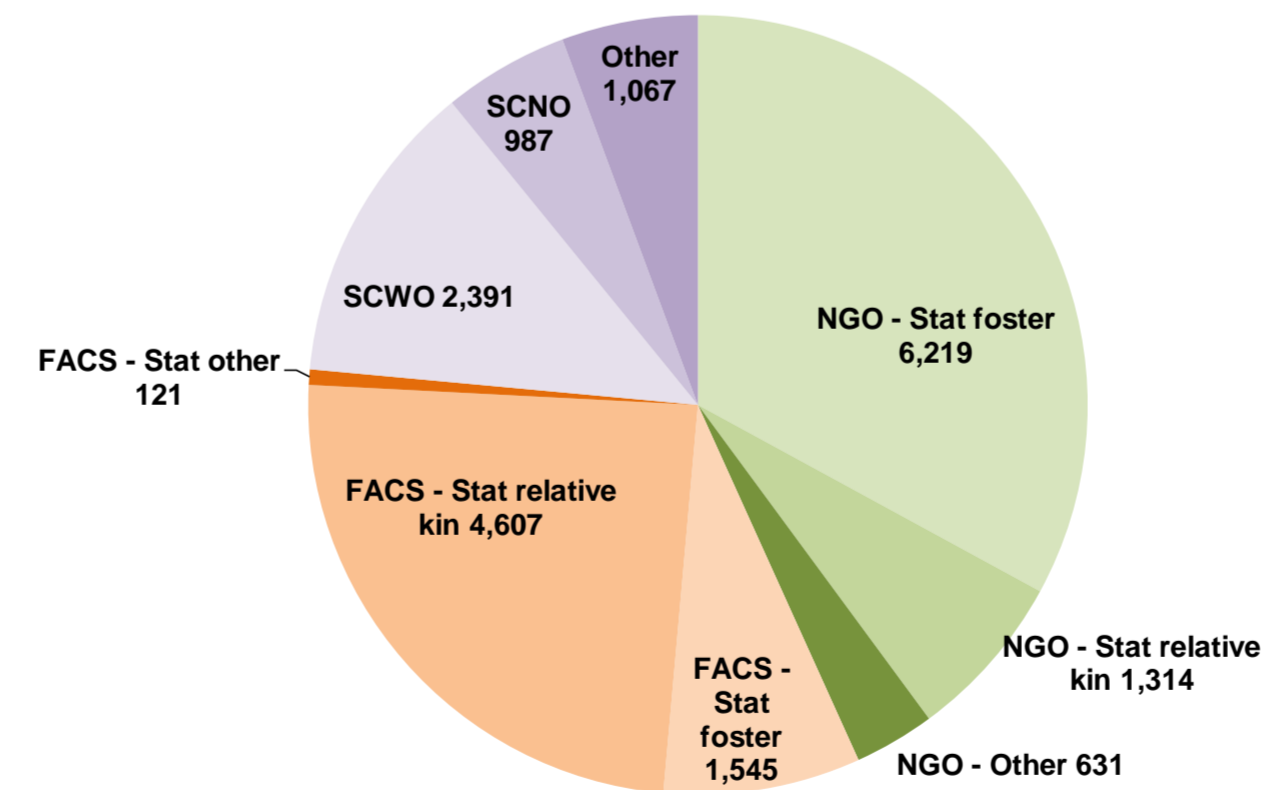


18,882

Total OOHC population as at March 2017

2,593

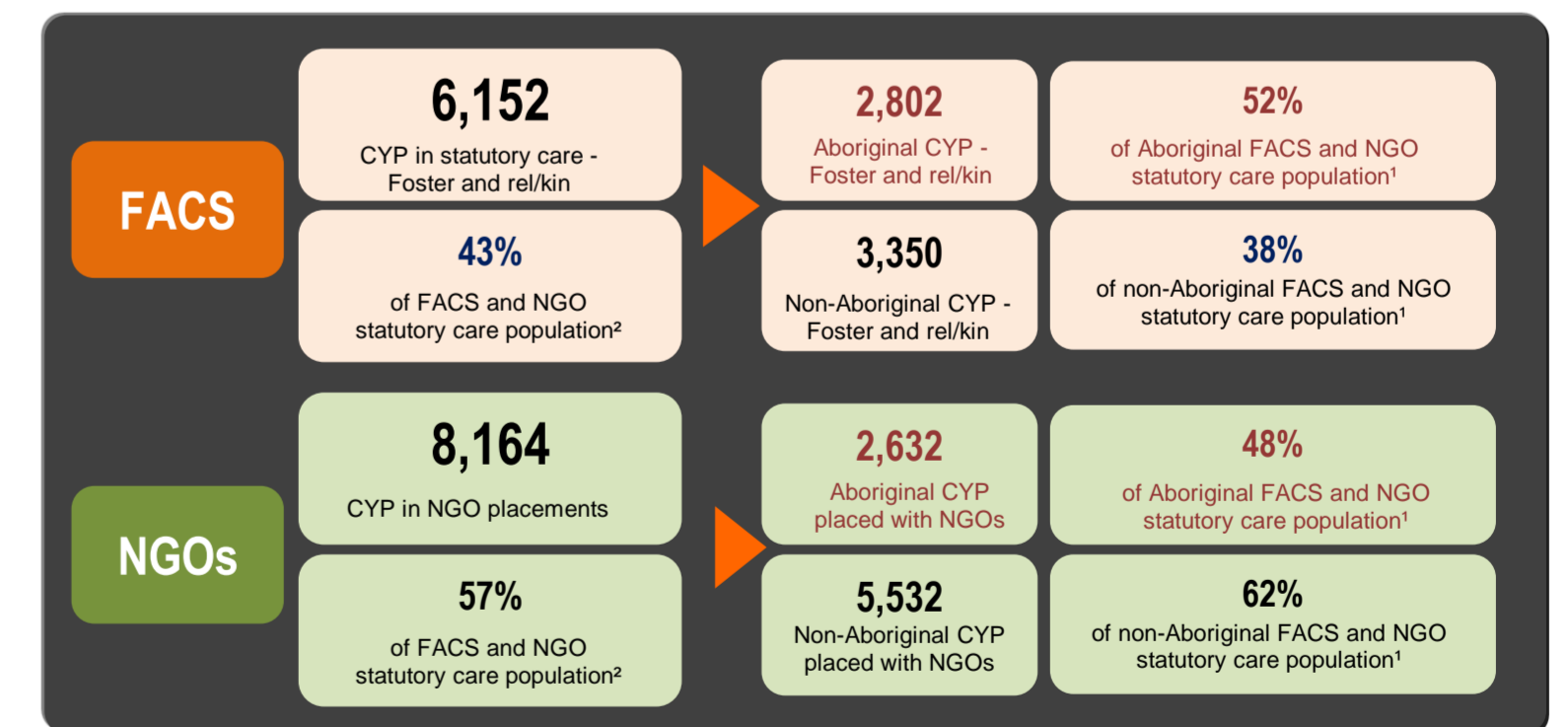
Guardianship orders as at March 2017



Total CYP in OOHC as at March 2017

FACS and NGO statutory care population¹
as at March 2017

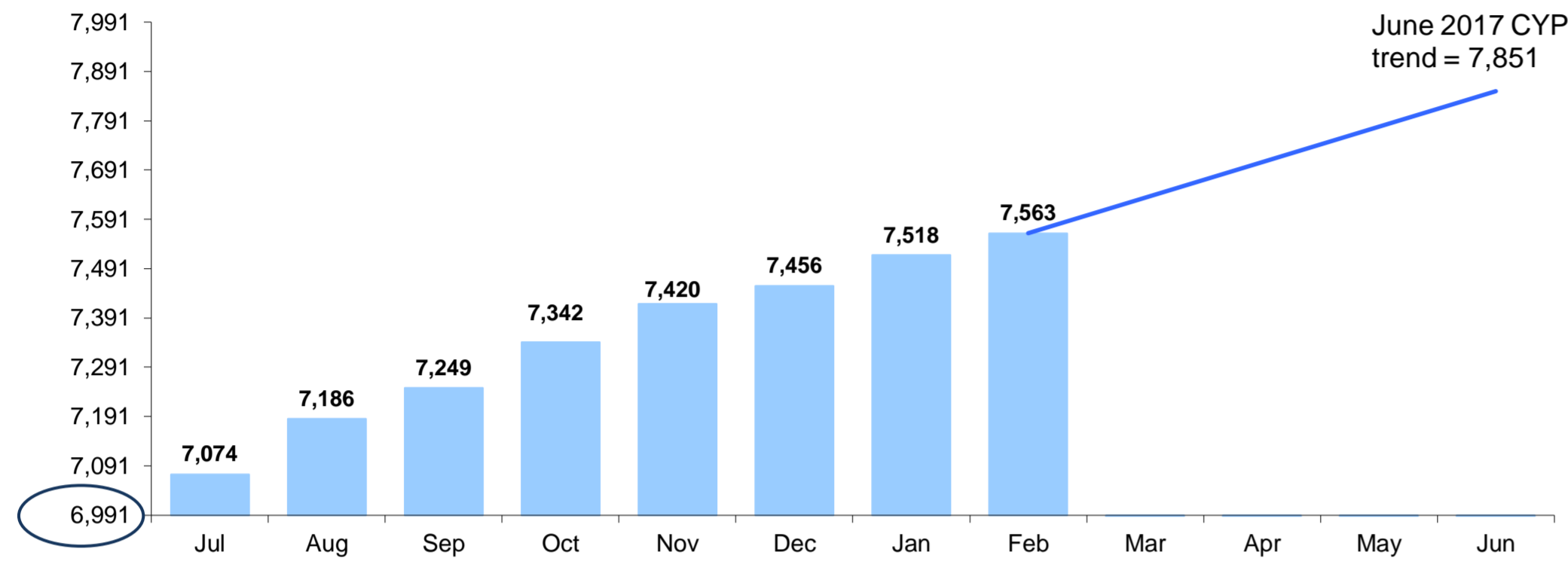
= 14,316



¹ and ². Includes CYP in FACS - Stat foster, FACS - Stat relative kin, NGO - Stat foster, NGO relative kin and NGO - Other.

OOHC and Transition Dashboard 2016/17 - New South Wales February 2017

CYP transitioned by month - Cumulative from March 2012



18,978

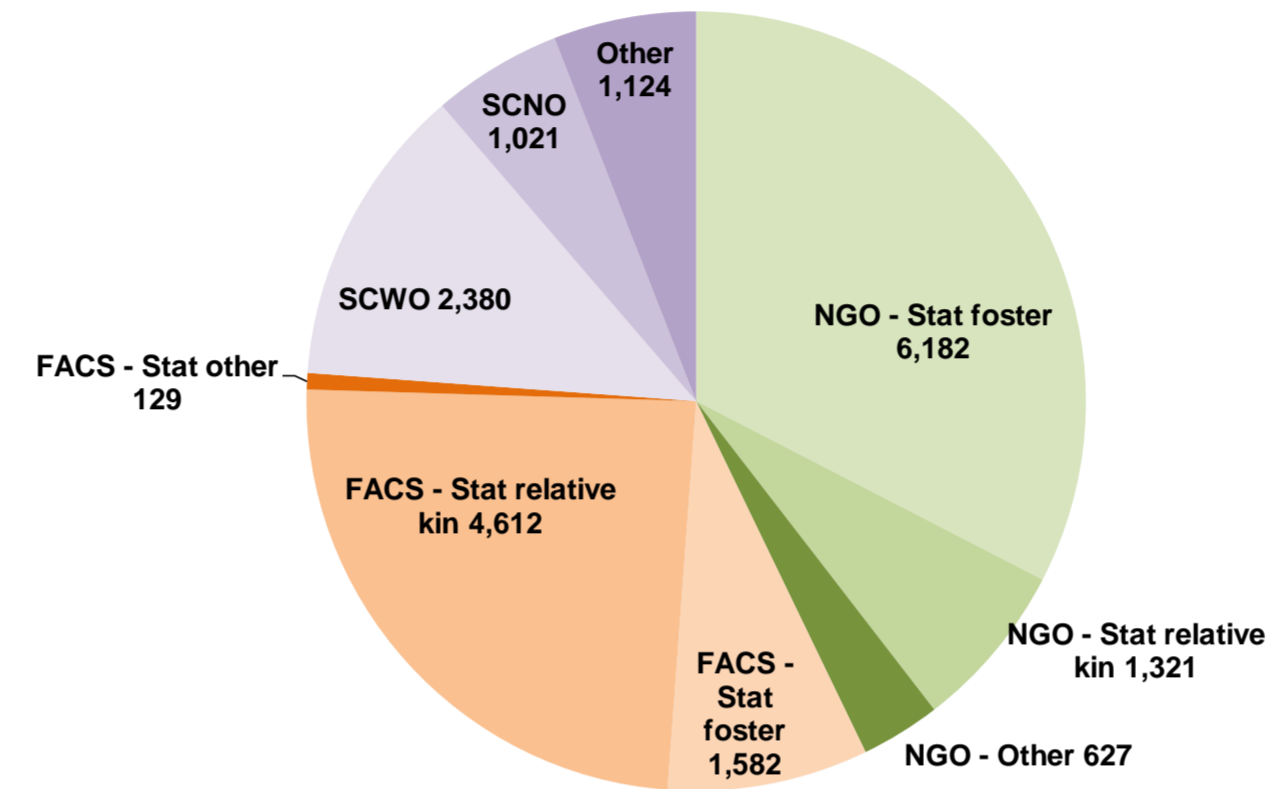
Total OOHC population as at February 2017

2,581

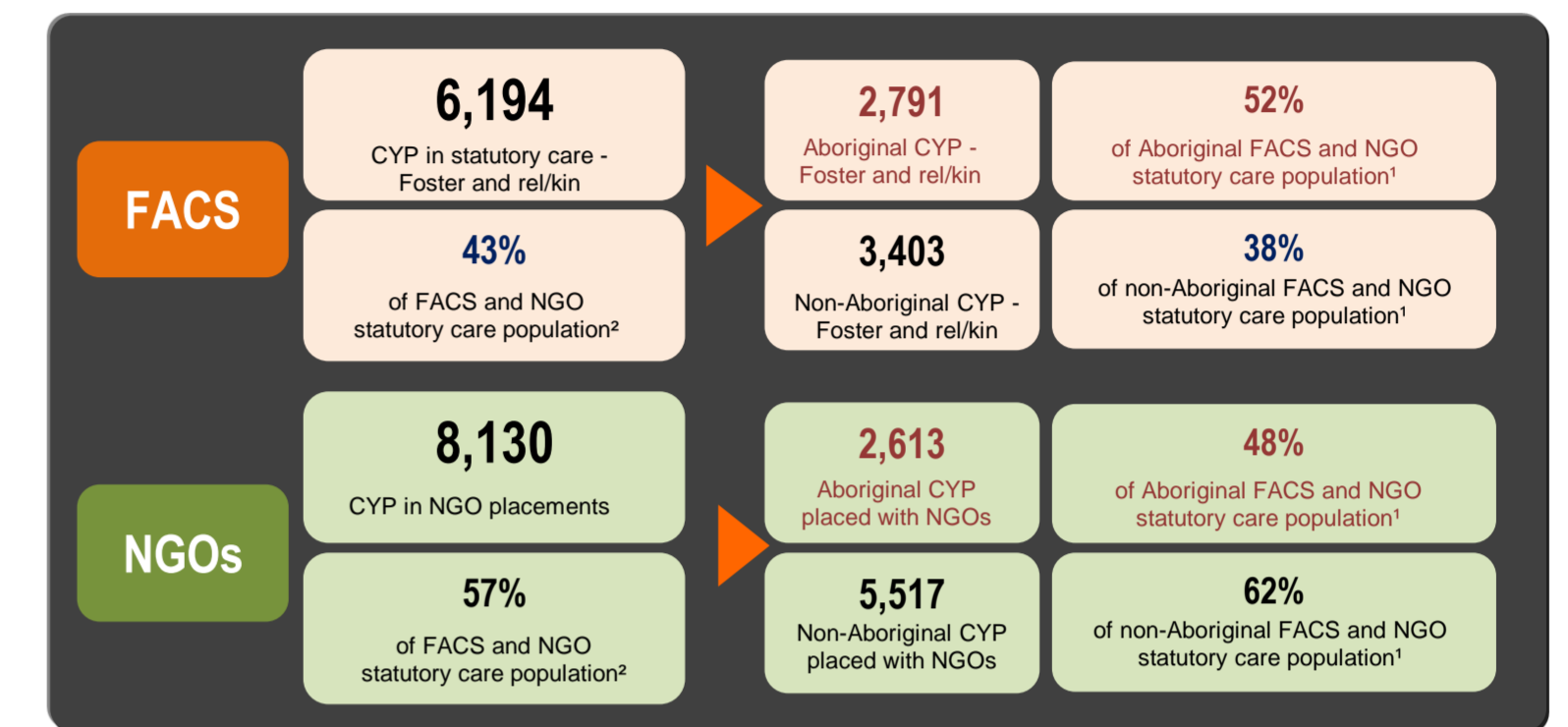
Guardianship orders as at February 2017

FACS and NGO statutory care population¹
as at February 2017

= 14,324



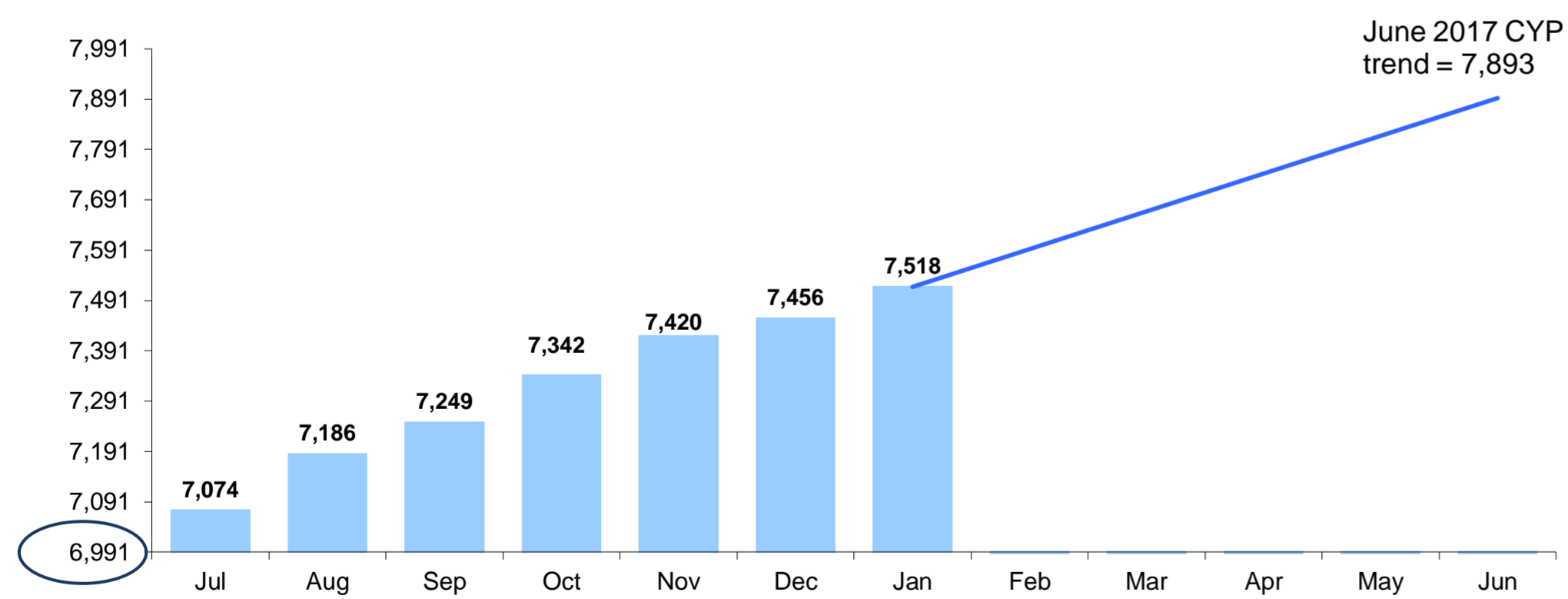
Total CYP in OOHC as at February 2017



1 and 2. Includes CYP in FACS - Stat foster, FACS - Stat relative kin, NGO - Stat foster, NGO relative kin and NGO - Other.

OOHC and Transition Dashboard 2016/17 - New South Wales January 2017

CYP transitioned by month - Cumulative from March 2012



18,928

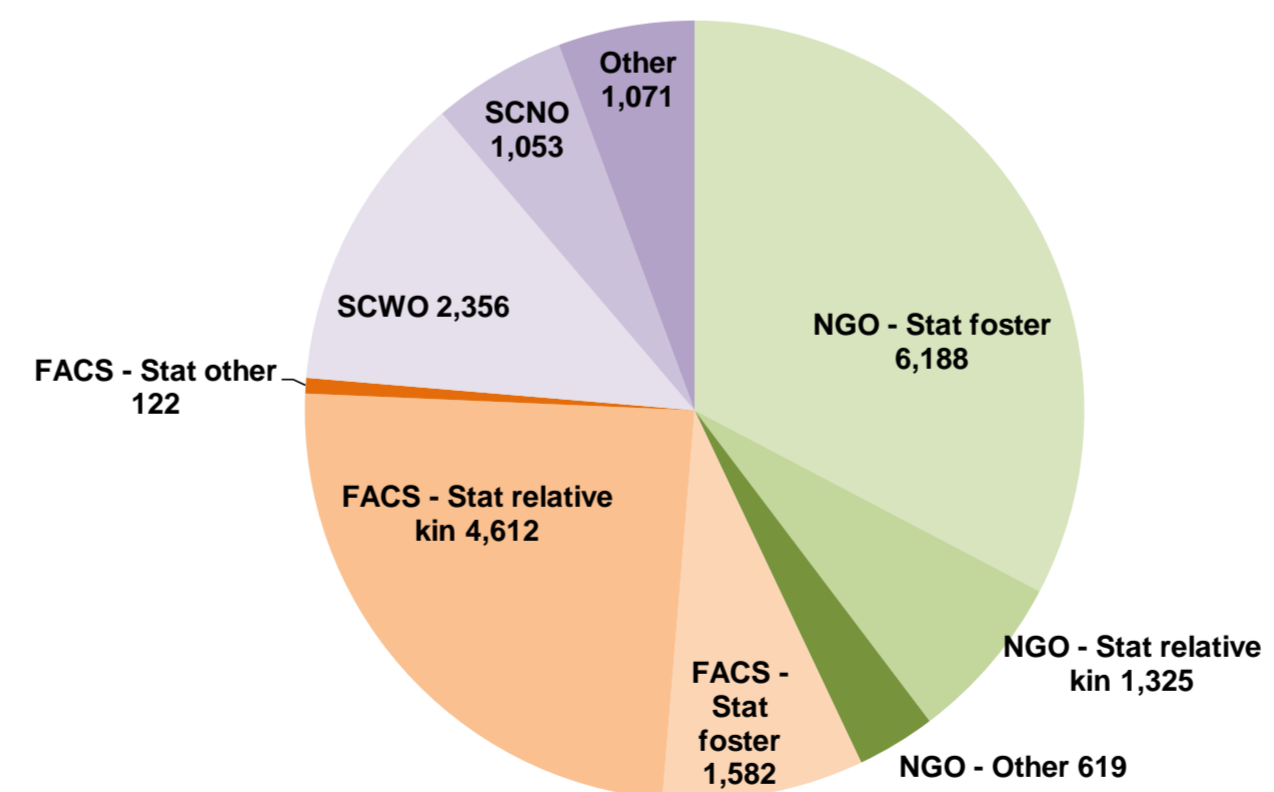
Total OOHC population as at January 2017

2,568

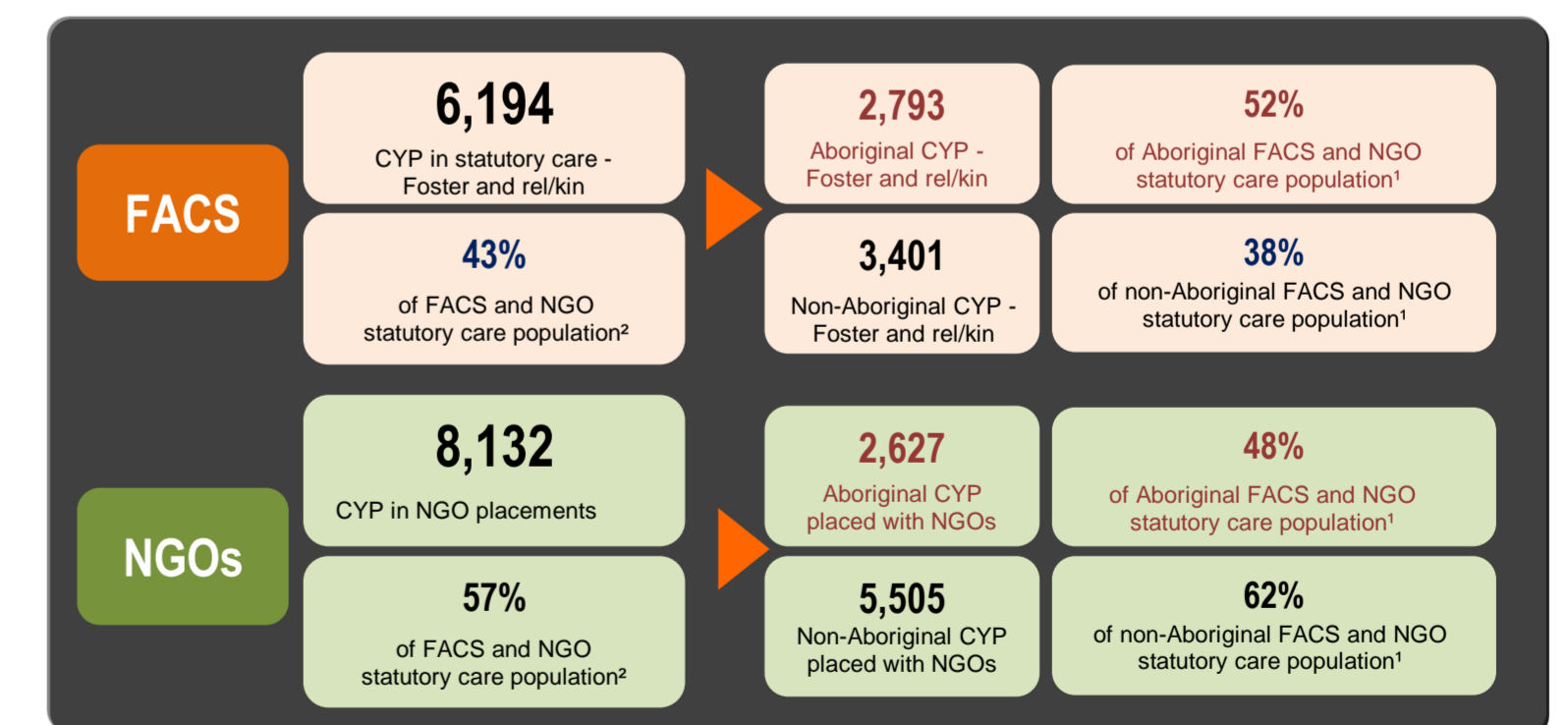
Guardianship orders as at January 2017

FACS and NGO statutory care population¹
as at January 2017

= 14,326



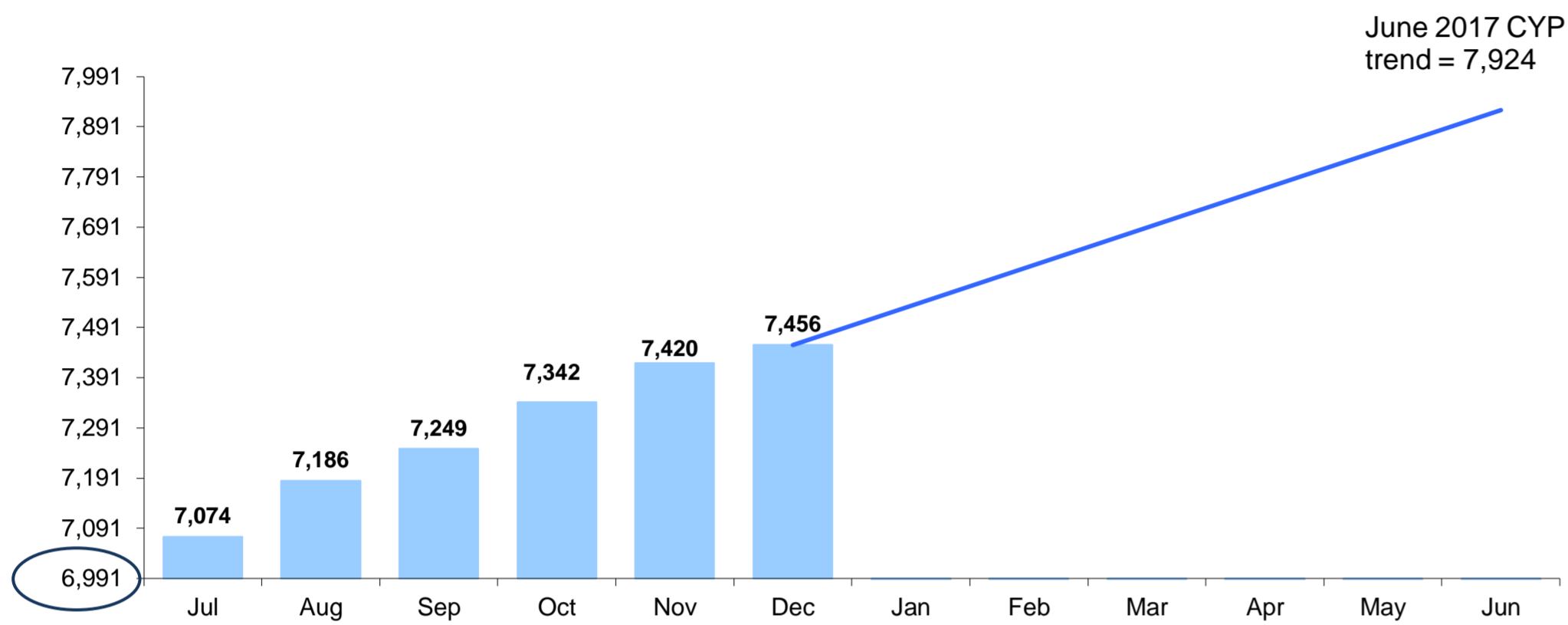
Total CYP in OOHC as at January 2017



1 and 2. Includes CYP in FACS - Stat foster, FACS - Stat relative kin, NGO - Stat foster, NGO relative kin and NGO - Other.

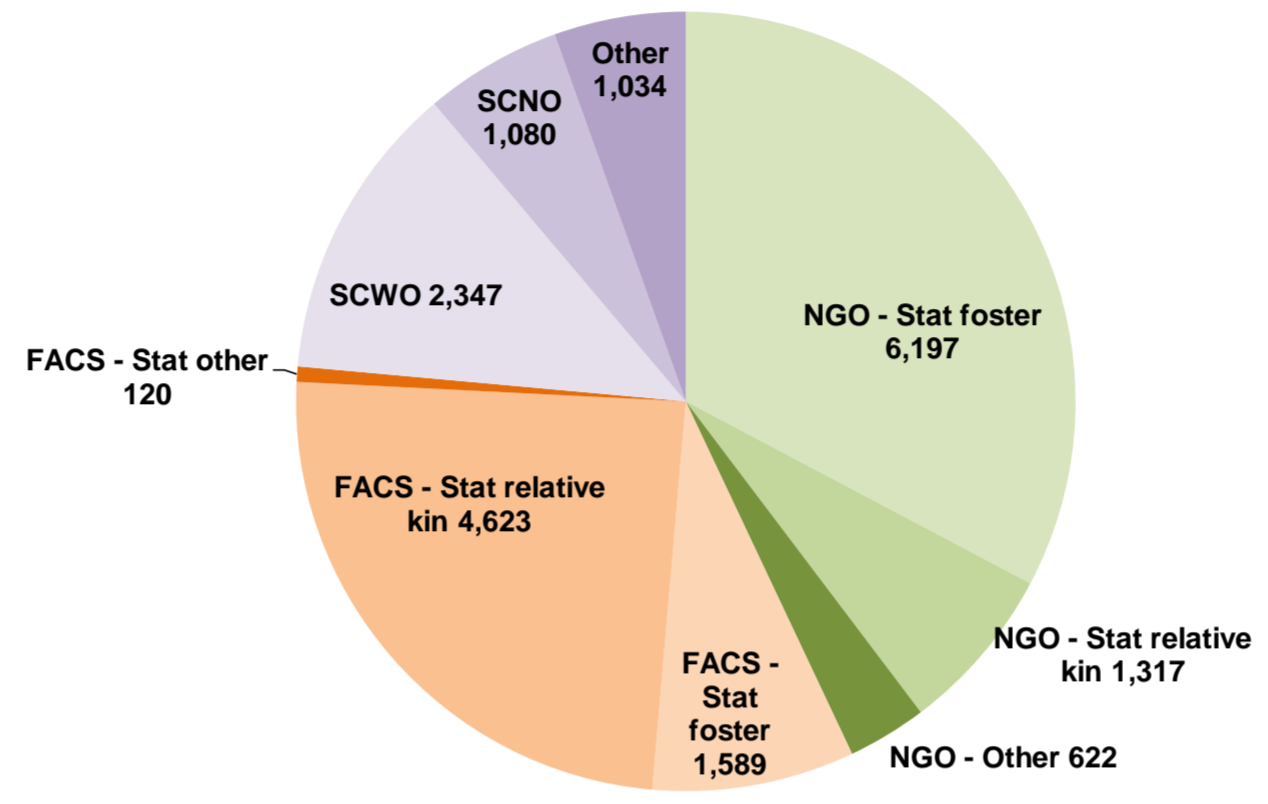
OOHC and Transition Dashboard 2016/17 - New South Wales December 2016

CYP transitioned by month - Cumulative from March 2012



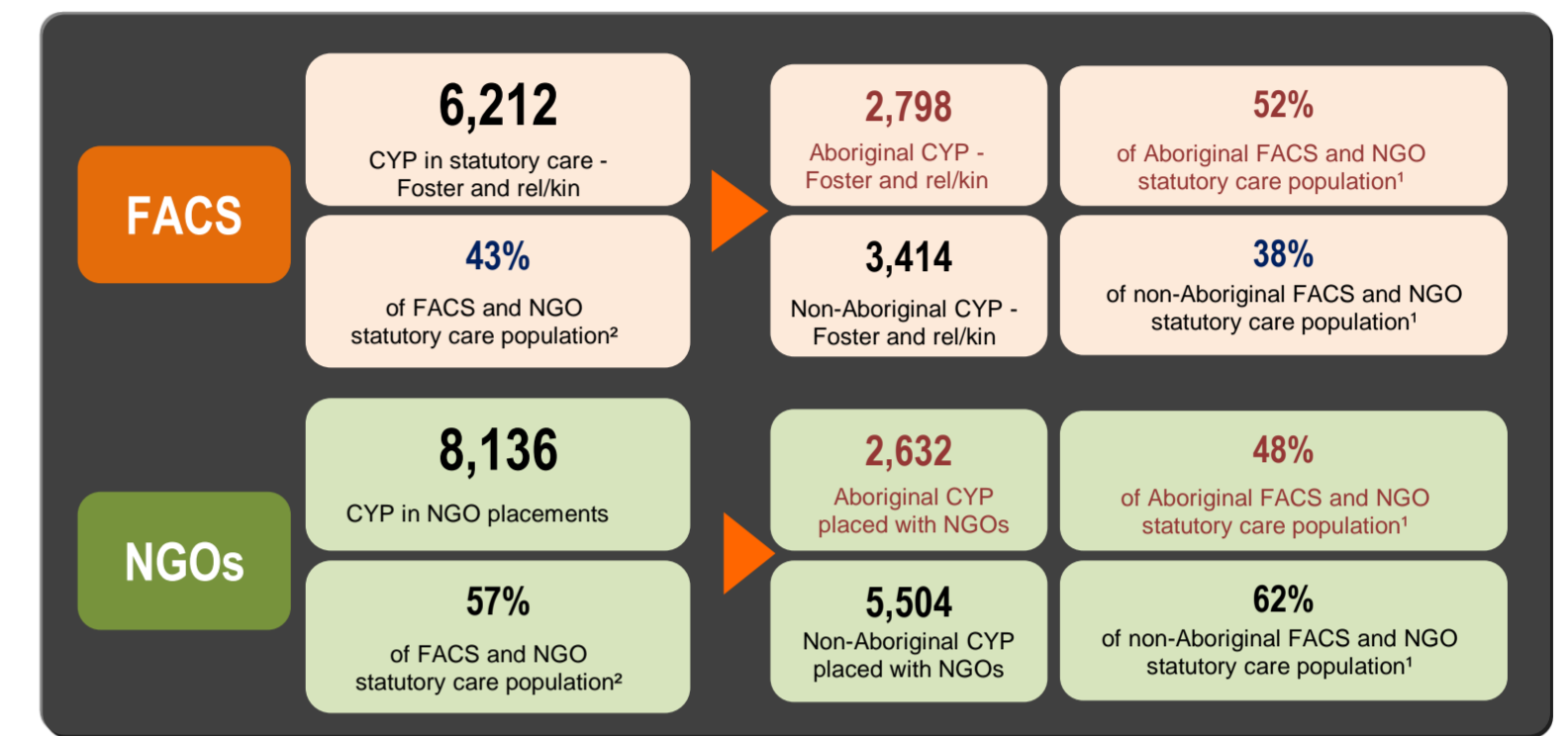
18,929
Total OOHC population as at December 2016

2,572
Guardianship orders as at December 2016



Total CYP in OOHC as at December 2016

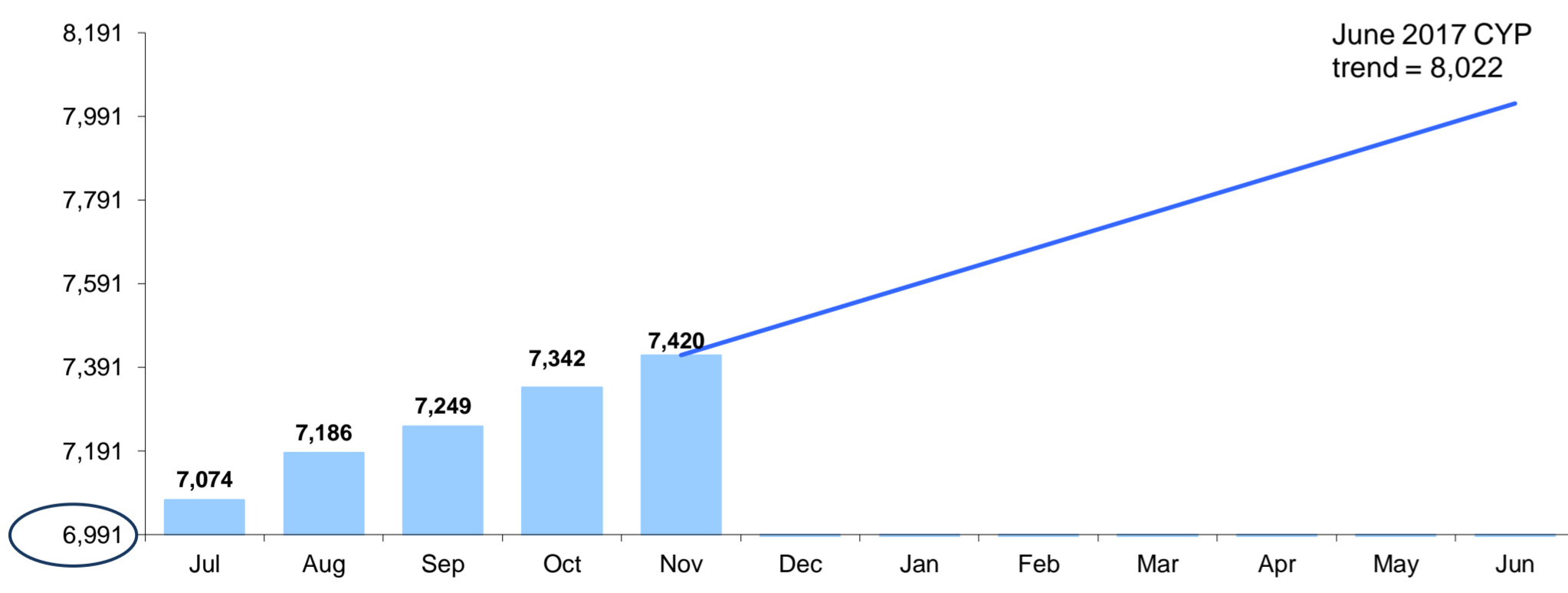
FACS and NGO statutory care population¹ as at December 2016 = 14,348



¹ and ². Includes CYP in FACS - Stat foster, FACS - Stat relative kin, NGO - Stat foster, NGO relative kin and NGO - Other.

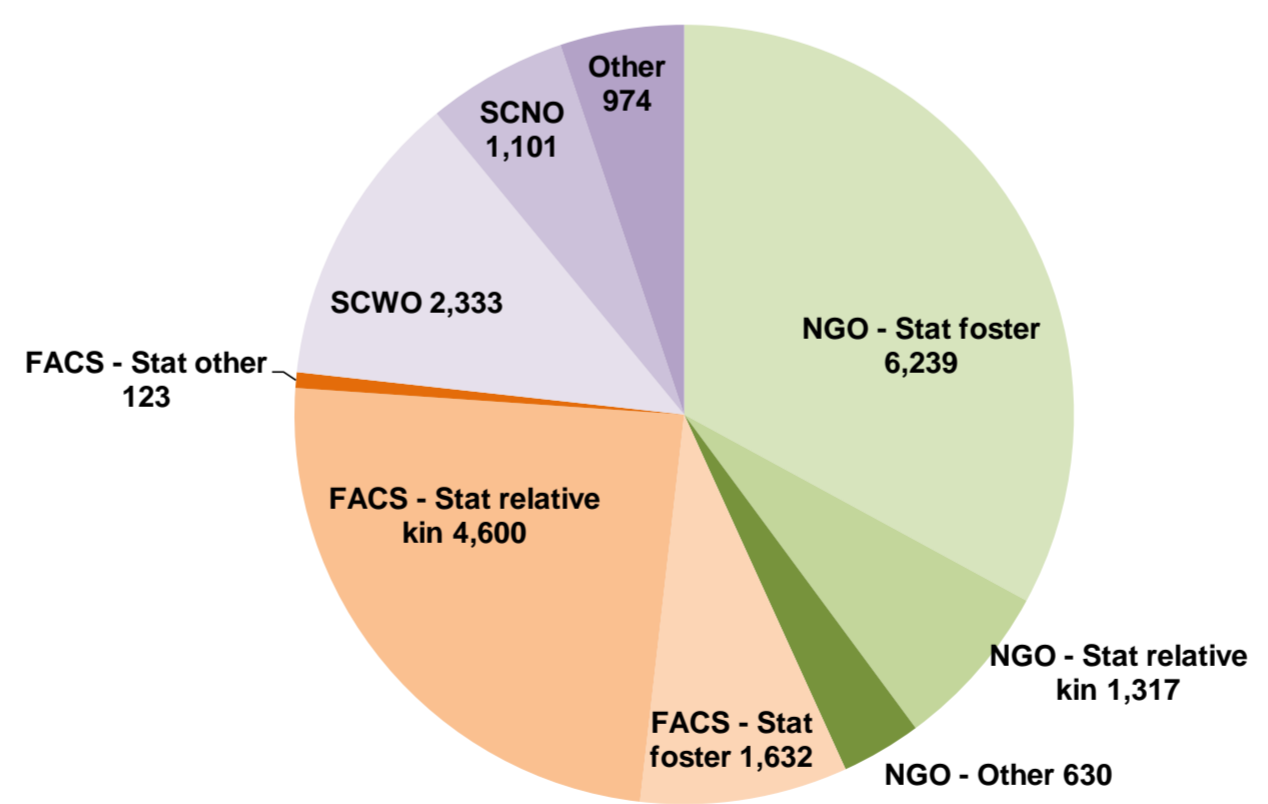
OOHC and Transition Dashboard 2016/17 - New South Wales November 2016

CYP transitioned by month - Cumulative from March 2012



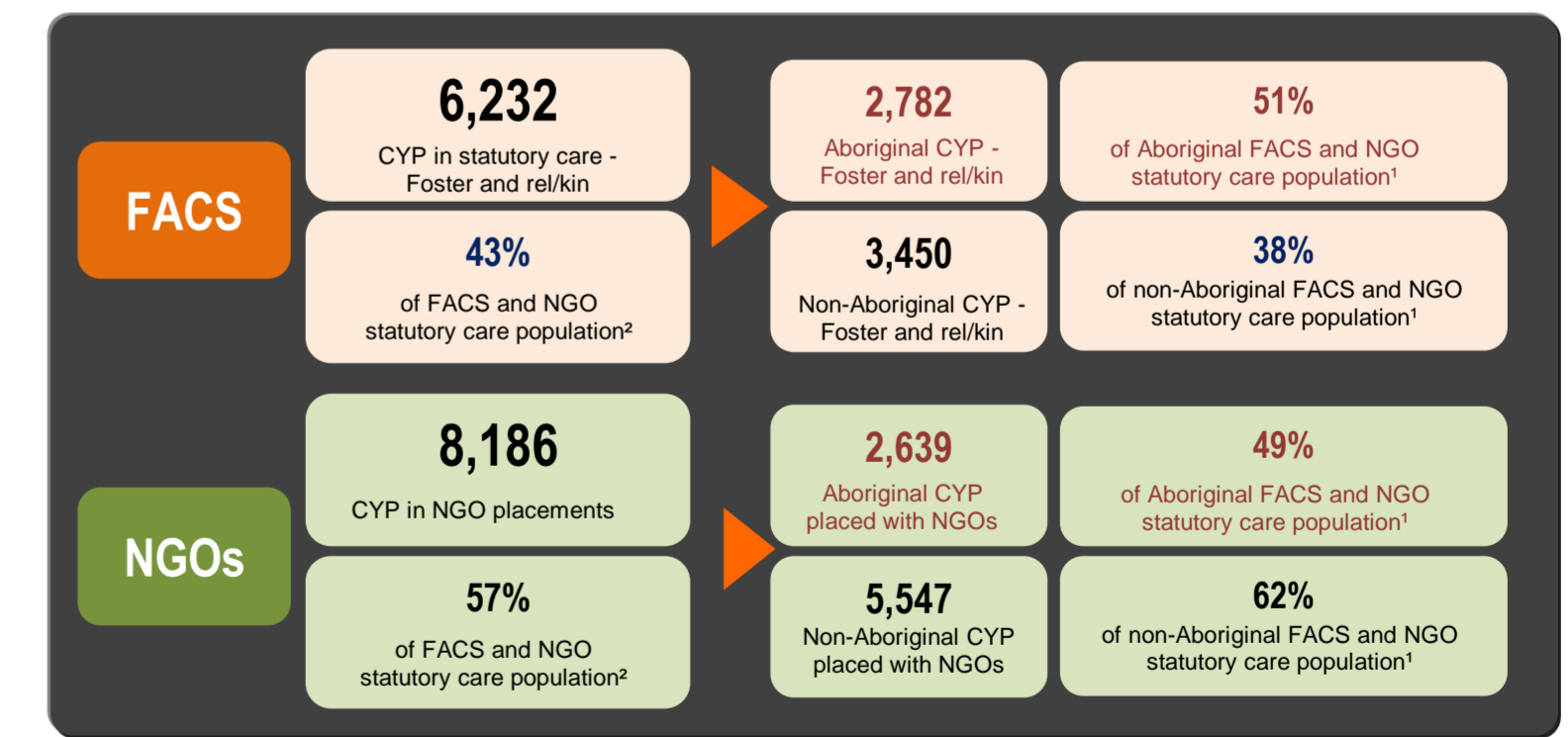
18,949
Total OOHC population as at November 2016

2,550
Guardianship orders as at November 2016



Total CYP in OOHC as at November 2016

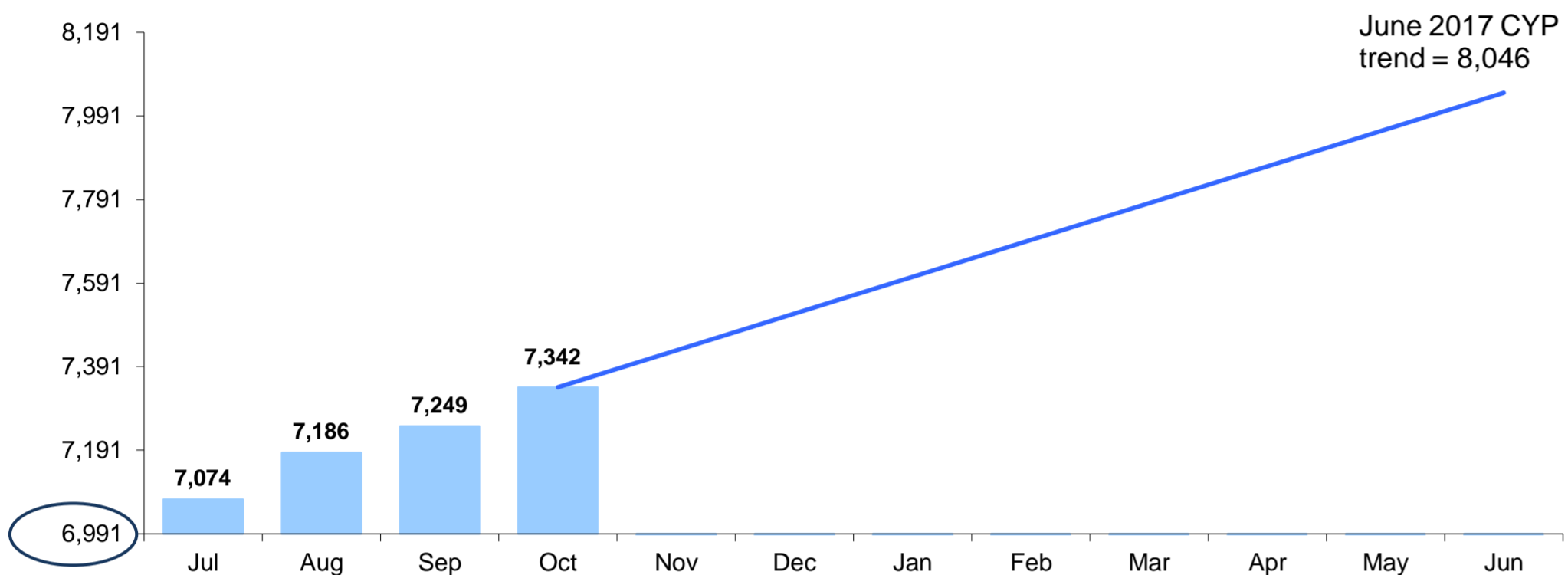
FACS and NGO statutory care population¹ as at November 2016 = 14,418



¹ and ². Includes CYP in FACS - Stat foster, FACS - Stat relative kin, NGO - Stat foster, NGO relative kin and NGO - Other.

OOHC and Transition Dashboard 2016/17 - New South Wales October 2016

CYP transitioned by month - Cumulative from March 2012

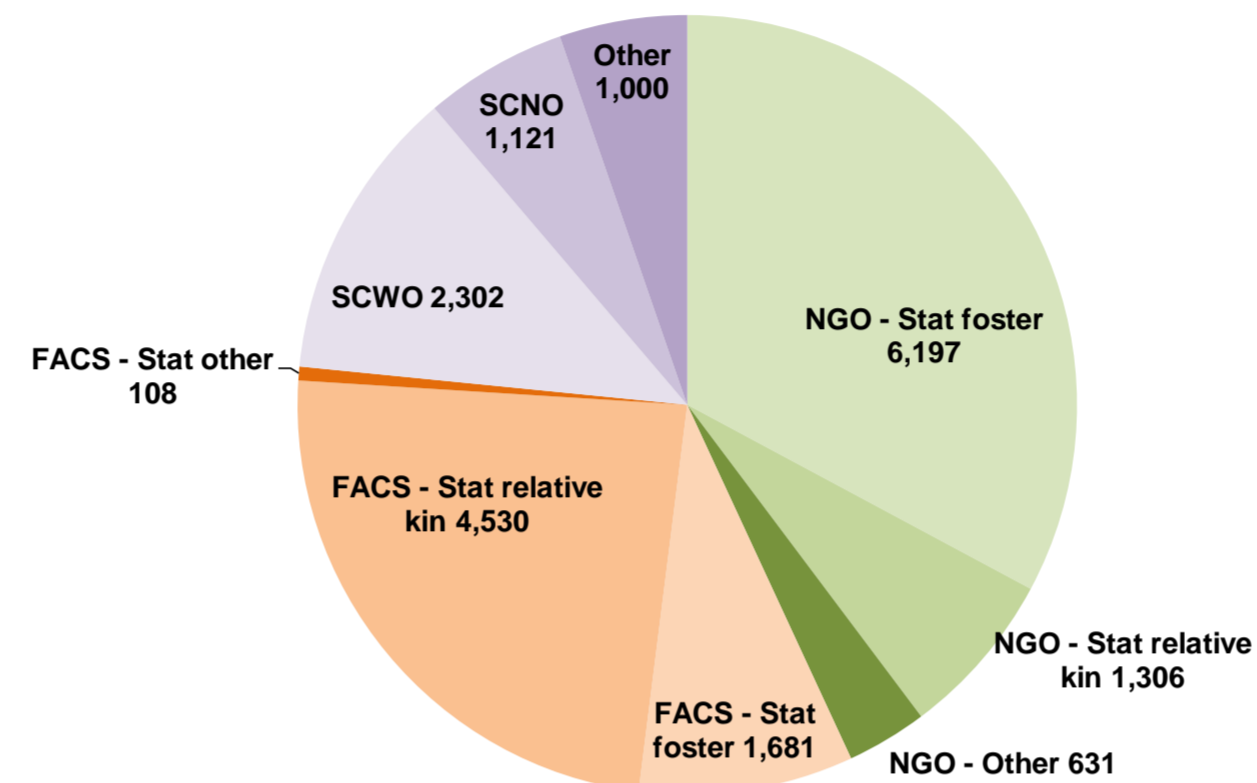


18,876

Total OOHC population as at October 2016

2,534

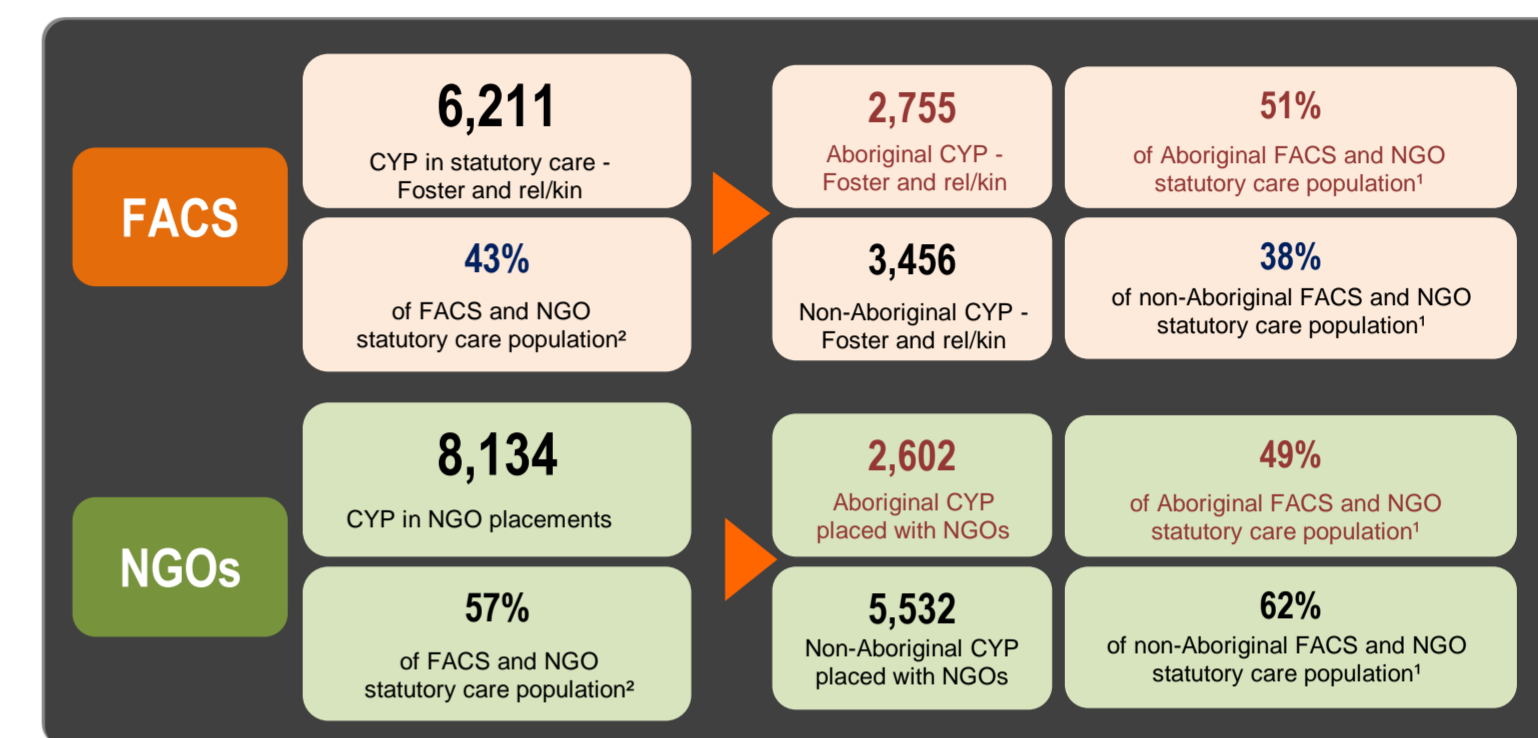
Guardianship orders as at October 2016



Total CYP in OOHC as at October 2016

FACS and NGO statutory care population¹
as at October 2016

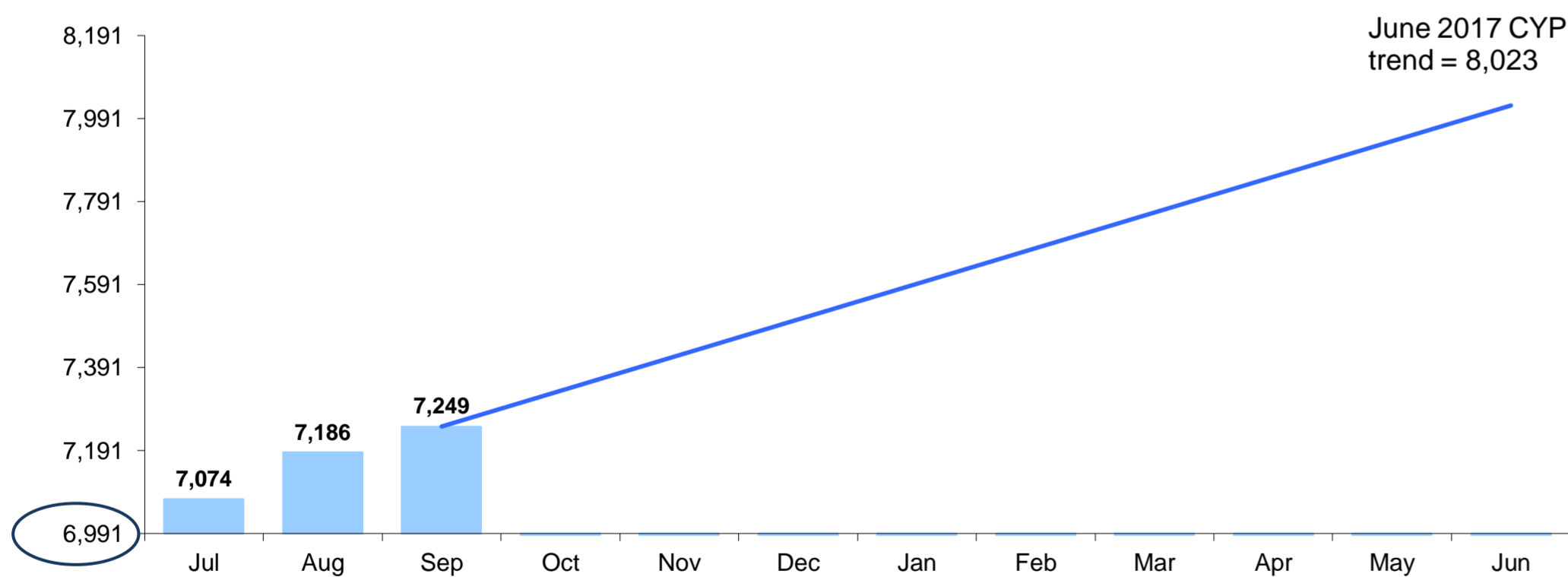
= 14,345



¹ and ². Includes CYP in FACS - Stat foster, FACS - Stat relative kin, NGO - Stat foster, NGO relative kin and NGO - Other.

OOHC and Transition Dashboard 2016/17 - New South Wales September 2016

CYP transitioned by month - Cumulative from March 2012

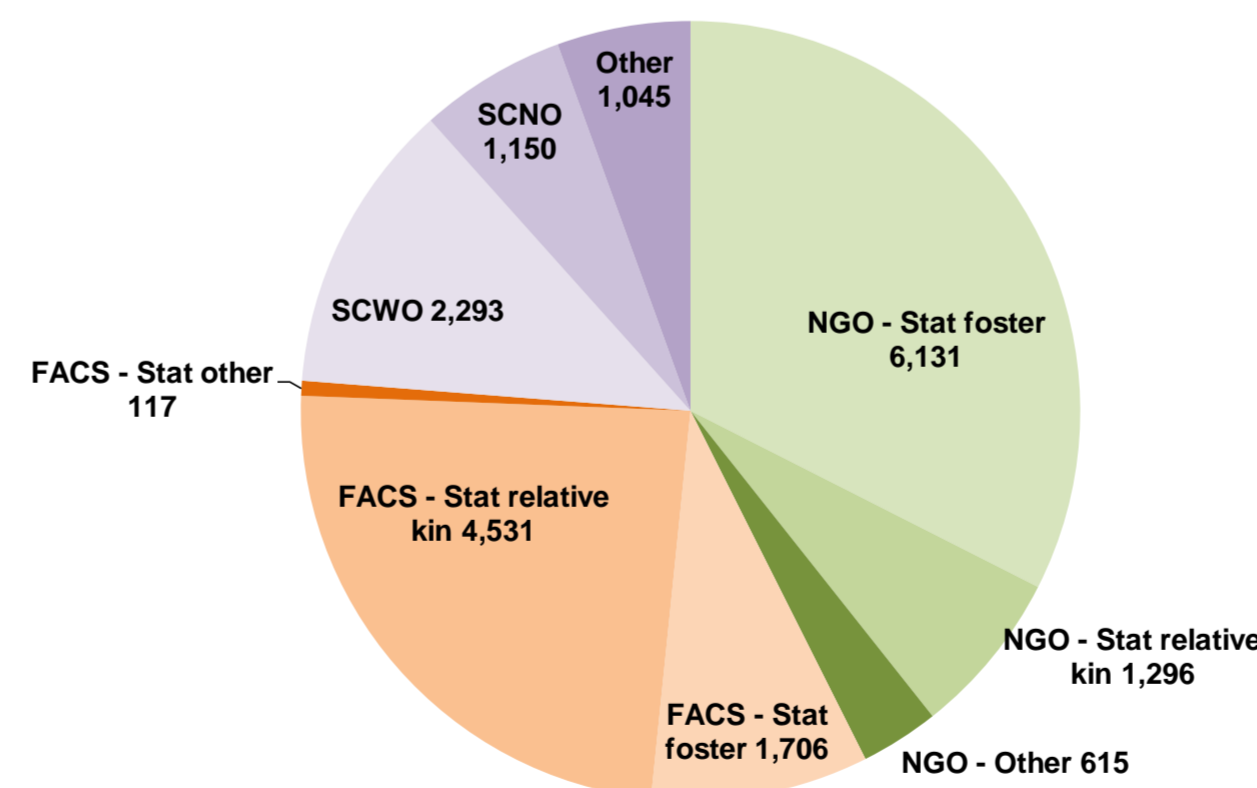


18,884

Total OOHC population as at September 2016

2,517

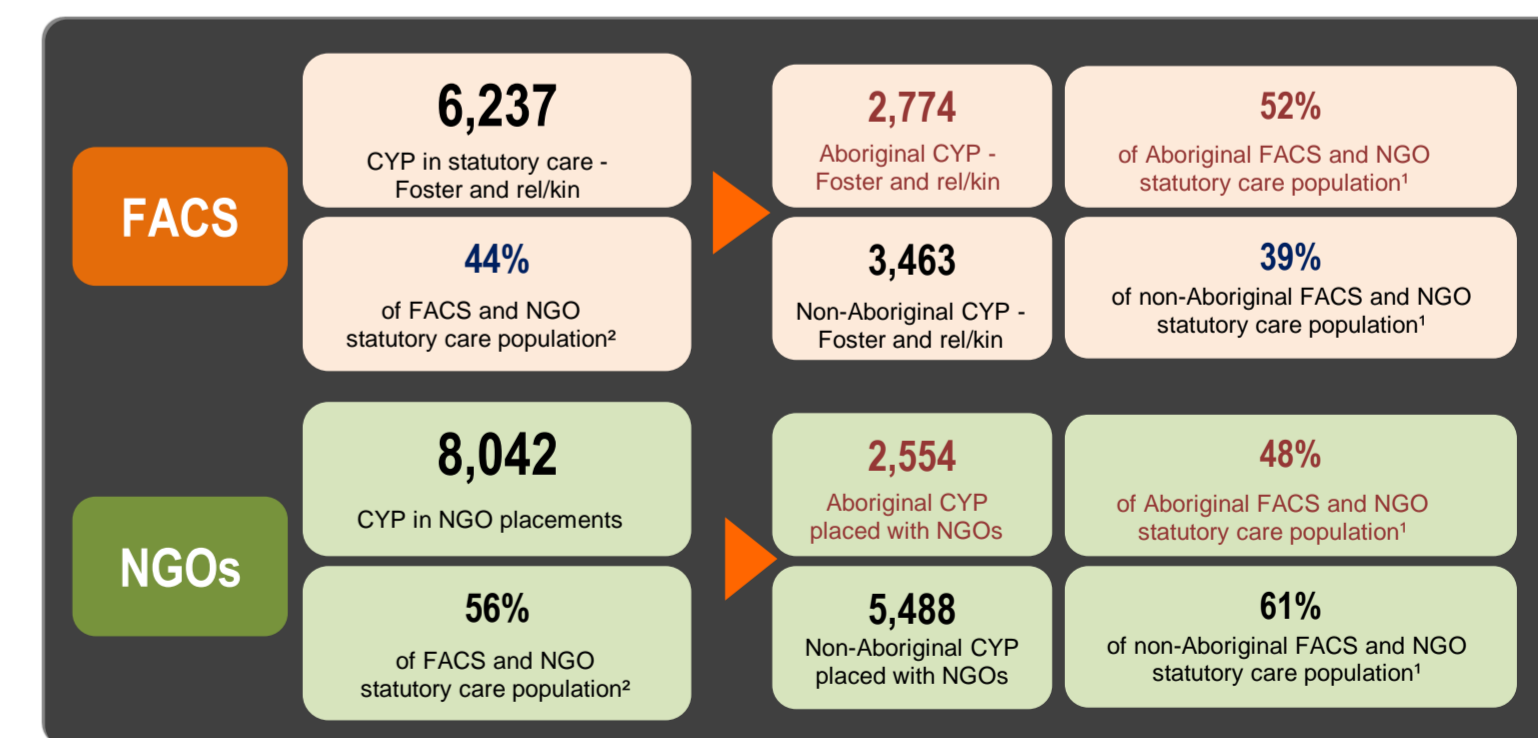
Guardianship orders as at September 2016



Total CYP in OOHC as at September 2016

FACS and NGO statutory care population¹
as at September 2016

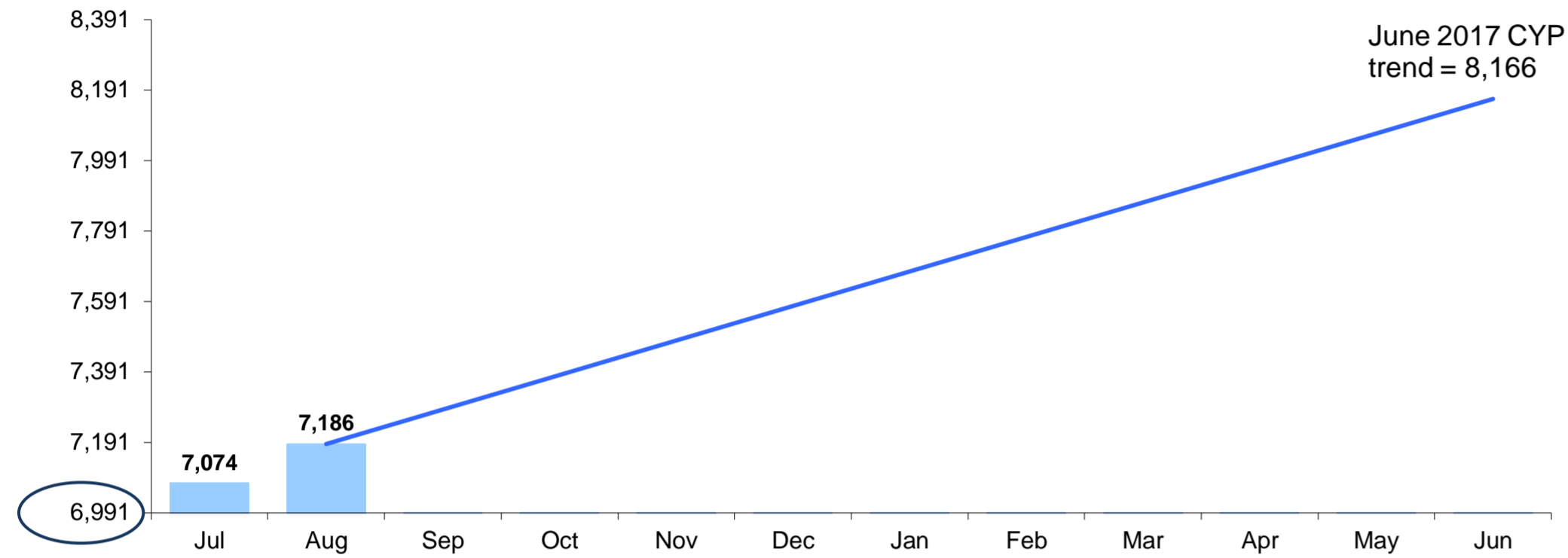
= 14,279



¹ and ². Includes CYP in FACS - Stat foster, FACS - Stat relative kin, NGO - Stat foster, NGO relative kin and NGO - Other.

OOHC and Transition Dashboard 2016/17 - New South Wales August 2016

CYP transitioned by month - Cumulative from March 2012

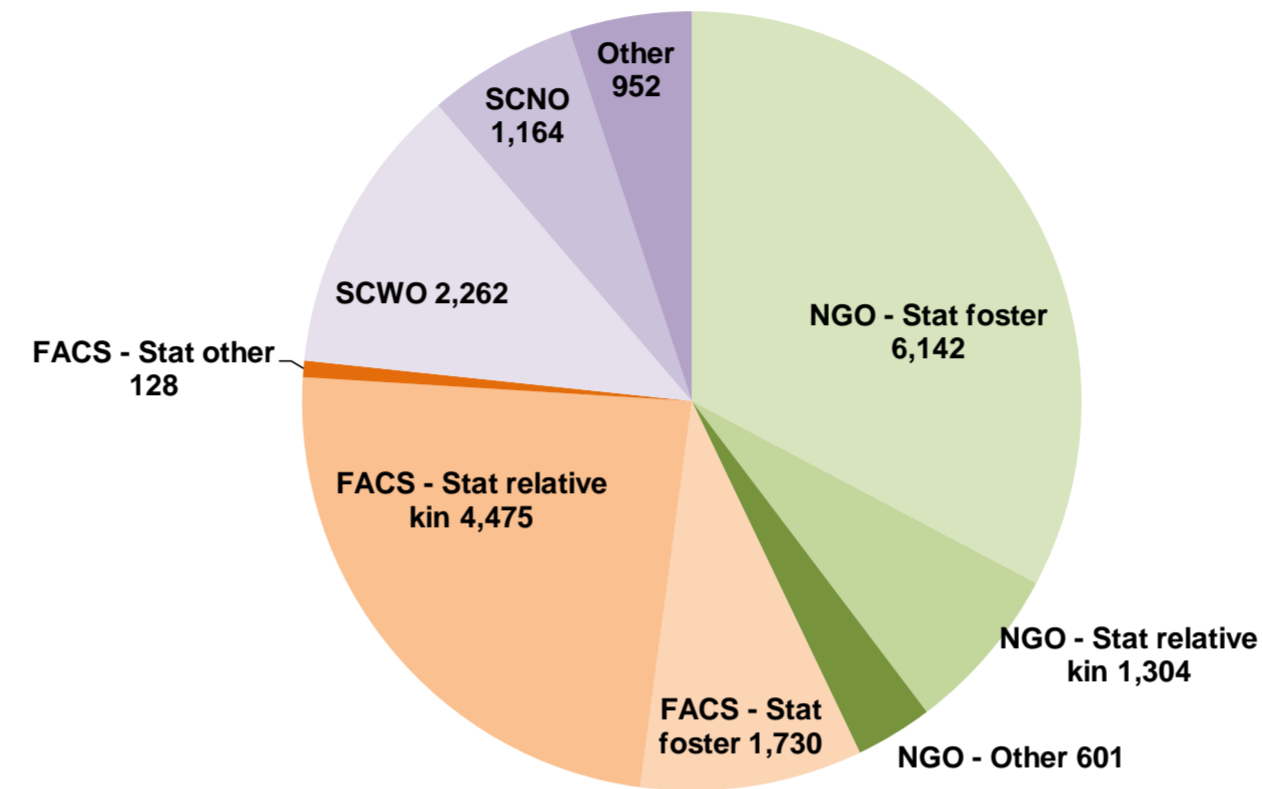


18,758

Total OOHC population as at August 2016

2,502

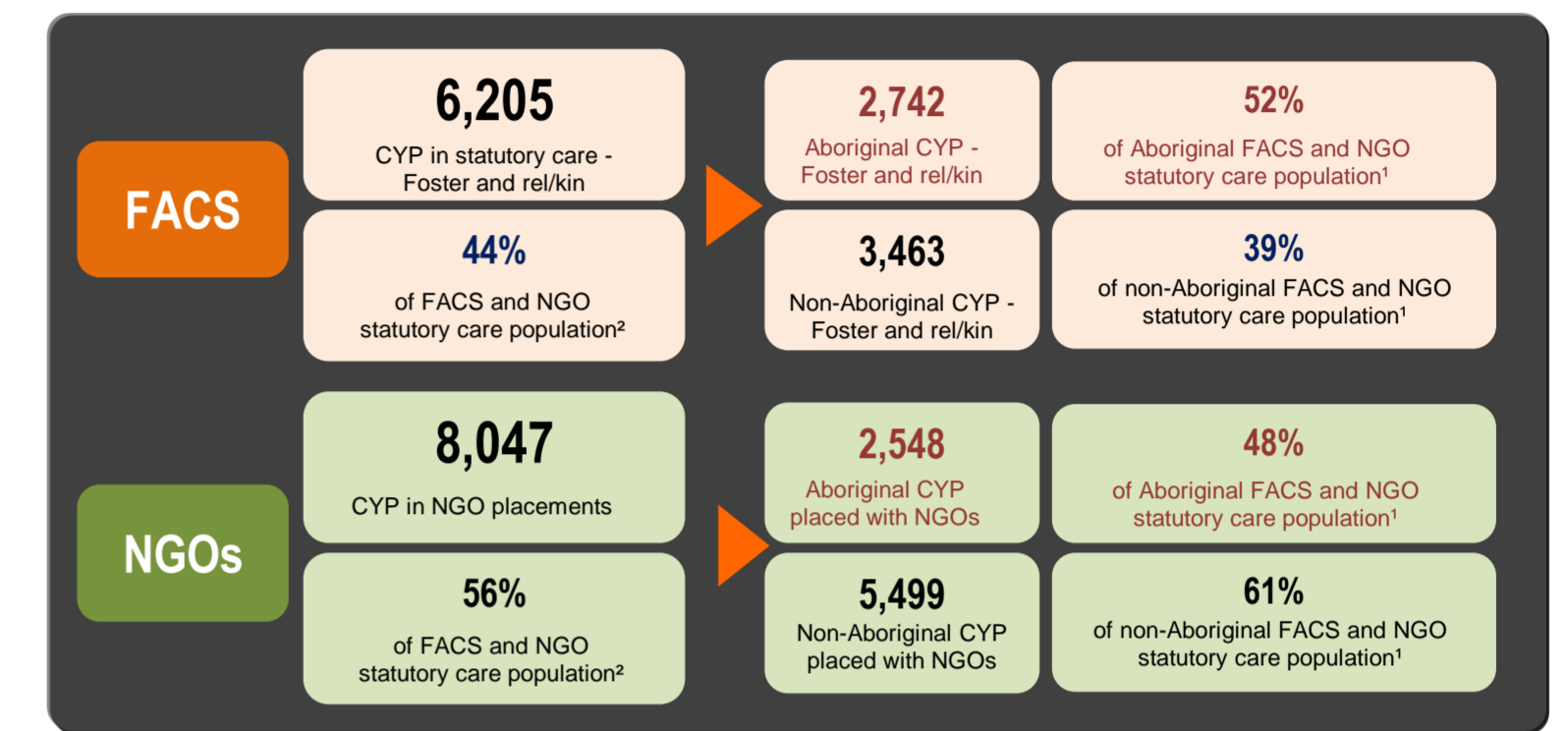
Guardianship orders as at August 2016



Total CYP in OOHC as at August 2016

FACS and NGO statutory care population¹ as at August 2016

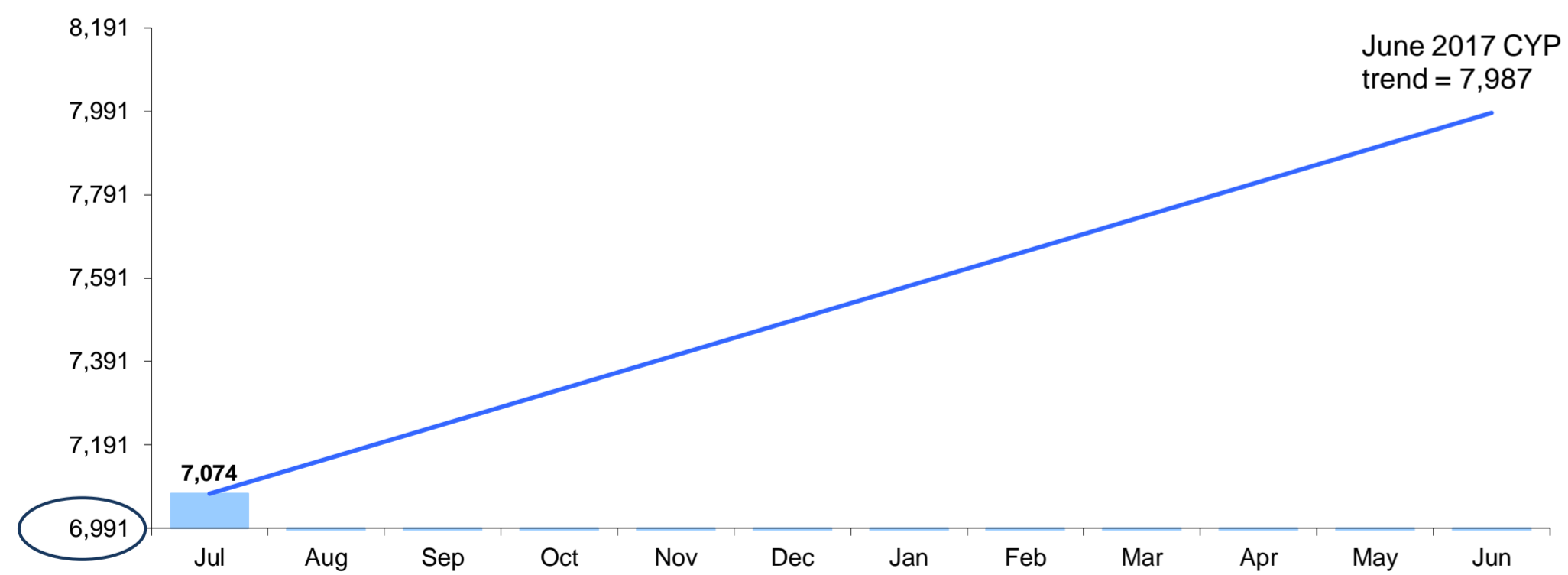
= 14,252



1 and 2. Includes CYP in FACS - Stat foster, FACS - Stat relative kin, NGO - Stat foster, NGO relative kin and NGO - Other.

OOHC and Transition Dashboard 2016/17 - New South Wales July 2016

CYP transitioned by month - Cumulative from March 2012

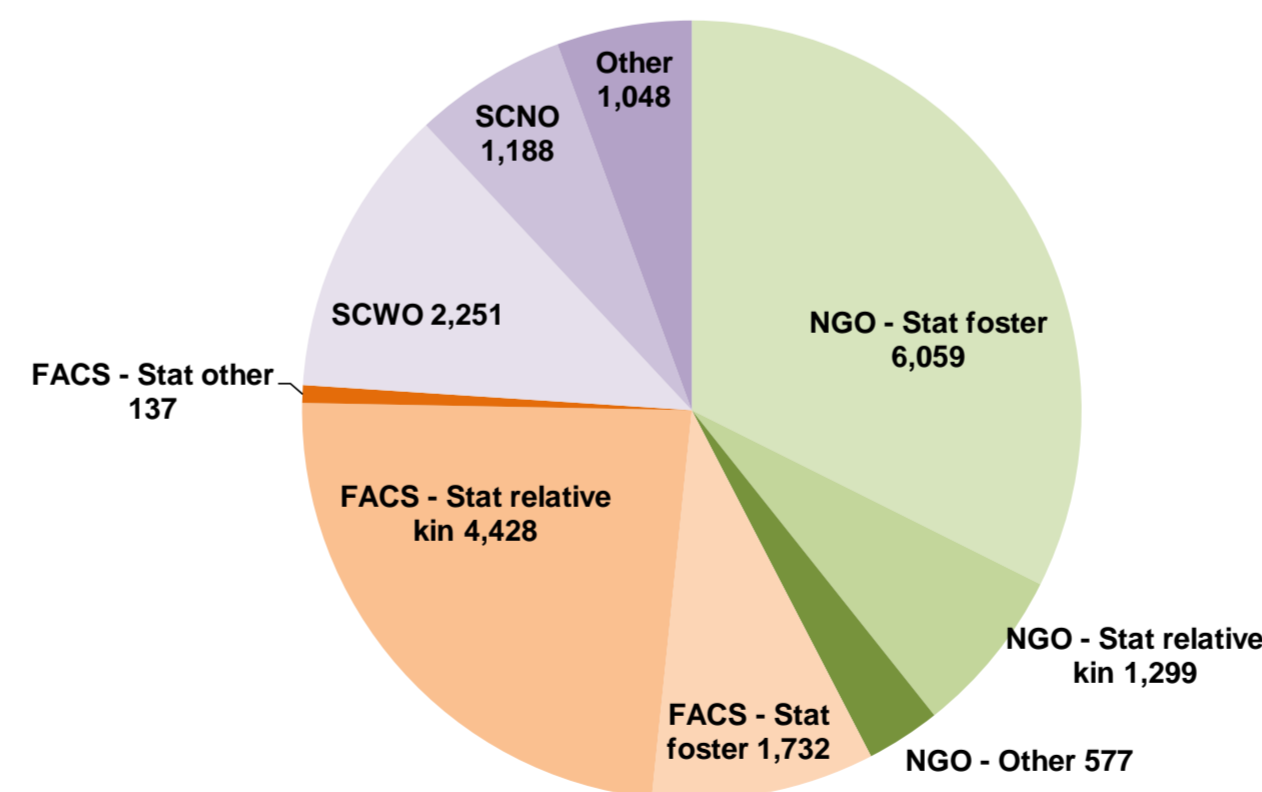


18,719

Total OOHC population as at July 2016

2,499

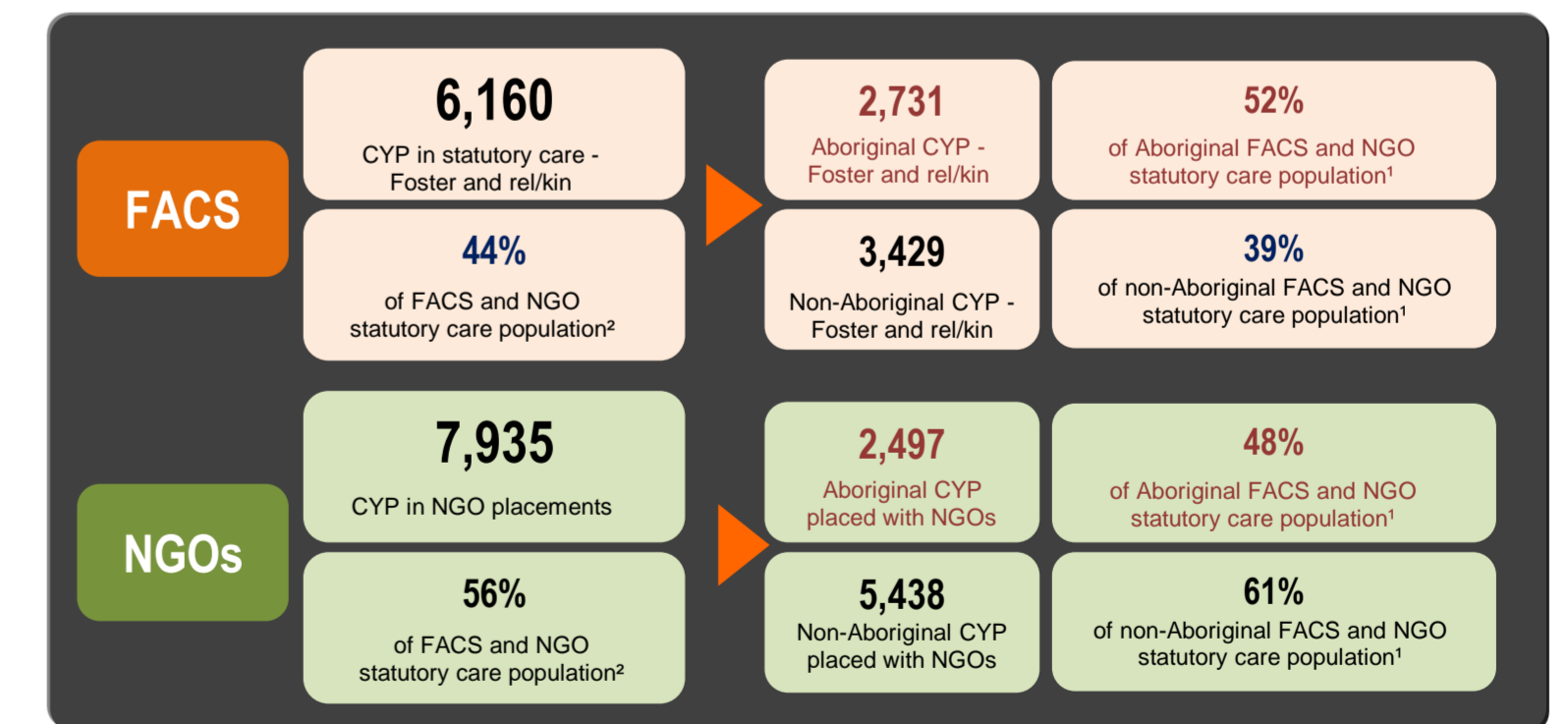
Guardianship orders as at July 2016



Total CYP in OOHC as at July 2016

FACS and NGO statutory care population¹ as at July 2016

= 14,095



1 and 2. Includes CYP in FACS - Stat foster, FACS - Stat relative kin, NGO - Stat foster, NGO relative kin and NGO - Other.