

WHAT YOU NEED TO KNOW...



ABOUT HOW WE'RE BUILDING PERMANENCY AND EARLY INTERVENTION INTO CASEWORK

Under the new Permanency Support Program, case plans will be focused on working with families and kin to keep children at home, restore them, or find a stable and secure option through guardianship or open adoption.

The way forward

The NSW Government is:

CREATING 50 NEW PERMANENCY COORDINATORS



TO SUPPORT CASEWORKERS ACHIEVE PERMANENCY GOALS WITHIN TWO YEARS

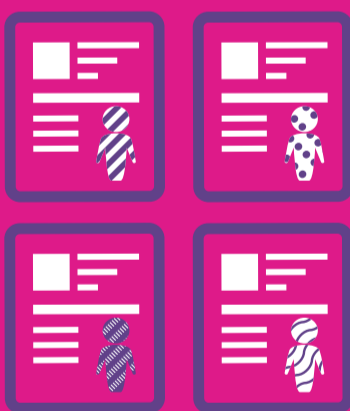
CHANGING THE WAY WE FUND

OUR SERVICE PROVIDERS TO INCENTIVISE THEM TO FIND PERMANENT HOMES WITHIN



WORKING IN PARTNERSHIP WITH ABSEC TO DEVELOP AN **ABORIGINAL GUARDIANSHIP SUPPORT MODEL** TO BETTER SUPPORT ABORIGINAL CHILDREN AND YOUNG PEOPLE IN GUARDIANSHIP ARRANGEMENTS

INCREASING **FLEXIBILITY** WITH CHILD-CENTRED FUNDING AND TARGETED SUPPORT PACKAGES THAT SUIT A CHILD OR YOUNG PERSON'S INDIVIDUAL NEEDS



PROMOTING **MORE GUARDIANSHIP ORDERS** SO THAT CHILDREN WHO CANNOT LIVE WITH MUM OR DAD CAN LIVE WITH FAMILY MEMBERS



2,486
in 2016

4,000
2020 PROJECTED

NUMBER OF CHILDREN AND YOUNG PEOPLE ON GUARDIANSHIP ORDERS



INVESTING **\$24 MILLION**

TO IMPROVE THE ADOPTION PROCESS

