

We acknowledge Aboriginal people as the First Nations Peoples of NSW and pay our respects to Elders past, present, and future.

We acknowledge the ongoing connection Aboriginal people have to this land and recognise Aboriginal people as the original custodians of this land.





DCJ Research Strategy 2020-2022

Human Services Dataset & Pathways of Care Longitudinal Study Dataset

Dr Jessica Stewart and Merran Butler

Family and Community Services Insights Analysis and Research (FACSIAR)
Department of Communities and Justice

14 July 2021

The NSW Department of Communities and Justice

The Department brings together Family and Community Services and Justice services.

DCJ's purpose is **to help create a safe, just, resilient and inclusive NSW in which everyone has the opportunity to realise their potential.**



Who we are



DCJ is accountable for seven of the NSW Government's State Outcomes and five of the Premier's Priorities



Safer communities

Working across government with key law enforcement agencies to prevent crime, maintain social order and promote community security and safety.



Effective and efficient Legal System

Supporting the resolution of criminal and civil matters through legal services, the administration of courts and tribunals, and client services to victims and vulnerable people.



Reduce reoffending

Supporting and managing adult and juvenile offenders in correctional centres, and in the community. This supports the Premier's Priority of: **Reducing recidivism in the prison population.**



Prepared for disasters and emergencies

Coordinating DCJ's emergency management response to enhance recovery efforts and build community resilience.



Active and inclusive communities

Provide a range of community support to improve wellbeing, increase community participation, and promote social inclusion and cohesion.



Children and families thrive

Supporting the safety and wellbeing of vulnerable children, young people and families. This supports the Premier's Priorities of: **Protecting our most vulnerable children; Increasing permanency for children in out-of-home-care; Reducing domestic violence reoffending.**



People have a safe & affordable place to live

Providing assistance for people unable to access or maintain appropriate housing, including homelessness services. This supports the Premier's Priority of: **Reducing homelessness.**

NSW Premier's Priorities



Protecting our most vulnerable children

Decrease the proportion of children and young people re-reported at risk of significant harm by 20% by 2023.



Increasing permanency for children in OOHC

Double the number of children in safe and permanent homes by 2023 for children in, or at risk of entering, out-of-home care.



Reducing domestic violence reoffending

Reduce the number of domestic violence reoffenders by 25% by 2023.



Reducing recidivism in the prison population

Reduce adult reoffending following release from prison by 5% by 2023.



Reducing homelessness

Reduce street homelessness across NSW by 50% by 2025.

Closing The Gap Targets and Outcomes

Closing the gap targets for NSW that DCJ leads or supports:

- By 2031, reduce the rate of Aboriginal and Torres Strait Islander adults held in incarceration by at least 15 per cent
- By 2031, reduce the rate of Aboriginal and Torres Strait Islander young people (10-17 years) in detention by at least 15 per cent
- By 2031, reduce the rate of over-representation of Aboriginal and Torres Strait Islander children in out-of-home care by 45 per cent
- A significant and sustained reduction in violence and abuse against Aboriginal and Torres Strait Islander women and children towards zero
- Significant and sustained reduction in suicide of Aboriginal and Torres Strait Islander people towards zero



DCJ Research Strategy (2020-2022)

Communities and Justice Research Priorities



Understanding Clients & Communities



Understand the needs and experiences of all clients and communities to inform service delivery and program development



System quality & effectiveness



Investigate how to improve system quality, effectiveness and processes



Identify what works for communities



Test the effectiveness of programs and understand what components and practices work to support stronger and safer communities



Aboriginal-led Research



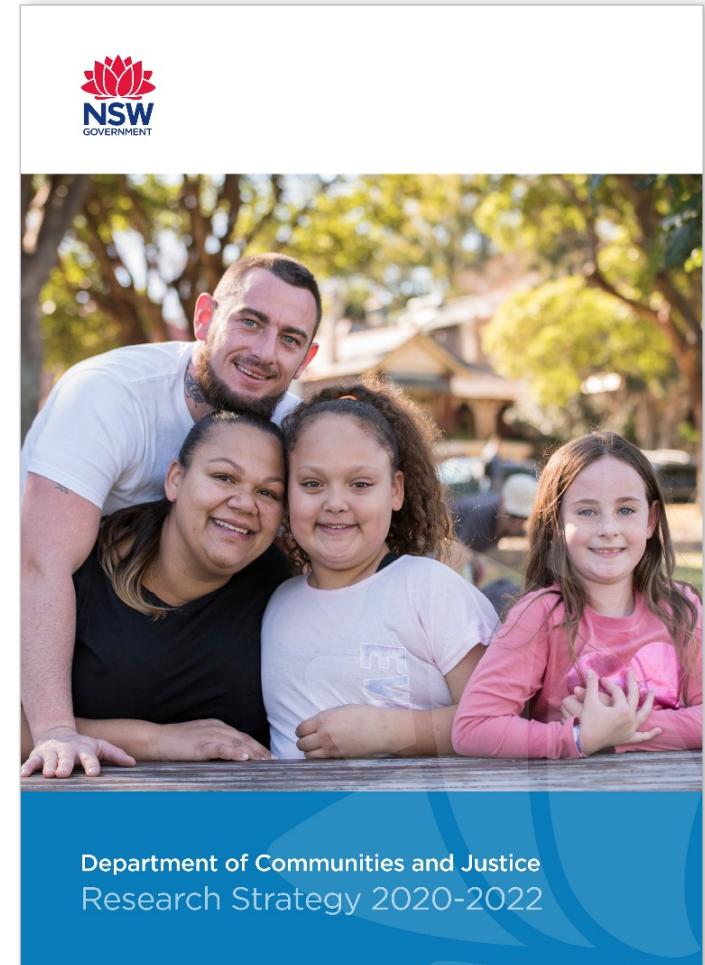
Support Aboriginal-led research and the principles of Indigenous Data Sovereignty



Economic Benefits



Quantify the economic benefits of achieving Community and Justice outcomes



Communities and Justice Research Activities



Undertake Internal Research

DCJ staff undertake research that informs evidence-based policy and practice



Commission External Research

Research is funded to close evidence gaps



Support Collaborative Research

Researchers and DCJ collaborate on developing new knowledge

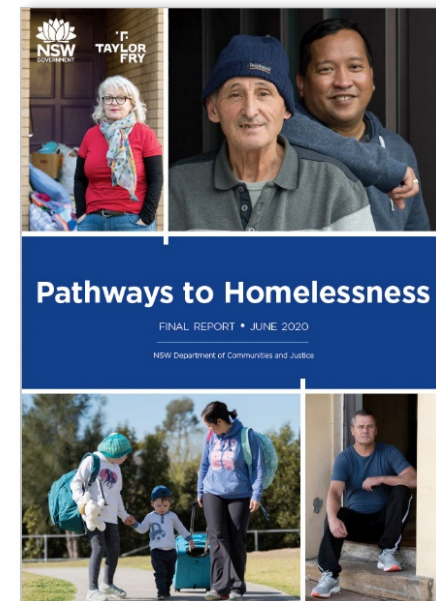
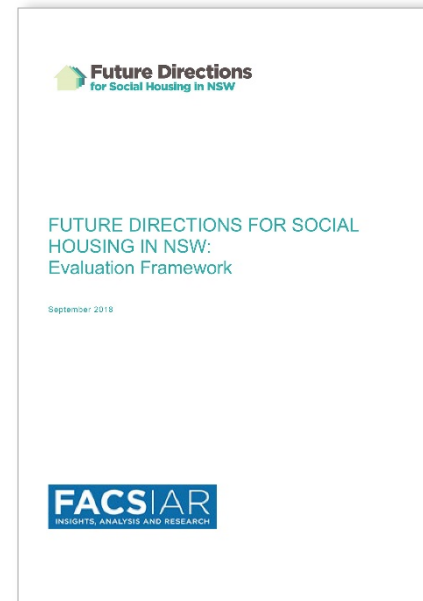
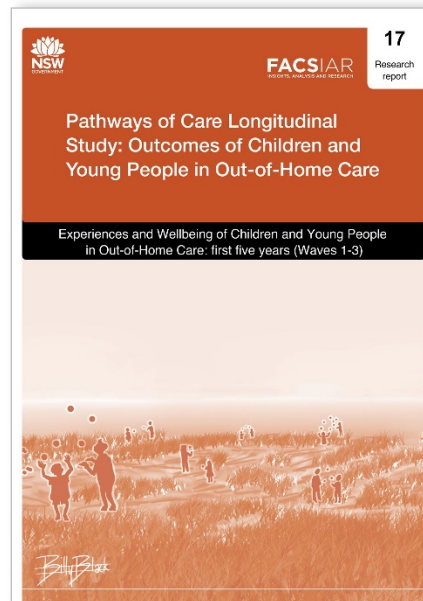
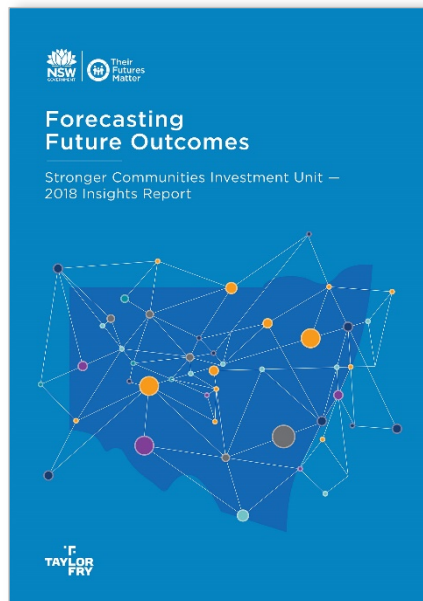


Translate & Communicate Research

Research findings are translated to inform policy development, practice innovation and service delivery

DCJ Linked Data Assets

- The NSW Human Services Dataset
- The Pathways of Care Longitudinal Study of Children in Out of Home Care
- Social Housing linked data asset
- Pathways to Homelessness Linked Data Set

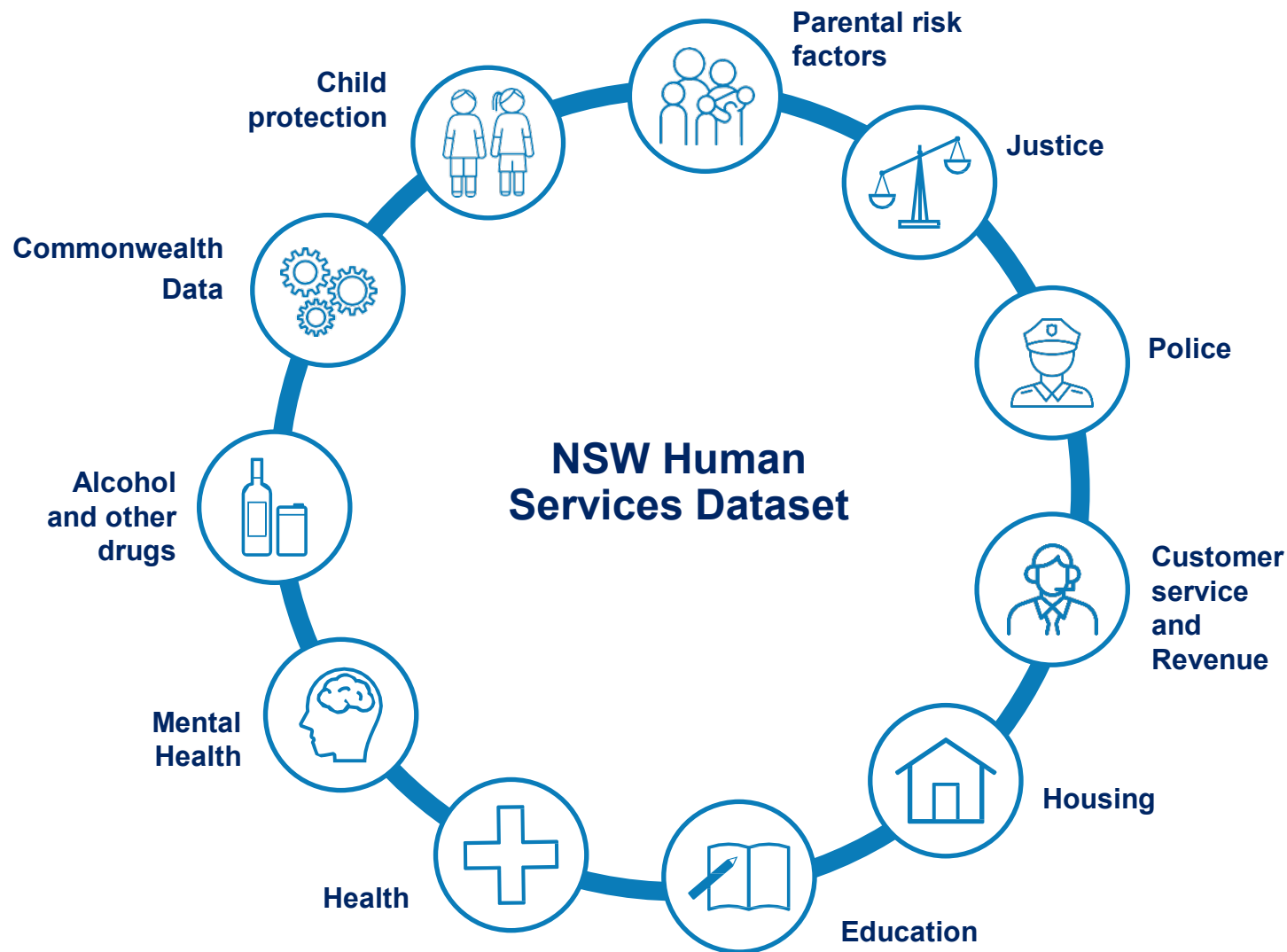


Maximising use of the linked NSW Human Services Dataset

The *NSW Human Services Dataset* has unprecedented reach, and provides a cross-agency view of how families interact with government services over time.

The dataset includes all individuals born from 1990 onwards who have received a service from at least one of the NSW services included in the dataset, as well as their parents, other family members, guardians or carers.

Data are available up to **30 June 2020**.



What is included in the NSW Human Services Dataset?

The dataset includes de-identified linked NSW and Commonwealth administrative data from more than 60 frontline datasets, up to 30 June 2020



Child protection

- Concern reports
- Risk of Significant Harm (ROSH) reports
- Safety Assessment, Risk Assessment and Risk Reassessment (SARA)
- Out of Home Care placements and type
- Restoration



Parental risk indicators

- Parent in custody
- Parent interaction with justice
- Proven alcohol and other drugs related offence or hospital admission
- Proven domestic violence related offence or victim of domestic violence
- Treatment for mental health in NSW hospital or ambulatory services



Justice

- Custody
- Community supervision
- Court finalisations
- Cautions
- Youth conferences
- Legal Aid



Police

- Victims
- Persons of interest
- AOD related events
- Domestic violence safety assessment



Customer service and Revenue

- Births, deaths & marriages
- Penalty/fines notices
- Enforcement of fines
- Work Development Orders



Housing

- Social housing tenancies and waitlist
- Private rental assistance
- Homelessness services



Education

- National Assessment Program — Literacy and Numeracy (NAPLAN) year 3 and year 7 results
- Attendance, enrolment and suspension
- HSC completion
- Unexpected government school moves
- Smart, Skilled & Hired program
- Enrolment in funded training
- Resource Allocation Model equity loadings



Health

- Public hospital admissions
- Private hospital admissions
- Emergency department presentations
- Ambulance patient contact events
- Childbirth
- Opiate treatment program



Mental health

- Hospital admission for mental health
- NSW Ambulatory mental health



Alcohol and other drugs (AOD)

- Hospital admission for alcohol and other drugs
- Proven alcohol and other drug offences



Commonwealth services*

- Welfare payments
- Medical Benefits Scheme
- Pharmaceutical Benefits Scheme
- Income and taxation
- Census data

The dataset will support policy-relevant research in Human Services across NSW



Understand the full picture of government services that different vulnerable groups receive including both NSW and Commonwealth services



Look at the effectiveness and efficiency of government in supporting better citizen outcomes, reducing inequality, poverty.



Support a more joined up service delivery between NSW and Commonwealth agencies at the NSW and local level.



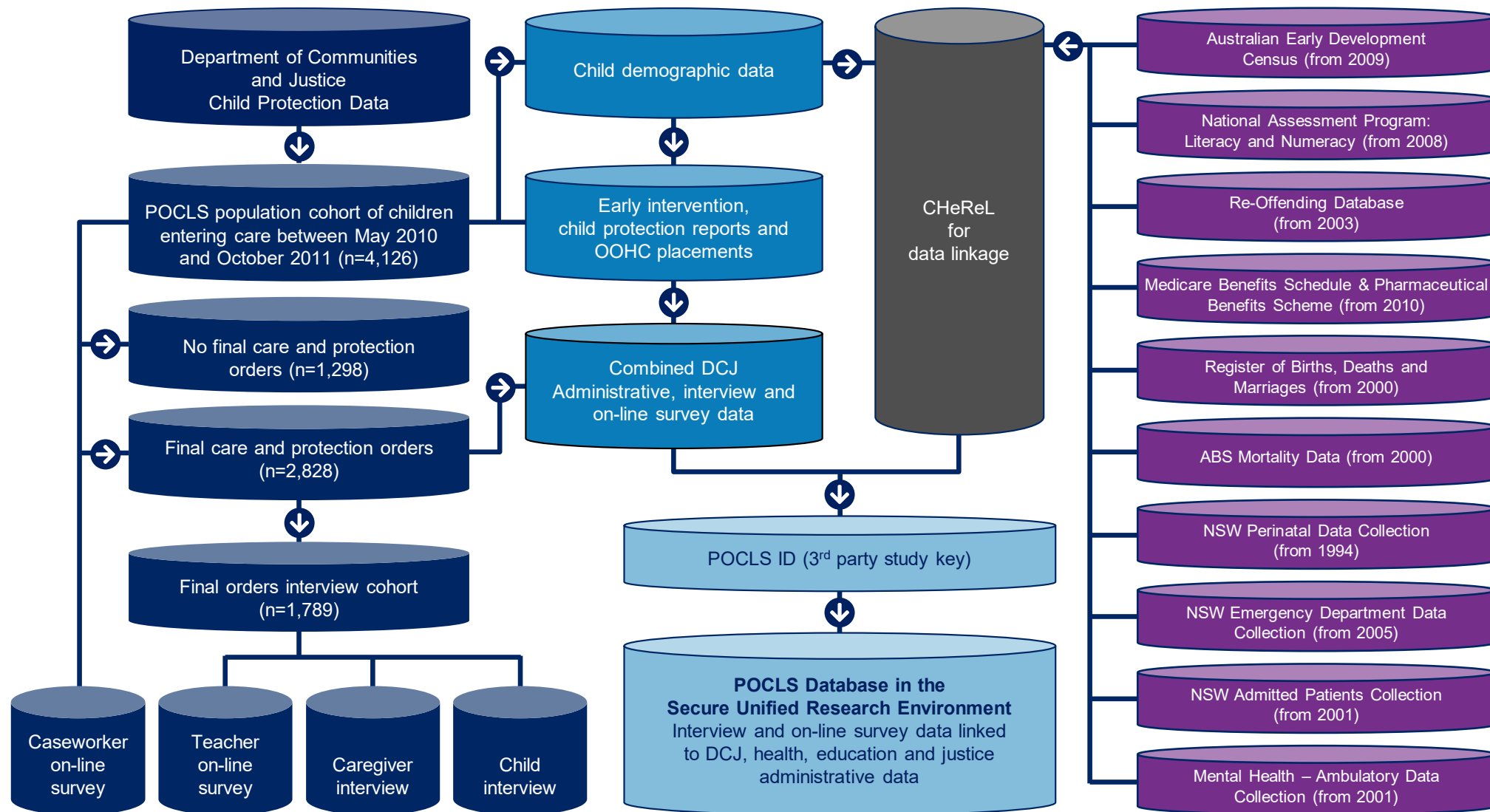
Early identification of service needs for families and communities before they reach crisis point and reducing overall liability to government through earlier intervention.

Pathways of Care Longitudinal Study (POCLS)

- POCLS is the first large-scale 10-year prospective longitudinal study of children and young people in out-of-home care (OOHC) in Australia.
- POCLS commenced in 2011 and tracks a population cohort of 4,126 children and young people who entered care for the first time between May 2010 and October 2011 – we currently have 10 years of longitudinal data about children in OOHC.
- POCLS collects detailed information about the life course development of children who enter OOHC in order to understand the factors that influence children's safety, permanency and wellbeing to inform policy, practice and improve the service system.
- POCLS examines children's experiences in OOHC and developmental pathways in the domains of safety, physical health, socio-emotional wellbeing and cognitive/language development.
- POCLS links data on children's child protection backgrounds, OOHC placements, health, education and offending and matches it to first-hand accounts from children, caregivers, caseworkers and teachers.



Pathways of Care Longitudinal Study (POCLS) data asset



Pathways of Care Longitudinal Study (POCLS) research agenda

The POCLS strategic research agenda is developed through extensive consultation with stakeholders.

The key focus areas are:

1. OOHC service system and factors that influence children's outcomes
2. Permanency options and children's outcomes
3. Experiences of children and young people who have entered OOHC and their developmental outcomes over time
4. Carer characteristics and what can we do to better support carers
5. Experiences and developmental outcomes for cohorts of interest.

Knowledge translation is a key focus of our work. A POCLS Evidence to Action Working Group has been established to reflect the collaborative effort required to translate research findings to support evidence-informed policy development, practice innovation and service delivery.

POCLS will adopt the DCJ research governance principles informed by the work undertaken to address the Family is Culture Recommendation on Indigenous Data Sovereignty (IDS) and Indigenous Data Governance (IDG). A process for Aboriginal-led knowledge translation will be established.

For more information see the POCLS Objectives and Strategic Research Agenda (Technical Report 1)

www.facs.nsw.gov.au/resources/research/pathways-of-care/pocls-publication/pocls-technical-reports

Pathways of Care Longitudinal Study (POCLS) - examples of analysis projects for 2021

Analytical projects in FACSIAR in 2021:

- What are the characteristics and experiences of the high needs cohort and the resilient cohort overtime by age at entry to OOHC?
- How are children developing in terms of their socio-emotional wellbeing, cognitive learning ability and health after exiting OOHC to restoration and guardianship?
- What are the support needs of carers across different placement types, carer characteristics and Districts?
- What are the differences in characteristics and outcomes for children managed by DCJ compared to those managed by NGOs?
- What are children and young people telling us about their experiences of OOHC?

Ten commissioned analytical projects will be completed in 2021 on DCJ priority policy questions.

The first Aboriginal-led analytical project using the POCLS data will be completed in 2021.



Pathways of Care Longitudinal Study (POCLS) - access to the POCLS data

- **Unit record data** is stored in the Secure Unified Research Environment (SURE) www.saxinstitute.org.au
- It is available to approved researchers in Australia and overseas under strict controls to ensure the information is being used appropriately, and that the research is scientifically sound, feasible and answers important policy questions.
- **Aggregated data** is available through research reports, interactive dashboards, podcasts and conference presentations.



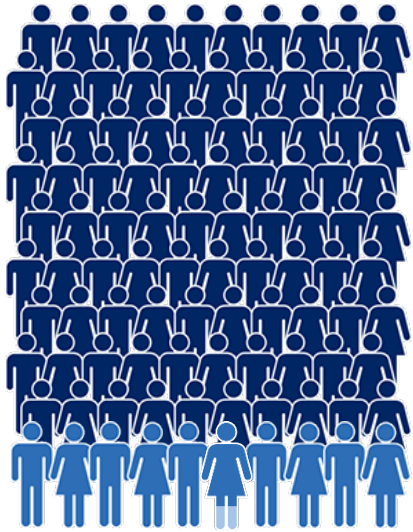
Pathways of Care Longitudinal Study

Phone: 1800 997 960

Email: Pathways@facs.nsw.com.au

www.facs.nsw.gov.au/resources/research/pathways-of-care

Key findings from linked data sets



Top 0.2% of the NSW population most at risk account for one third of rough sleepers and we now know their pathways into to homelessness

Source: Pathways to Homelessness data linkage, 2019

Six risk factors, when considered together, can classify a child's risk of entering Out-of-Home Care with 95% accuracy



Home environment problems



Maternal mental disorder



Young maternal age at birth (less than 25 years)



Maternal smoking during pregnancy



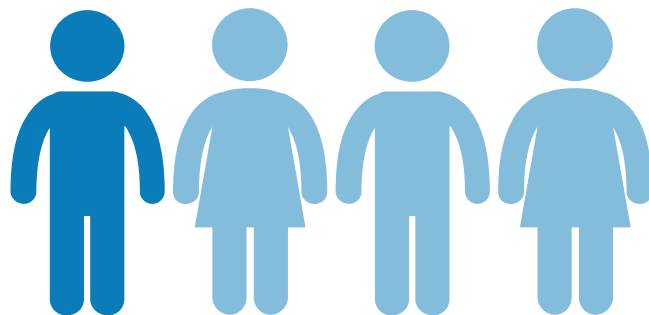
Father in custody



Maternal criminal charge

Source: NSW Child Development Study, M. Green et. al., 2019

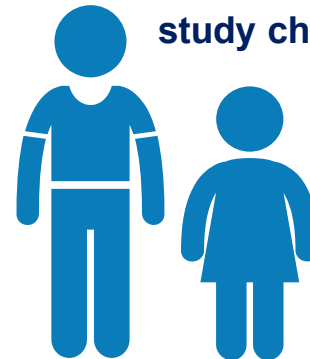
1 in 4 children in NSW are reported at Risk of Significant Harm before they are 10 years old



Source: FACSIAR analysis to inform policy, 2018

44%

of POCLS study children



Had 3 or more school moves by 17 years

POCLS study children had lower NAPLAN participation and achievement

Source: Pathways of Care Longitudinal data linkage, M. Townsend et. al., 2020

How to find more information: DCJ Research Hub (<https://www.dcj.nsw.gov.au/about-us/research-strategy>)



Research Strategy 2020-2022

Research supports the Department of Communities and Justice to deliver evidence-based policy and practice that improve client and community outcomes.

About the Communities and Justice Research Strategy

The vision, principles, aims and approach behind the DCJ research strategy.

Communities and Justice Research Priorities

Explore where we focus our efforts to address the most pressing evidence gaps and achieve better outcomes for our clients and the community.

Communities and Justice Research Activities

Read about the different types of research activities in Communities and Justice.

Our Research Centres

Get an overview of the different Research Centres across Communities and Justice.

Our Research Projects and Partners

Have a look at examples of our past and current research projects and partnerships.

Collaborate with us

Find out how you can collaborate with DCJ for your research.

BOCSAR

CRES

Youth Justice

FACSIAR

Human Services Dataset

Human Services Dataset

Email: HSDS@facs.nsw.gov.au



Pathways of Care Longitudinal Study

Phone: 1800 997 960

Email: Pathways@facs.nsw.com.au

www.facs.nsw.gov.au/resources/research/pathways-of-care

Contact for more information



Jessica Stewart

Executive Director
Family & Community Services
Insights, Analysis and Research
jessica.stewart@facs.nsw.gov.au



Merran Bulter

Director, Statistical Analysis, Data Governance and Research
Family & Community Services
Insights, Analysis and Research
merran.butler@facs.nsw.gov.au

