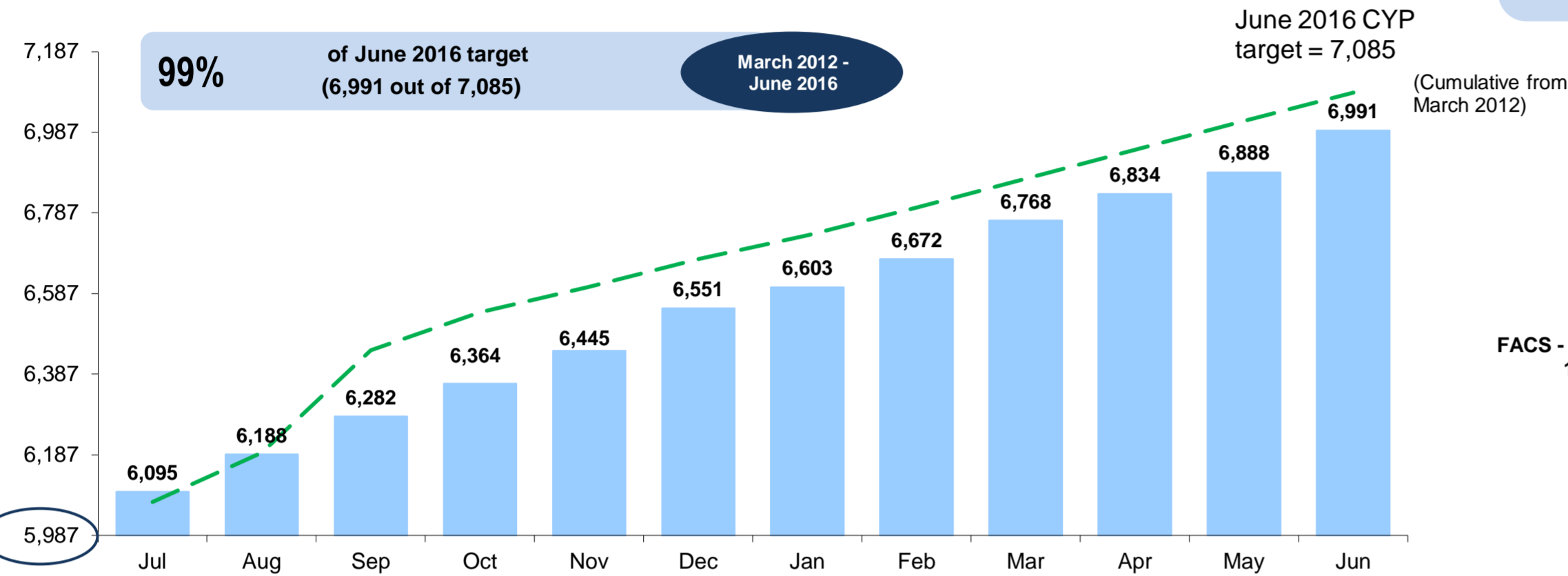


OOHC and Transition Dashboard 2015/16 - New South Wales June 2016

CYP transitioned by month - Cumulative from March 2012

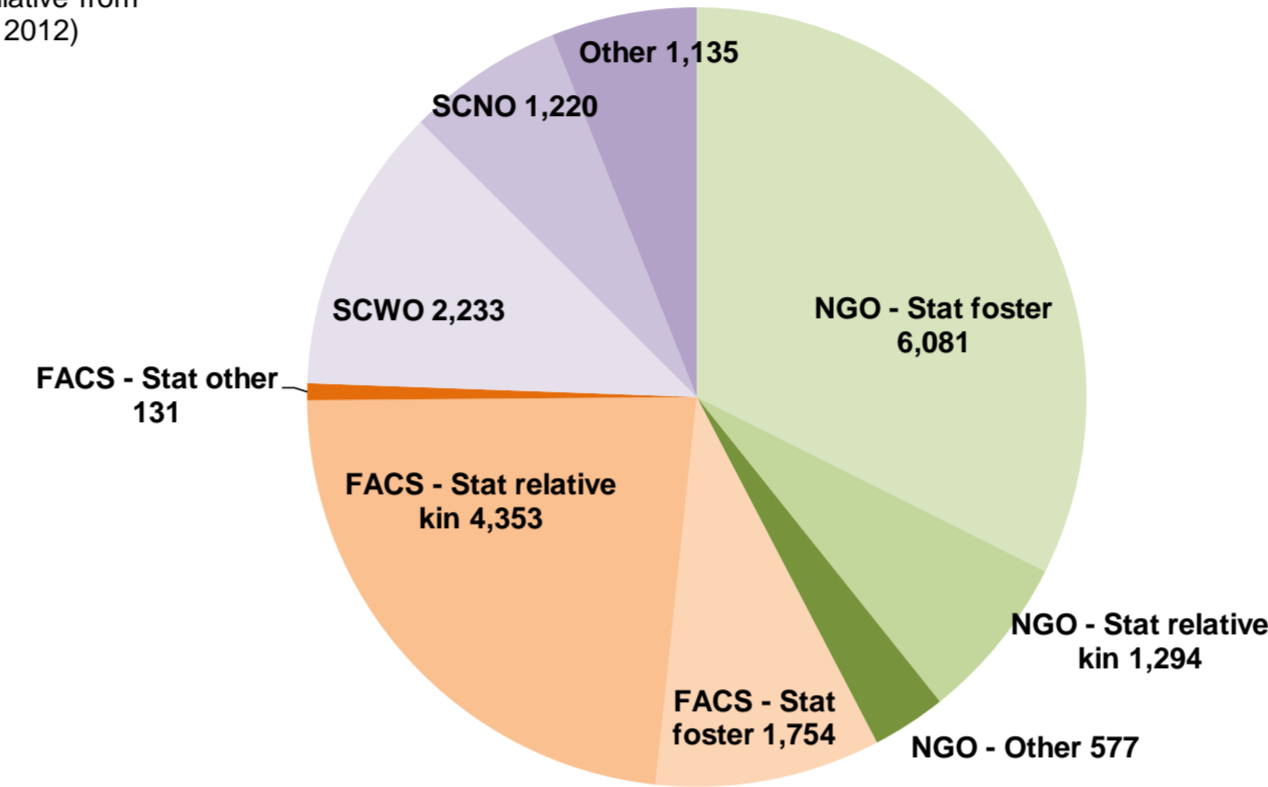


18,778

Total OOHC population as at June 2016

2,492

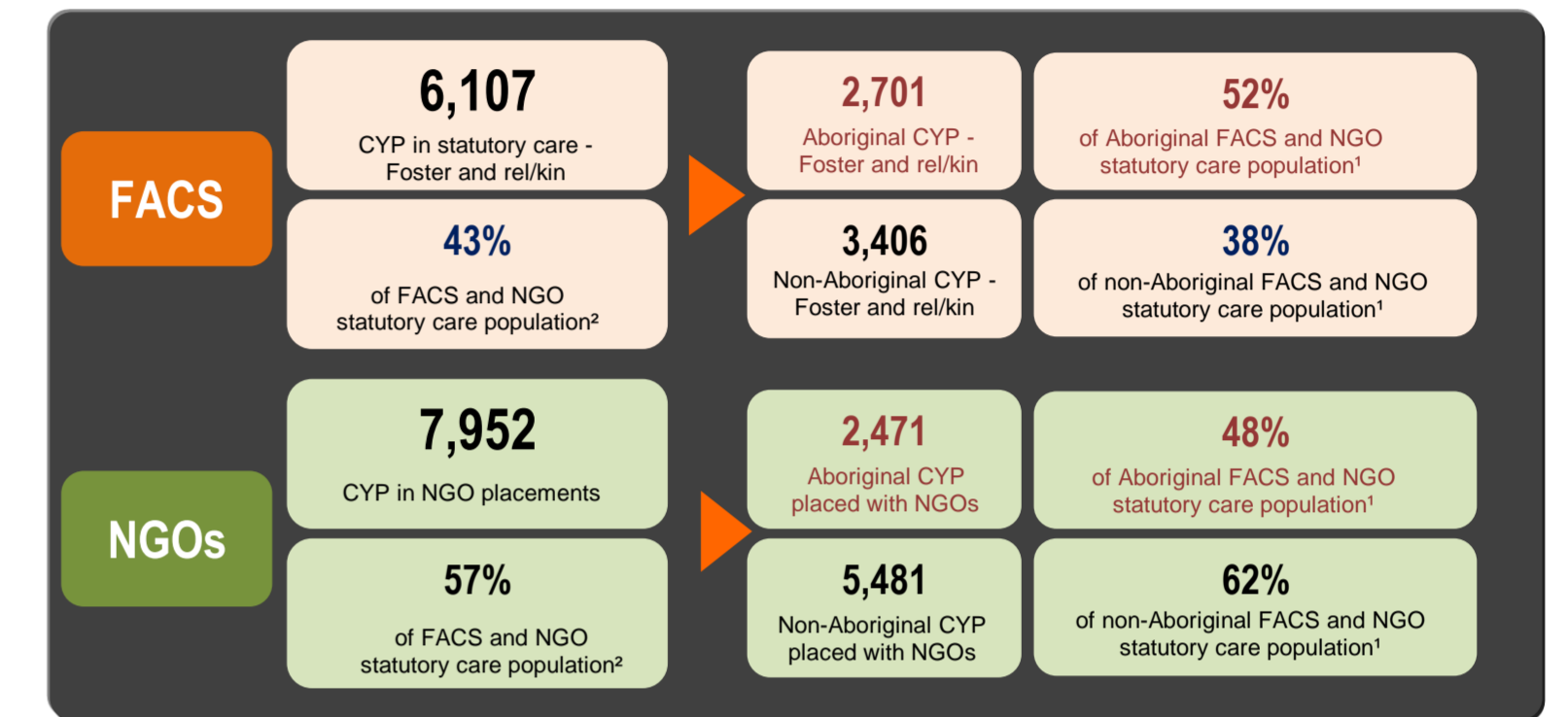
Guardianship orders as at June 2016



Total CYP in OOHC as at June 2016

FACS and NGO statutory care population¹ as at June 2016

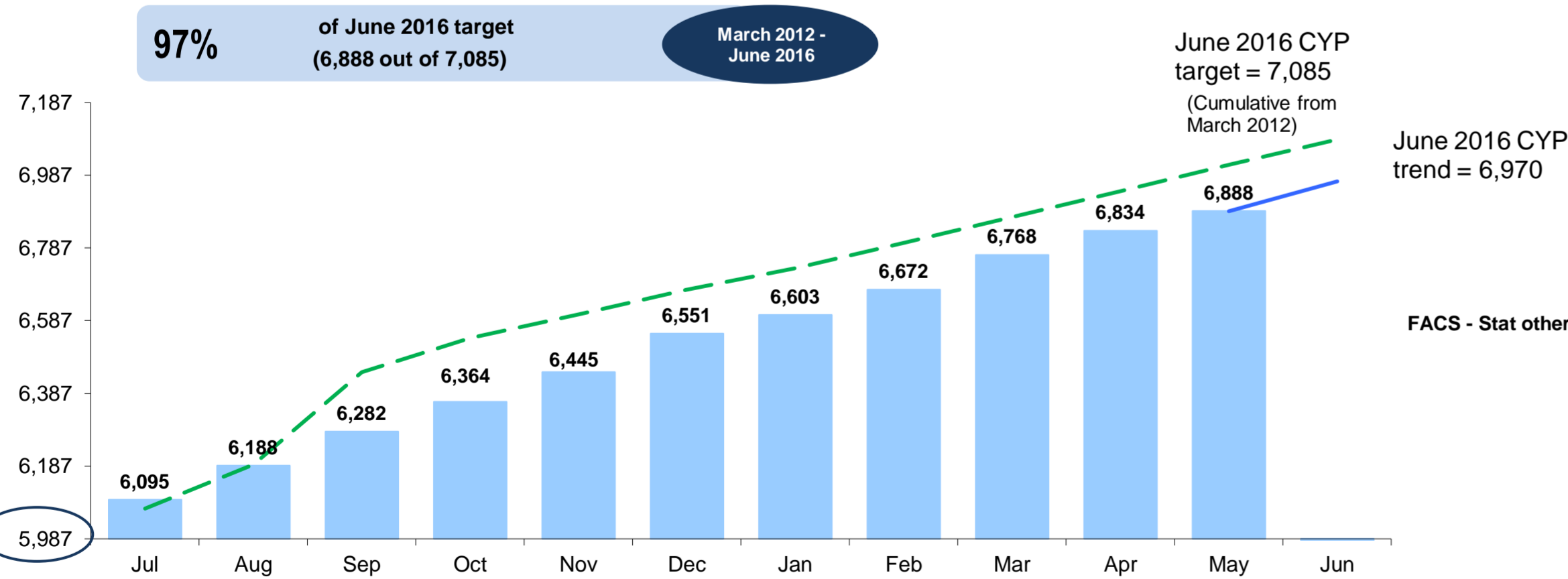
= 14,059



¹ and 2. Includes CYP in FACS - Stat foster, FACS - Stat relative kin, NGO - Stat foster, NGO relative kin and NGO - Other.

OOHC and Transition Dashboard 2015/16 - New South Wales May 2016

CYP transitioned by month - Cumulative from March 2012

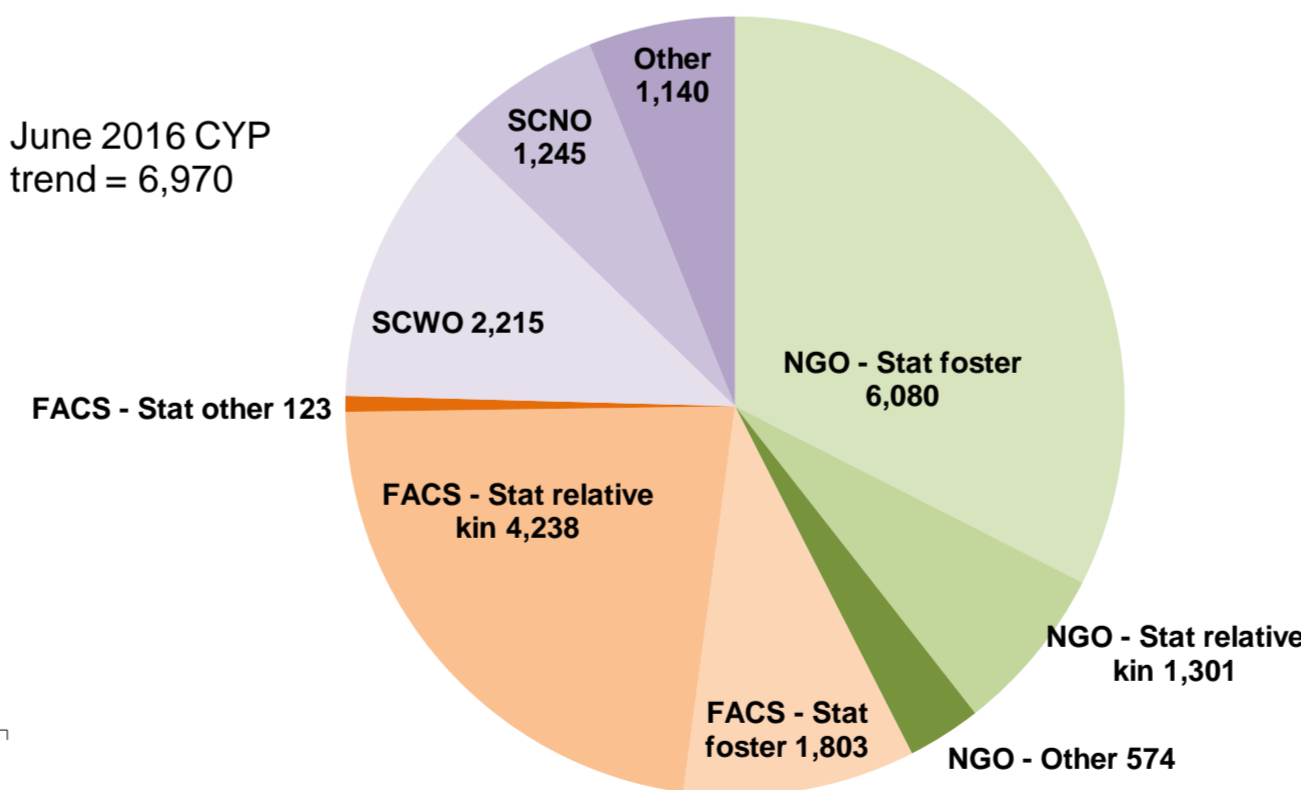


18,719

Total OOHC population as at May 2016

2,506

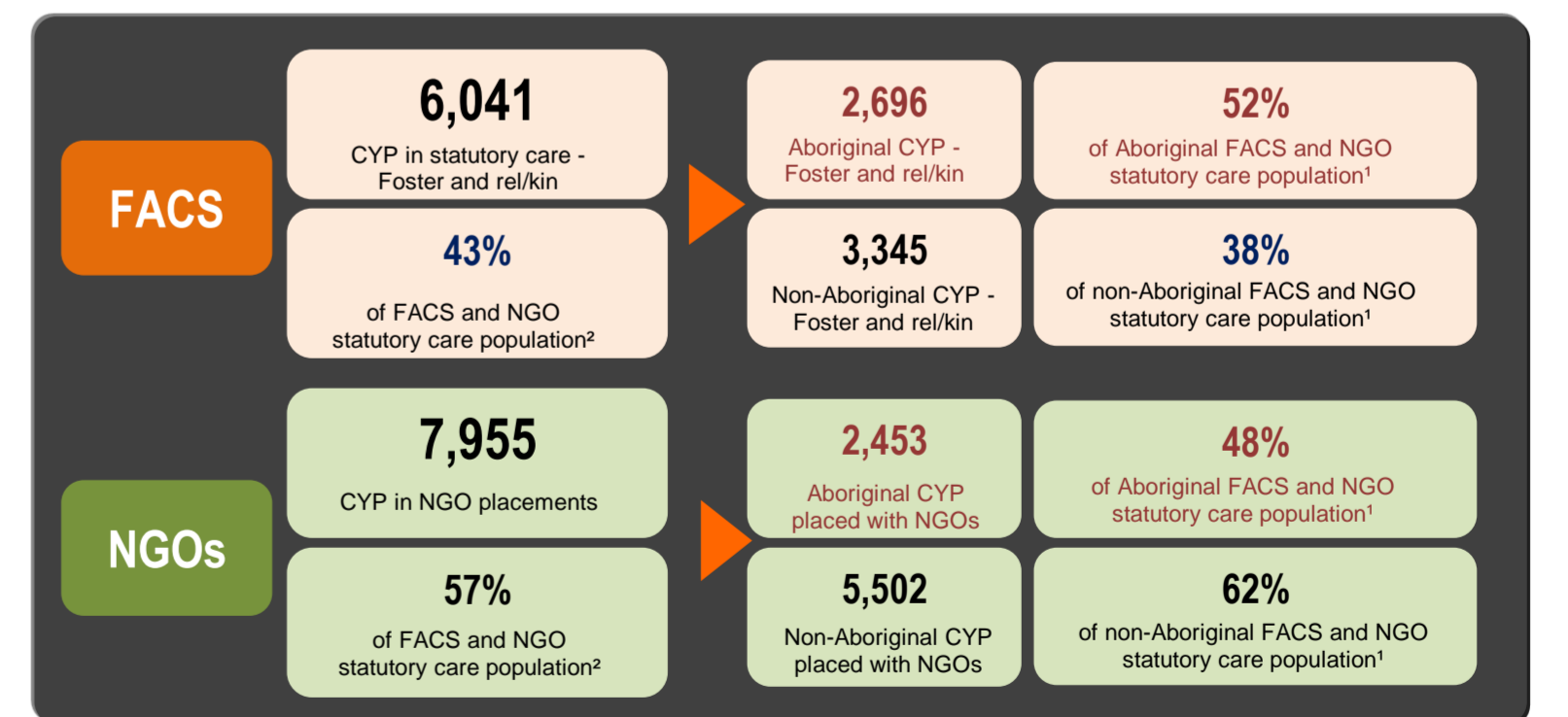
Guardianship orders as at May 2016



Total CYP in OOHC as at May 2016

FACS and NGO statutory care population¹ as at May 2016

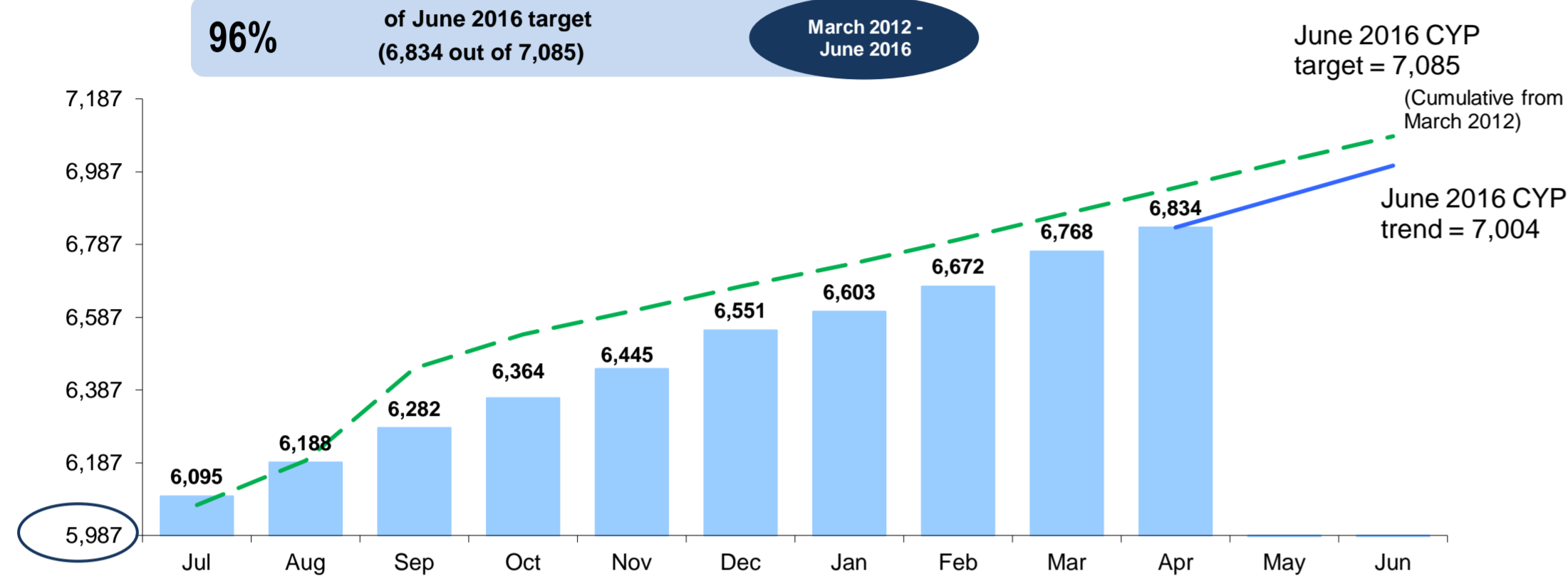
= 13,996



¹ and 2. Includes CYP in FACS - Stat foster, FACS - Stat relative kin, NGO - Stat foster, NGO relative kin and NGO - Other.

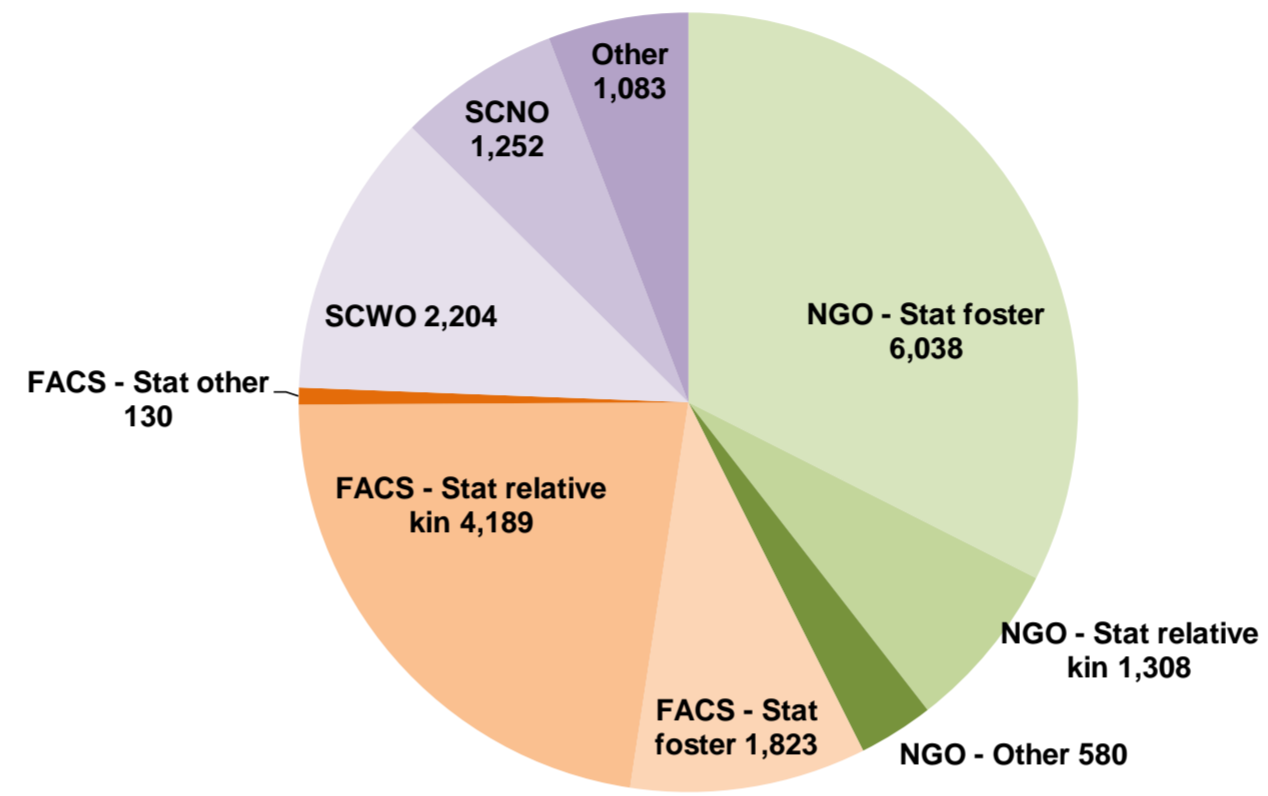
OOHC and Transition Dashboard 2015/16 - New South Wales April 2016

CYP transitioned by month - Cumulative from March 2012



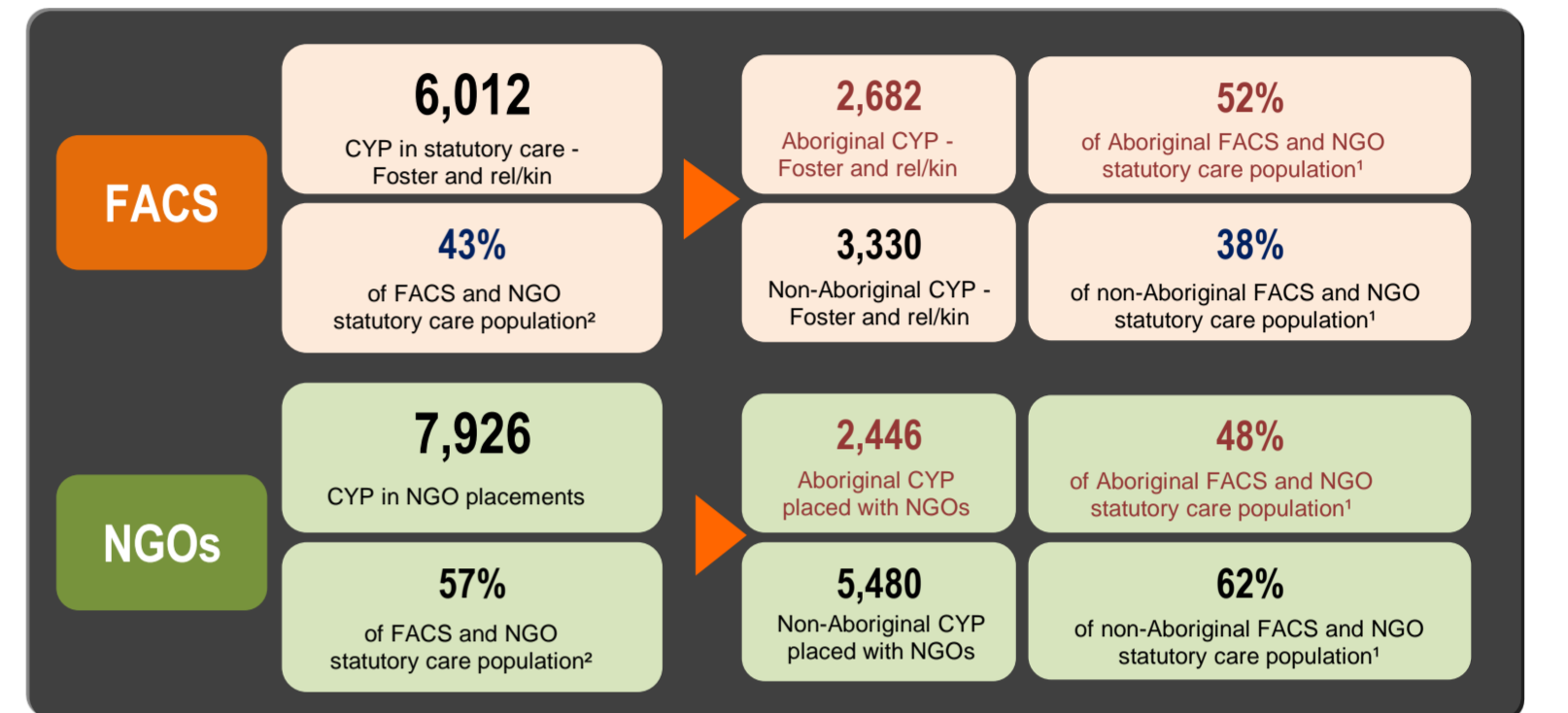
18,607
Total OOHC population as at April 2016

2,505
Guardianship orders as at April 2016



Total CYP in OOHC as at April 2016

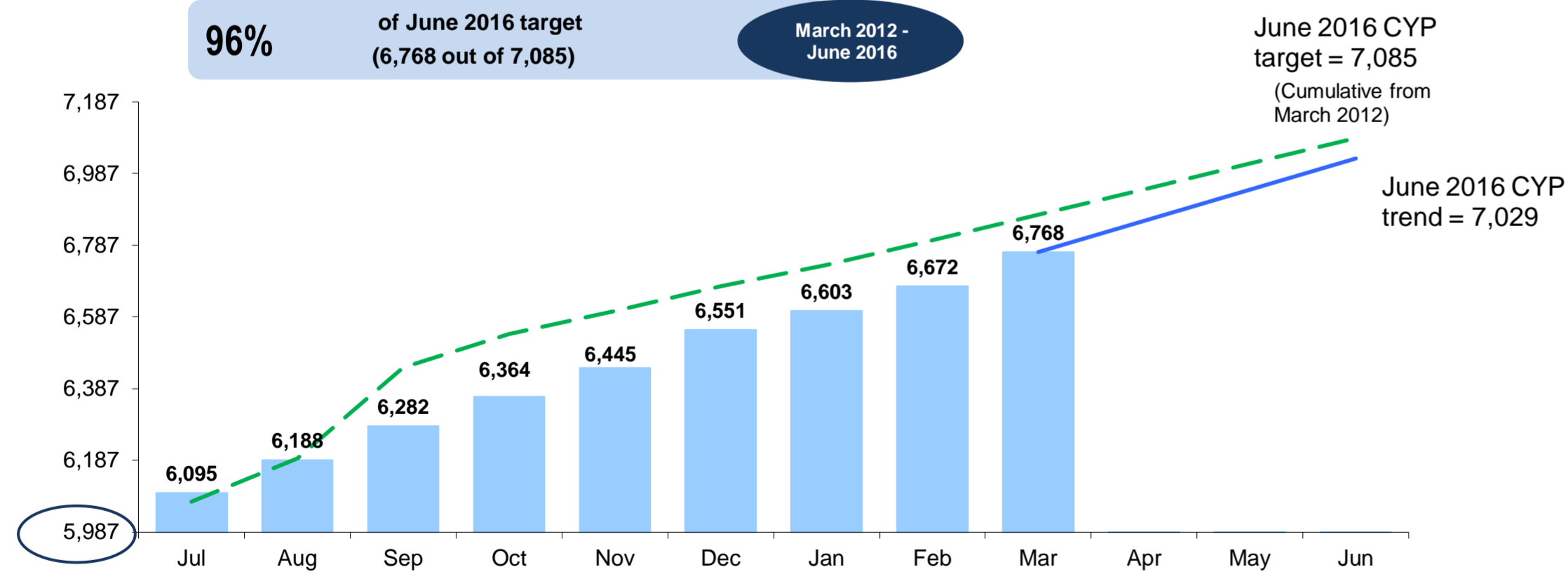
FACS and NGO statutory care population¹ as at April 2016 = 13,938



¹ and 2. Includes CYP in FACS - Stat foster, FACS - Stat relative kin, NGO - Stat foster, NGO relative kin and NGO - Other.

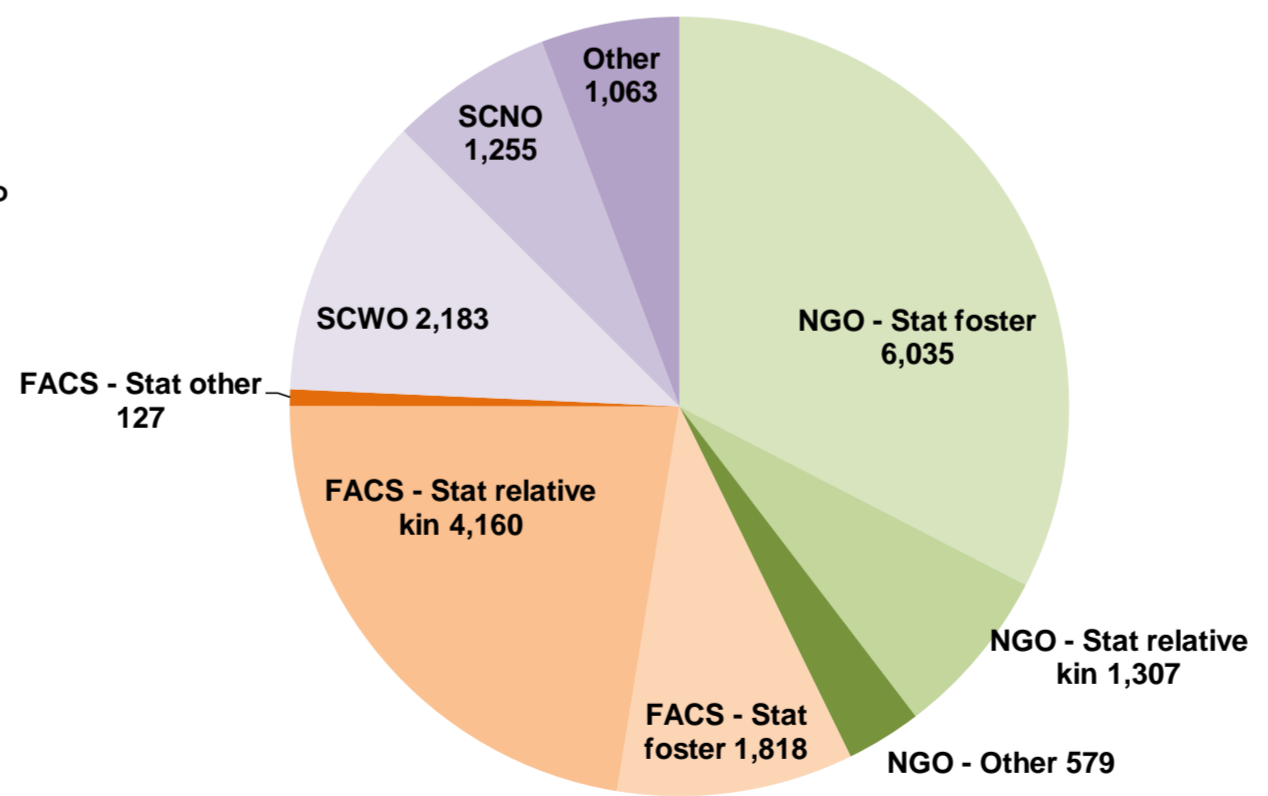
OOHC and Transition Dashboard 2015/16 - New South Wales March 2016

CYP transitioned by month - Cumulative from March 2012



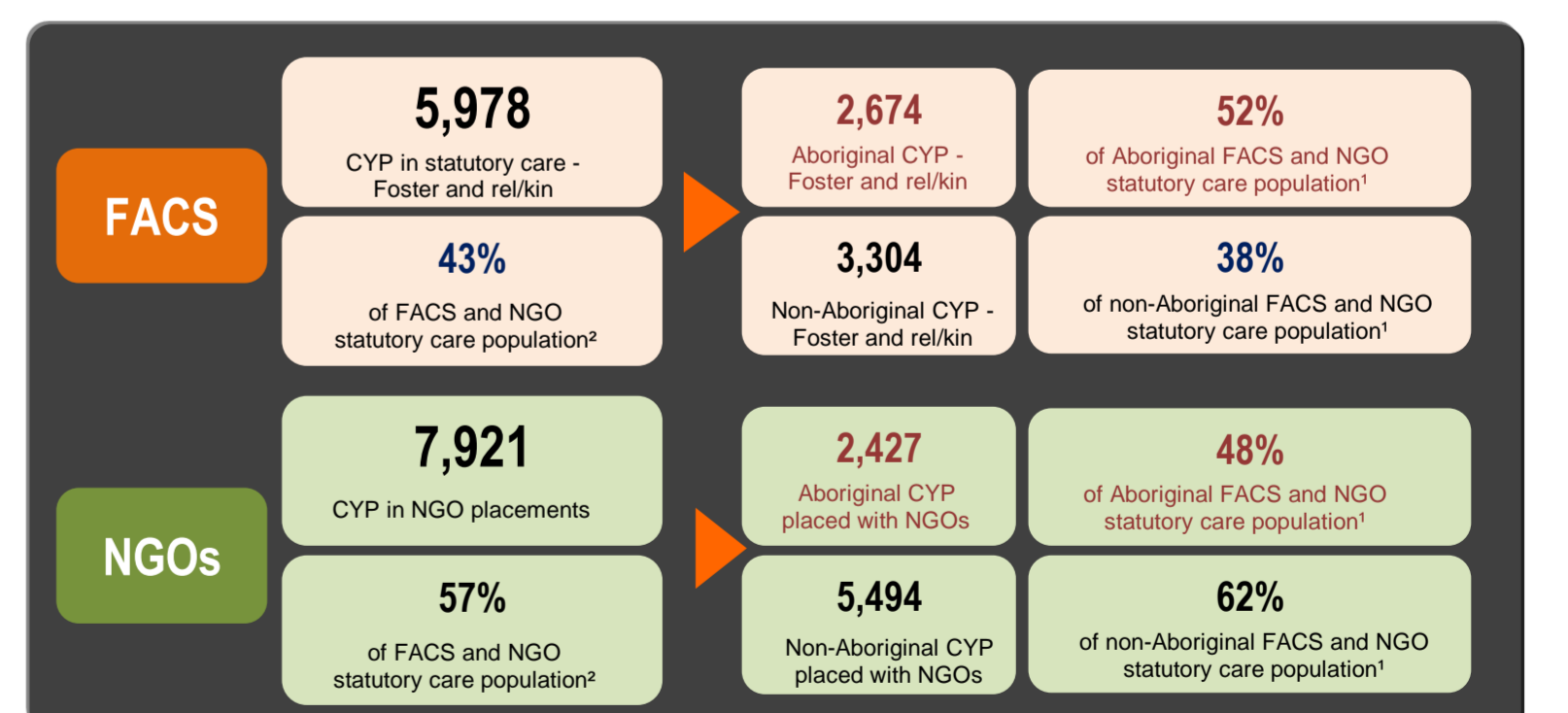
18,527
Total OOHC population as at March 2016

2,500
Guardianship orders as at March 2016



Total CYP in OOHC as at March 2016

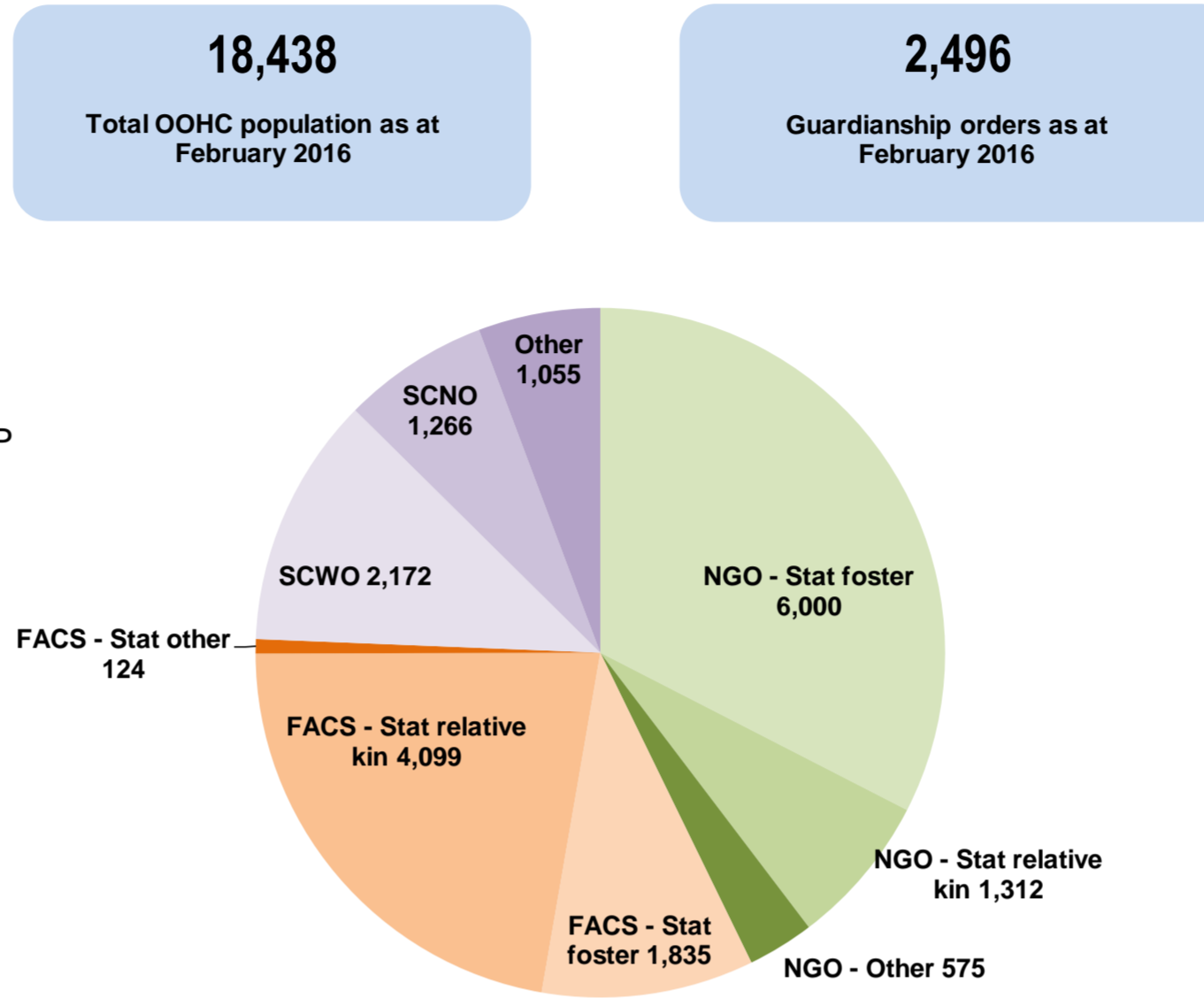
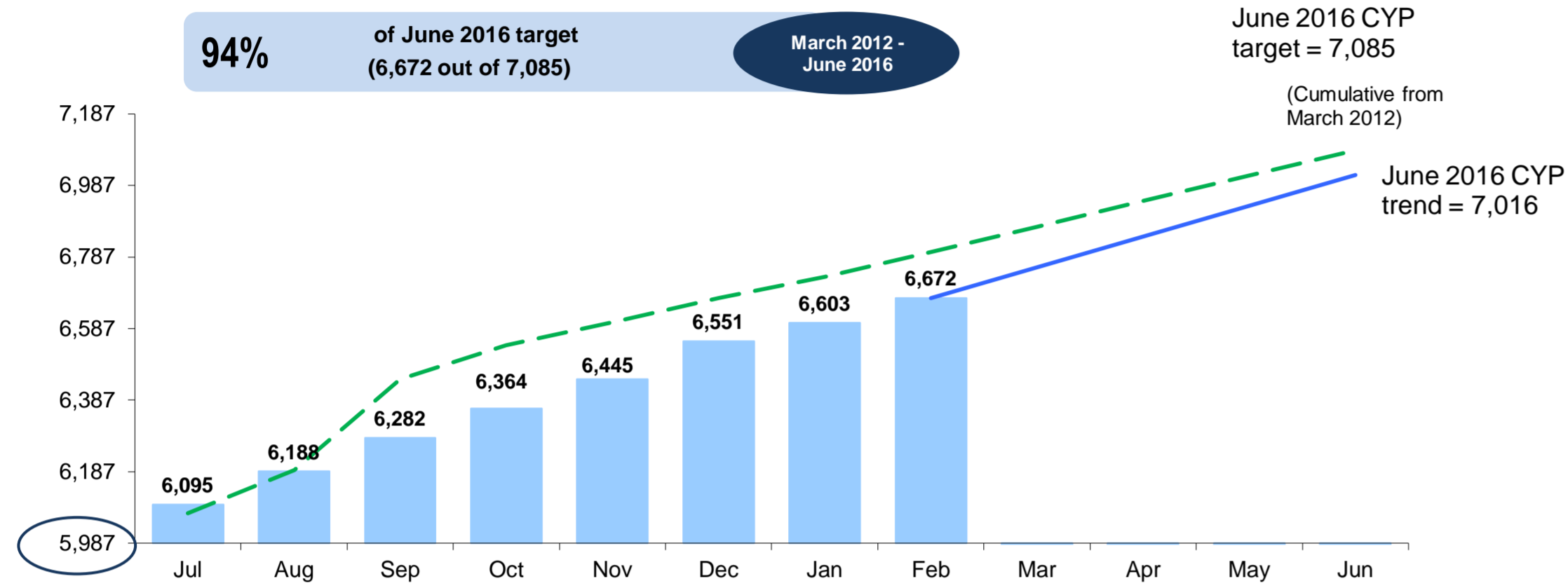
FACS and NGO statutory care population¹ as at March 2016 = 13,899



¹ and 2. Includes CYP in FACS - Stat foster, FACS - Stat relative kin, NGO - Stat foster, NGO relative kin and NGO - Other.

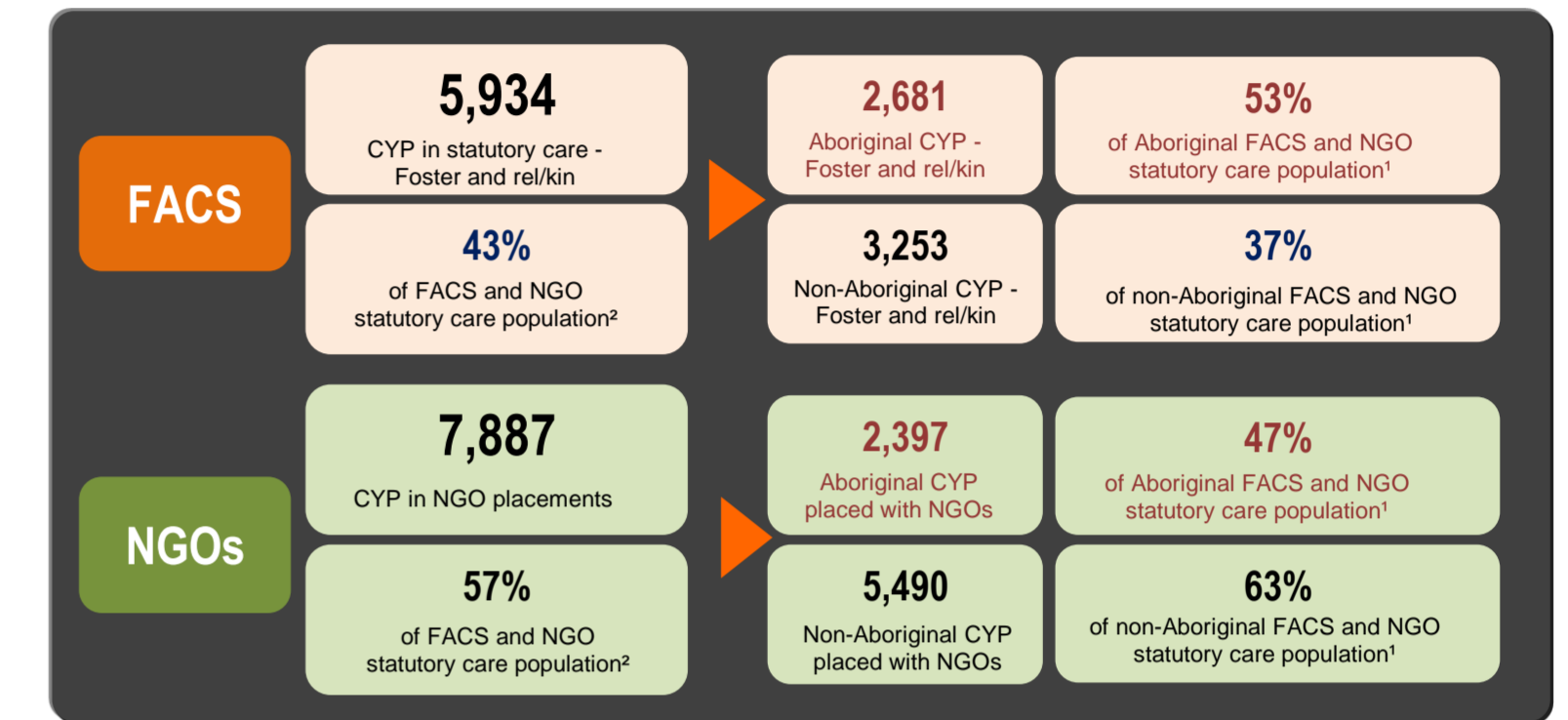
OOHC and Transition Dashboard 2015/16 - New South Wales February 2016

CYP transitioned by month - Cumulative from March 2012



Total CYP in OOHC as at February 2016

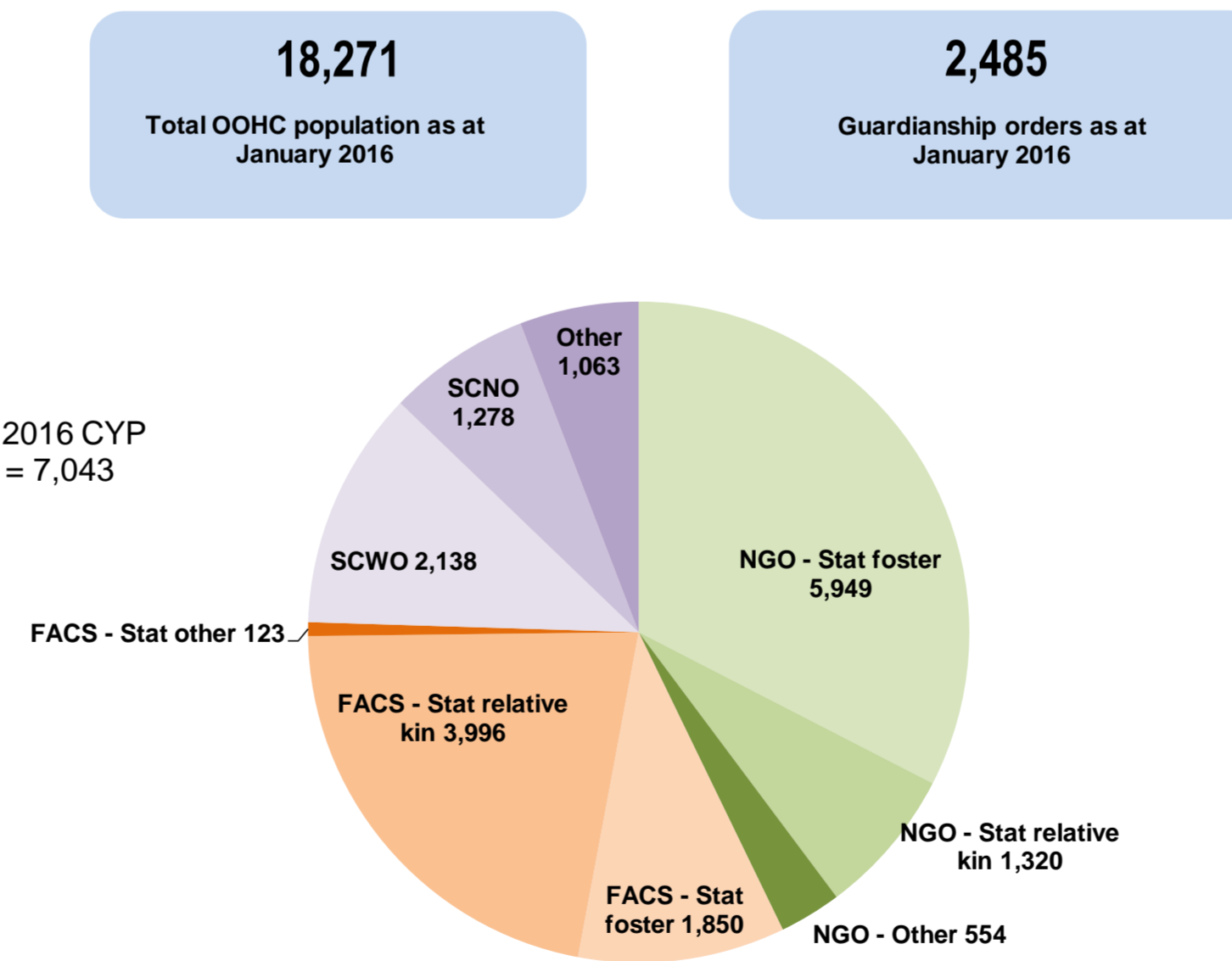
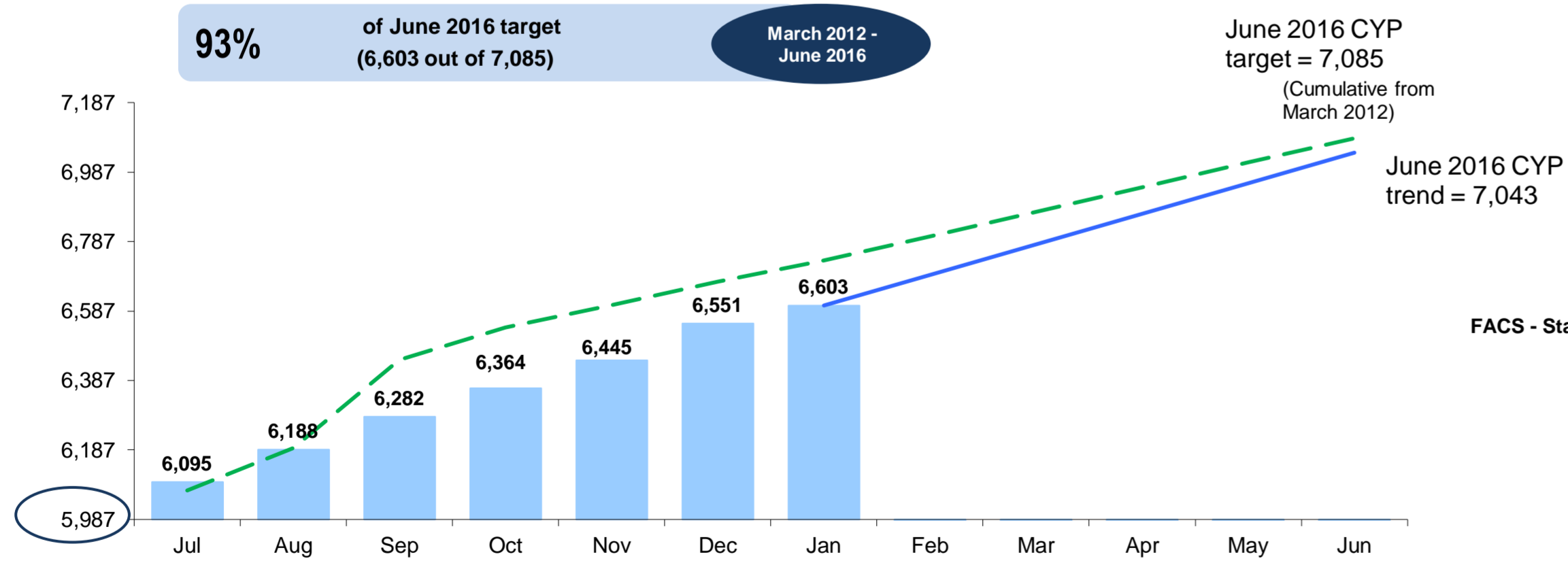
FACS and NGO statutory care population¹ as at February 2016 = 13,821



1 and 2. Includes CYP in FACS - Stat foster, FACS - Stat relative kin, NGO - Stat foster, NGO relative kin and NGO - Other.

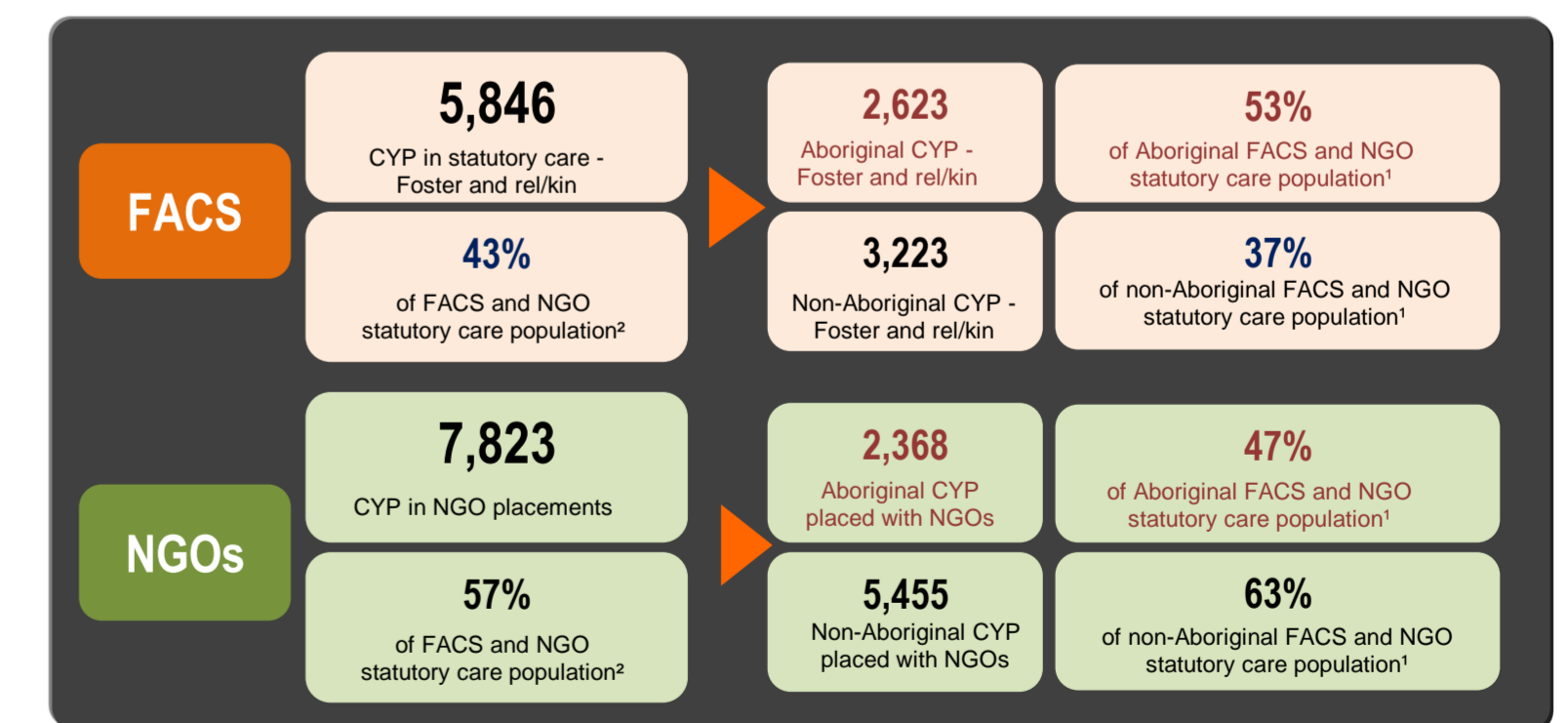
OOHC and Transition Dashboard 2015/16 - New South Wales January 2016

CYP transitioned by month - Cumulative from March 2012



Total CYP in OOHC as at January 2016

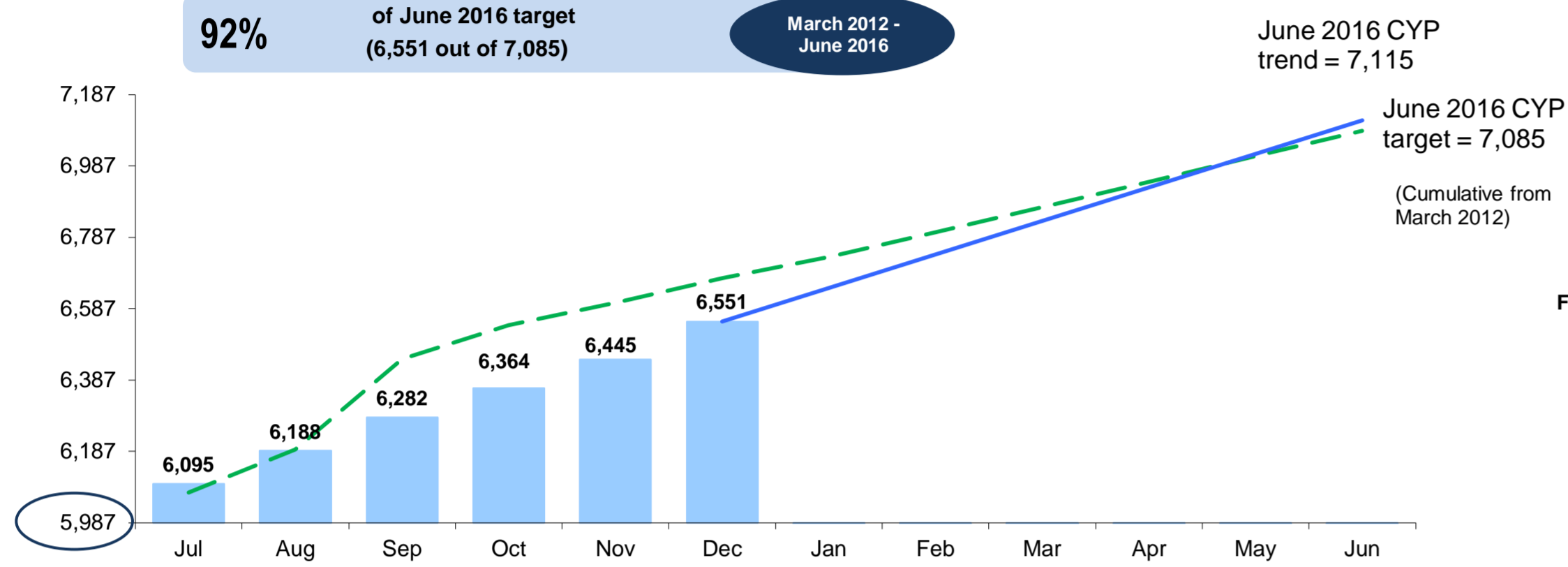
FACS and NGO statutory care population¹ as at January 2016 = 13,669



1 and 2. Includes CYP in FACS - Stat foster, FACS - Stat relative kin, NGO - Stat foster, NGO relative kin and NGO - Other.

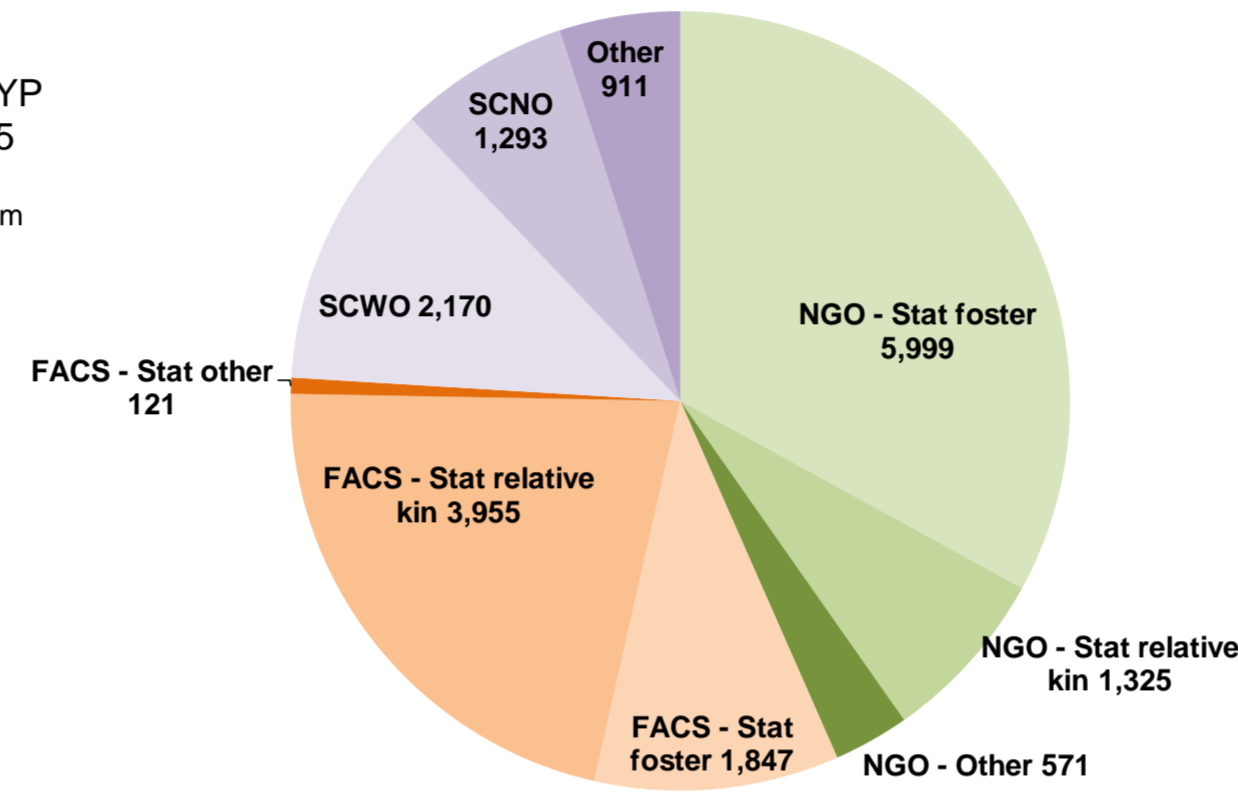
OOHC and Transition Dashboard 2015/16 - New South Wales December 2015

CYP transitioned by month - Cumulative from March 2012



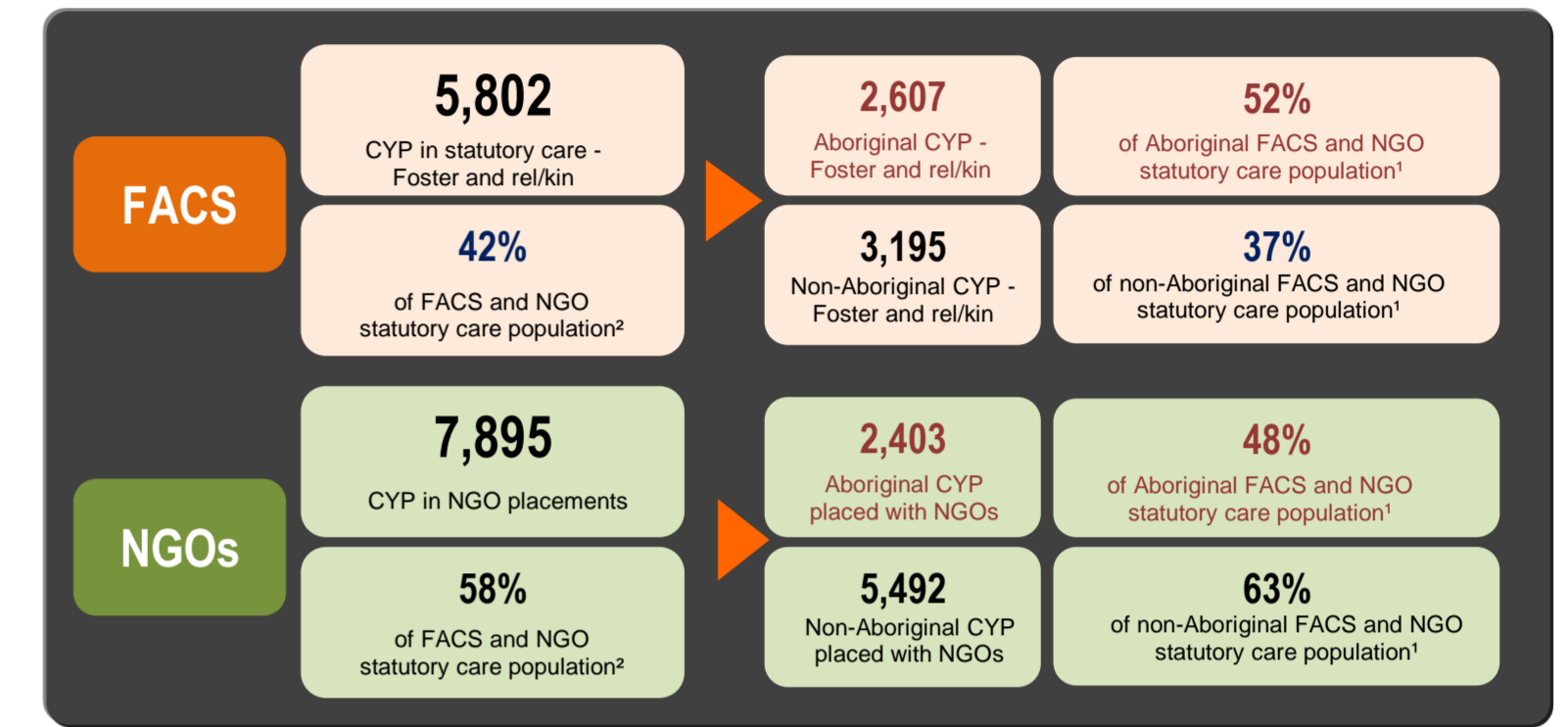
18,192
Total OOHC population as at December 2015

2,463
Guardianship orders as at December 2015



Total CYP in OOHC as at December 2015

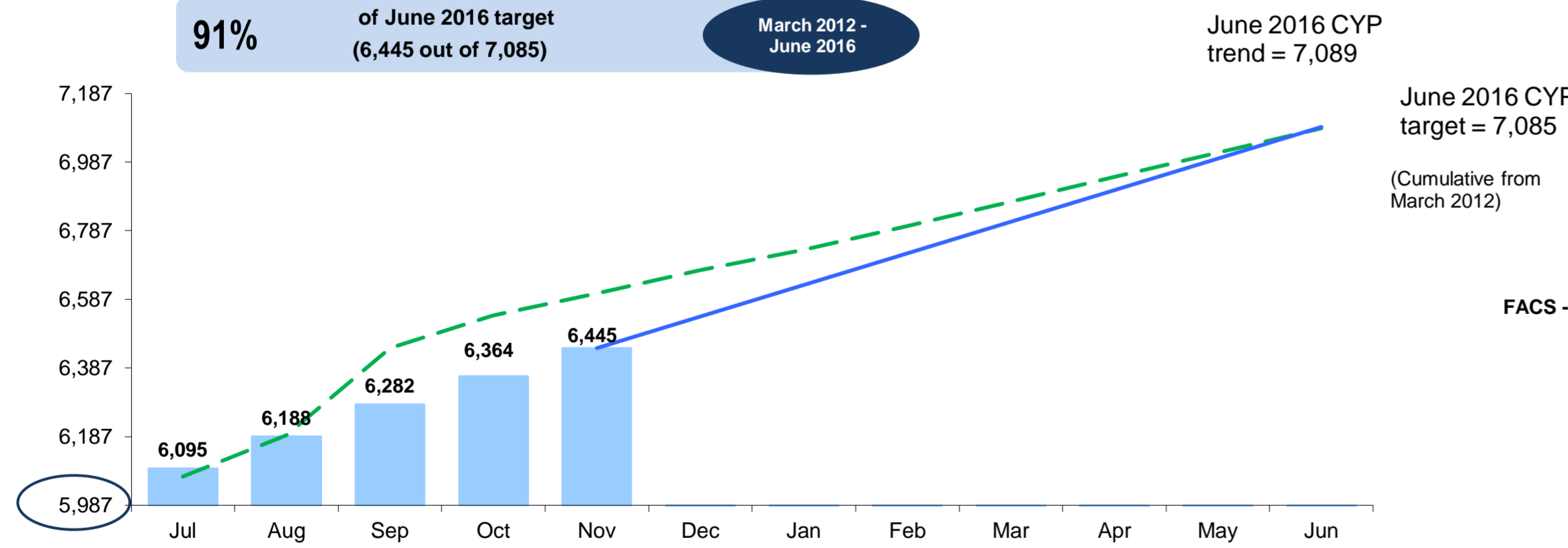
FACS and NGO statutory care population¹ as at December 2015 = 13,697



1 and 2. Includes CYP in FACS - Stat foster, FACS - Stat relative kin, NGO - Stat foster, NGO relative kin and NGO - Other.

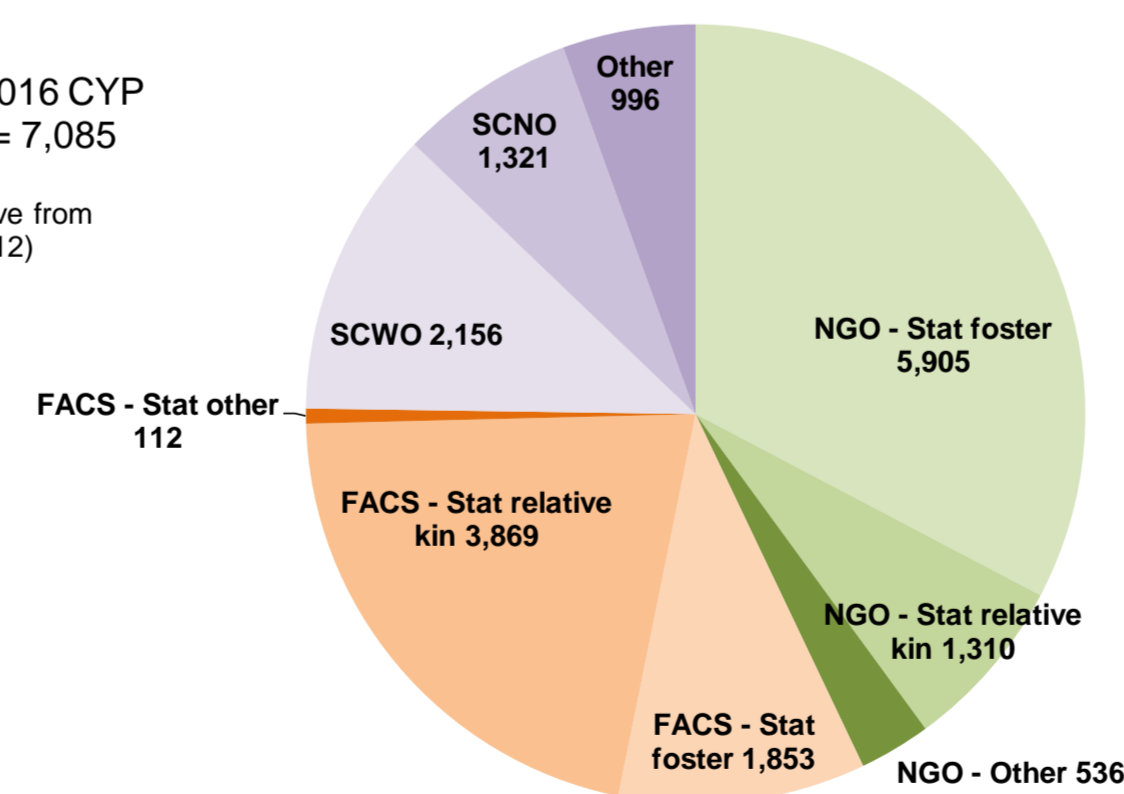
OOHC and Transition Dashboard 2015/16 - New South Wales November 2015

CYP transitioned by month - Cumulative from March 2012



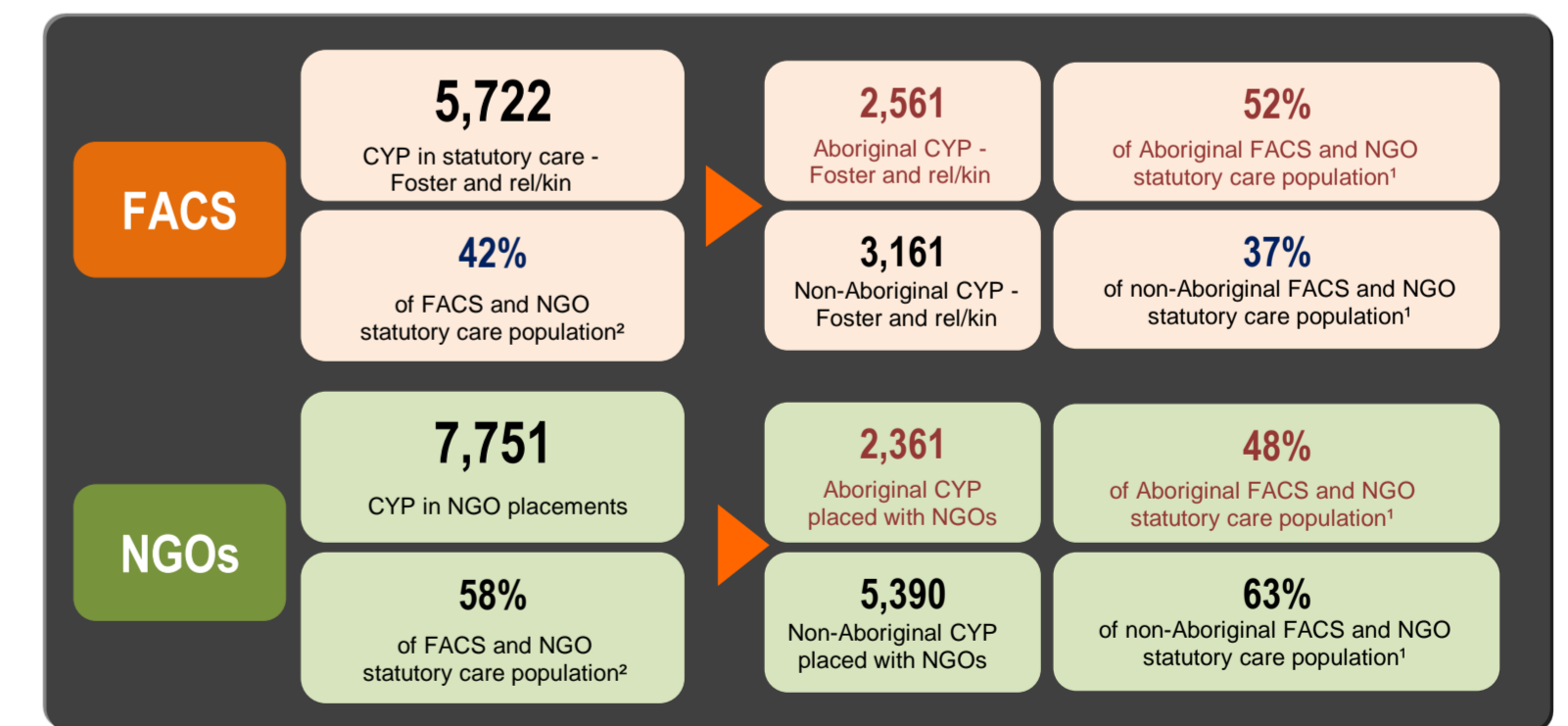
18,058
Total OOHC population as at November 2015

2,457
Guardianship orders as at November 2015



Total CYP in OOHC as at November 2015

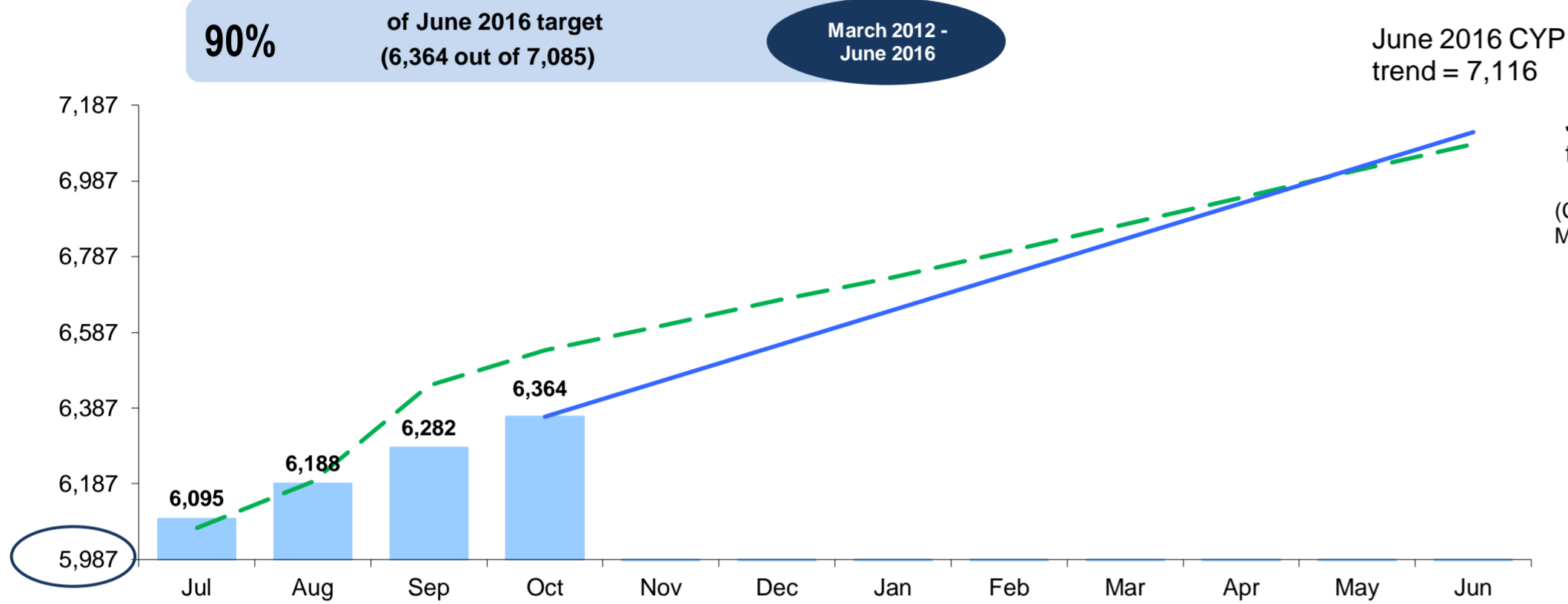
FACS and NGO statutory care population¹ as at November 2015 = 13,473



1 and 2. Includes CYP in FACS - Stat foster, FACS - Stat relative kin, NGO - Stat foster, NGO relative kin and NGO - Other.

OOHC and Transition Dashboard 2015/16 - New South Wales October 2015

CYP transitioned by month - Cumulative from March 2012

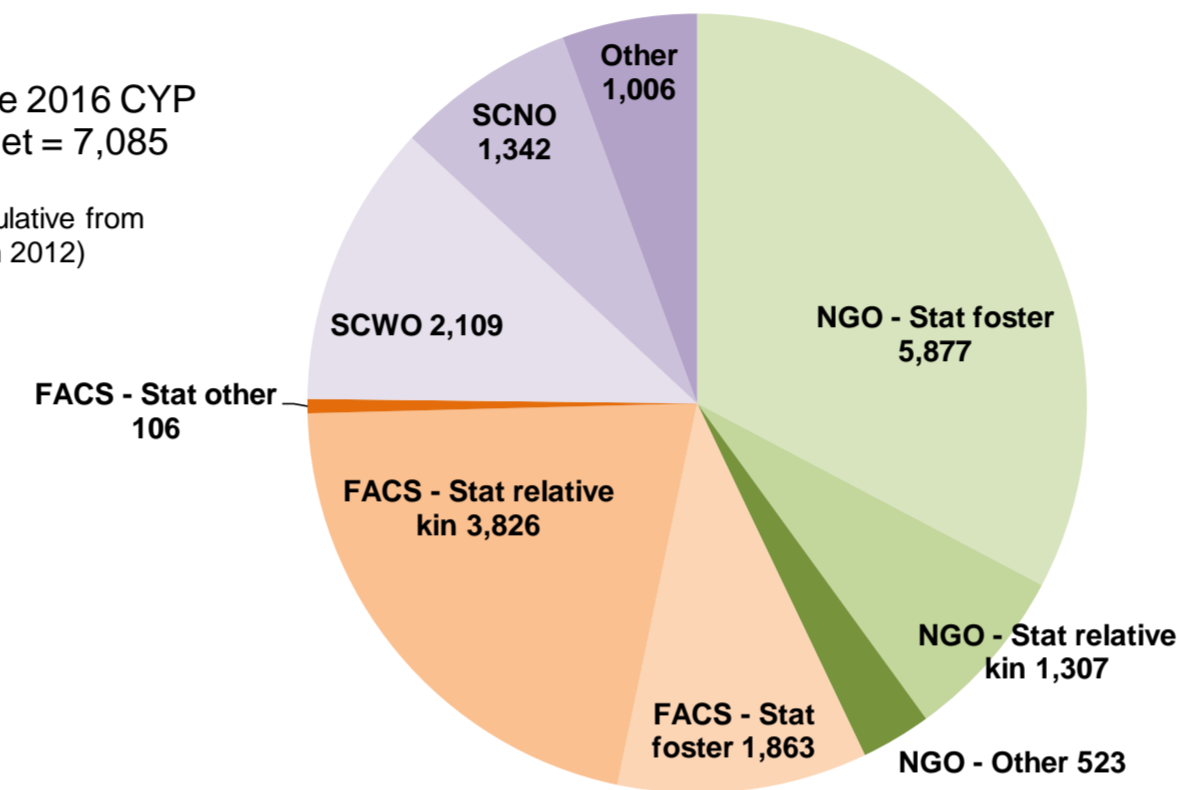


17,959

Total OOHC population as at October 2015

2,457

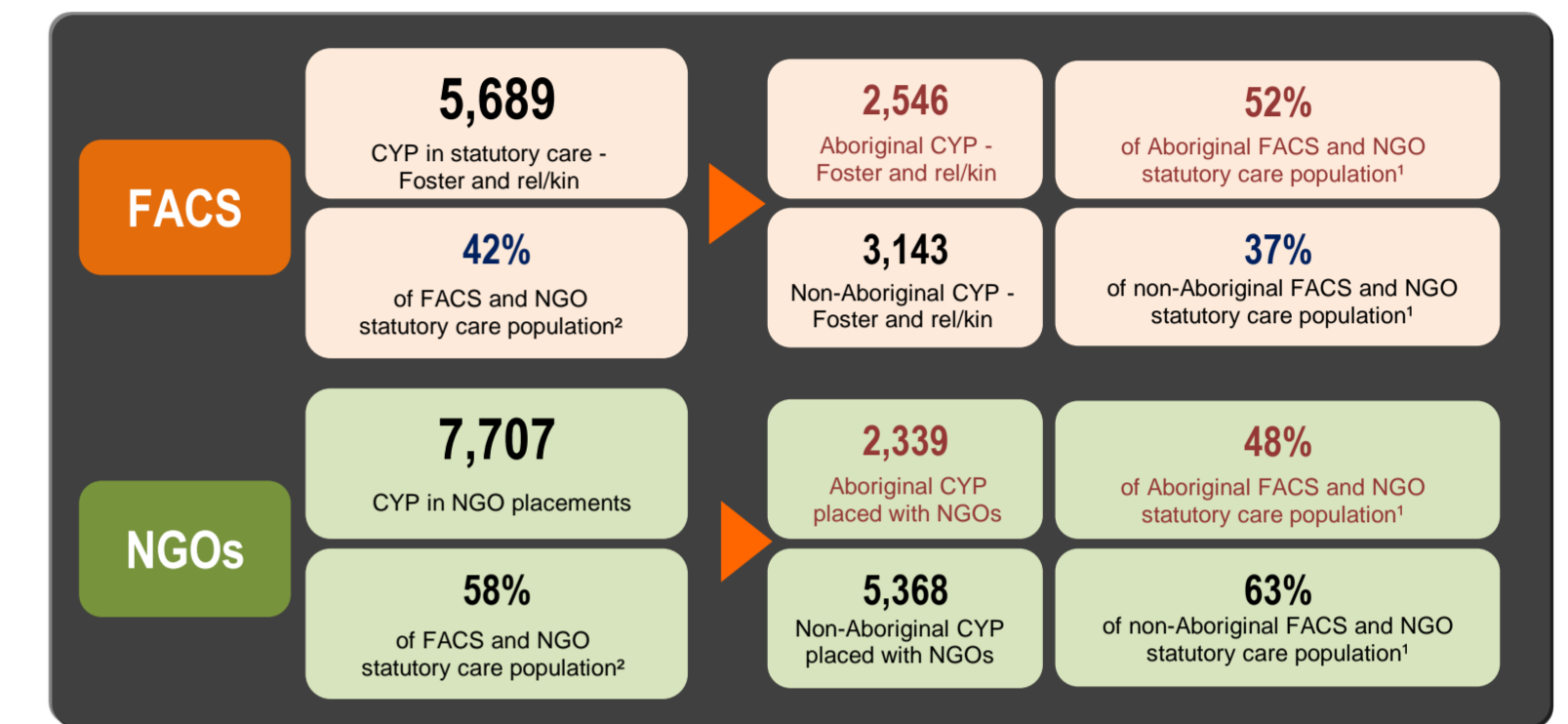
Guardianship orders as at October 2015



Total CYP in OOHC as at October 2015

FACS and NGO statutory care population¹ as at October 2015

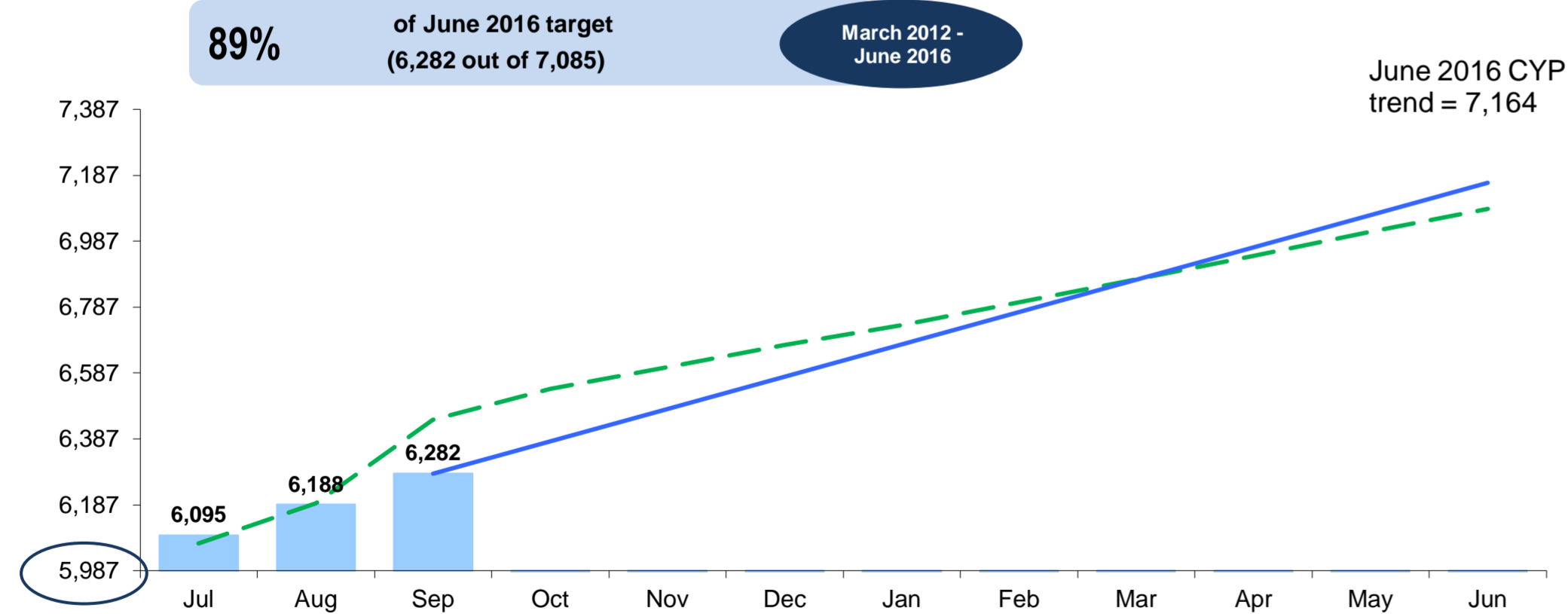
= 13,396



1 and 2. Includes CYP in FACS - Stat foster, FACS - Stat relative kin, NGO - Stat foster, NGO relative kin and NGO - Other.

OOHC and Transition Dashboard 2015/16 - New South Wales September 2015

CYP transitioned by month - Cumulative from March 2012

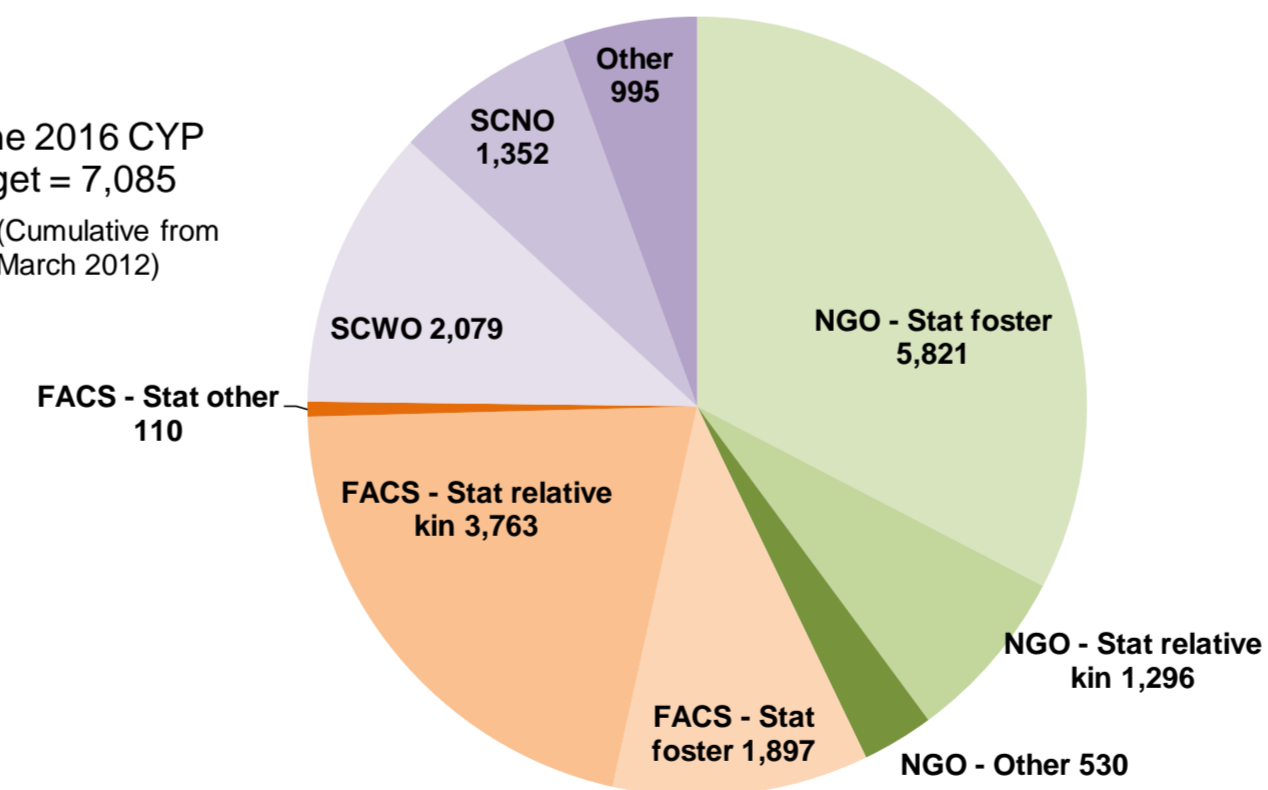


17,843

Total OOHC population as at September 2015

2,452

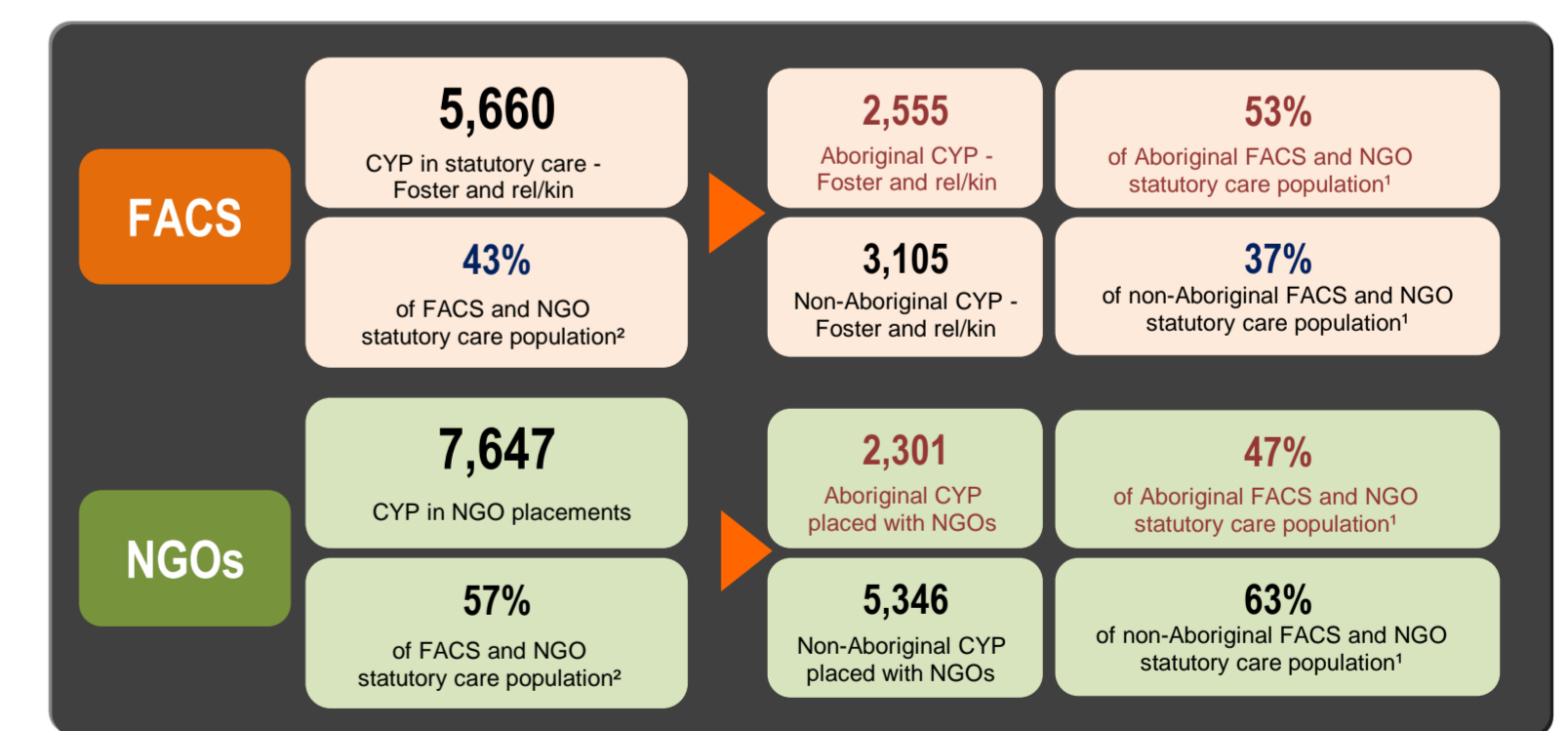
Guardianship orders as at September 2015



Total CYP in OOHC as at September 2015

FACS and NGO statutory care population¹ as at September 2015

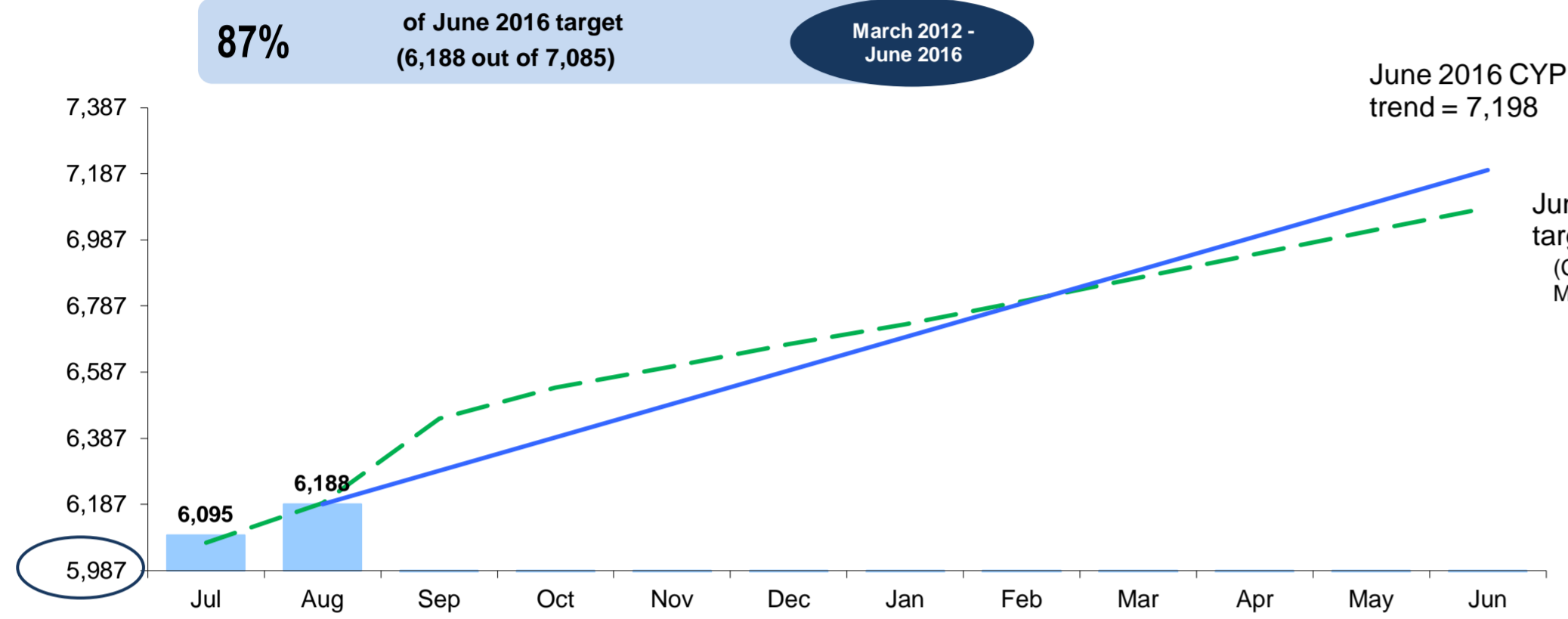
= 13,307



1 and 2. Includes CYP in FACS - Stat foster, FACS - Stat relative kin, NGO - Stat foster, NGO relative kin and NGO - Other.

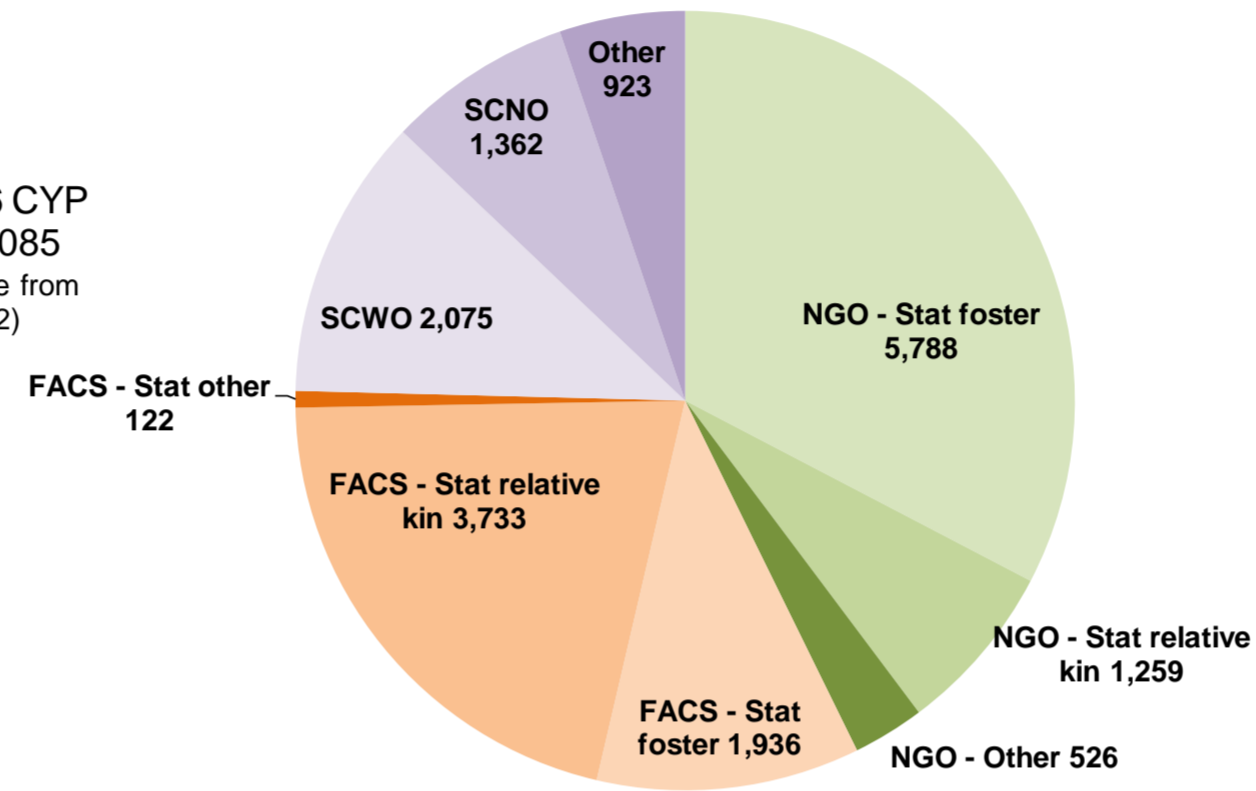
OOHC and Transition Dashboard 2015/16 - New South Wales August 2015

CYP transitioned by month - Cumulative from March 2012



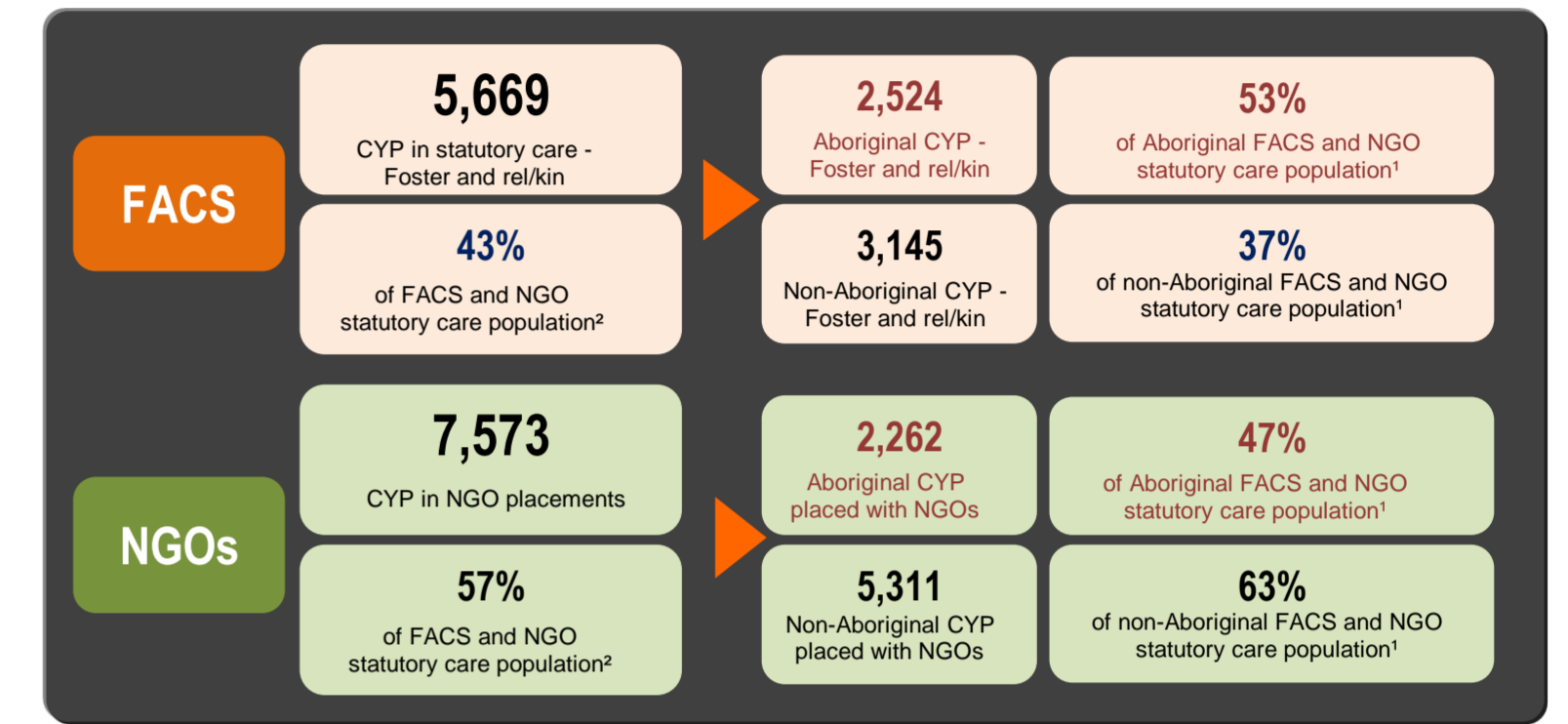
17,724
Total OOHC population as at August 2015

2,438
Guardianship orders as at August 2015



Total CYP in OOHC as at August 2015

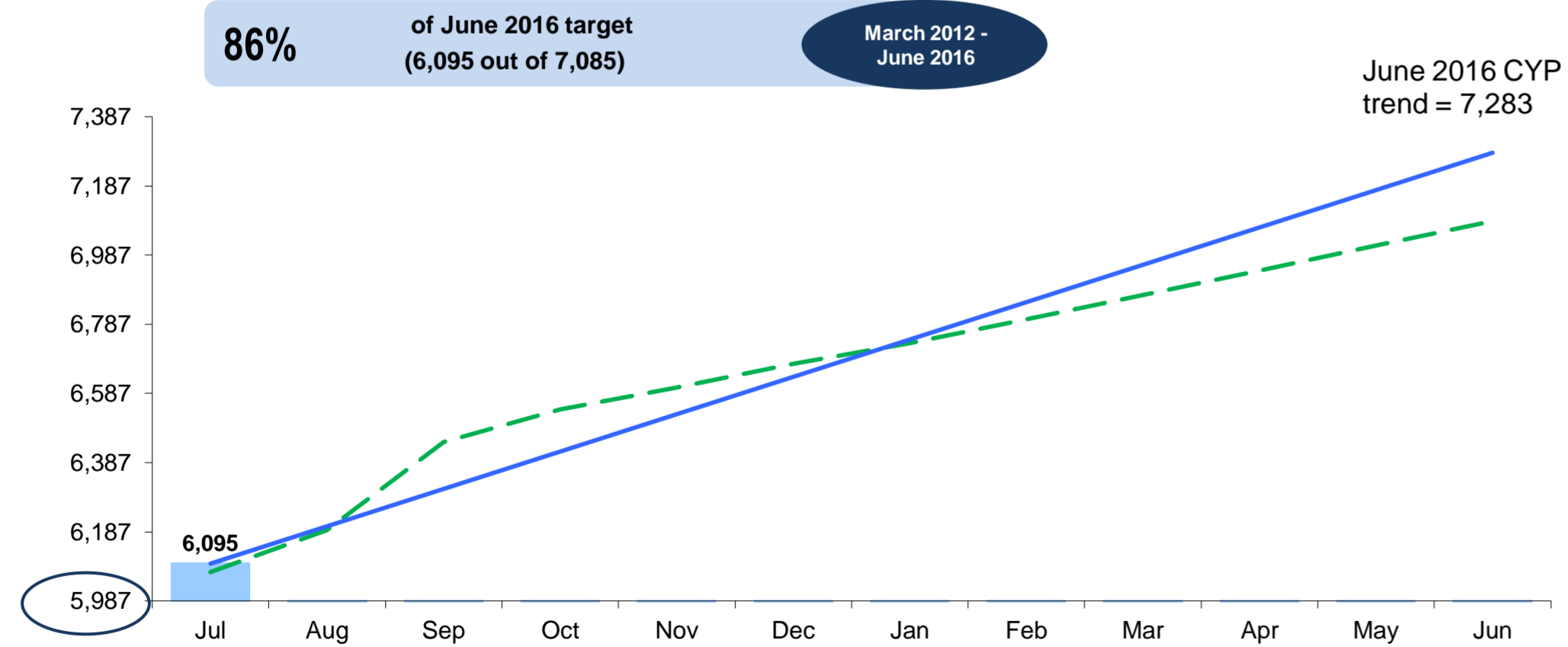
FACS and NGO statutory care population¹ as at August 2015 = 13,242



¹ and ². Includes CYP in FACS - Stat foster, FACS - Stat relative kin, NGO - Stat foster, NGO relative kin and NGO - Other.

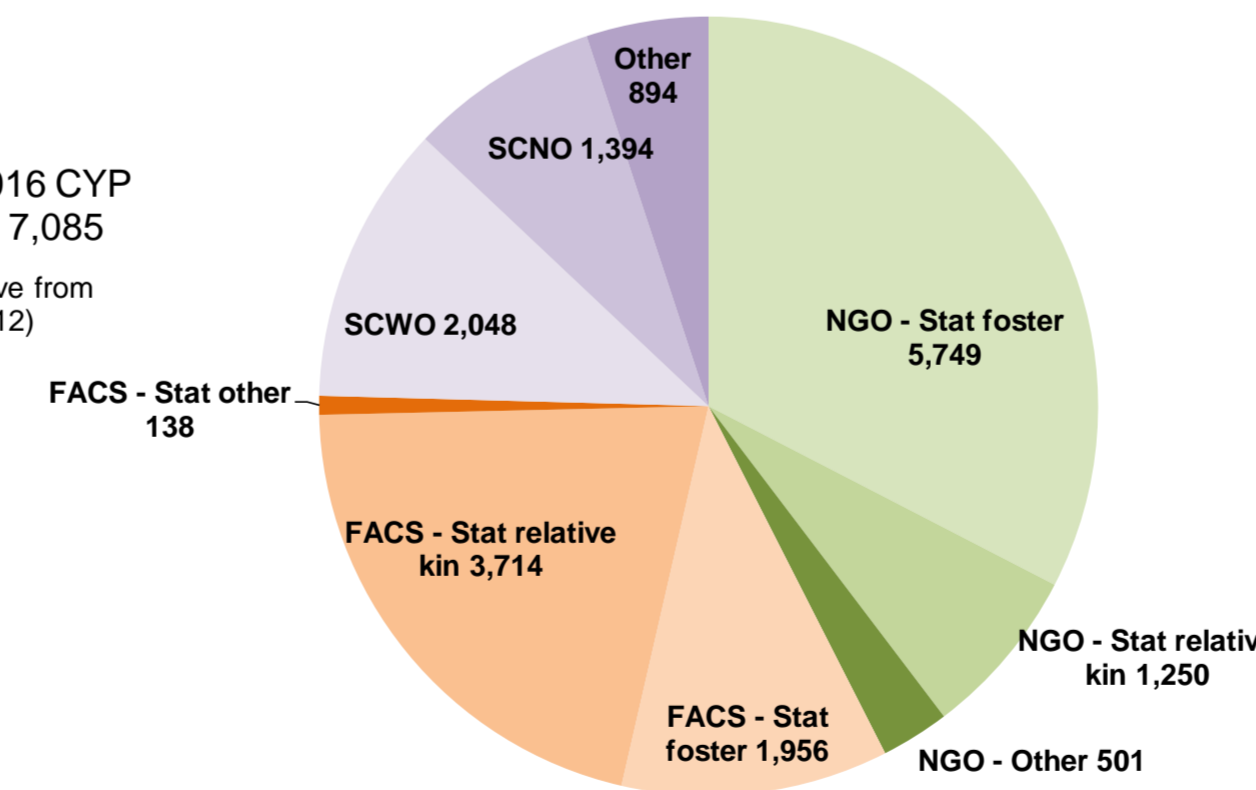
OOHC and Transition Dashboard 2015/16 - New South Wales July 2015

CYP transitioned by month - Cumulative from March 2012



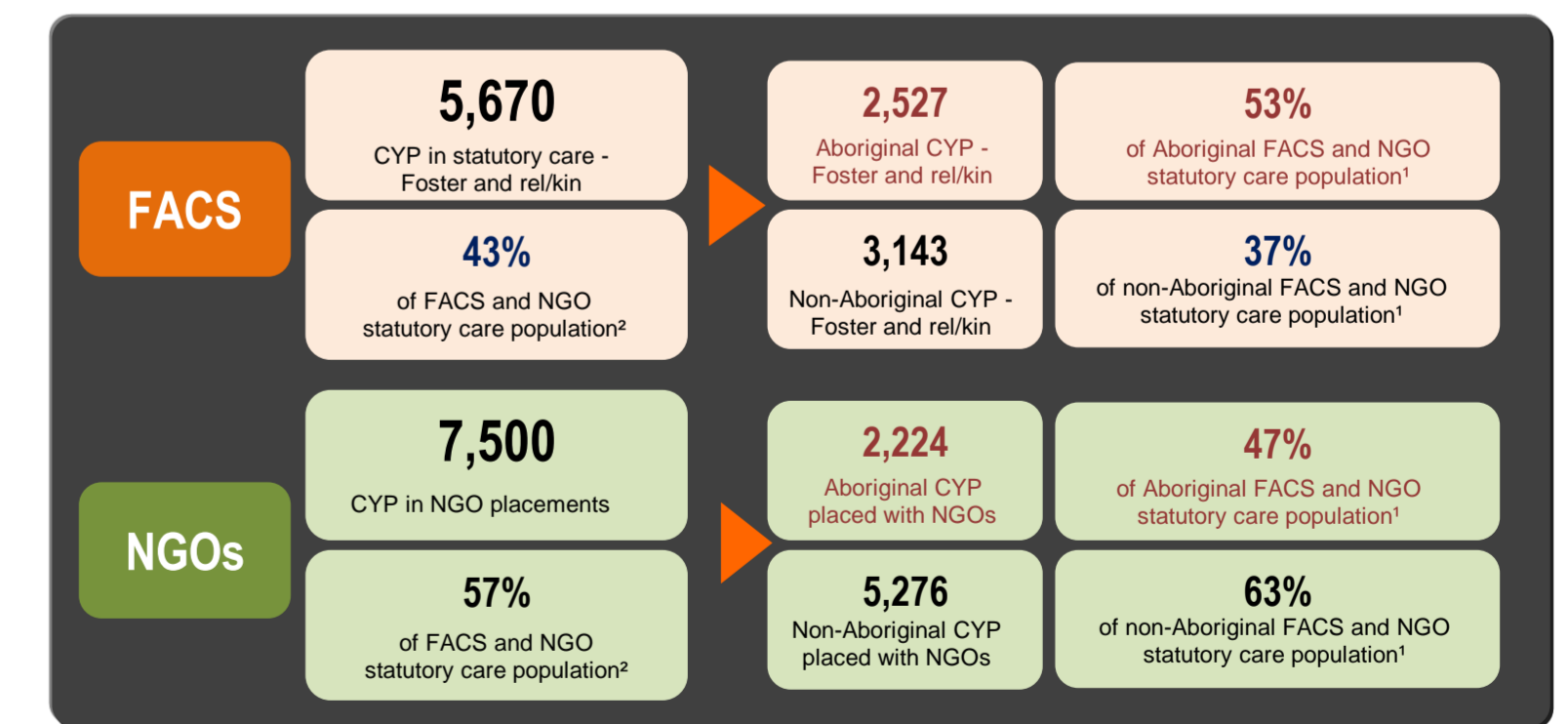
17,644
Total OOHC population as at July 2015

2,434
Guardianship orders as at July 2015



Total CYP in OOHC as at July 2015

FACS and NGO statutory care population¹ as at July 2015 = 13,170



¹ and ². Includes CYP in FACS - Stat foster, FACS - Stat relative kin, NGO - Stat foster, NGO relative kin and NGO - Other.