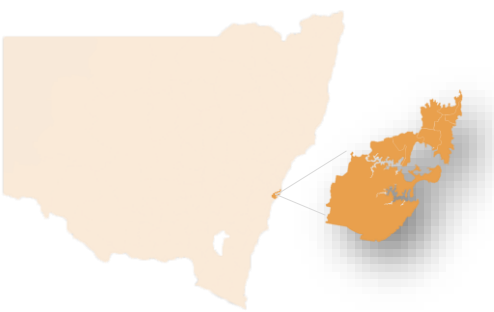


TFM Family Investment model



How to interpret this information pack

Page 2

presents a snapshot of information for the **South Eastern Sydney** FACS district coming out of TFM's Investment model.

The information is disaggregated by three groups of vulnerable children and young people born in the

South Eastern Sydney:

- Young children aged 0 to 5
- Children aged under 15 and affected by mental illness
- Children and young people aged 15 to 18 and affected by mental illness.

The final column on page 2 presents the proportion of the vulnerable children in each group who have experienced each of five indicators strongly associated with poorer outcomes in later life.

Page 3

presents the projected outcomes for **South Eastern Sydney** children and young people in each vulnerable group, by the number of indicators they have experienced which are associated with poorer outcomes later in life. The projected outcomes are compared against the average across all NSW children and young people in the same age bracket and expressed as a multiplier (e.g. 1.5x).

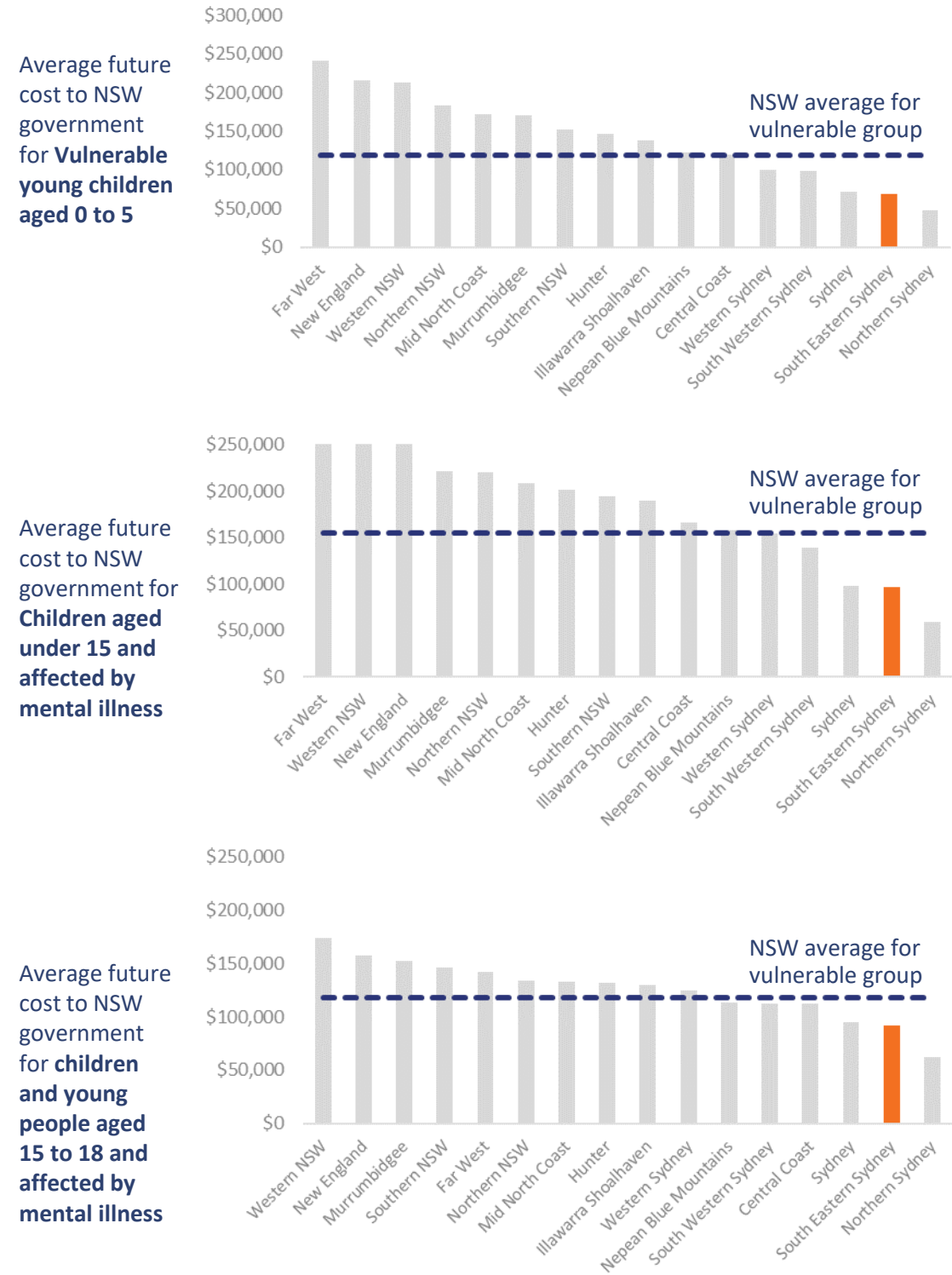
Page 3 also presents outcomes for all children and young people classed as vulnerable in **South Eastern Sydney** – shaded in blue.

These indicators differ depending on the vulnerable group, however the **consistent finding is that the more vulnerable indicators a child has experience with, the more they are expected to interact with the criminal justice system, social housing, child protection and mental health services.**

Page 4

looks at vulnerable groups in the LGA/s of the **South Eastern Sydney**. It shows, for each vulnerable group: the number of children and young people in the relevant age bracket, the number in the vulnerable group, the proportion (%) of children and young people classed as vulnerable, and the proportion (%) of children and young people in the vulnerable group who identify as Aboriginal.

Key findings for the **South Eastern Sydney** FACS district



Key insights for vulnerable young children aged 0 to 5 in **South Eastern Sydney**

- **2nd lowest out of 16** in estimated future cost to NSW government.
- **21%** of children aged 0 to 5 belong to this vulnerable group (2nd lowest out of 16 FACS districts).
- Projected outcomes for the vulnerable group are generally better than the NSW average for this group, e.g. 22% of the vulnerable group are expected to have a ROSH report in the future compared to 34% for the NSW average for this group.

Key insights for children aged under 15 and affected by mental illness in **South Eastern Sydney**

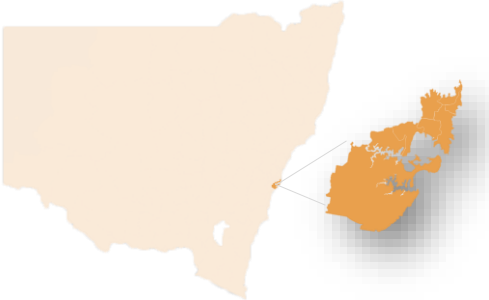
- **2nd lowest out of 16** in estimated future cost to NSW government
- **10%** of children aged under 15 belong to this vulnerable group (3rd lowest out of 16 FACS districts).
- Projected outcomes for the vulnerable group are generally better than the NSW average for this group, e.g. 18% of the vulnerable group are expected to interact with the justice system in the future compared to 25% for the NSW average for this group.

Key insights for children and young people aged 15 to 18 and affected by mental health in **South Eastern Sydney**

- **2nd lowest out of 16** in estimated future cost to NSW government
- **11%** of children and young people aged 15 to 18 belong to this vulnerable group (4th lowest out of 16 FACS districts).
- Projected outcomes for the vulnerable group are generally better than the NSW average for this group, e.g. 9% of males in the vulnerable group are expected to enter custody in the future compared to 13% for the NSW average for this group.

Vulnerable groups by FACS District:

South Eastern Sydney



Their Futures Matter is focusing on **three vulnerable groups** in NSW

We look at these groups of vulnerable children and young people born in the FACS District of **South Eastern Sydney**

We have identified, for each vulnerable group, **five indicators** associated with these children having high service usage and poorer outcomes later in life

Young children (0 to 5)



Children aged 5 or younger at 30 June 2017 with one or more of the following:

- 1 or more parental risk factors
- 2 or more perinatal risk factors
- Assessment as ROSH+

There are **14,747** children in South Eastern Sydney in the vulnerable young children group.

That's about

1 in 5     

South Eastern Sydney children aged 0 to 5.

On average, these children are estimated to **cost the NSW govt \$68K** each for the key human services they use up to age 40



This is **1.1x** the average cost for all NSW children aged 0-5

Indicators for young children (0-5)

Proportion of vulnerable group with indicator

Parents have interacted with justice system	17%
Mother smoked during pregnancy	12%
Child had concern report	15%
Mother aged 21 and under at childbirth	5%
Parents have been in social housing	5%

Children aged under 15 and affected by mental illness



Children under 15 years at 30 June 2017 with one or more of the following:

- Use of NSW mental health services (hospital or ambulatory)
- Parental use of NSW mental health services (hospital or ambulatory)

There are **10,782** children in South Eastern Sydney in the children aged under 15 and affected by mental illness group.

That's about

1 in 10     
    

South Eastern Sydney children aged under 15.

On average, these children are estimated to **cost the NSW govt \$96K** each for the key human services they use up to age 40



This is **1.7x** the average cost for all NSW children aged under 15

Indicators for mental health: children and young adolescents under 15

Proportion of vulnerable group with indicator

Child had concern report	24%
Mother smoked during pregnancy	12%
Parents have interacted with justice system	16%
Mother aged 21 and under at childbirth	6%
Parents have been in social housing	9%

Children and young people aged 15 to 18 and affected by mental illness



Children and young people (C/YP) between 15 and 18 years at 30 June 2017 with one or more of the following:

- Use of NSW mental health services (hospital or ambulatory)
- Parental use of NSW mental health services (hospital or ambulatory)

There are **3,167** C/YP in South Eastern Sydney in the C/YP aged 15 to 18 and affected by mental illness group.

That's about

1 in 9    
    

South Eastern Sydney C/YP aged 15 to 18.

On average, these C/YP are estimated to **cost the NSW govt \$92k** each for the key human services they use up to age 40



This is **2.3x** the average cost for all NSW C/YP aged 15-18

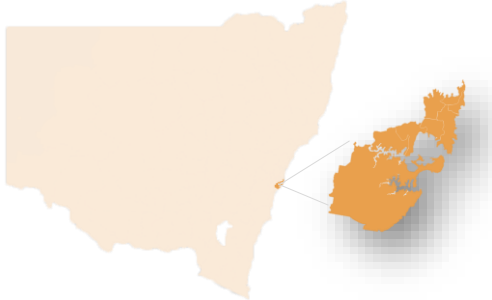
Indicators for mental health: C/YP (15-18)

Proportion of vulnerable group with indicator

NAPLAN Year 7 band less than 6	33%
Had concern report in the last three years	27%
Hospital admission in last three years	30%
Family have been in social housing	16%
Has appeared in court	5%

Vulnerable groups by FACS District:

South Eastern Sydney



Vulnerable young children aged 0 to 5

Children under 15 and affected by mental illness

Children and young people aged 15 to 18 affected by mental illness

Projected outcomes

	Number of indicators* associated with poorer outcomes						Number of indicators* associated with poorer outcomes						Number of indicators* associated with poorer outcomes					
	0	1	2	3	4 or 5	All vulnerable	0	1	2	3	4 or 5	All vulnerable	0	1	2	3	4 or 5	All vulnerable
Number of children and young people in district	9,619	3,364	985	508	270	14,747	6,756	2,164	904	577	381	10,782	1,131	1,074	588	259	115	3,167
	14%	5%	1%	1%	0%	21%	6%	2%	1%	1%	0%	10%	4%	4%	2%	1%	0%	11%
% Who identify as Aboriginal	1%	5%	19%	33%	56%	6%	1%	4%	16%	30%	53%	7%	2%	4%	12%	24%	52%	8%
Estimated future cost to NSW govt	0.6x \$35,387	1.0x \$62,232	2.7x \$158,050	4.9x \$291,768	9.6x \$568,290	\$68,287	0.7x \$37,430	1.5x \$80,930	3.5x \$193,553	6.3x \$352,349	10.8x \$598,913	\$95,950	0.6x \$23,148	1.3x \$53,644	3.0x \$120,107	6.6x \$262,282	15.2x \$607,810	\$92,201
% Expected to have a ROSH report in future	0.6x 11%	1.8x 32%	2.9x 51%	3.9x 69%	4.9x 87%	22%	0.9x 13%	2.5x 37%	3.7x 54%	4.8x 70%	5.7x 83%	26%	0.7x 2%	1.6x 4%	4.2x 11%	6.5x 17%	9.1x 23%	6%
% Expected to interact with the justice system	0.8x 11%	1.1x 16%	1.8x 25%	2.6x 36%	3.8x 52%	14%	0.8x 12%	1.4x 20%	2.1x 30%	3.0x 42%	4.0x 56%	18%	0.8x 10%	1.3x 16%	2.3x 29%	4.0x 51%	5.5x 69%	21%
% of males expected to enter custody	0.5x 2%	1.0x 4%	2.6x 10%	4.8x 19%	8.5x 35%	4%	0.5x 2%	1.6x 7%	3.3x 14%	5.8x 24%	9.1x 38%	6%	0.5x 2%	1.1x 4%	3.3x 13%	7.9x 31%	16.3x 63%	9%
% Expected to use NSW mental health services	1.0x 18%	1.3x 25%	1.9x 35%	2.5x 47%	3.3x 61%	22%	1.5x 28%	2.1x 39%	2.5x 46%	3.0x 55%	3.5x 64%	34%	2.0x 26%	2.8x 36%	3.9x 50%	4.3x 57%	5.1x 66%	38%
% Expected to complete the HSC in NSW	1.1x 75%	0.9x 63%	0.7x 48%	0.5x 36%	0.4x 24%	68%	1.2x 76%	1.0x 65%	0.7x 48%	0.5x 36%	0.4x 23%	67%	1.3x 81%	1.1x 66%	0.7x 42%	0.4x 28%	0.2x 12%	62%
% Expected to use social housing as adults	0.3x 1%	1.0x 2%	4.3x 11%	8.2x 21%	11.9x 30%	3%	0.3x 1%	1.6x 4%	5.8x 16%	8.7x 23%	11.1x 30%	5%	0.2x 1%	1.6x 5%	4.3x 14%	7.7x 25%	14.0x 45%	8%
% of females expected to become young mothers	0.6x 3%	1.0x 5%	2.2x 10%	3.7x 17%	6.9x 32%	5%	0.6x 3%	1.1x 5%	2.3x 11%	4.0x 19%	6.7x 32%	6%	0.6x 3%	1.0x 5%	2.3x 11%	4.7x 22%	7.0x 33%	8%

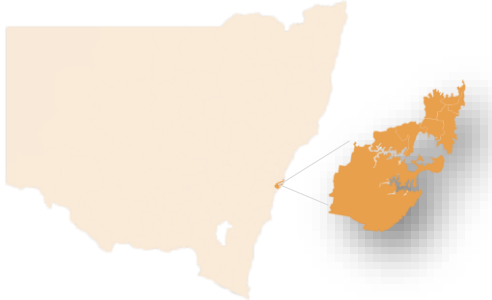
*The specific risk indicators for each vulnerable group are defined on page 2.

1.5x
\$45,000

The multipliers shown in this table compare the projected outcome to the NSW average for all children in the age group (i.e. vulnerable and non-vulnerable children).

Vulnerable groups by FACS District:

South Eastern Sydney – by Local Government Area/s



Vulnerable young children aged 0 -5

Children under 15 and affected by mental illness

Children and young people aged 15 to 18 affected by mental illness

	Number of C/YP aged under 5 in LGA	Number of vulnerable C/YP aged under 5 in LGA	Proportion (%) of vulnerable C/YP aged under 5 in LGA	Proportion (%) who identify as Aboriginal	Number of C/YP aged under 15 in LGA	Number of C/YP aged under 15 affected by mental illness in LGA	Proportion (%) of C/YP aged under 15 affected by mental illness in LGA	Proportion (%) who identify as Aboriginal	Number of C/YP aged 15-18 in LGA	Number of C/YP aged 15-18 affected by mental illness in LGA	Proportion (%) of C/YP aged 15-18 affected by mental illness in LGA	Proportion (%) who identify as Aboriginal
Bayside	12,324	3,016	24%	5%	19,493	2,039	10%	6%	4,721	587	12%	9%
Georges River	10,493	2,491	24%	2%	17,888	1,660	9%	4%	5,024	533	11%	5%
Randwick	10,310	1,901	18%	10%	16,173	1,794	11%	10%	3,596	543	15%	11%
Sutherland Shire	15,244	3,492	23%	4%	28,563	2,590	9%	5%	9,417	884	9%	6%
Waverley*	5,789	960	17%	2%	9,060	742	8%	2%	1,696	191	11%	NA
Woollahra*	3,808	617	16%	1%	6,071	495	8%	2%	1,384	123	9%	NA
Sydney**	10,643	2,269	21%	11%	14,270	1,461	10%	13%	1,949	307	16%	20%

* Some cells have been set to NA to minimise the risk of re-identification. These cells either have a count of less than 5 people or have the lowest number of people in the FACS District in the remaining LGAs.

** Sydney also belongs to Sydney FACS district