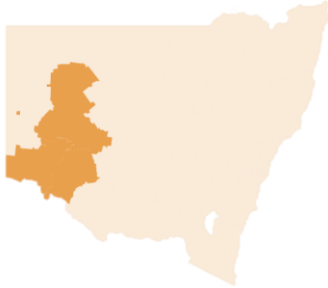


# TFM Family Investment model



## How to interpret this information pack

### Page 2

Page 2 presents a snapshot of information for the **Far West** FACS district coming out of TFM's Investment model.

The information is disaggregated by three groups of vulnerable children and young people born in the **Far West**:

- Young children aged 0 to 5
- Children aged under 15 and affected by mental illness
- Children and young people aged 15 to 18 and affected by mental illness.

The final column on page 2 presents the proportion of the vulnerable children in each group who have experienced each of five indicators strongly associated with poorer outcomes in later life.

### Page 3

Page 3 presents the projected outcomes for **Far West** children and young people in each vulnerable group, by the number of indicators they have experienced which are associated with poorer outcomes later in life. The projected outcomes are compared against the average across all NSW children and young people in the same age bracket and expressed as a multiplier (e.g. 1.5x).

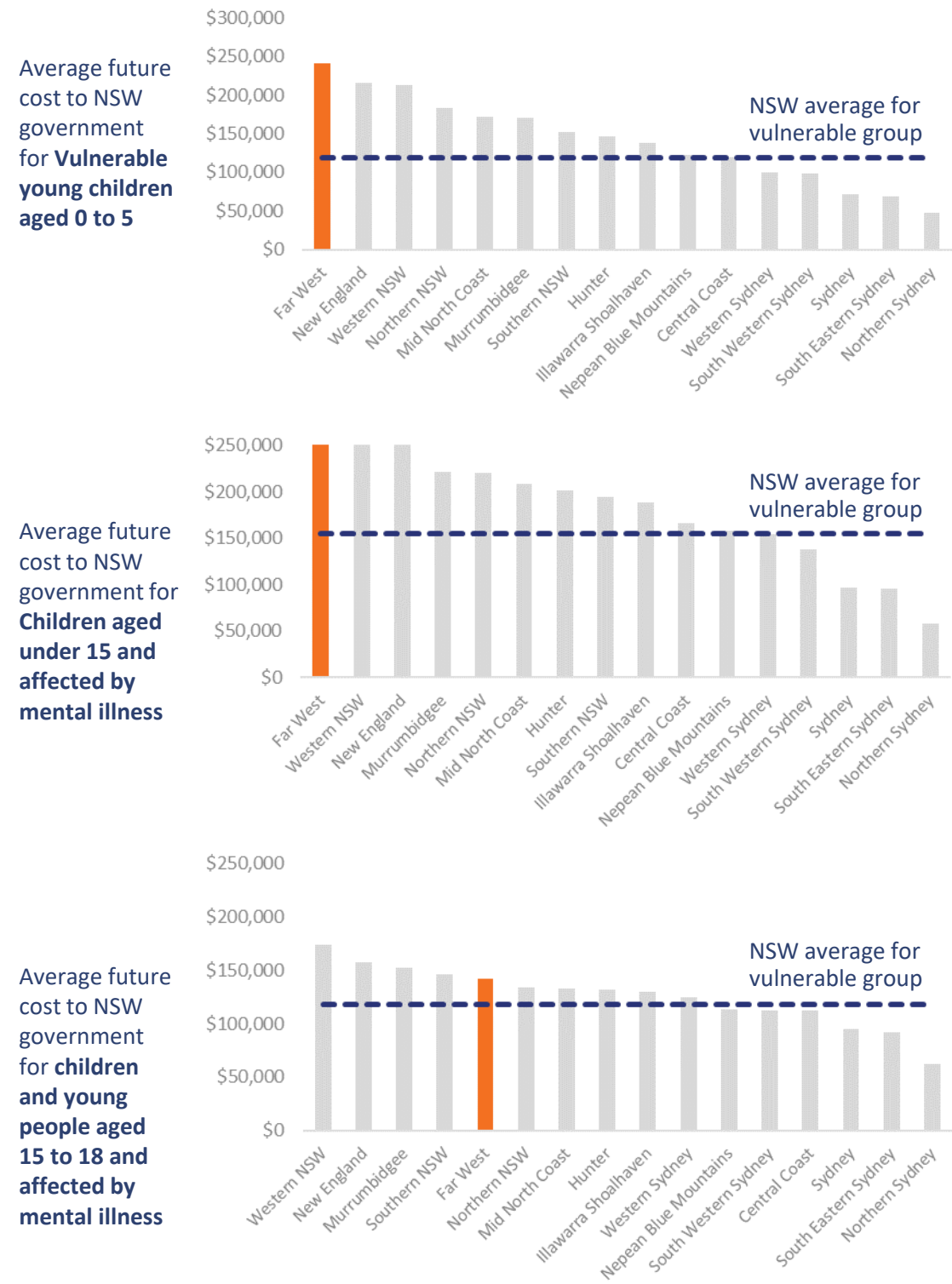
Page 3 also presents outcomes for all children and young people classed as vulnerable in **Far West** – shaded in blue.

These indicators differ depending on the vulnerable group, however the **consistent finding is that the more vulnerable indicators a child has experience with, the more they are expected to interact with the criminal justice system, social housing, child protection and mental health services.**

### Page 4

Page 4 looks at vulnerable groups in the LGA/s of the **Far West**. It shows, for each vulnerable group: the number of children and young people in the relevant age bracket, the number in the vulnerable group, the proportion (%) of children and young people classed as vulnerable, and the proportion (%) of children and young people in the vulnerable group who identify as Aboriginal.

## Key findings for the **Far West** FACS district



### Key insights for vulnerable young children aged 0 to 5 in **Far West**

- **The highest out of 16** in estimated future cost to NSW government.
- **51%** of children aged 0 to 5 belong to this vulnerable group (the highest out of 16 FACS districts).
- Projected future outcomes for the vulnerable group are relatively poor and are generally the worst out of all 16 FACS districts. E.g. 51% of the vulnerable group are expected to have a ROSH report in the future compared to the NSW average of 34% for this group.

### Key insights for children aged under 15 and affected by mental illness in **Far West**

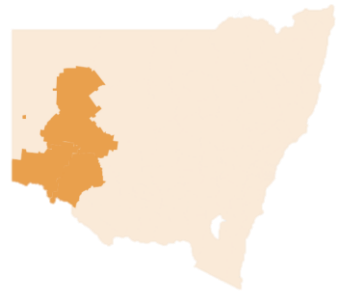
- **The highest out of 16** in estimated future cost to NSW government
- **39%** of children aged under 15 belong to this vulnerable group (the highest out of 16 FACS districts).
- Projected future outcomes for the vulnerable group are relatively poor and are generally the worst out of all 16 FACS districts. E.g. 39% of the vulnerable group are expected to interact with the justice system in the future compared to the NSW average of 25% for this group.

### Key insights for children and young people aged 15 to 18 and affected by mental health in **Far West**

- **5<sup>th</sup> highest out of 16** in estimated future cost to NSW government
- **44%** of children and young people aged 15 to 18 belong to this vulnerable group (the highest out of 16 FACS districts).
- Projected future outcomes for the vulnerable group are relatively poor and are generally the worst out of all 16 FACS districts. The one exception to this is the proportion of vulnerable group that are expected to use social housing as an adult (7%), where **Far West** is one of the lowest across all 16 FACS districts.

# Vulnerable groups by FACS District:

## Far West



Their Futures Matter is focusing on **three vulnerable groups** in NSW

We look at these groups of vulnerable children and young people born in the FACS District of **Far West**

We have identified, for each vulnerable group, **five indicators** associated with these children having high service usage and poorer outcomes later in life

### Young children (0 to 5)



Children aged 5 or younger at 30 June 2017 with one or more of the following:

- 1 or more parental risk factors
- 2 or more perinatal risk factors
- Assessment as ROSH+

There are **622** children in Far West in the vulnerable young children group.

That's about

**1 in 2**



Far West children aged 0 to 5.

On average, these children are estimated to **cost the NSW govt \$240k** each for the key human services they use up to age 40



This is **4.0x** the average cost for all NSW children aged 0-5

#### Indicators for young children (0-5)

Proportion of vulnerable group with indicator

|   |            |
|---|------------|
| Parents have interacted with justice system | <b>44%</b> |
| Mother smoked during pregnancy              | <b>54%</b> |
| Child had concern report                    | <b>39%</b> |
| Mother aged 21 and under at childbirth      | <b>24%</b> |
| Parents have been in social housing         | <b>3%</b>  |

### Children aged under 15 and affected by mental illness



Children under 15 years at 30 June 2017 with one or more of the following:

- Use of NSW mental health services (hospital or ambulatory)
- Parental use of NSW mental health services (hospital or ambulatory)

There are **1,070** children in Far West in the children aged under 15 and affected by mental illness group.

That's about

**1 in 3**



Far West children aged under 15.

On average, these children are estimated to **cost the NSW govt \$265k** each for the key human services they use up to age 40



This is **4.8x** the average cost for all NSW children aged under 15

#### Indicators for mental health: children and young adolescents under 15

Proportion of vulnerable group with indicator

|   |            |
|---|------------|
| Child had concern report                    | <b>50%</b> |
| Mother smoked during pregnancy              | <b>53%</b> |
| Parents have interacted with justice system | <b>42%</b> |
| Mother aged 21 and under at childbirth      | <b>30%</b> |
| Parents have been in social housing         | <b>6%</b>  |

### Children and young people aged 15 to 18 and affected by mental illness



Children and young people (C/YP) between 15 and 18 years at 30 June 2017 with one or more of the following:

- Use of NSW mental health services (hospital or ambulatory)
- Parental use of NSW mental health services (hospital or ambulatory)

There are **369** C/YP in Far West in the C/YP aged 15 to 18 and affected by mental illness group.

That's about

**1 in 2**



Far West C/YP aged 15 to 18.

On average, these C/YP are estimated to **cost the NSW govt \$142k** each for the key human services they use up to age 40



This is **3.6x** the average cost for all NSW C/YP aged 15-18

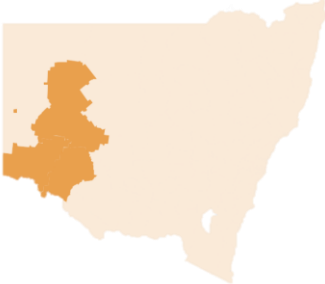
#### Indicators for mental health: C/YP (15 to 18)

Proportion of vulnerable group with indicator

|  |            |
|--|------------|
| NAPLAN Year 7 band less than 6             | <b>73%</b> |
| Had concern report in the last three years | <b>39%</b> |
| Hospital admission in last three years     | <b>21%</b> |
| Family have been in social housing         | <b>15%</b> |
| Has appeared in court                      | <b>7%</b>  |

# Vulnerable groups by FACS District:

## Far West



### Vulnerable young children aged 0 to 5

### Children under 15 and affected by mental illness

### Children and young people aged 15 to 18 affected by mental illness

Projected outcomes

|   | Number of indicators* associated with poorer outcomes |                   |                   |                   |                    |                | Number of indicators* associated with poorer outcomes |                   |                   |                   |                    |                | Number of indicators* associated with poorer outcomes |                  |                   |                   |                    |                |
|---|---|-------------------|-------------------|-------------------|--------------------|----------------|---|-------------------|-------------------|-------------------|--------------------|----------------|---|------------------|-------------------|-------------------|--------------------|----------------|
|   | 0   | 1                 | 2                 | 3                 | 4 or 5             | All vulnerable | 0   | 1                 | 2                 | 3                 | 4 or 5             | All vulnerable | 0   | 1                | 2                 | 3                 | 4 or 5             | All vulnerable |
| Number of children and young people in district | 109   | 197               | 169               | 104               | 42                 | 622            | 180   | 272               | 299               | 217               | 101                | 1,070          | 66  | 133              | 99                | 44                | 26                 | 369            |
|   | 9%  | 16%               | 14%               | 9%                | 3%                 | 51%            | 7%  | 10%               | 11%               | 8%                | 4%                 | 39%            | 8%  | 16%              | 12%               | 5%                | 3%                 | 44%            |
| % Who identify as Aboriginal                    | NA  | NA                | 56%               | 49%               | 77%                | 37%            | 9%  | 32%               | 54%               | 60%               | 79%                | 44%            | 19%   | 43%              | 59%               | NA                | NA                 | 49%            |
| Estimated future cost to NSW govt               | 0.9x<br>\$53,617                                      | 2.2x<br>\$128,250 | 4.6x<br>\$273,029 | 6.8x<br>\$403,486 | 12.0x<br>\$715,801 | \$240,296      | 0.9x<br>\$48,807                                      | 2.3x<br>\$127,470 | 4.7x<br>\$260,436 | 7.9x<br>\$440,090 | 11.9x<br>\$659,979 | \$265,196      | 1.0x<br>\$38,624                                      | 1.4x<br>\$56,052 | 3.5x<br>\$141,583 | 6.2x<br>\$248,834 | 16.4x<br>\$652,769 | \$141,652      |
| % Expected to have a ROSH report in future      | 1.3x<br>22%   | 2.0x<br>36%       | 3.6x<br>63%       | 4.2x<br>74%       | 5.3x<br>93%        | 51%            | 1.2x<br>18%   | 2.5x<br>37%       | 4.1x<br>60%       | 5.2x<br>77%       | 6.0x<br>88%        | 53%            | 1.6x<br>4%  | 1.4x<br>4%       | 8.2x<br>21%       | 8.8x<br>22%       | 10.7x<br>27%       | 12%            |
| % Expected to interact with the justice system  | 1.3x<br>17%   | 1.9x<br>26%       | 2.9x<br>40%       | 3.4x<br>47%       | 4.9x<br>68%        | 35%            | 1.2x<br>17%   | 2.1x<br>29%       | 2.9x<br>41%       | 3.8x<br>54%       | 4.9x<br>69%        | 39%            | 1.2x<br>15%   | 1.5x<br>19%      | 3.0x<br>38%       | 4.1x<br>52%       | 6.0x<br>76%        | 31%            |
| % of males expected to enter custody            | 0.8x<br>3%  | 3.0x<br>12%       | 6.0x<br>24%       | 8.6x<br>35%       | 13.7x<br>56%       | 21%            | 1.0x<br>4%  | 3.0x<br>13%       | 5.7x<br>24%       | 9.7x<br>41%       | 12.5x<br>52%       | 24%            | 0.7x<br>3%  | 1.5x<br>6%       | 4.7x<br>18%       | 10.0x<br>39%      | 16.7x<br>65%       | 17%            |
| % Expected to use NSW mental health services    | 1.4x<br>27%   | 2.2x<br>42%       | 3.2x<br>60%       | 3.6x<br>67%       | 4.3x<br>80%        | 51%            | 2.0x<br>37%   | 2.7x<br>50%       | 3.3x<br>61%       | 3.9x<br>72%       | 4.2x<br>76%        | 58%            | 2.3x<br>30%   | 2.8x<br>37%      | 3.8x<br>49%       | 4.2x<br>55%       | 5.6x<br>73%        | 44%            |
| % Expected to complete the HSC in NSW           | 0.8x<br>56%   | 0.6x<br>38%       | 0.4x<br>24%       | 0.3x<br>21%       | 0.2x<br>11%        | 33%            | 0.9x<br>60%   | 0.6x<br>42%       | 0.4x<br>26%       | 0.3x<br>20%       | 0.2x<br>13%        | 33%            | 1.0x<br>62%   | 0.8x<br>47%      | 0.4x<br>28%       | 0.2x<br>13%       | 0.1x<br>5%         | 37%            |
| % Expected to use social housing as adults      | 0.3x<br>1%  | 2.8x<br>7%        | 4.8x<br>12%       | 6.9x<br>17%       | 8.6x<br>22%        | 10%            | 0.4x<br>1%  | 2.5x<br>7%        | 4.0x<br>11%       | 6.4x<br>17%       | 8.3x<br>22%        | 11%            | 0.4x<br>1%  | 0.7x<br>2%       | 2.7x<br>9%        | 3.7x<br>12%       | 8.3x<br>27%        | 7%             |
| % of females expected to become young mothers   | 1.1x<br>5%  | 2.4x<br>11%       | 4.2x<br>19%       | 5.1x<br>24%       | 7.6x<br>35%        | 16%            | 1.2x<br>6%  | 2.5x<br>12%       | 4.2x<br>20%       | 5.7x<br>28%       | 9.2x<br>44%        | 19%            | 1.0x<br>4%  | 2.1x<br>10%      | 3.9x<br>18%       | 5.7x<br>27%       | 9.3x<br>44%        | 15%            |

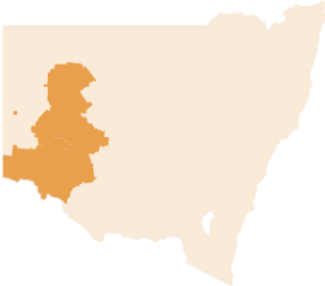
\*The specific risk indicators for each vulnerable group are defined on page 2.

1.5x  
\$45,000

The multipliers shown in this table compare the projected outcome to the NSW average for all children in the age group (i.e. vulnerable and non-vulnerable children).

# Vulnerable groups by FACS District:

## Far West – by Local Government Area/s



|                   | Vulnerable young children aged 0 -5 |   |   |   | Children under 15 and affected by mental illness |  |  |   | Children and young people aged 15 to 18 affected by mental illness |   |   |   |
|-------------------|-------------------------------------|---|---|---|--|--|--|---|--|---|---|---|
|                   | Number of C/YP aged under 5 in LGA  | Number of vulnerable C/YP aged under 5 in LGA | Proportion (%) of vulnerable C/YP aged under 5 in LGA | Proportion (%) who identify as Aboriginal | Number of C/YP aged under 15 in LGA              | Number of C/YP aged under 15 affected by mental illness in LGA | Proportion (%) of C/YP aged under 15 affected by mental illness in LGA | Proportion (%) who identify as Aboriginal | Number of C/YP aged 15-18 in LGA                                   | Number of C/YP aged 15-18 affected by mental illness in LGA | Proportion (%) of C/YP aged 15-18 affected by mental illness in LGA | Proportion (%) who identify as Aboriginal |
| Balranald *       | 8                                   | NA  | NA  | NA  | 31   | NA   | NA   | NA  | 15   | NA  | NA  | NA  |
| Broken Hill       | 1,106                               | 554   | 50%   | 33%                                       | 2,335  | 909  | 39%  | 40%                                       | 714  | 306   | 43%   | 42%                                       |
| Central Darling * | 83                                  | 58  | 70%   | 81%                                       | 219  | 101  | 46%  | 82%                                       | 53   | NA  | NA  | NA  |
| Wentworth *       | 12                                  | NA  | NA  | NA  | 124  | NA   | NA   | NA  | 56   | 30  | 54%   | 80%                                       |

\* Some cells have been set to NA to minimise the risk of re-identification. These cells either have a count of less than 5 people or have the lowest number of people in the FACS District in the remaining LGAs.