

# Southern NSW District Data Profile

Illawarra Shoalhaven  
and Southern NSW





# Contents

---

<b>Introduction</b>	<b>4</b>
<b>Demographic Data</b>	<b>7</b>
Population - Southern NSW	7
Aboriginal and Torres Strait Islander population	9
Country of birth	11
Languages spoken at home	13
Migration streams	15
<b>Children and Young People</b>	<b>16</b>
Government schools	16
Early childhood development	23
Vulnerable children and young people	28
Contact with child protection services	31
<b>Economic Environment</b>	<b>32</b>
Education	32
Employment	34
Income	36
Socio-economic advantage and disadvantage	38
<b>Social Environment</b>	<b>39</b>
Community safety and crime	39



<b>Maternal Health</b>	<b>43</b>
Teenage pregnancy	43
Smoking during pregnancy	44
Australian Mothers Index	45
<b>Disability</b>	<b>46</b>
Need for assistance with core activities	46
<b>Housing</b>	<b>47</b>
Households	47
Tenure types	48
Housing affordability	49
Social housing	51



# Introduction

---

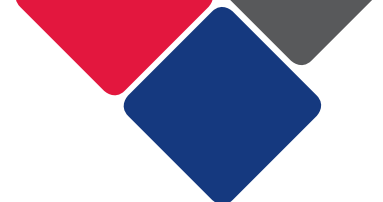
This document presents a brief data profile for the Southern NSW district. It contains a series of tables and graphs that show the characteristics of persons, families and communities. It includes demographic, housing, child development, community safety and child protection information.

Where possible, we present this information at the local government area (LGA) level. In the Southern NSW district there are seven LGAs:

- Queanbeyan-Palerang Regional
- Eurobodalla
- Bega Valley
- Goulburn Mulwaree
- Snowy Monaro Regional
- Yass Valley
- Upper Lachlan Shire

The data presented in this document is from a number of different sources, including:

- Australian Bureau of Statistics (ABS)
- Bureau of Crime Statistics and Research (BOCSAR)
- NSW Health Stats
- Australian Early Developmental Census (AEDC)
- NSW Government administrative data.



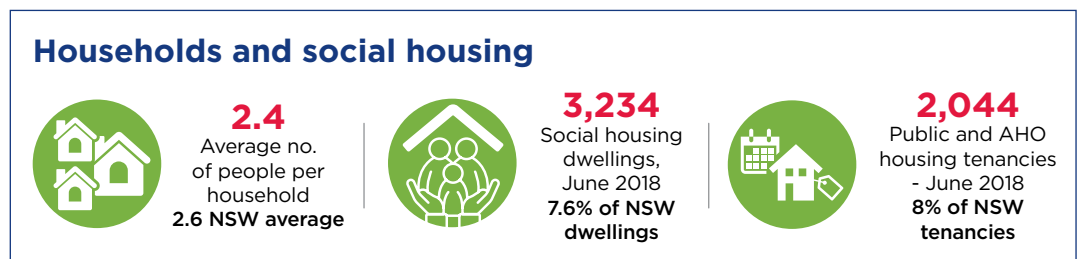
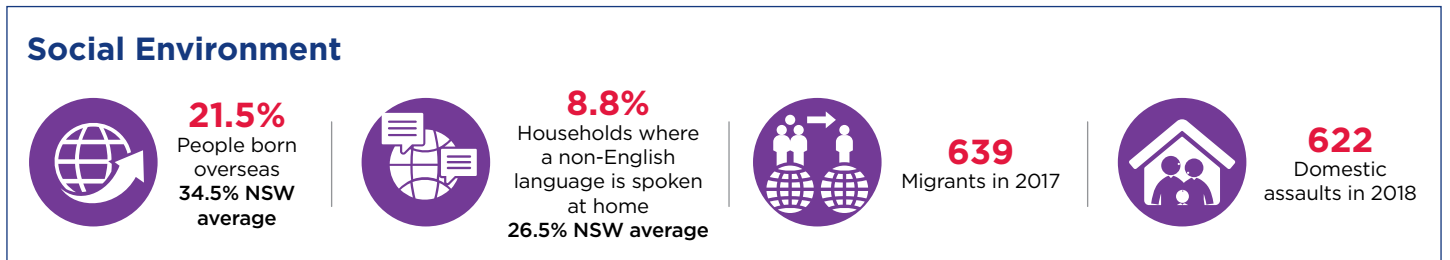
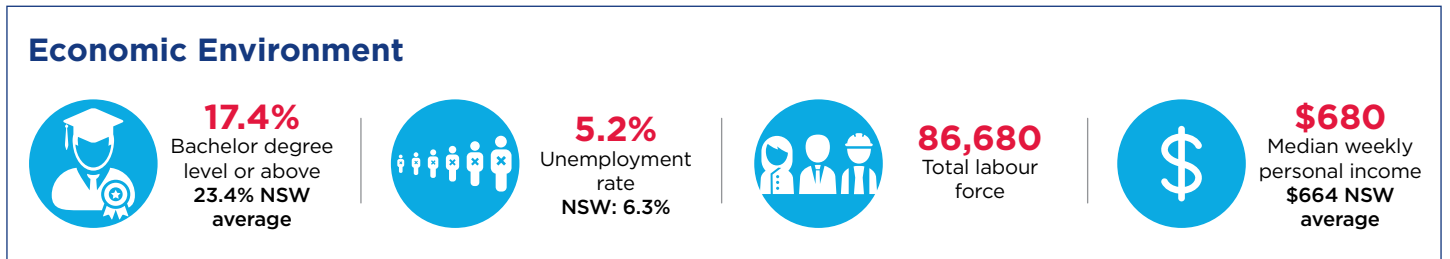
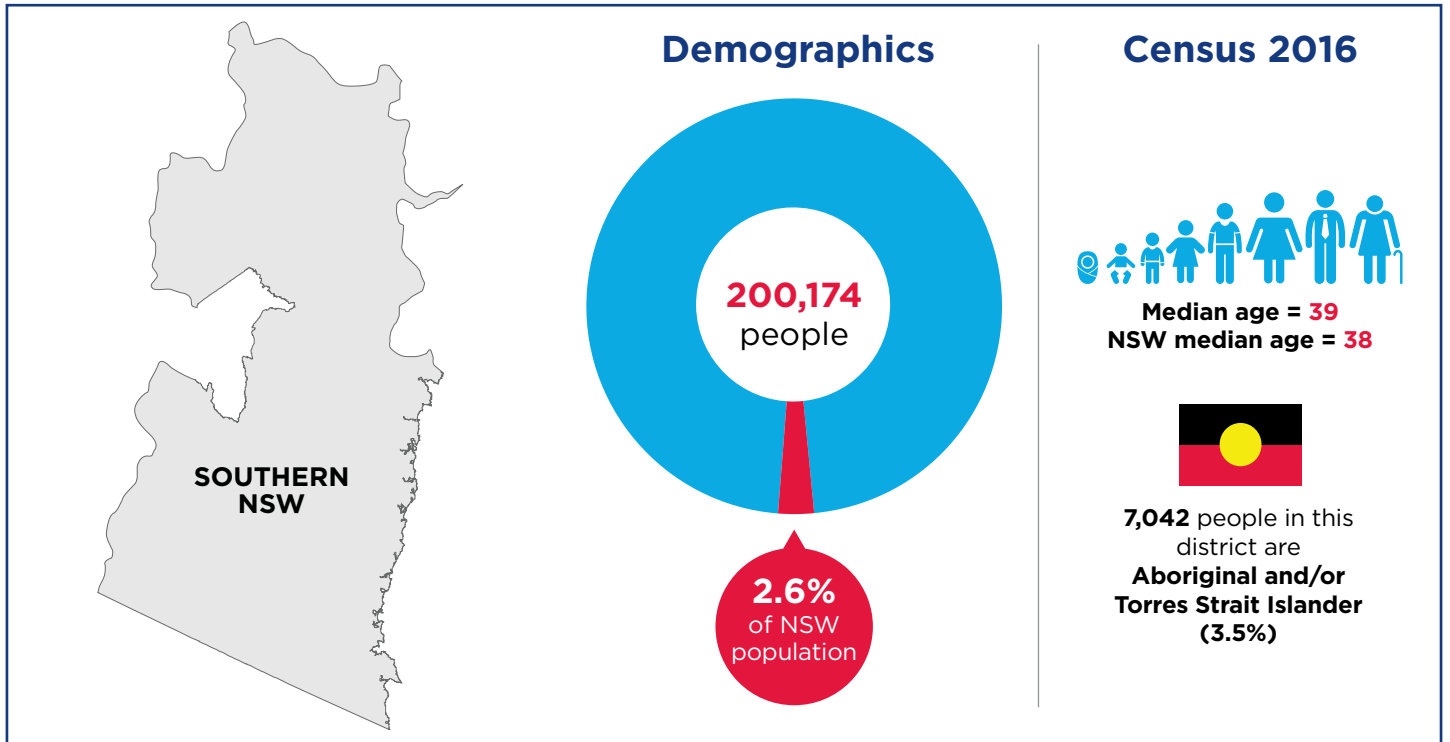
The majority of these sources are publicly available. We have provided source statements for each table and graph. This tells you where the data comes from and where you can find more information.

Please note, the information in the original sources may change as authors (e.g. ABS, NSW Healthstats) update the data. As such, we have also recorded the date we accessed the information.

If you would like additional suburb-level and Aboriginal and Torres Strait Islander specific data, the following sources are available to you:

- The ABS provides demographic, cultural and linguistic diversity, employment and housing data at a suburb level through Quick Stats: <https://www.abs.gov.au/websitedbs/D3310114.nsf/Home/2016%20QuickStats>. For example, for the Queanbeyan suburb, select 'Queanbeyan, NSW: State Suburb (SSC)' from the drop down menu.
- The ABS also ranks suburbs on the Socio-Economic Indexes for Areas (SEIFA): [http://stat.data.abs.gov.au/Index.aspx?DataSetCode=SEIFA\\_SSC](http://stat.data.abs.gov.au/Index.aspx?DataSetCode=SEIFA_SSC). For more information on the SEIFA, see page 26.
- BOSCAR records criminal offences at a suburb level: [https://www.bocsar.nsw.gov.au/Pages/bocsar\\_datasets/Datasets-.aspx](https://www.bocsar.nsw.gov.au/Pages/bocsar_datasets/Datasets-.aspx). Follow the 'Suburb' link in the Geographic breakdown category for a spreadsheet containing all suburb-level crime data.
- Information about Aboriginal and Torres Strait Islander persons, families and dwellings, including comparisons with non-Indigenous people, is also available at LGA level through the ABS 2016 Census Community Profiles: <https://www.abs.gov.au/websitedbs/D3310114.nsf/Home/2016%20Census%20Community%20Profiles>. For example, for information about the Aboriginal and Torres Strait Islander population of Queanbeyan, select 'Queanbeyan(C), NSW: Local Government Area (LGA)' from the drop down menu, and follow the link for the 'Aboriginal and Torres Strait Islander Peoples Profile'.

# Southern NSW District

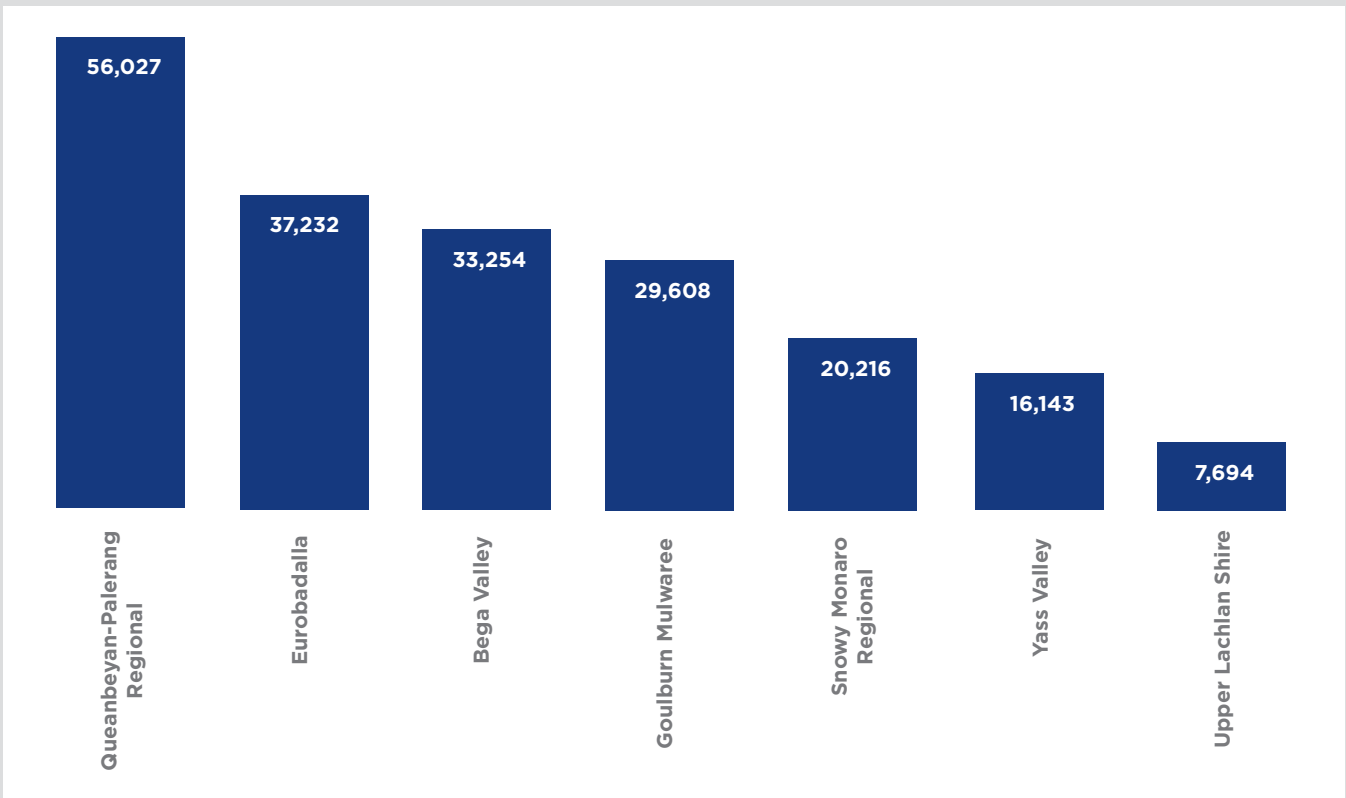


# Demographic Data

## Population – Southern NSW

The population in the Southern NSW district was estimated at 200,174 in the 2016 Census. This district is made up of seven local government areas (LGAs). The largest LGA is Queanbeyan-Palerang Regional, with an estimated population of 56,027. The smallest LGA is Upper Lachlan, with an estimated population of 7,694.

Figure 1. Population of Southern NSW District, by LGA



Source: ABS Quickstats, 2016 Census: <https://www.abs.gov.au/websitedbs/D3310114.nsf/Home/2016%20QuickStats> (accessed 25 September 2019)

The Southern NSW district has an older population than the New South Wales average. The median age of people in Queanbeyan-Palerang LGA is the same as the state average of 38. However, all the other LGAs in the Southern NSW district have a higher median age than the NSW average. The median age for people in Goulburn and Yass Valley is 42, Snowy-Monaro is 43, Upper Lachlan Shire is 48, Bega Valley is 51 and Eurobodalla is 54.

Table 1 shows a breakdown of age for each LGA in the Southern NSW district.

Table 1. Age breakdown of the population by LGA in Southern NSW District

Age Group (years)	Queanbeyan-Palerang Regional		Eurobodalla		Bega Valley		Goulburn Malwaree		Snowy Monaro Regional		Yass Valley		Upper Lachlan Shire		Southern NSW	
	No.	%	No.	%	No.	%	No.	%	No.	%	No.	%	No.	%	No.	%
0-4	3,648	6.5	1,474	4	1,468	4.4	1,742	5.9	959	4.7	1,010	6.3	455	5.9	10,756	5.5
5-9	3,778	6.7	1,888	5.1	1,865	5.6	1,871	6.3	1,278	6.3	1,181	7.3	407	5.3	12,268	6.4
10-14	3,539	6.3	1,955	5.3	1,923	5.8	1,762	6	1,225	6.1	1,209	7.5	483	6.3	12,096	6.1
15-19	3,523	6.3	1,799	4.8	1,792	5.4	1,741	5.9	1,175	5.8	1,032	6.4	438	5.7	11,500	5.8
20-24	3,237	5.8	1,278	3.4	1,189	3.6	1,669	5.6	1,078	5.3	730	4.5	297	3.9	9,478	4.8
25-29	3,748	6.7	1,238	3.3	1,126	3.4	1,769	6	1,120	5.5	669	4.1	296	3.8	9,966	5.0
30-34	3,923	7	1,376	3.7	1,353	4.1	1,795	6.1	1,110	5.5	788	4.9	331	4.3	10,676	5.4
35-39	3,709	6.6	1,484	4	1,414	4.3	1,663	5.6	1,090	5.4	913	5.7	336	4.4	10,609	5.4
40-44	4,186	7.5	1,922	5.2	1,705	5.1	1,860	6.3	1,370	6.8	1,294	8	442	5.7	12,779	6.5
45-49	4,625	8.3	2,140	5.7	2,147	6.5	1,984	6.7	1,491	7.4	1,322	8.2	526	6.8	14,235	7.2
50-54	4,329	7.7	2,529	6.8	2,507	7.5	2,060	7	1,552	7.7	1,178	7.3	657	8.5	14,812	7.5
55-59	3,856	6.9	3,176	8.5	3,054	9.2	2,025	6.8	1,546	7.6	1,158	7.2	626	8.1	15,441	7.8
60-64	3,113	5.6	3,598	9.7	3,109	9.3	1,923	6.5	1,350	6.7	1,036	6.4	587	7.6	14,716	7.5
65 and above	6,817	12.1	11,377	30.4	8,606	25.9	5,743	19.4	3,872	19.1	2,624	16.2	1,809	23.6	40,848	20.7
<b>Total</b>	<b>56,031</b>	<b>100</b>	<b>37,234</b>	<b>100</b>	<b>33,258</b>	<b>100</b>	<b>26,607</b>	<b>100</b>	<b>20,216</b>	<b>100</b>	<b>16,144</b>	<b>100</b>	<b>7,690</b>	<b>100</b>	<b>197,180</b>	<b>100</b>
<b>Total in NSW</b>															<b>7,480,228</b>	<b>2.6</b>

Source: ABS Quickstats, 2016 Census: <https://www.abs.gov.au/websitedbs/D3310114.nsf/Home/2016%20QuickStats> (accessed 25 September 2019)





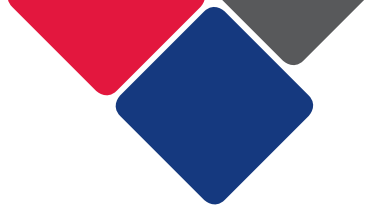
## Aboriginal and Torres Strait Islander population

In the Southern NSW district, 3.5% (n=7,042) of the population identify as Aboriginal and/or Torres Strait Islander. Following national trends, the Aboriginal population of Southern NSW is younger than the non-Aboriginal population. Just over 50% of Aboriginal and/or Torres Strait Islander people are under 25, compared to 28.6% of the population as a whole.

**Table 2. Population of Aboriginal and Torres Strait Islander in Southern NSW by Age**

Age Group (years)	Queanbeyan-Palerang Regional		Eurobodalla		Bega Valley		Goulburn Malwaree		Snowy Monaro Regional		Yass Valley		Upper Lachlan Shire		Southern NSW	
	No.	%	No.	%	No.	%	No.	%	No.	%	No.	%	No.	%	No.	%
0-4	187	10.9	231	11.1	120	11.5	125	10.5	33	7.2	53	13.7	19	10.8	768	10.9
5-9	192	11.1	277	13.3	123	11.8	135	11.4	42	9.1	52	13.4	14	8.0	835	11.9
10-14	210	12.2	241	11.6	146	14.0	141	11.9	40	8.7	43	11.1	23	13.1	844	12.0
15-19	177	10.3	205	9.9	105	10.1	116	9.8	51	11.1	43	11.1	19	10.8	716	10.2
20-24	161	9.3	146	7.0	79	7.6	85	7.2	31	6.7	23	5.9	13	7.4	538	7.6
25-29	123	7.1	103	4.9	47	4.5	102	8.6	35	7.6	23	5.9	11	6.5	444	6.3
30-34	107	6.2	111	5.3	52	5.0	80	6.7	30	6.5	16	4.1	6	3.4	402	5.7
35-39	85	4.9	120	5.8	47	4.5	68	5.7	29	6.3	15	3.9	10	5.7	374	5.3
40-44	108	6.3	120	5.8	61	5.6	68	5.7	38	8.2	23	5.9	12	6.8	430	6.1
45-49	92	5.3	111	5.3	54	5.2	62	5.2	30	6.5	28	7.2	12	6.8	389	5.4
50-54	83	4.8	111	5.3	49	4.7	61	5.1	18	3.9	18	4.7	8	4.5	348	4.9
55-59	79	4.6	103	4.9	49	4.7	50	4.2	26	5.6	11	2.8	4	2.3	322	4.5
60-64	42	2.4	75	3.6	45	4.3	33	2.8	21	4.5	14	3.6	5	2.8	235	3.3
65 and above	64	3.7	127	6.1	64	6.2	60	5.1	37	8.0	25	6.4	20	11.4	397	5.6
<b>Total</b>	<b>1,710</b>	<b>100</b>	<b>2,081</b>	<b>100</b>	<b>1,041</b>	<b>100</b>	<b>1,186</b>	<b>100</b>	<b>461</b>	<b>100</b>	<b>387</b>	<b>100</b>	<b>176</b>	<b>100</b>	<b>7,042</b>	<b>100</b>
<b>% of LGA pop.</b>	<b>3.1</b>		<b>5.6</b>		<b>3.1</b>		<b>4.0</b>		<b>2.3</b>		<b>2.4</b>		<b>2.3</b>		<b>% of district pop. 3.5</b>	

Source: ABS Community Profiles, Aboriginal and Torres Strait Islander Peoples Profile, 2016 Census: <https://www.abs.gov.au/websitedbs/D3310114.nsf/Home/2016%20Census%20Community%20Profiles> (accessed 30 September 2019)



## Country of birth

In the Southern NSW district, 78.5% of residents were born in Australia. This is higher than the New South Wales state average of 65.5%. The most common birthplaces, other than Australia, were England, New Zealand, Scotland and Germany.

**Table 3. Country of Birth in Southern NSW, by LGA**

Bega Valley			Eurobodalla			Goulburn Mulwaree		
Country	No.	%	Country	No.	%	Country	No.	%
Australia	26,443	79.5	Australia	28,881	77.7	Australia	24,472	82.6
<b>Other top responses</b>								
England	1,437	4.3	England	1,836	4.9	England	690	2.3
New Zealand	375	1.1	New Zealand	454	1.2	New Zealand	314	1.1
Germany	238	0.7	Germany	317	0.9	Philippines	152	0.5
Netherlands	204	0.6	Scotland	246	0.7	India	145	0.5
Scotland	159	0.5	Netherlands	189	0.5	Scotland	102	0.3

Snowy Monaro Regional			Yass Valley		
Country	No.	%	Country	No.	%
Australia	15,637	77.3	Australia	13,312	82.8
<b>Other top responses</b>					
England	669	3.3	England	578	3.6
New Zealand	269	1.3	New Zealand	189	1.2
Germany	194	1.0	Germany	70	0.4
Scotland	90	0.4	United States of America	70	0.4
Italy	84	0.4	Netherlands	64	0.4

Queanbeyan-Palerang Regional			Upper Lachlan Shire		
Country	No.	%	Country	No.	%
Australia	41,998	75.0	Australia	6,433	83.9
<b>Other top responses</b>					
England	1,692	3.0	England	179	2.3
India	848	1.5	New Zealand	69	0.9
New Zealand	784	1.4	Scotland	26	0.3
Macedonia <sup>1</sup>	525	0.9	Germany	24	0.3
Philippines	454	0.8	United States of America	24	0.3

**Source:** ABS Quickstats, 2016 Census: <https://www.abs.gov.au/websitedbs/D3310114.nsf/Home/2016%20QuickStats> (accessed 25 September 2019)

<sup>1</sup> The Former Yugoslav Republic of Macedonia

## Languages spoken at home

In the Southern NSW district, over 80% of residents spoke only English at home. This is higher than the NSW state average of 68.5%.

The proportion of households where a non-English language was spoken at home was highest in Queanbeyan-Palerang Region at 15.6%.

**Table 4. Languages spoken at home in Southern NSW, by LGA**

Bega Valley			Eurobodalla		
	No.	%		No.	%
English only spoken at home	29,765	89.5	English only spoken at home	33,050	88.9
Households where a non-English language is spoken	645	4.5	Households where a non-English language is spoken	883	5.4
<b>Top responses other than English</b>					
German	160	0.5	German	177	0.5
Dutch	69	0.2	Italian	118	0.3
Italian	65	0.2	Croatian	106	0.3
French	63	0.2	Spanish	73	0.2
Thai	59	0.2	Greek	72	0.2
Goulburn Mulwaree			Queanbeyan-Palerang Regional		
	No.	%		No.	%
English only spoken at home	25,746	87.0	English only spoken at home	45,218	80.8
Households where a non-English language is spoken	758	6.5	Households where a non-English language is spoken	3,353	15.6
<b>Top responses other than English</b>					
Greek	82	0.3	Macedonian	895	1.6
Mandarin	76	0.3	Italian	640	1.1
Arabic	73	0.2	Punjabi	445	0.8
German	68	0.2	Serbian	272	0.5
Italian	67	0.2	Mandarin	257	0.5

**Table 4. Languages spoken at home in Southern NSW, by LGA (continued)**

Snowy Monaro Regional			Upper Lachlan Shire		
	No.	%		No.	%
English only spoken at home	17,287	85.4	English only spoken at home	6,958	90.7
Households where a non-English language is spoken	612	6.6	Households where a non-English language is spoken	77	2.4
<b>Top responses other than English</b>					
German	192	0.9	German	14	0.2
Italian	88	0.4	Greek	11	0.1
Mandarin	81	0.4	Mandarin	10	0.1
French	47	0.2	Dutch	8	0.1
Dutch	40	0.2	Maltese	7	0.1
<b>Yass Valley</b>					
	No.	%			
English only spoken at home	14,550	90.2			
Households where a non-English language is spoken	319	5.4			
<b>Top responses other than English</b>					
England	61	0.4			
New Zealand	59	0.4			
Germany	40	0.2			
United State of America	35	0.2			
Netherlands	31	0.2			

**Source:** ABS Quickstats, 2016 Census: <https://www.abs.gov.au/websitedbs/D3310114.nsf/Home/2016%20QuickStats> (accessed 25 September 2019)

## Migration streams

Only 0.8% of the total number of migrants to New South Wales between 1 January and 31 December 2017 migrated to the Southern NSW District.

The largest number of migrants to the Southern NSW District settled in the Queanbeyan-Palerang Regional LGA. Most of these were skilled migrants (n=253), followed by family migrants (n=117). There were no humanitarian migrants to the Southern NSW district in 2017.

**Table 5. Migration Stream in Southern NSW, by LGA, between 1 January and 31 December 2017**

LGA	Migration Stream			Total
	Family	Humanitarian	Skilled	
Bega Valley	27	0	19	46
Eurobodalla	35	0	18	53
Goulburn Mulwaree	36	0	88	124
Queanbeyan-Palerang Regional	117	0	253	370
Snowy Monaro Regional	33	0	0	33
Upper Lachlan Shire	0	0	0	0
Yass Valley	6	0	7	13
<b>Southern NSW</b>	<b>254</b>	<b>0</b>	<b>385</b>	<b>639</b>
<b>Total NSW</b>	<b>27,200</b>	<b>6,514</b>	<b>47,002</b>	<b>80,794</b>

**Source:** Department of Social Services, Settlement Data Reports January 2017 to 31 December 2017: <https://www.data.gov.au/dataset/ds-dga-8d1b90a9-a4d7-4b10-ad6a-8273722c8628/details> (accessed 25 September 2019)

# Children and Young People

## Government schools

The following tables provide information about the government schools in the seven LGAs that make up the Southern NSW district. These tables provide information on the following factors:

<b>No. of FTE enrolments</b>	The number of full-time equivalent (FTE) enrolments indicates the number of students who attended the school over the course of the academic year. For example, 39.2 means 39 students were enrolled full time for one academic year and one student was enrolled for a fifth of the year.
<b>% of ATSI</b>	The percentage of FTE students enrolled who identify as Aboriginal and/or Torres Strait Islander.
<b>% of LBOTE</b>	The percentage of students (headcount) who have a language background other than English (LBOTE). A student has a LBOTE if they, or their parents or guardians, speak a language other than English at home.
<b>ISCEA value</b>	<p>The Index of Community Socio-Education Advantage (ICSEA) provides information about the socio-educational backgrounds of a school's students. This is worked out by looking at the parents' occupation and education, a school's geographical location, and the proportion of Indigenous students.</p> <p>The ICSEA is set at an average of 1000. The lower the ICSEA level, the lower the educational advantage of students who go to this school. The highest score of a public school in New South Wales is 1245, and the lowest score is 543.</p>
<b>% School attendance</b>	The attendance rate is the number of actual FTE student days attended by full-time students in Years 1-10 in Semester One as a percentage of the total number of possible student-days attended in semester one.

There are 136 government schools in the Southern NSW district (see Tables 6a-g):

- 16 in Bega Valley
- 11 in the Eurobodalla LGA
- 14 in the Goulbourn Mulwaree LGA
- 10 in the Queanbeyan-Palerang Regional LGA
- 10 in the Upper Lachlan Shire LGA
- 14 in Snowy Monaro Regional LGA
- 8 in Yass Valley LGA

The largest school is Karabar High School in Queanbeyan-Palerang Regional LGA (1130.4 FTE enrolments). The smallest schools are Bredbo Public school in Snowy Monaro Regional LGA, Wee Jasper in Yass Valley LGA and Breadalbane Public School in Upper Lachlan Shire LGA - all with just six FTE enrolments.



Mogo Public School in Eurobodalla has the highest proportion of Aboriginal and/or Torres Strait Islander students (74%). Queanbeyan South Public School has the highest proportion of students with a language background other than English (24%).

Mogo Public School has the lowest ISCEA value (694). Jerrabomberra Public School in Queanbeyan-Palerang Regional LGA has the highest ISCEA value (1102). This means that students who attend Jerrabomberra have a higher educational advantage than students who attend Mogo Public school.

The school with the lowest school attendance is Goulbourn High School (86.6%) followed by Mogo Public School (87.5%). The schools with the highest school attendance are Gunning Public School and Dalton Public School (96.1%), both in Upper Lachlan Shire.

**Table 6a. Profiles of government schools in Kiama LGA**

Government school	No. of FTE enrolments	% of ATSI	% of LBOTE	ISCEA value	% School attendance
Bega High School	734.2	12	5	958	87
Bega Valley Public School	321	13	3	925	91
Bemboka Public School	48	17	np	909	94
Bermagui Public School	164	18	9	937	90.2
Candelo Public School	70	9	np	1018	95
Cobargo Public School	62	np	np	953	92.5
Eden Marine High School	579	13	3	947	86
Eden Public School	290	20	3	912	92.7
Merimbula Public School	389	5	9	1006	92.4
Pambula Public School	323	4	4	995	91.8
Quaama Public School	63	11	np	985	95.5
Tanja Public School	8	np	0	1035	93.9
Tathra Public School	229	np	5	1041	94.5
Towamba Public School	21	np	0	923	89.2
Wolumla Public School	81	np	np	989	92.8
Wyndham Public School	26	np	0	890	91

**Table 6b. Profile of government schools in the Eurobodalla LGA**

Government school	No. of FTE enrolments	% of ATSI	% of LBOTE	ISCEA value	% School attendance
Batemans Bay High School	694.6	16	3	922	85.8
Batemans Bay Public School	581	27	5	890	92.6
Bodalla Public School	74	30	np	904	93.5
Broulee Public School	371	6	5	1011	94.1
Central Tilba Public School	38	np	0	996	94.6
Mogo Public School	35	74	0	694	87.5
Moruya High School	570.8	15	4	957	86.3
Moruya Public School	345	18	5	924	92.2
Narooma High School	470	19	6	930	86.9
Narooma Public School	443	21	4	939	93.5
Sunshine Bay Public School	309	16	8	934	92.8

**Table 6c. Profile of government schools in the Goulbourn Mulwaree LGA**

Government school	No. of FTE enrolments	% of ATSI	% of LBOTE	ISCEA value	% School attendance
Bradfordville Public School	288	10	6	948	93.7
Goulburn East Public School	172	7	6	983	95.3
Goulburn High School	591	7	6	946	86.6
Goulburn North Public School	300	6	8	950	93.4
Goulburn Public School	160	18	8	863	91.3
Goulburn South Public School	174	14	11	909	93.4
Goulburn West Public School	428	5	8	980	94.5
Marulan Public School	93	8	6	912	92.9
Mulwaree High School	851.3	7	5	975	89.4
Tallong Public School	67	np	np	959	94.1
Tarago Public School	38	np	np	991	93
Tirranna Public School	24	np	np	918	92
Windellama Public School	29	0	0	939	
Wollondilly Public School	322	8	8	967	94.1

Table 6d. Profile of government schools in the Queanbeyan-Palerang Regional LGA

Government school	No. of FTE enrolments	% of ATSI	% of LBOTE	ISCEA value	% School attendance
Braidwood Central School	344	7	5	987	88.4
Bungendore Public School	499	3	5	1055	93.1
Captains Flat Public School	50	18	np	927	92.7
Jerrabomberra Public School	943	1	15	1102	94.9
Karabar High School	1130.4	11	20	998	86.7
Queanbeyan East Public School	232	10	25	996	91.6
Queanbeyan High School	502	13	21	957	87.8
Queanbeyan Public School	773	10	22	1003	94
Queanbeyan South Public School	394	23	24	924	90.8
Queanbeyan West Public School	470	10	23	982	93.5

Table 6e. Profile of government schools in the Snowy Morano Regional LGA

Government school	No. of FTE enrolments	% of ATSI	% of LBOTE	ISCEA value	% School attendance
Adaminaby Public School	19	np	0	964	95.6
Berridale Public School	61	np	0	959	95
Bombala High School	129.8	7	np	919	87.3
Bombala Public School	131	np	np	947	91.3
Bredbo Public School	6	0	0	1011	88.2
Cooma North Public School	324	3	6	986	93.9
Cooma Public School	259	4	5	974	93.3
Dalgety Public School	18	0	0	1042	86.7
Delegate Public School	41	20	0	941	93.2
Jerangle Public School	8	0	0	975	93.9
Jindabyne Central School	881.8	2	9	1034	92.1
Michelago Public School	38	16	np	992	93.9
Monaro High School	459.6	6	6	978	90.5
Nimmitabel Public School	34	0	0	993	93.7

**Table 6f. Profile of government schools in the Upper Lachlan Shire LGA**

Government school	No. of FTE enrolments	% of ATSI	% of LBOTE	ISCEA value	% School attendance
Bigga Public School	12	0	0	1049	95.5
Binda Public School	10	np	0	824	90.4
Breadalbane Public School	6	0	np	1027	sp
Collector Public School	29	np	0	1047	93.9
Crookwell High School	249	8	4	955	89.7
Crookwell Public School	216	6	6	967	94.6
Dalton Public School	10	np	0	975	96.1
Gunning Public School	96	7	np	1004	96.1
Laggan Public School	np	0	0		91.9
Taralga Public School	32	np	0	965	92.9

**Table 6g. Profile of government schools in the Yass Valley LGA**

Government school	No. of FTE enrolments	% of ATSI	% of LBOTE	ISCEA value	% School attendance
Berimba Public School	293	11	3	967	92.3
Binalong Public School	32	np	0	976	92.8
Bowning Public School	21	np	np	935	94.4
Gundaroo Public School	105	np	7	1070	95.9
Sutton Public School	279	np	3	1088	93.3
Wee Jasper Public School	6	0	0	1012	sp
Yass High School	531	9	5	989	90.1
Yass Public School	298	9	5	1017	93.9



The Department of Education also provides information about suspensions and expulsions from government schools at the district level<sup>1</sup>.

Table 7 shows that the Southern NSW district has a higher proportion of students who received short suspensions (four days or less) in 2018 compared to the NSW state average. In 2018, 5.2% of students received short suspensions in the Southern NSW district, compared to 4.0% in NSW. The proportion of students who received long suspensions (4-20 school days) was similar to the NSW state average, 2.5% in the district compared to 1.5% in the state.

Less than five students were expelled for misbehaviour in the Southern NSW district in 2018, and less than were five expelled for unsatisfactory behaviour.

---

<sup>1</sup> To our knowledge, LGA data is unavailable.

**Table 7. Suspensions and expulsions from government schools in Southern NSW district**

	Southern NSW	New South Wales
Total short suspensions <sup>1</sup>	1,799	52,755
Total number students short suspended	1,084	32,343
Students short suspended as % of enrolment	5.2%	4.0%
Total long suspensions	707	17,235
Total number students long suspended <sup>2</sup>	515	12,355
Students long suspended as % of enrolment	2.5%	1.5%
Students expelled for misbehaviour	<5 <sup>3</sup>	175
Students expelled for unsatisfactory participation	<5	122

**Source:** NSW Centre for Education Statistics and Evaluation, Suspensions and Expulsions in NSW government schools (2015-2018): <https://data.cese.nsw.gov.au/data/dataset/suspensions-and-expulsions-in-nsw-government-schools> (accessed 9 October 2019)

<sup>1</sup> includes students on short suspension (four days or less) on more than one occasion

<sup>2</sup> includes students on long suspension (four to 20 school days) on more than one occasion

<sup>3</sup> In order to protect individual students' identities, in this table, values 5 and under are represented as <5 and n/a is used in the "Total" column.

## Early childhood development

The Australian Early Development Census (AEDC) measures the early childhood development of children in Australia in their first year of full-time school. It measures this across five domains that predict later health, education and social outcomes:

- physical health and wellbeing
- social competence
- emotional maturity
- language and cognitive skills (school-based)
- communication skills and general knowledge.

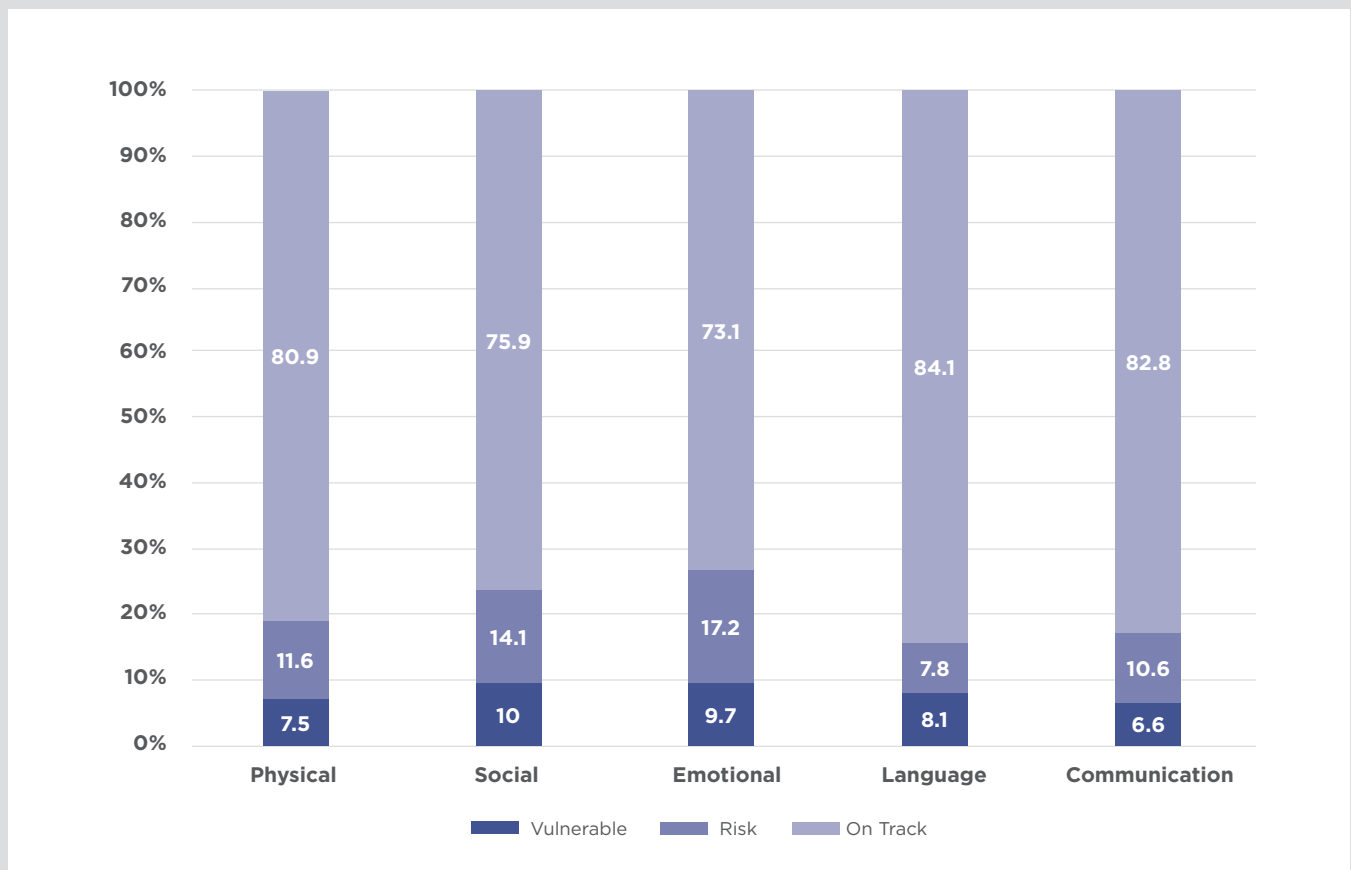
### MORE INFORMATION

More information about the AEDC domains can be found in the [About the AEDC Domains](#) fact sheet.

The AEDC results can tell us if children are developmentally on track or if they need more support through their school years.

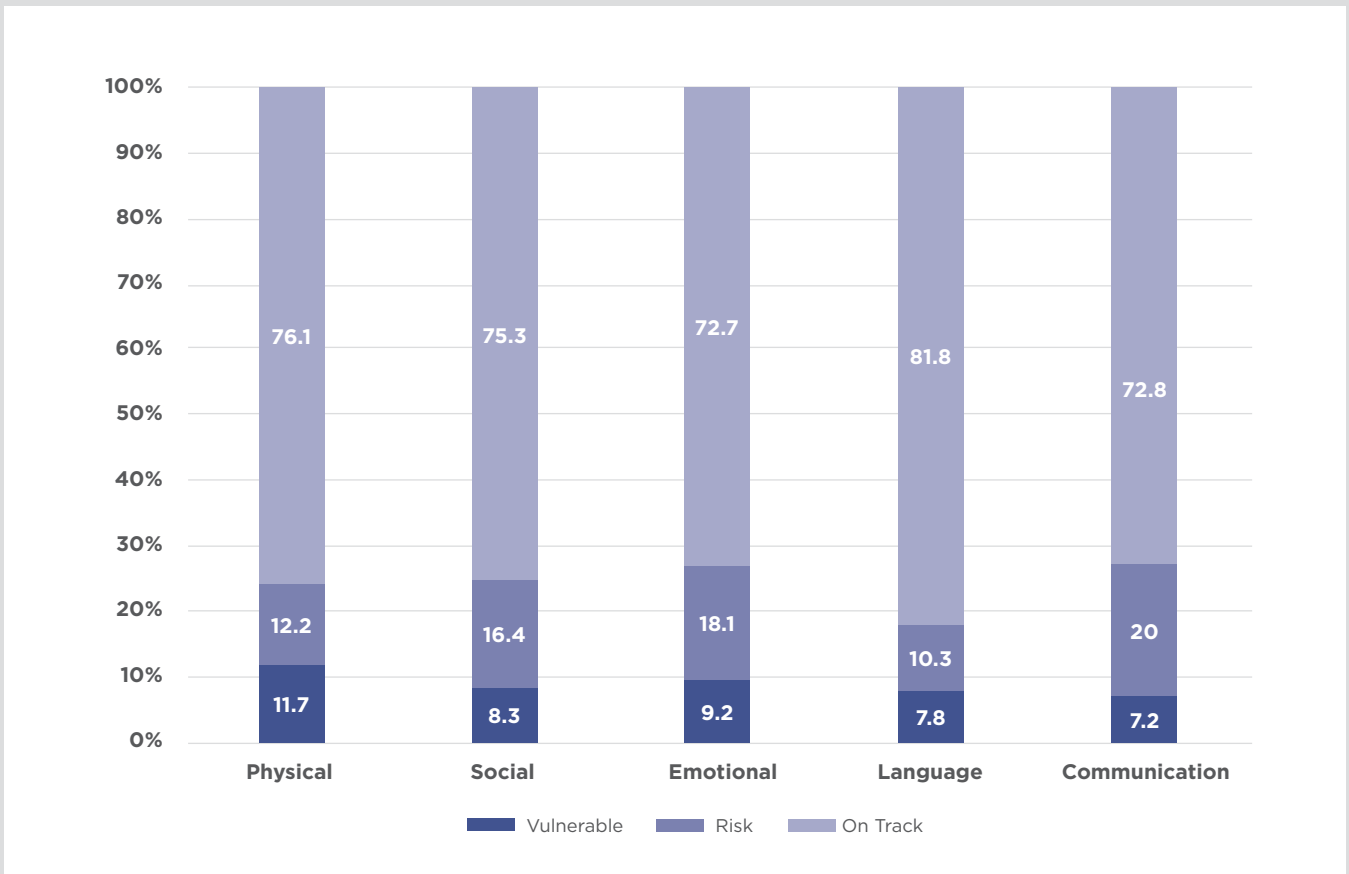
In all seven LGAs, over 70% of children were developmentally 'on track' for each of the five AEDC domains in 2018. The Upper Lachlan LGA has the greatest percentage of children who were 'on track' (more than 85% of children were on track in the emotional domain, and more than 90% were on track in the over four domain), however the sample size for this LGA was also the smallest of the seven LGAs - with only 77 children measured.

Figure 2. 2018 AEDC results for Bega Valley LGA



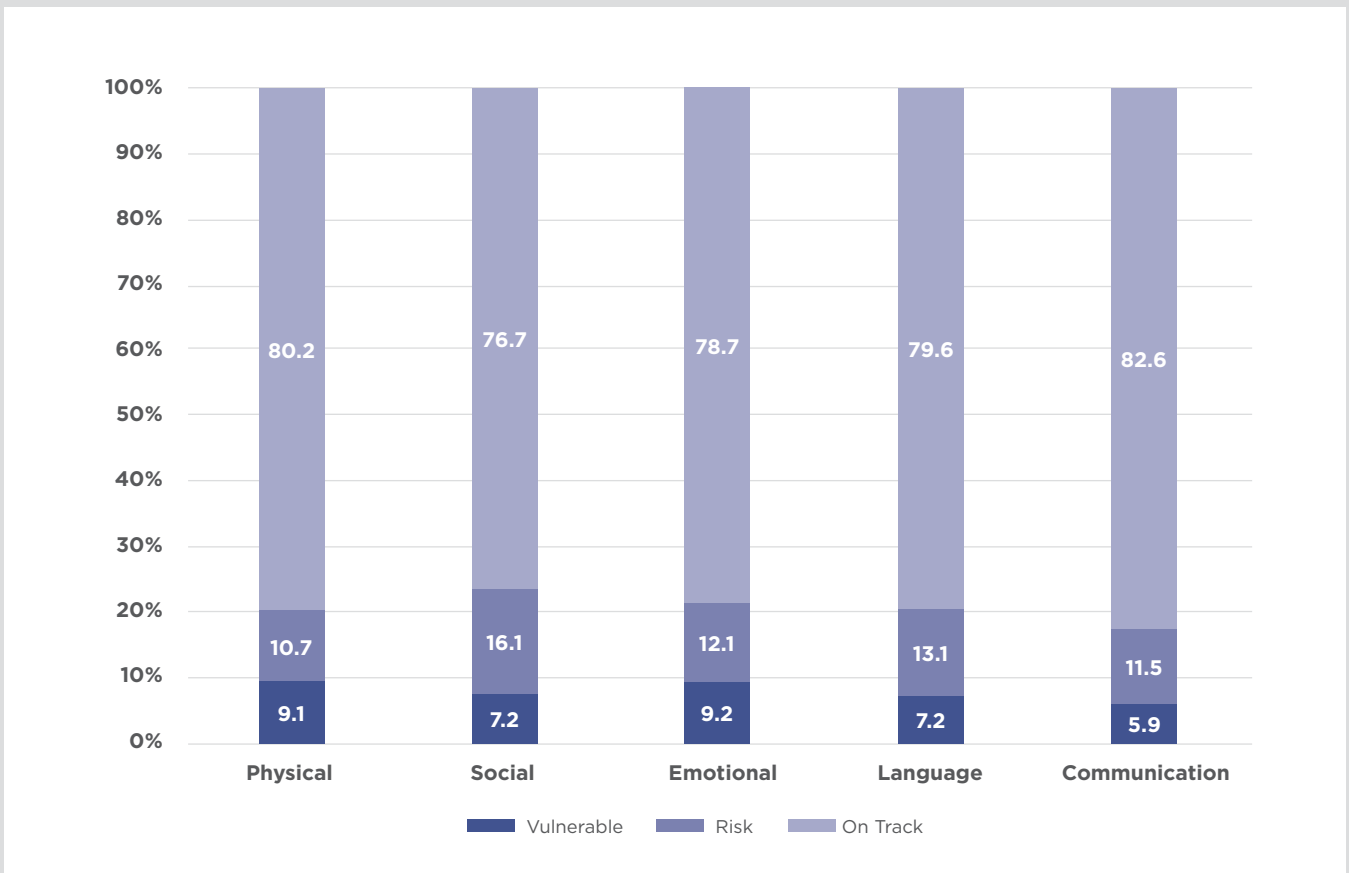
Source: AEDC Data Explorer: <https://www.aedc.gov.au/data/data-explorer> (accessed 26 September 2019)

**Figure 3. 2018 AEDC Results for Eurobodalla LGA**



Source: AEDC Data Explorer: <https://www.aedc.gov.au/data/data-explorer> (accessed 26 September 2019)

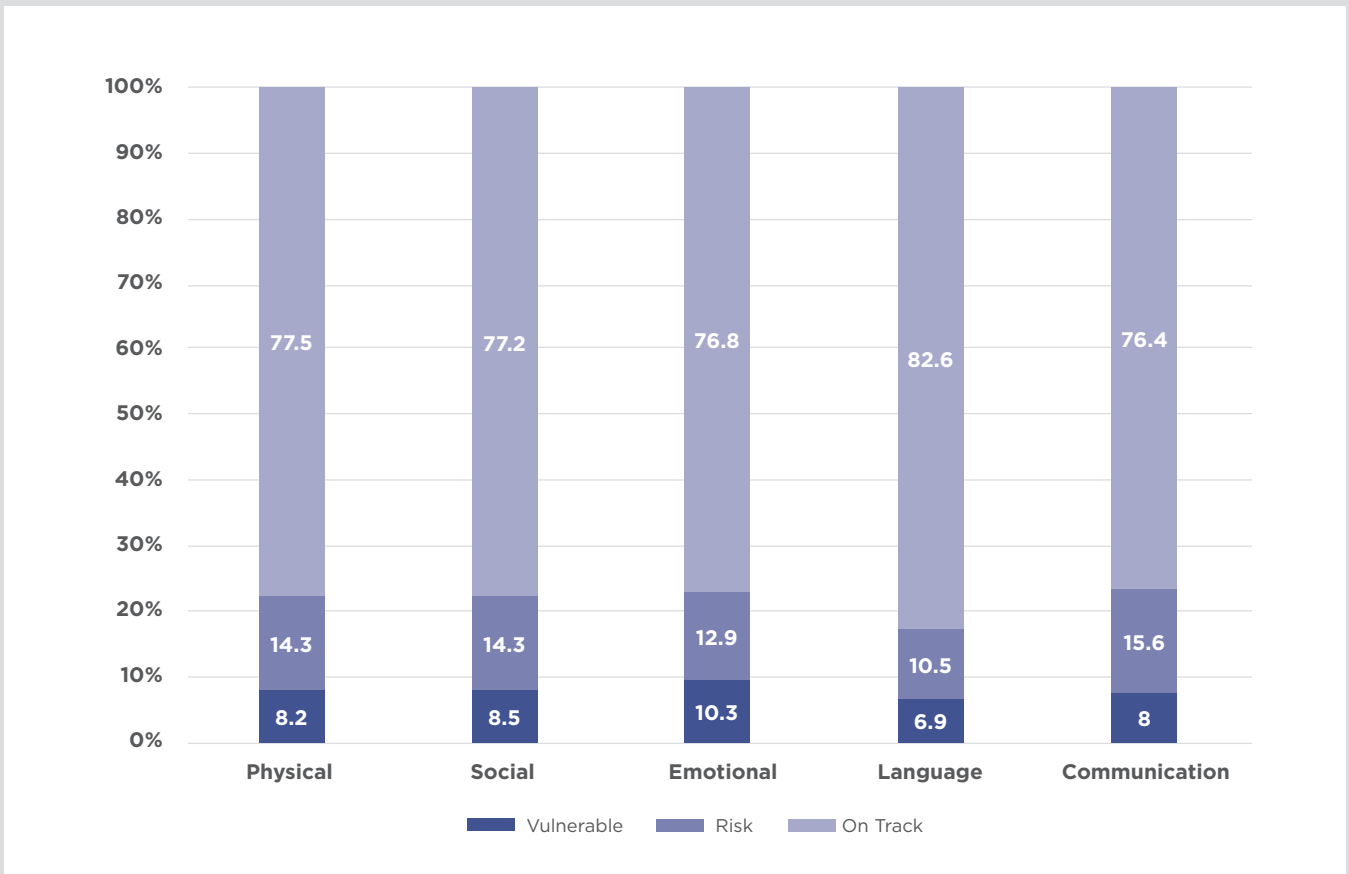
**Figure 4. 2018 AEDC results for Goulburn Mulwaree LGA**



Source: AEDC Data Explorer: <https://www.aedc.gov.au/data/data-explorer> (accessed 26 September 2019)

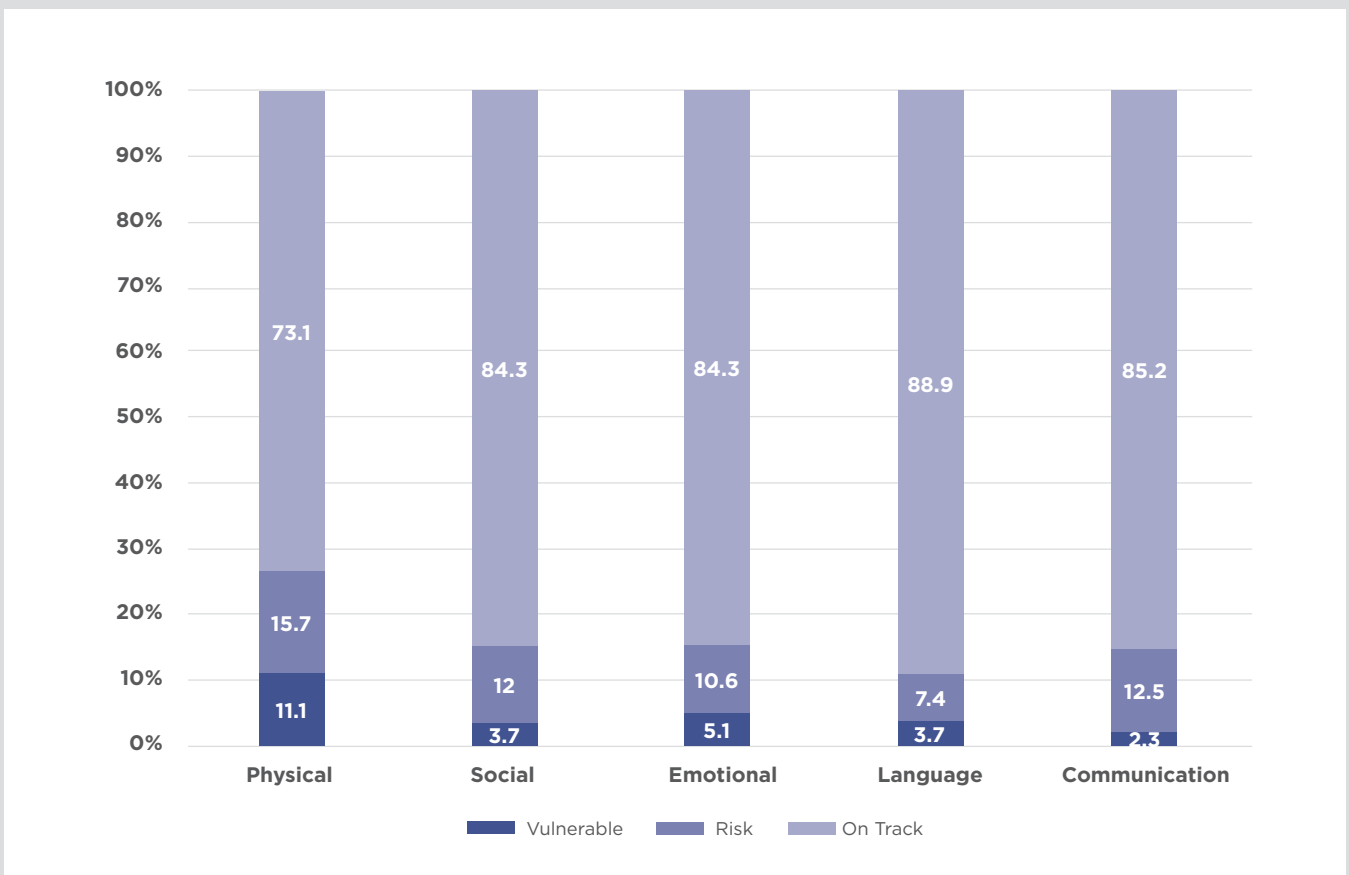


**Figure 5. 2018 AEDC results for Queanbeyan Palerang LGA**



Source: AEDC Data Explorer: <https://www.aedc.gov.au/data/data-explorer> (accessed 26 September 2019)

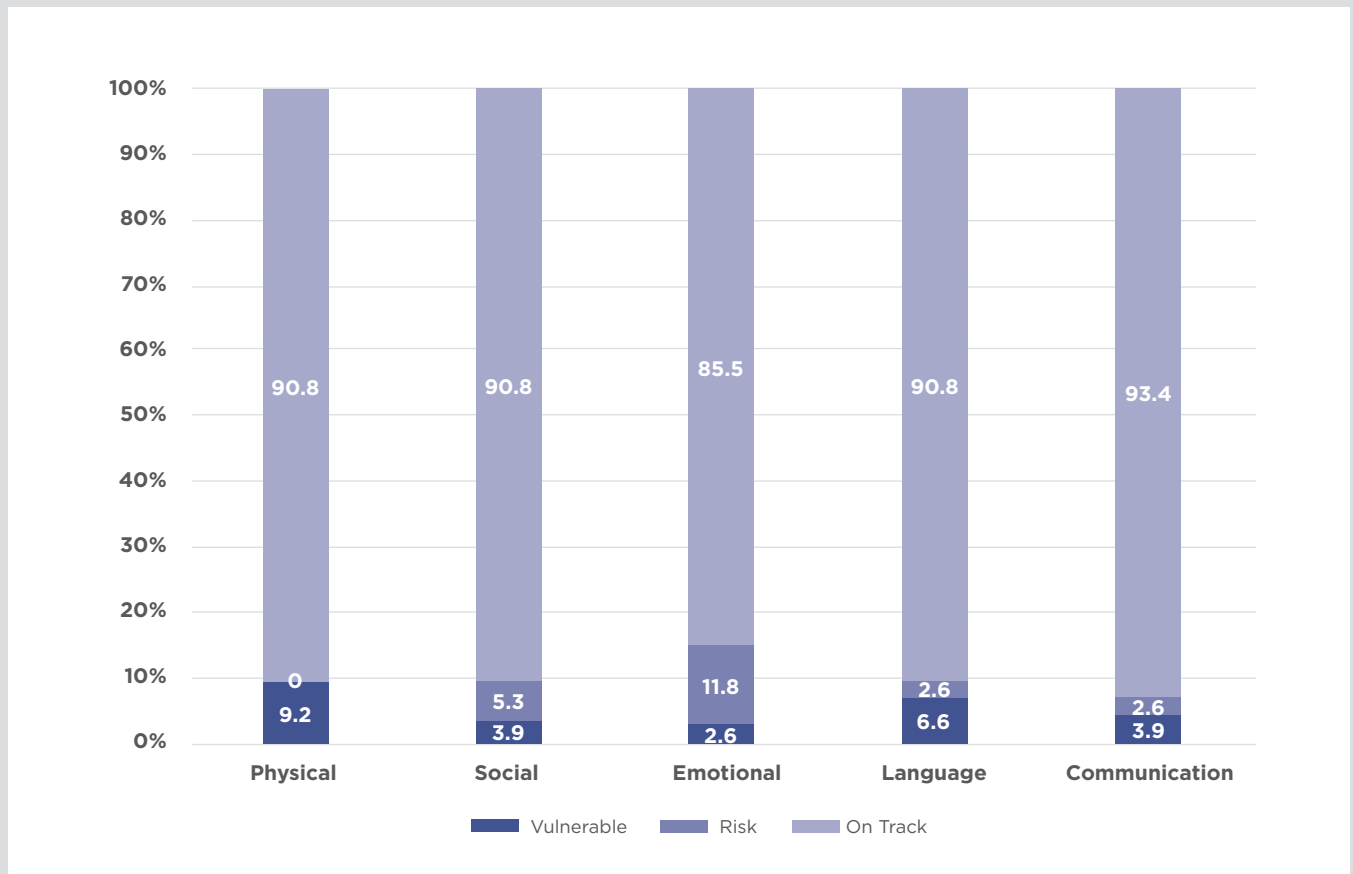
**Figure 6. 2018 AEDC Results for Snowy Monaro Regional LGA<sup>1</sup>**



Source: AEDC Data Explorer: <https://www.aedc.gov.au/data/data-explorer> (accessed 26 September 2019)

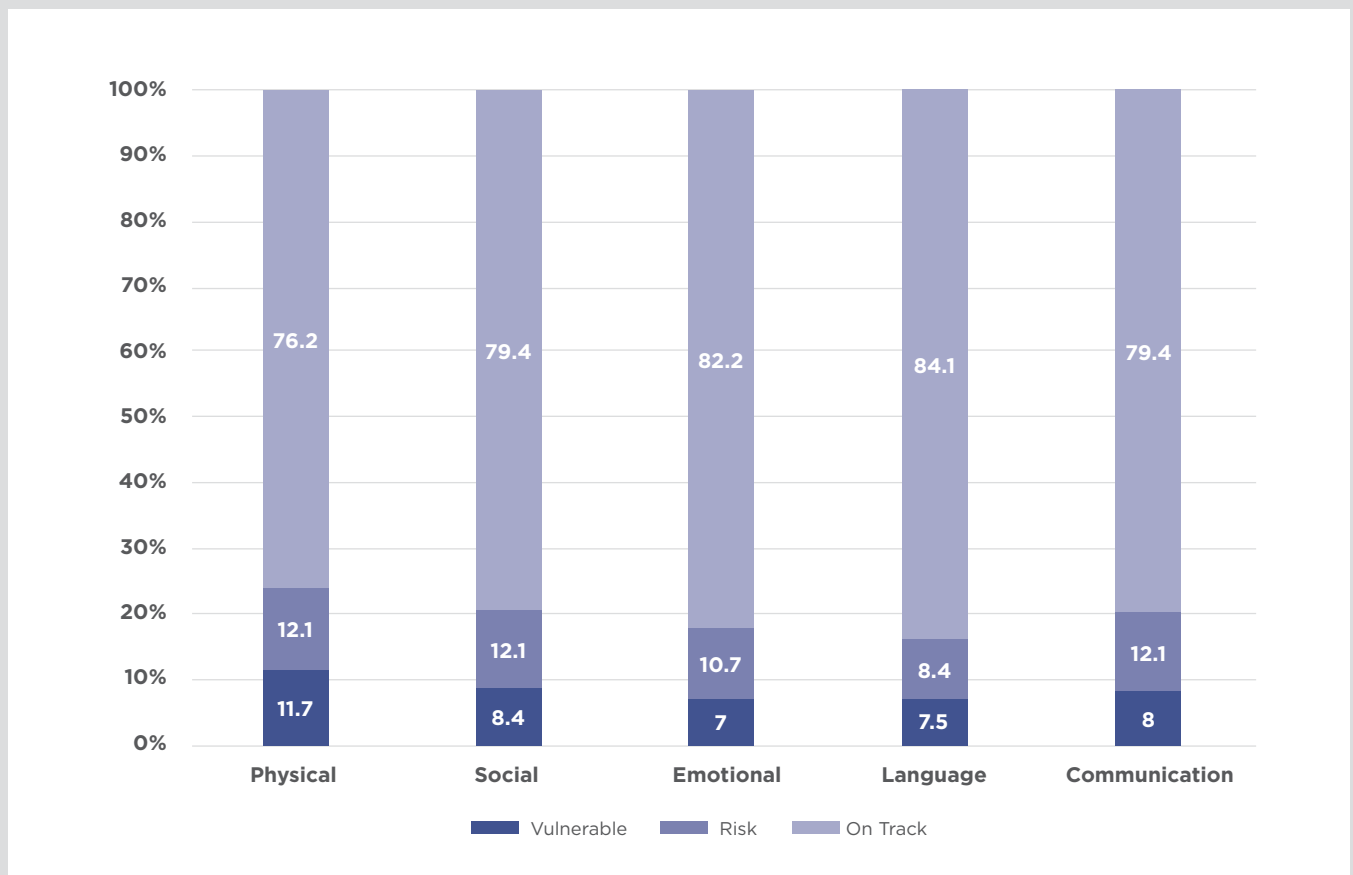
<sup>1</sup> Snowy Monaro Regional LGA was formed in 2016 through a merger of Bombala, Comma-Monaro and Snowy River. The figures here have combined these three areas.

Figure 7. 2018 AEDC results for Upper Lachlan Shire LGA



Source: AEDC Data Explorer: <https://www.aedc.gov.au/data/data-explorer> (accessed 26 September 2019)

Figure 8. 2018 AEDC results for Yass Valley LGA



Source: AEDC Data Explorer: <https://www.aedc.gov.au/data/data-explorer> (accessed 26 September 2019)

The AEDC also has two summary indicators that measure developmental vulnerability across all five domains.

In the Southern NSW district, 9.2% of children were developmentally vulnerable on two or more domains (see Table 8). This was similar to the state average of 9.6%.

Yass Valley and Eurobodalla had the highest proportions of children developmentally vulnerable on two or more domains, at 12.1% and 11.4% respectively.

Snowy Monaro Regional and Upper Lachlan Shire had the smallest proportions of children developmentally vulnerable on two or more domains, at 5.2% and 5.3% respectively.

**Table 8. Percentage of children developmentally vulnerable in Southern NSW, by LGA, 2018**

	Developmentally vulnerable on 1 or more domain		Developmentally vulnerable on two or more domains		Total no. of children measured
	No.	%	No.	%	
Bega Valley	65	20.3	33	10.3	340
Eurobodalla	88	23.1	41	11.4	376
Goulburn Mulwaree	78	21	33	8.8	393
Queanbeyan-Palerang Regional	123	22.3	54	9.8	568
Snowy Monaro Regional <sup>1</sup>	35	15.2	12	5.2	230
Upper Lachlan Shire	9	11.8	4	5.3	77
Yass Valley	45	21.0	26	12.1	224
<b>Southern NSW</b>	<b>443</b>	<b>20.1</b>	<b>203</b>	<b>9.2</b>	<b>2208</b>
<b>NSW</b>	<b>18,583</b>	<b>19.9</b>	<b>9,001</b>	<b>9.6</b>	<b>97,731</b>

**Source:** AEDC Data Explorer: <https://www.aedc.gov.au/data/data-explorer> (accessed 26 September 2019)

<sup>1</sup> Snowy Monaro Regional LGA was formed in 2016 through a merger of Bombala, Comma-Monaro and Snowy River. The figures here have combined these three areas.



# Vulnerable children and young people

Using the Their Futures Matter (TFM) Human Services Dataset, TFM identified three vulnerable groups of children and young people in NSW:

<p><b>Young children aged 0-5</b></p>	<p>Children aged 5 or younger at 30 June 2017 with one or more of the following:</p> <ul style="list-style-type: none"> <li>• 1 or more parental risk factors</li> <li>• 2 or more perinatal risk factors</li> <li>• Assessment as at ROSH</li> </ul>
<p><b>Children aged under 15 and affected by mental illness</b></p>	<p>Children under 15 years at 30 June 2017 with one or more the following:</p> <ul style="list-style-type: none"> <li>• Use of NSW mental health services (hospital or ambulatory)</li> <li>• Parental use of NSW mental health services (hospital or ambulatory)</li> </ul>
<p><b>Children and young people aged 15-18 and affected by mental illness</b></p>	<p>Children and young people between 15-18 years at 30 June 2017 with one or more of the following:</p> <ul style="list-style-type: none"> <li>• Use of NSW mental health services (hospital or ambulatory)</li> <li>• Parental use of NSW mental health services (hospital or ambulatory)</li> </ul>

For each vulnerable group, TFM identified five indicators associated with poor outcomes later in life. They also identified the proportion of this group with this indicator. TFM identified these indicators by undertaking predictive modelling and analysis, using the TFM Human Services Data set. This dataset brings together data collected by ten different government agencies. It includes data on child protection, housing, justice, health, education and commonwealth service use.

Table 9 shows the top five indicators for each vulnerable group in the Illawarra Shoalhaven district.



**Table 9. Indicators of vulnerable children and young people in the Southern NSW district**

Vulnerable group	Indicator	% of group with indicator
Young children aged 0-5	Parents have interacted with justice system	37
	Mother smoked during pregnancy	45
	Child had concern report	28
	Mother aged 21 and under at childbirth	21
	Parents have been in social housing	11
Children aged under 15 and affected by mental illness	Child had a concern report	45
	Mother smoked during pregnancy	43
	Parents have interacted with justice system	39
	Mother aged 21 and under at childbirth	23
	Parents have been in social housing	21
Children and young people aged 15-18 and affected by mental illness	NAPLAN Year 7 band less than 6	54
	Had concern report in the last three years	42
	Hospital admission in the last three years	35
	Family have been in social housing	26
	Has appeared in court	8

**Source:** Their Futures Matter, FACS District Data pack, Southern NSW district

Table 10 shows the number and proportion of children in each of the vulnerable groups by LGA. It also shows us what proportion of this group identifies as Aboriginal.

For example, in Queanbeyan-Palerang Regional, 592 children were under the age of 5. Of these children, 32% (n=189) were identified as vulnerable and 24% of these vulnerable children identified as Aboriginal. By comparison, in Eurobodalla, 41% of children under the age of 5 were vulnerable and 32% of these children identified as Aboriginal.

When looking at children under the age of 15, 19% were affected by mental illness in Eurobodalla and 18% in Bega Valley, compared to 12% in Queanbeyan-Palerang Regional. When looking at children and young people between the ages of 15 and 18, 34% were affected by mental illness in Queanbeyan-Palerang Regional, compared to only 15% in Upper Lachlan Shire.

**Table 10. Vulnerable groups of children and young people in the Southern NSW district, by LGA**

	Bega Valley	Eurobodalla	Goulburn Mulwaree	Queanbeyan-Palerang Regional	Snowy Monaro Regional	Upper Lachlan Shire <sup>1</sup>	Yass Valley <sup>1</sup>	
Young children aged 0-5	No. of C/YP aged under 5	1,416	1,599	1,544	592	884	298	90
	No. of <i>vulnerable</i> C/YP aged under 5	501	653	608	189	294	88	26
	% of <i>vulnerable</i> C/YP aged under 5	35%	41%	39%	32%	33%	30%	29%
	% who identify as Aboriginal	25%	32%	17%	24%	14%	NA	NA
Children aged under 15 and affected by mental illness	No. of C/YP aged under 15	3,277	3,572	3,287	1,138	1,952	669	239
	No. of C/YP aged under 15 affected by mental illness	595	668	502	136	318	65	38
	% of C/YP aged under 15 affected by mental illness	18%	19%	15%	12%	16%	10%	16%
	% of identify as Aboriginal	27%	35%	21%	18%	14%	9%	21%
Children and young people aged 15-18 and affected by mental illness	No. of C/YP aged 15-18	1,157	1,189	1,113	334	591	250	163
	No. of C/YP aged 15-18 affected by mental illness	231	255	235	113	100	38	39
	% of C/YP aged 15-18 affected by mental illness	20%	21%	21%	34%	17%	15%	24%
	% of identify as Aboriginal	26%	29%	15%	20%	25%	18%	18%

**Source:** Their Futures Matter, FACS District Data pack, Southern NSW district

<sup>1</sup> Some cells have been set to NA to minimize the risk of re-identification. These cells either have a count of less than 5 people or have the lowest number of people in the FACS district in the remaining LGAs.

## Contact with child protection services

In 2016-17, 0.9% (n=455) of all children and young people aged 18 and under in the Southern NSW district were in out-of-home care (OOHC) (see Table 11). The majority of these children and young people were in Goulburn Mulwaree (n=117), Eurobodalla (n=86), Queanbeyan-Palerang Regional (n=86) and Bega Valley (n=80) LGAs.

In 2016-17, 5.3% (n=2,729) of children and young people aged 18 and under in the Southern NSW district were found to be at risk of significant harm (ROSH). The majority of these children were in the Eurobodalla LGA (n=647) and the Queanbeyan-Palerang LGA.

Table 11. Child Protection Overview in the Southern NSW District, by LGA, 2016-17

	Total number of children and young people reported		Total number of children and young people at risk of significant harm		Total number of children and young people in out-of-home care as of 30 June 2017		Total number of CYP 18 and under
	No.	%	No.	%	No.	%	No.
Bega Valley	671	9.9	487	7.2	80	1.2	6,762
Eurobodalla	866	12.7	647	9.5	86	1.3	6,837
Goulburn Mulwaree	690	10.1	518	7.6	117	1.7	6,830
Queanbeyan-Palerang Regional	891	6.4	593	4.3	86	0.6	13,870
Snowy Monaro Regional	316	7.2	257	5.8	42	1.0	4,410
Upper Lachlan Shire	88	5.1	65	3.8	19	1.1	1,713
Yass Valley	243	5.7	160	3.8	25	0.6	4,235
<b>Southern NSW</b>	<b>3,764</b>	<b>7.3</b>	<b>2,729</b>	<b>5.3</b>	<b>455</b>	<b>0.9</b>	<b>51,605</b>
<b>NSW</b>	<b>230,343</b>	<b>13.2</b>	<b>168,819</b>	<b>9.7</b>	<b>36,304</b>	<b>2.1</b>	<b>1,742,488</b>

Source: FACS Datacube, accessed 27 September 2019



# Economic Environment

---

## Education

Of people aged 15 and over in the Southern NSW district, 17.4% reported having completed a Bachelor degree level and above as their highest level of educational attainment. 13.2% reported having completed Year 12 and 19.6% had completed a Certificate III or IV (see Table 12).



**Table 12. Level of highest educational attainment in Southern NSW district, by LGA (people aged 15 years and over)**

Highest level of educational attainment	Bega Valley		Eurobodalla		Mulwaree		Queanbeyan-Palerang Regional		Snowy Monaro Regional		Yass Valley		Upper Lachlan Shire		Southern NSW		NSW
	No.	%	No.	%	No.	%	No.	%	No.	%	No.	%	No.	%	No.	%	No.
Bachelor Degree level and above	4,193	15.0	4,282	13.4	2,786	11.5	10,367	23.0	2,495	14.9	3,007	23.6	777	12.2	27,907	17.4	23.4
Advanced Diploma and Diploma level	2,331	8.3	2,660	8.3	2,068	8.5	4,482	9.9	1,410	8.4	1,188	9.3	550	8.7	14,689	9.2	8.9
Certificate level IV	849	3.0	990	3.1	928	3.8	1,609	3.6	634	3.8	419	3.3	197	3.1	5,626	3.5	2.8
Certificate level III	4,657	16.6	5,491	17.2	3,975	16.4	5,946	13.2	2,897	17.3	1,725	13.5	1,046	16.5	25,737	16.1	12.0
Year 12	3,098	11.1	3,441	10.8	2,701	11.2	7,160	15.9	2,163	12.9	1,814	14.2	691	10.9	21,068	13.2	15.3
Year 11	1,353	4.8	1,205	3.8	854	3.5	1,534	3.4	593	3.5	464	3.6	223	3.5	6,226	3.9	3.3
Year 10	4,087	14.6	4,807	15.1	3,855	15.9	4,838	10.7	2,133	12.7	1,462	11.5	1,001	15.8	22,183	13.9	11.5
Certificate level II	34	0.1	48	0.2	19	0.1	35	0.1	19	0.1	10	0.1	5	0.1	170	0.1	0.1
Certificate level I	0	0.0	3	0.0	3	0.0	6	0.0	0	0.0	0	0.0	3	0.0	15	0.0	0.0
Year 9 or below	2,667	9.5	3,329	10.4	2,622	10.8	3,198	7.1	1,398	8.3	844	6.6	739	11.6	14,797	9.2	8.4
No education attainment	47	0.2	60	0.2	109	0.5	153	0.3	56	0.3	24	0.2	17	0.3	466	0.3	0.9
Not stated	3,736	13.3	4,457	14.0	3,592	14.8	4,569	10.1	2,449	14.6	1,450	11.4	891	14.0	2,1144	13.2	10.3

Source: ABS Quickstats, 2016 Census: <https://www.abs.gov.au/websitedbs/D3310114.nsf/Home/2016%20QuickStats> (accessed 25 September 2019)



## Employment

There were 86,680 people who reported being in the labour force in the week before Census night in the Southern NSW district (see Table 13). Of these, 63.0% were employed full time, 25.0% were employed part-time and 5.2% were unemployed. The proportion of people unemployed in Eurobodalla LGA was the highest, at 7.1%. The proportion of people unemployed in Yass Valley was the lowest, at 2.9%.

**Table 13. Employment in Southern NSW district, by LGA**

	Bega Valley		Eurobodalla		Mulwaree		Queanbeyan-Palerang Regional		Snowy Monaro Regional		Yass Valley		Upper Lachlan Shire		Southern NSW		NSW
	No.	%	No.	%	No.	%	No.	%	No.	%	No.	%	No.	%	No.	%	No.
Worked full-time	6,957	50.1	6,483	46.4	7,861	57.9	20,096	65.6	6,217	60.9	5,119	61.5	2,174	59.1	54,907	63.0	59.2
Worked part-time	5,298	38.1	5,662	40.5	4,121	30.4	7,595	24.8	3,067	30.1	2,405	28.9	1,141	31.0	21,702	25.0	29.7
Away from work	895	6.4	835	6.0	745	5.5	1,702	5.6	577	5.7	552	6.6	219	6.0	5,525	6.4	4.8
Unemployed	750	5.4	986	7.1	851	6.3	1,235	4.0	340	3.3	242	2.9	142	3.9	4,546	5.2	6.3
<b>Total</b>	<b>13,900</b>	<b>100</b>	<b>13,966</b>	<b>100</b>	<b>13,578</b>	<b>100</b>	<b>23,041</b>	<b>100</b>	<b>10,201</b>	<b>100</b>	<b>8,318</b>	<b>100</b>	<b>3,676</b>	<b>100</b>	<b>86,680</b>	<b>100</b>	<b>100</b>

Source: ABS Quickstats, 2016 Census: <https://www.abs.gov.au/websitedbs/D3310114.nsf/Home/2016%20QuickStats> (accessed 25 September 2019)

## Income

The median weekly personal income for people aged 15 years and over in the Southern NSW district was \$680 (see Table 14).

**Table 14. Median weekly income in Southern NSW district, by LGA (people aged 15 years and over)**

	Personal	Family	Household
Bega Valley	\$538	\$1,242	\$986
Eurobodalla	\$512	\$1,184	\$939
Goulburn Mulwaree	\$625	\$1,505	\$1,196
Queanbeyan-Palerang Regional	\$933	\$2,303	\$1,882
Snowy Monaro Regional	\$675	\$1,569	\$1,200
Upper Lachlan Shire	\$609	\$1,498	\$1,161
Yass Valley	\$869	\$2,214	\$1,879
<b>Southern NSW</b>	<b>\$680</b>	<b>\$1,645</b>	<b>\$1,320</b>
<b>NSW</b>	<b>\$664</b>	<b>\$1,780</b>	<b>\$1,486</b>

Source: ABS Quickstats, 2016 Census: <https://www.abs.gov.au/websitedbs/D3310114.nsf/Home/2016%20QuickStats> (accessed 25 September 2019)

In the Southern NSW district, the LGAs of Queanbeyan-Palerang Regional (14.2%) and Yass Valley (13.9%) had relatively low proportions of low-income households, compared to the state average (19.7%) (see Table 15). Eurobodalla and Bega Valley had the highest proportion of low-income households, at 29.4% and 29.1% respectively.

**Table 15. Household income in Southern NSW district, by LGA**

	% of households with less than \$650 gross weekly income	% of households with more than \$3000 gross weekly income
Bega Valley	29.1	5.9
Eurobodalla	29.4	5.0
Goulburn Mulwaree	25.0	10.2
Queanbeyan-Palerang Regional	14.2	25.8
Snowy Monaro Regional	24.2	10.1
Upper Lachlan Shire	25.2	10.8
Yass Valley	13.9	25.5
<b>NSW</b>	<b>19.7</b>	<b>18.7</b>

**Source:** ABS Quickstats, 2016 Census: <https://www.abs.gov.au/websitedbs/D3310114.nsf/Home/2016%20QuickStats> (accessed 25 September 2019)

## Socio-economic advantage and disadvantage

The Socio-Economic Indexes for Areas (SEIFA) is a measure used to rank areas in Australia according to socio-economic advantage and disadvantage. It is based on information from the five-yearly Census of Population and Housing.

In the Southern NSW district, Yass Valley has the highest SEIFA score (1,062) and is ranked the highest (111 (SEE Table 16)). This is followed closely by Queanbeyan-Palerang Regional, with a SEIFA score of 1,057 and a rank of 110. This means Yass Valley and Queanbeyan-Palerang Regional are relatively advantaged compared to the other LGAs in the Southern NSW district.

Conversely, of the seven LGAs, Eurobodalla has the lowest SEIFA score (938) and is ranked the lowest (40). This means Eurobodalla is relatively disadvantaged compared to the other LGAs in the Southern NSW district.

**Table 16. LGA Index of Relative Socio-economic Advantage and Disadvantage in Southern NSW**

	Score <sup>1</sup>	NSW Rank <sup>2</sup>	NSW Decile <sup>3</sup>
Bega Valley	951	57	5
Eurobodalla	938	40	4
Goulburn Mulwaree	946	52	4
Queanbeyan-Palerang Regional	1057	110	9
Snowy Monaro Regional	985	90	7
Upper Lachlan Shire	987	91	7
Yass Valley	1062	111	9

**Source:** ABS, Socio-Economic Indexes for Areas (SEIFA), 2016, 2033.0.55.001, <https://www.abs.gov.au/AUSSTATS/abs@.nsf/DetailsPage/2033.0.55.0012016?OpenDocument> (accessed 26 September 2019)

<sup>1</sup> **Score:** A low IRSAD score indicates that an area is relatively disadvantaged compared to an area with a higher score.

<sup>2</sup> **Rank:** All areas are ranked from the lowest to the highest score. The area with the lowest score is ranked number one, the area with the highest score is ranked 129. The State Rank can only be used to compare areas with a single state/territory.

<sup>3</sup> **Decile:** All areas are ordered from the lowest to highest score, the lowest 10% of areas are given a decile number of 1 and so on, up to the highest 10% of areas which are given a number of 10. This means that areas are divided into 10 groups, depending on their score. Decile 1 is the most disadvantaged relative to other deciles.

# Social Environment

## Community safety and crime

In the Southern NSW district, 622 domestic violence-related assaults and 689 non-domestic violence-related assaults occurred between January and December 2018.

Domestic violence-related assault was most likely to occur in the Eurobodalla LGA, with a rate of 464.8 per 100,000 people (see Table 15).

**Table 17. Incidents of crime recorded by the NSW Police Force in Southern NSW, by LGA, January-December 2018**

	Domestic violence-related assault			Non-domestic violence-related assault		
	No.	Rate per 100,000 population	Rank in NSW <sup>1</sup>	No.	Rate per 100,000 population	Rank in NSW
Bega Valley	106	310.8	79	97	284.4	83
Eurobodalla	177	464.8	50	185	485.8	41
Goulburn Mulwaree	115	376.4	63	128	418.9	53
Queanbeyan-Palerang Regional	135	229.7	93	171	291.0	80
Snowy Monaro Regional	47	227.5	94	66	319.5	76
Upper Lachlan Shire	8	101.2	118	9	113.8	116
Yass Valley	34	203.1	98	33	197.1	102

**Source:** Bureau of Crime Statistics and Research, NSW Local Government Area Excel crime table: [https://www.bocsar.nsw.gov.au/Pages/bocsar\\_crime\\_stats/bocsar\\_lgaexceltables.aspx](https://www.bocsar.nsw.gov.au/Pages/bocsar_crime_stats/bocsar_lgaexceltables.aspx) (accessed 26 September 2019)

<sup>1</sup> Ranked by rate of domestic and non-domestic violence per 100,000 population, from 1-129 (where number 129 equals the lowest rate, and number one equals the highest).



In the Southern NSW district, Eurobodalla had the highest rate of cannabis-related offences, at 483.9 per 100,00 of the population. Goulbourn-Mulwaree had the highest rate of amphetamine-related offences at 196.4 per 100,00 of the population.



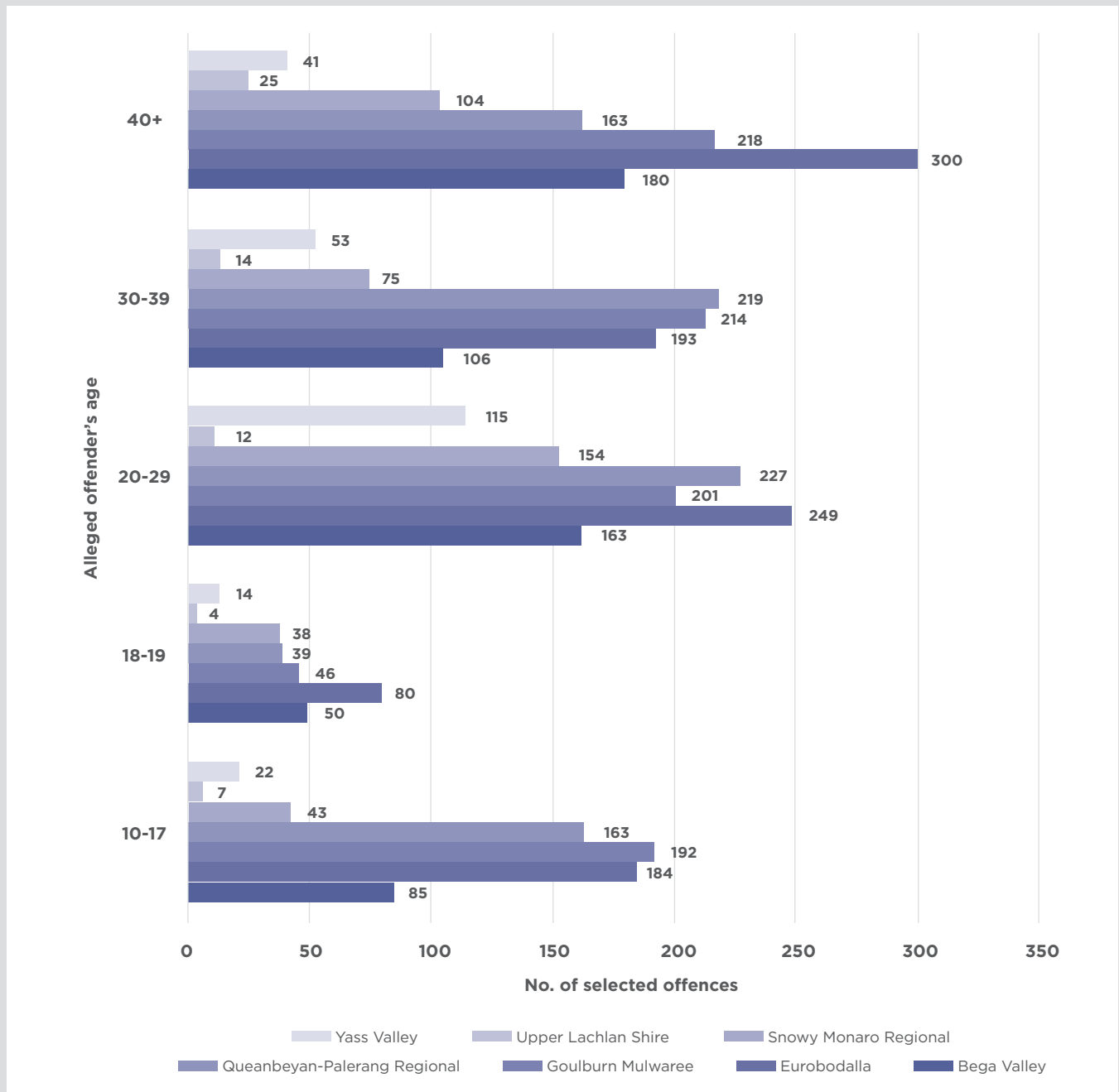
**Table 18. Recorded drug offences (possession and/or use) in the Southern NSW district, Jan-Dec, by LGA**

	Bega Valley		Eurobodalla		Goulbourn-Mulwaree		Queanbeyan-Palerang Regional		Upper Lachlan Shire		Yass Valley	
	No.	%	No.	%	No.	%	No.	%	No.	%	No.	%
Cocaine	1	2.9	3	7.9	13	42.5	5	8.5	0	0.0	0	0.0
Narcotics	0	0.0	1	2.6	3	9.8	2	3.4	0	0.0	1	6.0
Cannabis	70	205.3	142	372.9	111	363.3	77	131.0	9	113.8	81	483.9
Amphetamines	14	41.1	33	86.7	60	196.4	42	71.5	1	12.6	12	71.7
Ecstasy	2	5.9	6	15.8	6	19.6	3	5.1	0	0.0	10	59.7
Other drugs	8	23.5	19	49.9	33	108.0	15	25.5	1	12.6	27	161.3

**Source:** Bureau of Crime Statistics and Research, NSW Local Government Area Excel crime table: [https://www.bocsar.nsw.gov.au/Pages/bocsar\\_crime\\_stats/bocsar\\_lgaexceltables.aspx](https://www.bocsar.nsw.gov.au/Pages/bocsar_crime_stats/bocsar_lgaexceltables.aspx) (accessed 26 September 2019)

When looking at the age of alleged offenders in the Southern NSW district, 20-29-year-olds were the largest group of offenders in the Snowy Monaro Regional, Yass Valley and Queanbeyan-Palerang Regional LGAs, followed by 40-year-olds and above and then 30-39-year-olds (see Figure 9). In the Eurobodalla and Goulbourn Mulwaree LGAs, the largest group of offenders were 40-year-olds and above.

**Figure 9. Age of alleged offenders proceeded against by NSW Police for incidents of selected offences<sup>1</sup> in Southern NSW, 2018<sup>2</sup>**



**Source:** Bureau of Crime Statistics and Research, NSW Local Government Area Excel crime table: [https://www.bocsar.nsw.gov.au/Pages/bocsar\\_crime\\_stats/bocsar\\_lgaexceltables.aspx](https://www.bocsar.nsw.gov.au/Pages/bocsar_crime_stats/bocsar_lgaexceltables.aspx) (accessed 26 September 2019)

<sup>1</sup> For the full list of selected offences please see the original source

<sup>2</sup> The year the alleged offenders were proceeded against, rather than the year the incident was recorded.

# Maternal Health

## Teenage pregnancy

Teenage parenthood is associated with a number of adversities, including low socioeconomic status, educational under-achievement and drug abuse. In turn, young parenthood can act to further entrench some of these problems and perpetuate a cycle of disadvantage.

In 2018, 51 mothers aged 19 and under gave birth in the Southern NSW district (see Table 19). This accounts for 3.6% of all births in the district. This proportion was almost double than the NSW state average of 1.9%.

Eurobodalla had the highest proportion of young mothers giving birth in 2018 at 7.2%.

**Table 19. Young mothers who gave birth<sup>1</sup> in Southern NSW district, by LGA, 2018**

LGA	No. of mothers 19 and under	% of mothers giving birth aged 19 and under	Total no. of births
Bega Valley	7	2.8	258
Eurobodalla	20	7.2	275
Goulburn Mulwaree	8	3.3	253
Queanbeyan-Palerang Regional	9	2.4	383
Snowy Monaro Regional	5	3.5	145
Upper Lachlan Shire	2	3.2	49
Yass Valley	0	0	37
<b>Southern NSW</b>	<b>51</b>	<b>3.6</b>	<b>1,400</b>
<b>NSW</b>	<b>1,792</b>	<b>1.9</b>	<b>94,145</b>

Source: Healthstats NSW: [http://www.healthstats.nsw.gov.au/Indicator/mab\\_mbth\\_age/mab\\_mbth\\_age\\_lgamap](http://www.healthstats.nsw.gov.au/Indicator/mab_mbth_age/mab_mbth_age_lgamap) (accessed 1 October 2019)

<sup>1</sup> Number of mothers who gave birth (stillbirth or live birth) in NSW, regardless of place of permanent residence

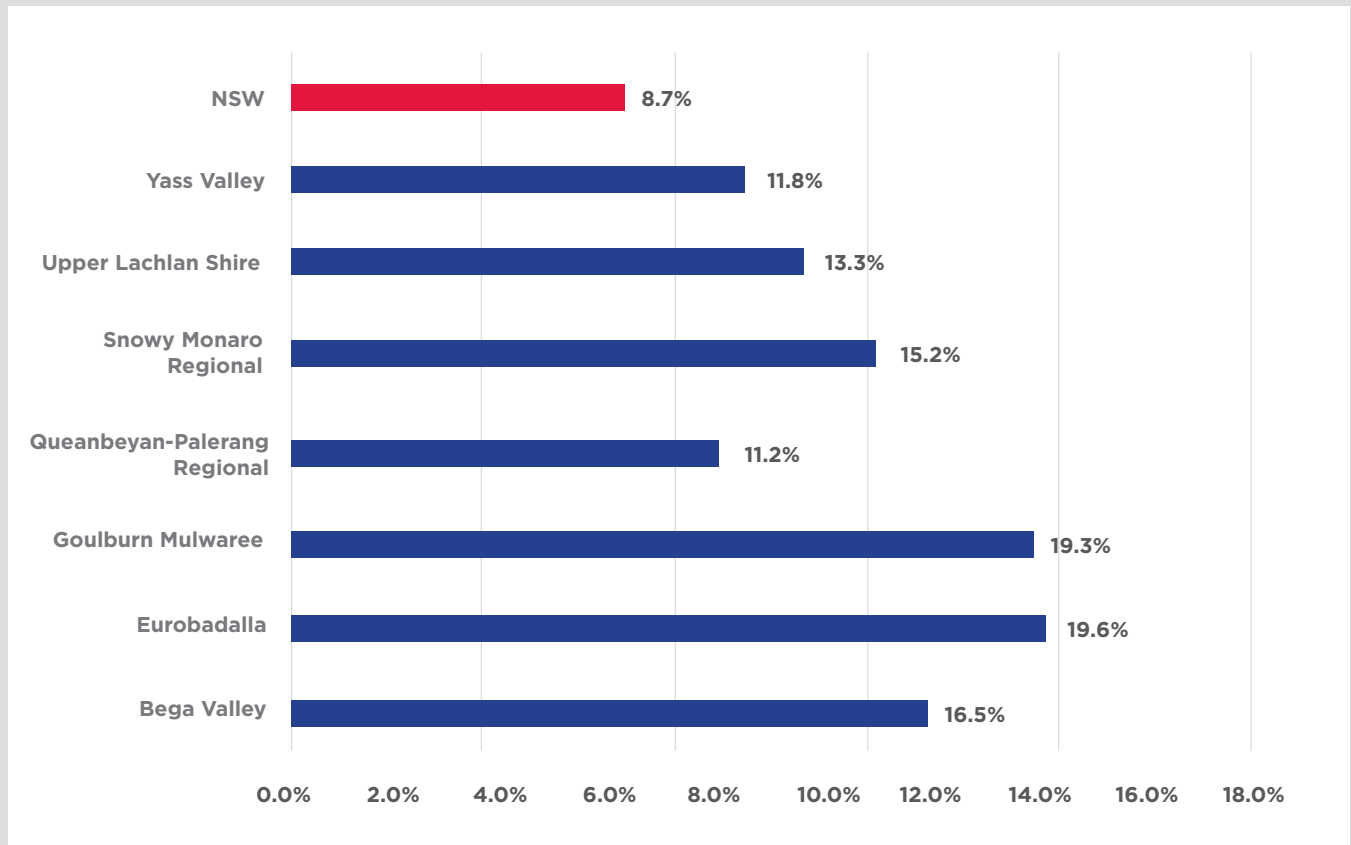
## Smoking during pregnancy

Smoking during pregnancy is an important modifiable risk factor for low birth weight, pre-term birth, placental complications and perinatal mortality.

Between 2015-2017, an average of 15.3% of mothers in the Southern NSW district smoked during their pregnancy (see Figure 10).

Mothers in the Eurobodalla (19.6%) and Goulburn Mulwaree (19.3%) were most likely to smoke during their pregnancy, compared to mothers in Queanbeyan-Palerang Regional (11.2%) and Yass Valley (11.8%).

Figure 10. Proportion of mothers in the Southern NSW district who smoked during pregnancy, 2015-2017



Source: Healthstats NSW: [http://www.healthstats.nsw.gov.au/Indicator/mab\\_smo\\_cat/mab\\_smo\\_cat\\_lga\\_trend](http://www.healthstats.nsw.gov.au/Indicator/mab_smo_cat/mab_smo_cat_lga_trend) (accessed 26 September 2019)

## Australian Mothers Index

Since 2000, Save the Children has produced a Mother's Index showing where mothers do best and where they face the greatest hardships. This index compares countries worldwide, as well as Australian states and territories and LGAs.

The information in Table 20 is derived from the Local-level Mothers Index. Five indicators make up this index:

- maternal health - the proportion of pregnant women with at least one antenatal visit in the first trimester
- children's wellbeing - the proportion of children under 5 developmentally on track (measured by the AEDC)
- educational status - the proportion of women completing Year 12 or above
- economic status - average household income
- relative socioeconomic disadvantage - a measure of a mother's access to material and social resources and her ability to participate in society

These indicators were used to rank every LGA in NSW, where 1 is the best rank and 152 is the worst.

Of the seven LGAs in the Southern NSW District, Yass Valley performed the best receiving a rank of 21 out of 152 (see Table 20). Eurobodalla received the lowest rank, 113 out of 152. This means that mothers in Eurobodalla are facing much greater hardships than mothers in Yass Valley.

**Table 20. Mothers Index Ranking in the Southern NSW District, by LGA**

LGA	NSW Ranking	
Bega Valley	82	
Eurobodalla	113	
Goulburn Mulwaree	111	
Queanbeyan-Palerang Regional	Queanbeyan	35
	Palerang	25
Snowy Monaro Regional	Cooma-Monaro	79
	Bombala	68
	Snowy River	51
Upper Lachlan Shire	42	
Yass Valley	21	

**Source:** Harris, J and Wells, M, 2016, *State of Australia's Mothers*, Save the Children, Sydney, <https://apo.org.au/sites/default/files/resource-files/2016/05/apo-nid63692-1201431.pdf> (accessed 26 September 2019)

# Disability

## Need for assistance with core activities

In the Southern NSW district, 5.5% of the population need help or assistance with core activities (see Table 21). This amounts to 10,975 people. In the Eurobodalla LGA, 7.7% of people need help or assistance with core activities. This was the highest proportion of all seven LGAs. In Queanbeyan-Palerang Regional LGA, only 3.9% of people need help or assistance with core activities. This was the smallest proportion of all seven LGAs.

Table 21. Need for assistance with core activities<sup>1</sup> in Southern NSW district, by LGA

	Has need for assistance		Does not have need for assistance		Need for assistance not stated		Total
	No.	%	No.	%	No.	%	
Bega Valley	2,001	6.0	28,532	85.8	2,718	8.2	33,253
Eurobodalla	2,883	7.7	31,199	83.8	3,148	8.5	37,232
Goulburn Mulwaree	1,908	6.4	25,041	84.6	2,664	9.0	29,609
Queanbeyan-Palerang Regional	2,158	3.9	49,520	88.4	4,355	7.8	56,027
Snowy Monaro Regional	881	4.4	17,288	85.5	2,050	10.1	20,218
Upper Lachlan Shire	453	5.9	6,563	85.3	683	8.9	7,695
Yass Valley	691	4.3	14,303	88.6	1,155	7.2	16,142
<b>Southern NSW</b>	<b>10,975</b>	<b>5.5</b>	<b>172,446</b>	<b>86.1</b>	<b>16,773</b>	<b>8.4</b>	<b>200,176</b>
<b>NSW</b>	<b>402,048</b>	<b>5.4</b>	<b>6,558,727</b>	<b>87.7</b>	<b>519,452</b>	<b>6.9</b>	<b>7,480,228</b>

Source: ABS, 2016 Census Community Profiles: <https://www.abs.gov.au/websitedbs/D3310114.nsf/Home/2016%20Census%20Community%20Profiles> (accessed 2 October 2019)

<sup>1</sup> A person's need for help or assistance in one or more of the three core activity areas of self-care, mobility, and communication, because of a disability, long-term health condition (lasting six months or more) or old age.

# Housing

## Households

The average number of people per household in the Southern NSW district is 2.4, slightly less than the NSW state average of 2.6 (see Table 22).

The majority of households in the Southern NSW district are family households (69.2%). Single-person households make up 28.3% of all households and only 2.5% of households are group households.

Table 22. Household Composition in Southern NSW, by LGA

LGA	Family Households		Single-person households		Group households		Total	Average people per household
	No.	%	No.	%	No.	%		No.
Bega Valley	8,873	67.1	4,018	30.4	323	2.4	13,214	2.2
Eurobodalla	10,010	66.6	4,654	31.0	369	2.5	15,033	2.2
Goulburn Mulwaree	7,467	68.2	3,208	29.3	273	2.5	10,948	2.4
Queanbeyan-Palerang Regional	14,382	71.8	5,171	25.8	470	2.3	20,023	2.6
Snowy Monaro Regional	4,969	66.1	2,293	30.5	258	3.4	7,520	2.3
Upper Lachlan Shire	2,021	69.4	845	29.0	48	1.6	2,914	2.4
Yass Valley	4,307	78.1	1,102	20.0	108	2.0	5,517	2.7
<b>Illawarra Shoalhaven</b>	<b>52,029</b>	<b>69.2</b>	<b>21,291</b>	<b>28.3</b>	<b>1849</b>	<b>2.5</b>	<b>75,169</b>	<b>2.4</b>
<b>NSW</b>		<b>23.8</b>		<b>4.2</b>		<b>72.0</b>		<b>2.6</b>

Source: ABS Quickstats, 2016 Census: <https://www.abs.gov.au/websitedbs/D3310114.nsf/Home/2016%20QuickStats> (accessed 25 September 2019)

## Tenure types

In the Southern NSW district, 38.2% of occupied private dwellings were owned outright, 32.7% were owned with a mortgage, and 25.2% were rented (see Table 23).

Eurobodalla (47.2%) and Upper Lachlan Shire (47.5%) had the highest proportion of outright homeownership. Queanbeyan-Palerang Regional (27.6%) had the smallest proportion of outright homeownership.

Goulburn Mulwaree and Queanbeyan-Palerang Regional had the highest proportion of rented private dwellings, both at 28.6%.

**Table 23. Tenure of occupied private dwelling in the Southern NSW, by LGA**

LGA	Owned outright		Owned with mortgage		Rented		Other tenure		Not stated	
	No.	%	No.	%	No.	%	No.	%	No.	%
Bega Valley	6,017	45.5	3,631	27.5	2,999	22.7	146	1.1	426	3.2
Eurobodalla	7,098	47.2	3,568	23.7	3,695	24.6	183	1.2	492	3.3
Goulburn Mulwaree	3,860	35.3	3,536	32.3	3,129	28.6	101	0.9	322	2.9
Queanbeyan-Palerang Regional	5,521	27.6	8,160	40.7	5,737	28.6	108	0.5	500	2.5
Snowy Monaro Regional	2,929	38.9	2,319	30.8	1,883	25.0	73	1.0	317	4.2
Upper Lachlan Shire	1,382	47.5	912	31.3	504	17.3	27	0.9	87	3.0
Yass Valley	1,900	34.4	2,443	44.2	1,011	18.3	59	1.1	110	2.0
Illawarra Shoalhaven	28,707	38.2	24,569	32.7	18,958	25.2	697	0.9	2,254	3.0
<b>NSW</b>		<b>32.2</b>		<b>32.3</b>		<b>32.3</b>		<b>0.9</b>		<b>2.8</b>

**Source:** ABS Quickstats, 2016 Census: <https://www.abs.gov.au/websitedbs/D3310114.nsf/Home/2016%20QuickStats> (accessed 25 September 2019)





# Housing affordability

One way to measure housing stress is to calculate the percentage of households who spend more than 30% of their household income on rent or mortgage payments.

Compared to the New South Wales average, levels of rental and mortgage stress in Southern NSW is low. Eurobodalla has the highest proportion of households in rental stress (11.2%), which is below the state average of 12.9% (see Table 24). Upper Lachlan Shire LGA has the lowest proportion of households in rental stress, with only 5.1% of households paying more than 30% of their income on rent. The Yass Valley LGA has the highest proportion of households in mortgage stress (6.6 %), which is also below the state average (7.4%). The Snowy Monaro Regional LGA had the lowest proportion of households paying more than 30% of their income on mortgage repayments, at 5.2%.

**Table 24. Mortgage and rent payments in the Southern NSW district, by LGA<sup>1</sup>**

	Bega Valley	Eurobodalla	Goulbourn Mulwaree	Queanbeyan-Palerang Regional	Snowy Morano Regional	Upper Lachlan Shire	Yass Valley	New South Wales
Average weekly rent	\$250	\$255	\$260	\$300	\$220	\$190	\$300	\$380
Renting households where rent payments are less than 30% of household income	90.8%	88.8%	89.6%	92.0%	92.6%	94.9%	94.7%	87.1%
Renting households where rent payments are less than 30% of household income	9.2%	11.2%	10.4%	8.0%	7.4%	5.1%	5.3%	12.9%
Average monthly mortgage repayments	\$1,343	\$1,400	\$1,517	\$2,100	\$1,300	\$1,400	\$2,000	\$1,986
Home-owning households where mortgage repayments are less than 30% of household income	94.2%	94.2%	94.1%	93.6%	94.8%	93.7%	93.4%	92.6%
Home-owning households with mortgage repayments greater than or equal to 30% of household income	5.8%	5.8%	5.9%	6.4%	5.2%	6.3%	6.6%	7.4%

**Source:** ABS Quickstats, 2016 Census: <https://www.abs.gov.au/websitedbs/D3310114.nsf/Home/2016%20QuickStats> (accessed 25 September 2019)

<sup>1</sup> The number of households where rent and mortgage payments were 30% or more of an imputed income measure are expressed in this table as a proportion of the total number of households in an area. The nature of the income imputation means that the reported proportion may significantly overstate the true proportion.

## Social housing

As of 30 June 2018, there were 3,234 social housing residential dwellings in the Southern NSW district (see Table 25). Public housing accounted for 60.5% of these dwellings and community housing accounted for 23.8%. The majority of these dwellings were in the Queanbeyan-Palerang Regional LGA.

**Table 25. Social Housing Residential Dwellings in Southern NSW, as at 30 June 2018**

	Public Housing		Aboriginal Housing Office		Community Housing		Indigenous Community Housing		Total
	No.	%	No.	%	No.	%	No.	%	
Bega Valley	302	55.6	59	10.9	119	21.9	63	11.6	543
Eurobodalla	358	50.9	69	9.8	124	17.6	152	21.6	703
Goulburn Mulwaree	658	88.6	6	0.8	69	9.3	10	1.3	743
Queanbeyan-Palerang Regional	639	67.7	78	8.3	180	19.1	47	4.9	944
Snowy Monaro Regional	0	0.0	0	0.0	160	100	0	0.0	160
Upper Lachlan Shire	0	0.0	0	0.0	22	100	0	0.0	22
Yass Valley	1	0.8	0	0.0	96	80.7	22	18.5	119
<b>Illawarra Shoalhaven</b>	<b>1,958</b>	<b>60.5</b>	<b>212</b>	<b>6.6</b>	<b>770</b>	<b>23.8</b>	<b>294</b>	<b>9.1</b>	<b>3,234</b>
<b>NSW</b>	<b>111,341</b>	<b>73.4</b>	<b>4,603</b>	<b>3.0</b>	<b>30,757</b>	<b>20.3</b>	<b>4,971</b>	<b>5.3</b>	<b>151,672</b>

Source: FACS Administrative Data, unpublished.

As of 30 June 2018, there were 2,044 public housing and Aboriginal housing tenancies in the Southern NSW district (see Table 26). Public housing made up 90.3% of all tenancies and Aboriginal housing made up 9.7% of all tenancies.

**Table 26. Public Housing and Aboriginal Housing Office Tenancies in Southern NSW, as at 30 June 2018**

	Public Housing		Aboriginal Housing Office		Total
	No.	%	No.	%	
Bega Valley	273	83.2	55	16.8	328
Eurobodalla	343	84.5	63	15.5	406
Goulburn Mulwaree	633	99.1	6	0.9	639
Queanbeyan-Palerang Regional	596	89.0	74	11.0	670
Snowy Monaro Regional	0	0.0	0	0.0	0
Upper Lachlan Shire	0	0.0	0	0.0	0
Yass Valley	1	100	0	0.0	1
<b>Southern NSW</b>	<b>1,846</b>	<b>90.3</b>	<b>198</b>	<b>9.7</b>	<b>2,044</b>
<b>NSW</b>	<b>106,895</b>	<b>96.0</b>	<b>4,414</b>	<b>4.0</b>	<b>111,309</b>

Source: FACS Administrative Data, unpublished.

As of 30 June 2018, there were 1,190 vacant social housing residential dwellings in the Illawarra Shoalhaven district (see Table 25 and 26).