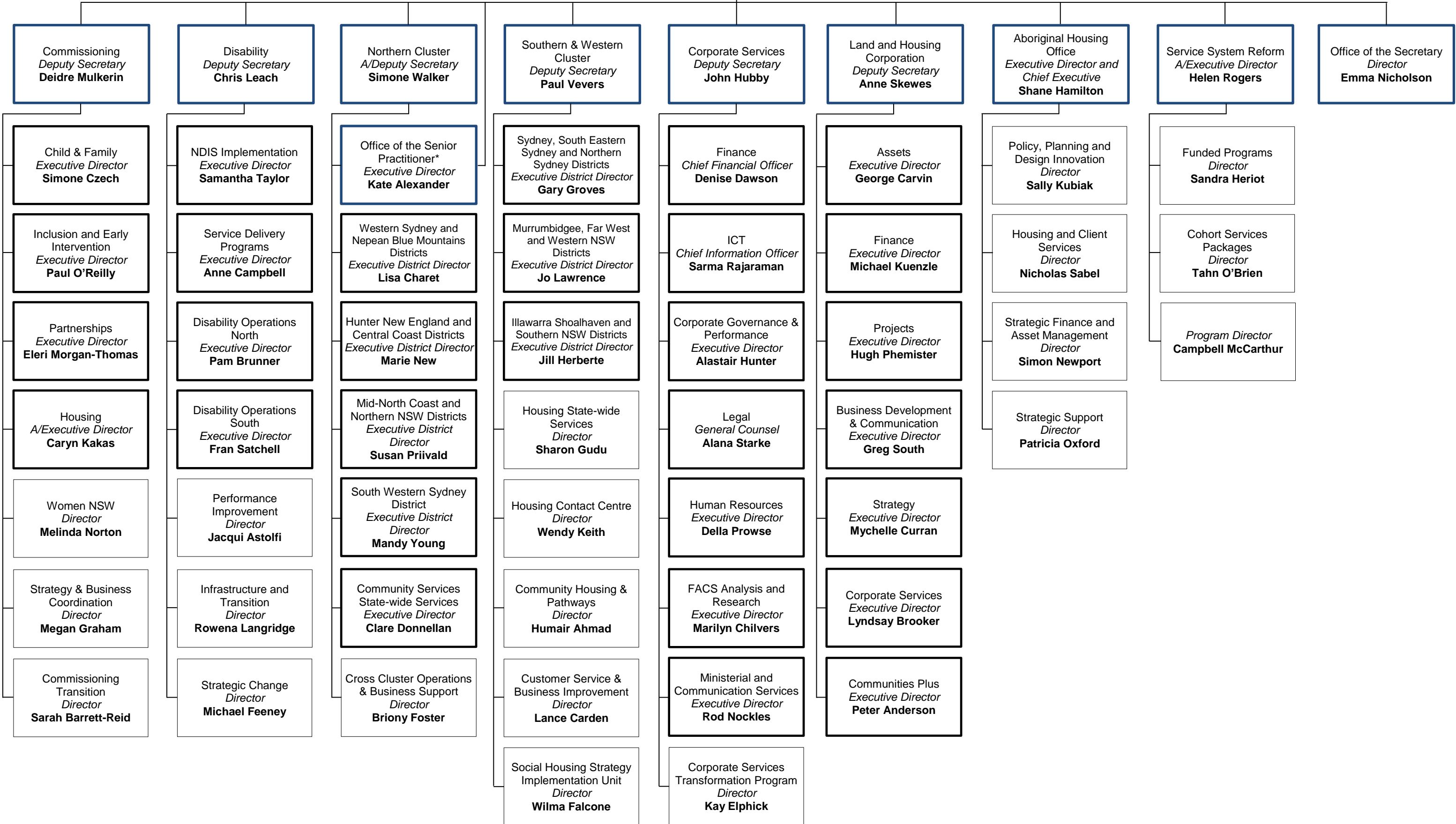


Family & Community Services
Secretary
Michael Coutts-Trotter



 Direct report to the Secretary
 PSSE Band 2 (or equivalent) non-direct report to the Secretary
 PSSE Band 1 (or equivalent) non-direct report to the Secretary

* The Executive Director, Office of the Senior Practitioner (OSP) reports to:

- the Secretary for the review, research and investigative aspects of OSP's work so it is independent of operations; and
- the Deputy Secretary Northern Cluster for OSP's practice support functions.